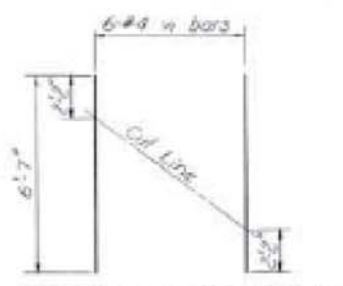


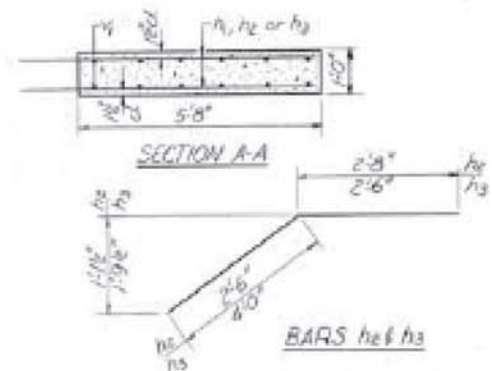
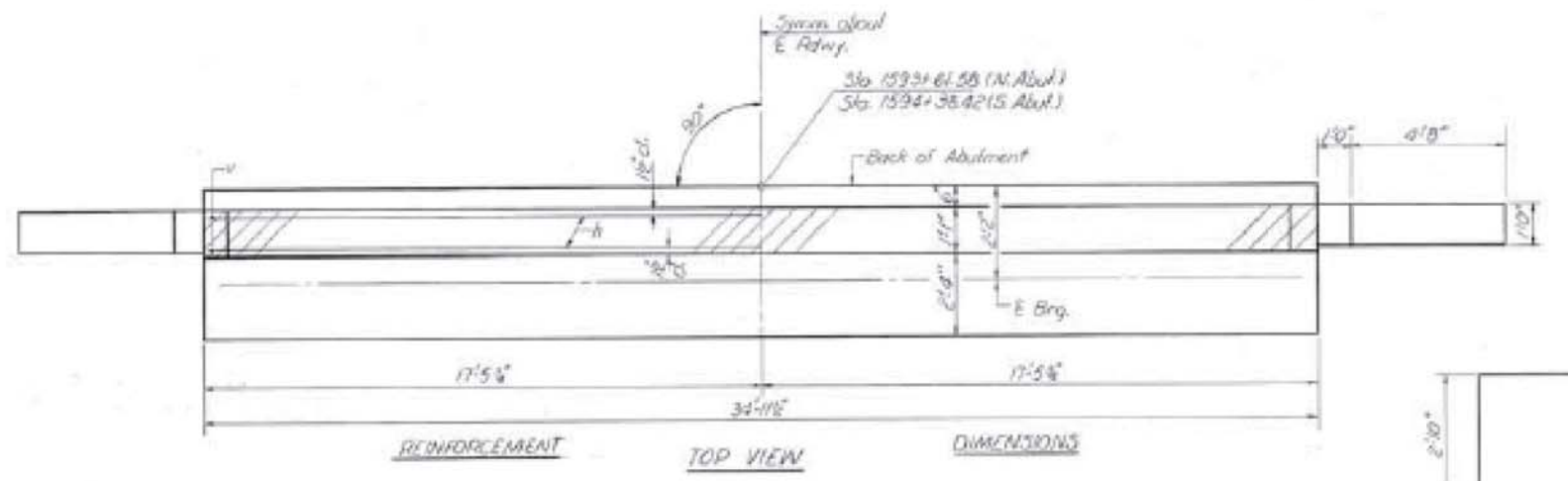
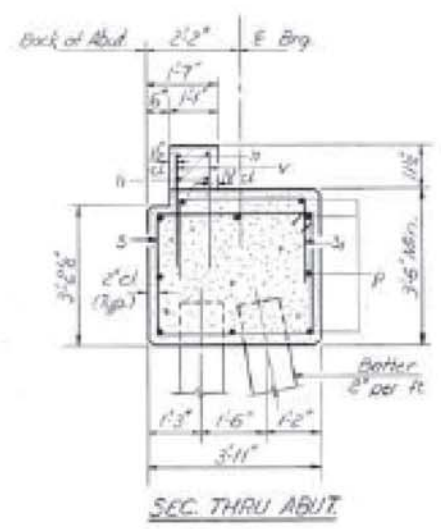
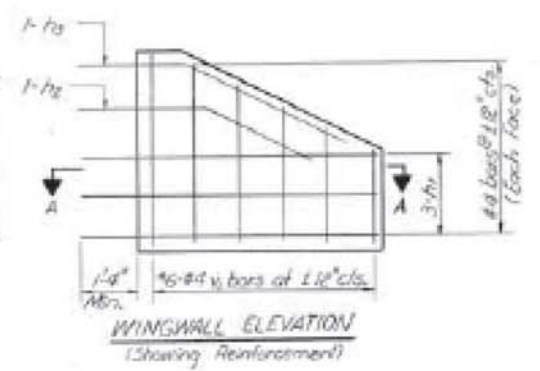
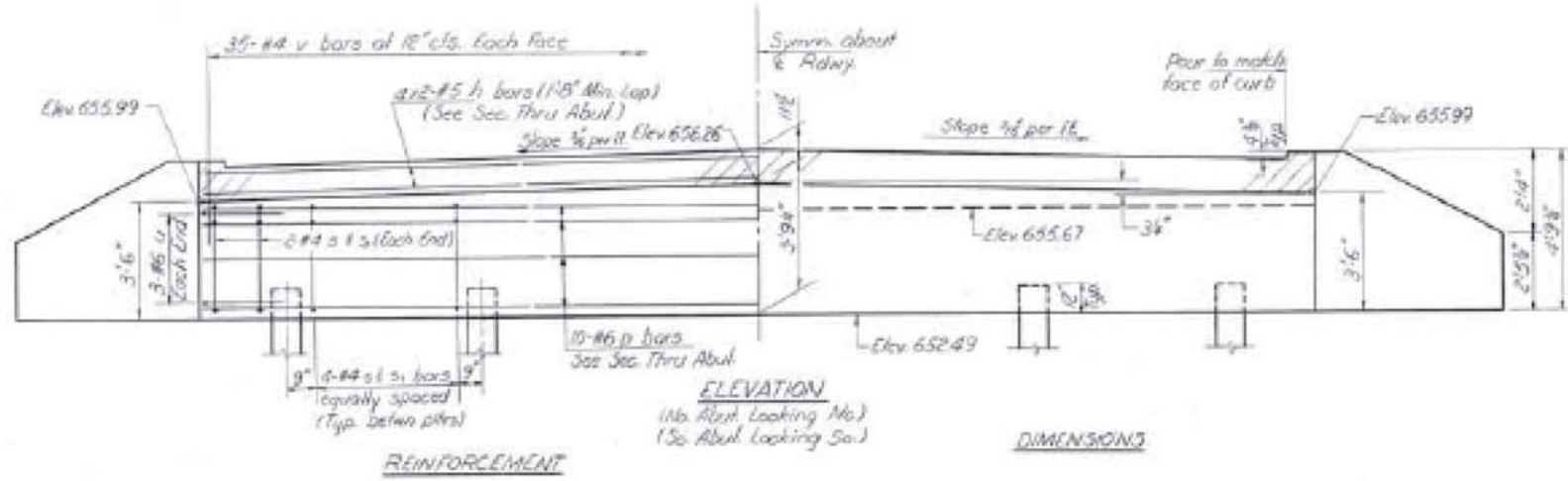
STATE OF ILLINOIS
DEPARTMENT OF TRANSPORTATION

PROJECT NO.	106 BR-1	SECTION	FORD	SHEET NO.	34	TOTAL SHEETS	18
SHEET NO. 4							
6 SHEETS							

PILE DATA
 Type: Concrete (12" Min. Shell)
 Capacity: 25 Tons
 Est. Length: 24' (N. Abut.) 16' (S. Abut.)
 No. Req'd: 3 at North Abut.
 8 at South Abut. in a permanent location of South Abut.



*FIELD CUTTING DIAGRAM
 Order 6 bars full lengths. Cut to fit as shown and use remainder of bars in opposite face.



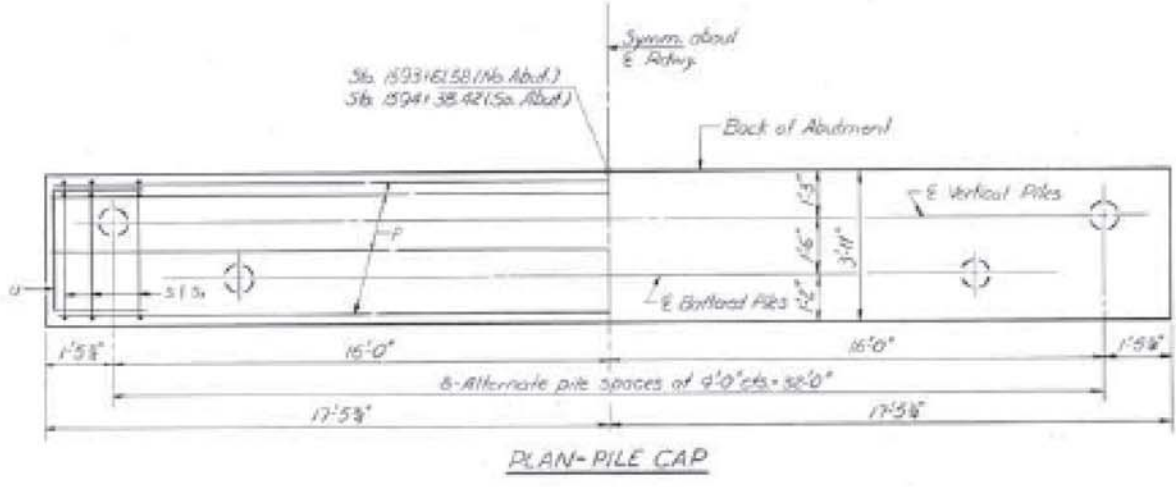
**TWO ABUTMENTS
BILL OF MATERIAL**

Bar	No.	Size	Length	Shape
A	16	#5	18.5'	—
h1	68	#4	6.50'	—
h2	8	#4	5.25'	—
h3	8	#4	6.75'	—
B	20	#6	39.7'	—
S	72	#4	23.25'	□
3	72	#4	5.1'	□
U	12	#6	9.6'	□
V	140	#4	2.12'	—
W	28	#4	6.7'	—

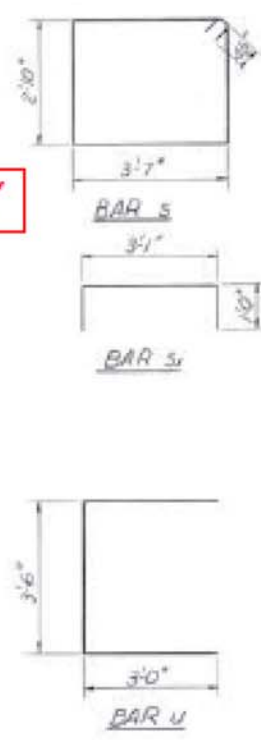
Class X Concrete Cu Wt. 390
 Reinforcement Bars Pound 2880
 Concrete Piles Lin. Ft. 394
 Test Piles Concrete Each 1

NOTES:
 Bars indicated thus 3x2 #5 etc. indicates 3 lines of bars with 2 lengths per line.
 Hatched area to be poured after beams are in place and joints grouted. Quantity of Class X Concrete is included with superstructure.
 All edges shall have standard 1/4 chamfers except as noted.

DESIGNED	Richard Bennett	EXAMINED	[Signature]
CHECKED	DAU KRULL	PASSED	[Signature]
DRAWN	R. Doty	APPROVED	[Signature]
CHECKED	D. K.		



FOR INFORMATION ONLY



NORTH AND SOUTH ABUTMENTS
 E.A. RT. 796 SEC. 106 BR-1
 FORD COUNTY
 STA. 1594+00.00