

F.A.P. RTE.	SECTION	COUNTY	TOTAL SHEETS	SHEET NO.
332	16. K-15d)L	KANKAKEE	30	1
		ILLINOIS	CONTRACT NO. 66C14	

**INDEX**

- 1 COVER SHEET
- 2 GENERAL NOTES & LOCATION
- 3-7 SUMMARY OF QUANTITIES
- 8 TYPICAL SECTIONS
- 9-10 SCHEDULES
- 11-14 PLAN AND PROFILE
- 15-20 DETAILS
- 21-22 LIGHTING GENERAL NOTES & TABLES
- 23-30 CROSS SECTIONS

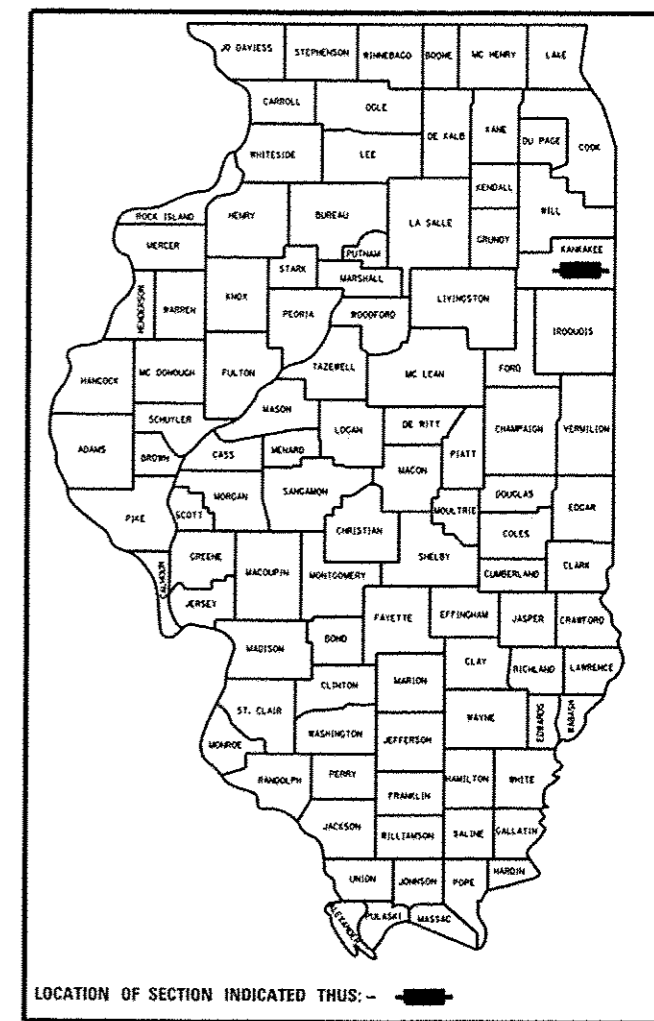
**STATE OF ILLINOIS  
DEPARTMENT OF TRANSPORTATION  
DIVISION OF HIGHWAYS**

**PROPOSED  
HIGHWAY PLANS**

**FAP ROUTE 332 (IL 1/17)  
SECTION (6, K-15d)L, I  
PROJECT: ACHSIP-0332 (110)  
LIGHTING, WIDEN SHOULDERS & RUMBLE STRIPS  
KANKAKEE COUNTY**

C-93-107-12

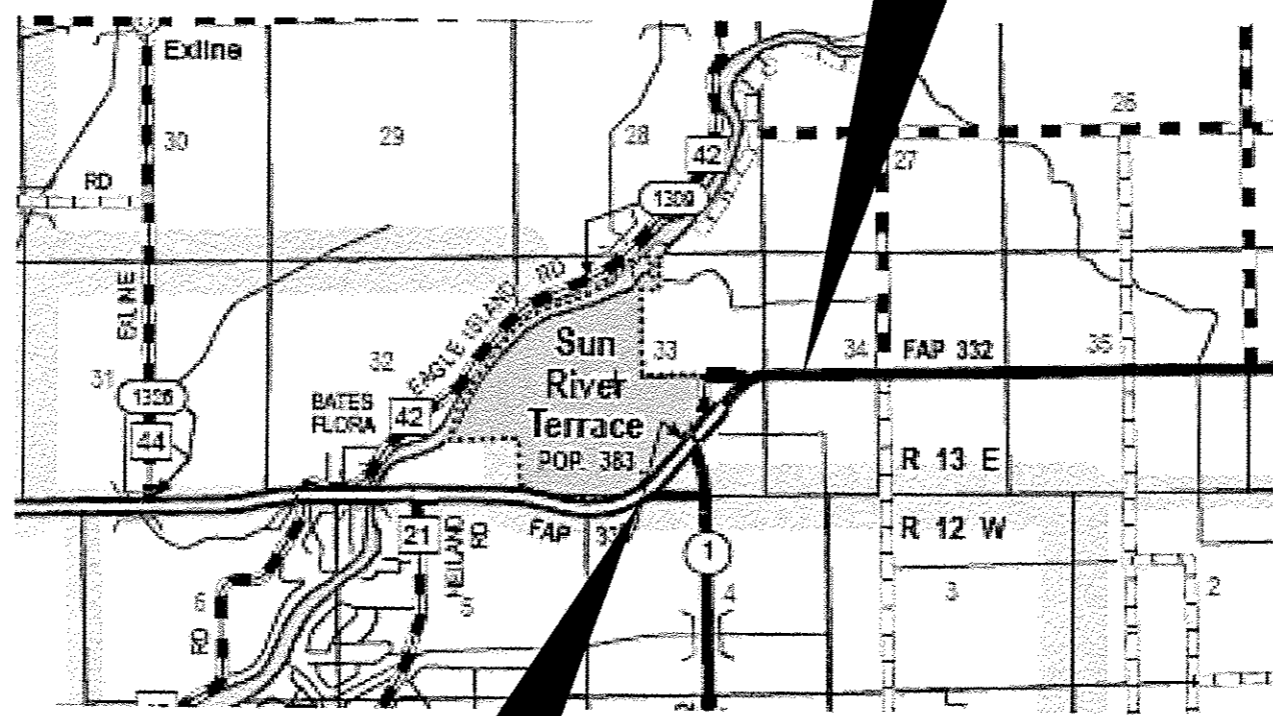
D-93-056-12



**LIST OF ILLINOIS DOT HIGHWAY STANDARDS**

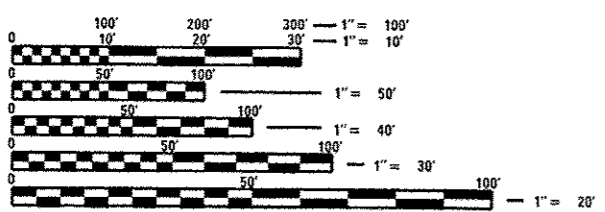
- 000001-06 STANDARD SYMBOLS, ABBREVIATIONS AND PATTERNS
- 001001-02 AREAS OF REINFORCEMENT BARS
- 406201-01 MAILBOX TURNOUT
- 482001-02 HMA SHOULDER ADJACENT TO FLEXIBLE PAVEMENT
- 642001-02 SHOULDER RUMBLE STRIPS, 16 INCH
- 701201-04 LANE CLOSURE, 2L, 2W, DAY ONLY, FOR SPEEDS ≥ 45 MPH
- 701306-03 LANE CLOSURE, 2L, 2W, SLOW MOVING OPERATIONS DAY ONLY, FOR SPEEDS ≥ 45 MPH
- 701311-03 LANE CLOSURE, 2L, 2W, MOVING OPERATIONS - DAY ONLY
- 701326-04 LANE CLOSURE, 2L, 2W, PAVEMENT WIDENING, FOR SPEEDS ≥ 45 MPH
- 701901-03 TRAFFIC CONTROL DEVICES
- 780001-03 TYPICAL PAVEMENT MARKINGS
- 781001-03 TYPICAL APPLICATIONS RAISED REFLECTIVE PAVEMENT MARKERS
- 825006-01 LIGHTING CONTROLLER, POLE MOUNTED, 480V
- 830006-01 LIGHT POLE ALUMINUM DAVIT ARM
- 836001-02 LIGHT POLE FOUNDATION

**PROJECT ENDS  
STA 34+00**



**PROJECT BEGINS  
STA 288+65**

**STATION EQUATION  
STA 317+76 BK=  
STA 22+48.48 AH**



FULL SIZE PLANS HAVE BEEN PREPARED USING STANDARD ENGINEERING SCALES. REDUCED SIZED PLANS WILL NOT CONFORM TO STANDARD SCALES. IN MAKING MEASUREMENTS ON REDUCED PLANS, THE ABOVE SCALES MAY BE USED.

J.U.L.I.E.  
JOINT UTILITY LOCATION INFORMATION FOR EXCAVATION  
1-800-892-0123  
OR 811

**PROJECT ENGINEER: JOE KANNEL, P.E.  
UNIT CHIEF: PAT BRABOY**

**CONTRACT NO. 66C14**

GROSS LENGTH = 4,062.52 FT. = 1.13 MILE  
NET LENGTH = 4,062.52 FT. = 1.13 MILE

**FUNCTIONAL CLASSIFICATION—  
OTHER ARTERIAL**

2011 ADT = 7750 VPD  
PV = 76.46% SU = 5.48% MU = 18.06%

STATE OF ILLINOIS  
DEPARTMENT OF TRANSPORTATION  
DIVISION OF HIGHWAYS

SUBMITTED 10-26-2012  
Paul A. Cochran  
DEPUTY DIRECTOR OF HIGHWAYS, REGION ENGINEER

Dec 7 2012  
John D. Baranzelli, P.E.  
actg ENGINEER OF DESIGN AND ENVIRONMENT

Dec 7 2012  
William R. Frey, Jr.  
actg DIRECTOR OF HIGHWAYS, CHIEF ENGINEER

**PRINTED BY THE AUTHORITY  
OF THE STATE OF ILLINOIS**