

NOTES:

- POLE FOUNDATIONS SHALL BE INSTALLED 15 FT. FROM EDGE OF PAVEMENT. SETBACK SHALL BE INCREASED AS NEEDED TO AVOID FLOWLINE OF THE DITCH, NOT TO EXCEED 20 FT.
- THE LOCATION OF A LIGHT POLE SHALL NOT BE MOVED WITHOUT THE PERMISSION OF WARREN NORRIS, PLEASE CALL HIM AT 815-434-8506.

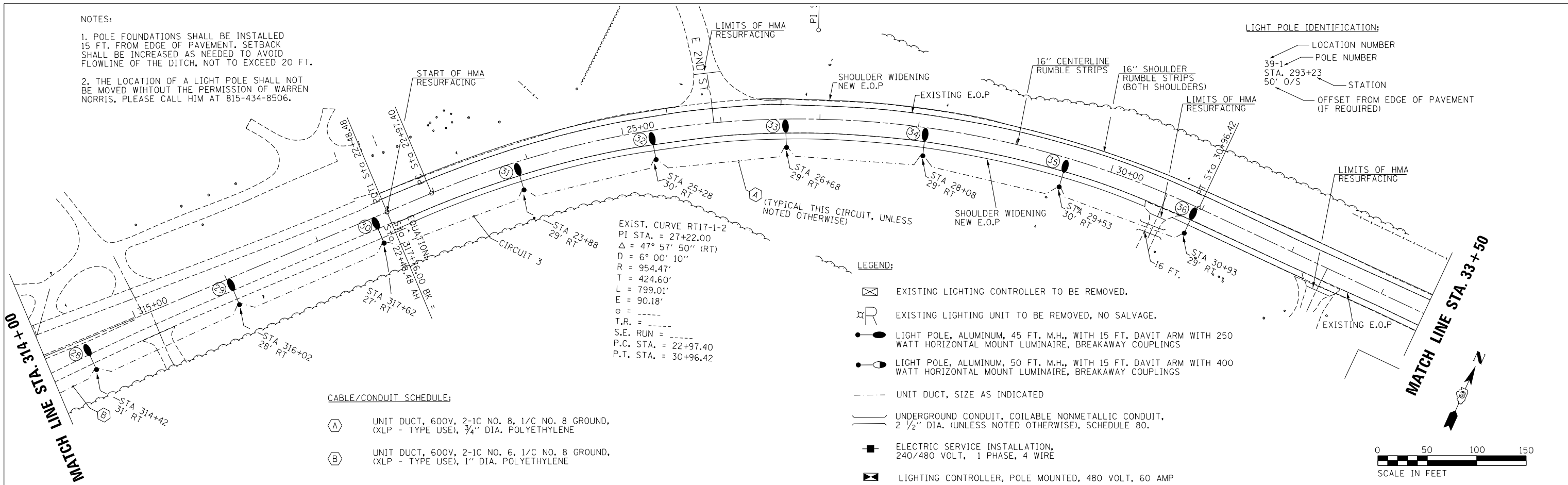
START OF HMA RESURFACING

LIMITS OF HMA RESURFACING

LIGHT POLE IDENTIFICATION:

- LOCATION NUMBER
- POLE NUMBER
- STATION
- OFFSET FROM EDGE OF PAVEMENT (IF REQUIRED)

PLAN	SURVEYED	DATE
	PLOTTED	BY
	CHECKED	
	FILE NAME	
	NO.	



EXIST. CURVE RT17-1-2
 PI STA. = 27+22.00
 $\Delta = 47^\circ 57' 50''$ (RT)
 $D = 6^\circ 00' 10''$
 $R = 954.47'$
 $T = 424.60'$
 $L = 799.01'$
 $e = 90.18'$
 $T.R. =$
 $S.E. RUN =$
 $P.C. STA. = 22+97.40$
 $P.T. STA. = 30+96.42$

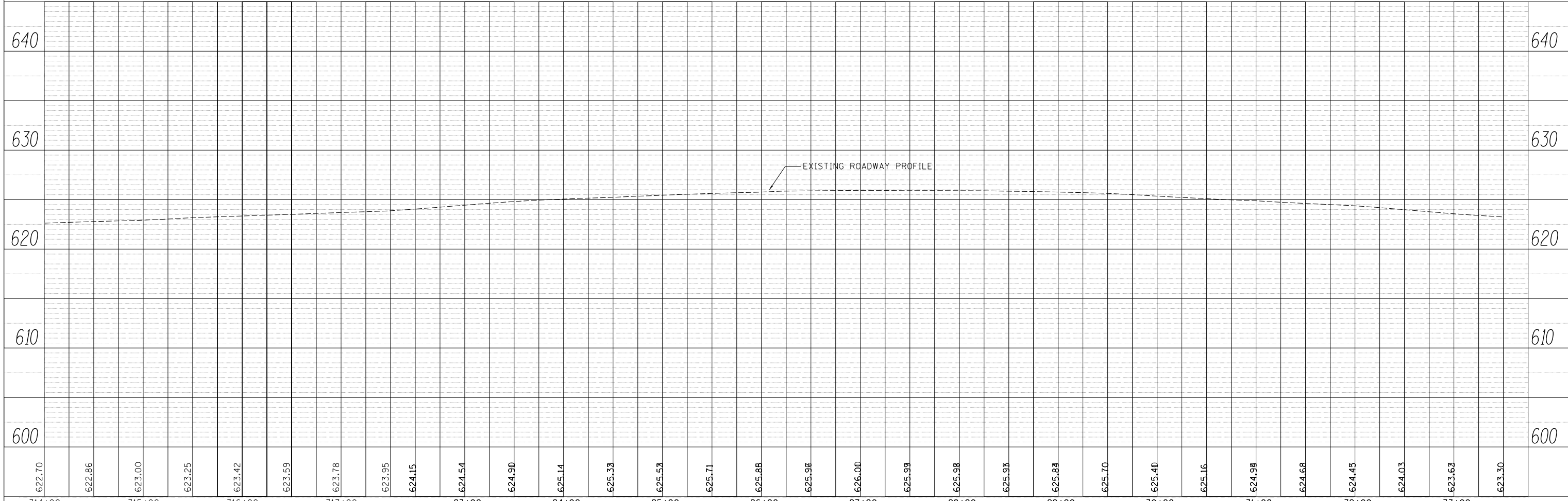
LEGEND:

- EXISTING LIGHTING CONTROLLER TO BE REMOVED.
- EXISTING LIGHTING UNIT TO BE REMOVED, NO SALVAGE.
- LIGHT POLE, ALUMINUM, 45 FT. M.H., WITH 15 FT. DAVIT ARM WITH 250 WATT HORIZONTAL MOUNT LUMINAIRE, BREAKAWAY COUPLINGS
- LIGHT POLE, ALUMINUM, 50 FT. M.H., WITH 15 FT. DAVIT ARM WITH 400 WATT HORIZONTAL MOUNT LUMINAIRE, BREAKAWAY COUPLINGS
- UNIT DUCT, SIZE AS INDICATED
- UNDERGROUND CONDUIT, COILABLE NONMETALLIC CONDUIT, 2 1/2" DIA. (UNLESS NOTED OTHERWISE), SCHEDULE 80.
- ELECTRIC SERVICE INSTALLATION, 240/480 VOLT, 1 PHASE, 4 WIRE
- LIGHTING CONTROLLER, POLE MOUNTED, 480 VOLT, 60 AMP

CABLE/CONDUIT SCHEDULE:

- (A) UNIT DUCT, 600V, 2-1C NO. 8, 1/C NO. 8 GROUND, (XLP - TYPE USE), 3/4" DIA. POLYETHYLENE
- (B) UNIT DUCT, 600V, 2-1C NO. 6, 1/C NO. 8 GROUND, (XLP - TYPE USE), 1" DIA. POLYETHYLENE

PROFILE	SURVEYED	DATE
	PLOTTED	BY
	CHECKED	
	NOTATIONS	
	NO.	



FILE NAME =	USER NAME = pletschr	DESIGNED -	REVISED -
c:\pwork\pwidot\pletschr\d0300202\0366C14-sh1-plnpr.f.dgn		DRAWN -	REVISED -
Default	PLOT SCALE = 100.0000' / in.	CHECKED -	REVISED -
	PLOT DATE = 10/26/2012	DATE -	REVISED -

STATE OF ILLINOIS
 DEPARTMENT OF TRANSPORTATION

PLAN & PROFILE

SCALE: SHEET 3 OF 4 SHEETS STA. 314+00 TO STA. 33+50

F.A.P. RTE.	SECTION	COUNTY	TOTAL SHEETS	SHEET NO.
332	(6, K-15d)L,I	KANKAKEE	30	13
CONTRACT NO. 66C14			ILLINOIS FED. AID PROJECT	