

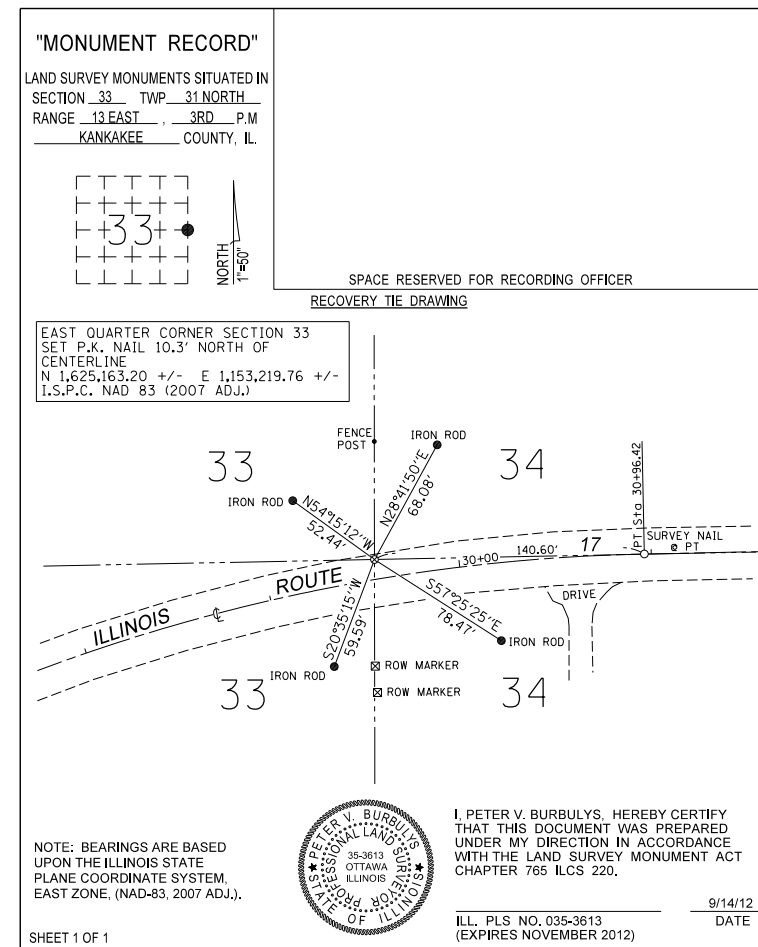
W = LANE WIDTH
e = DESIGN SUPERELEVATION RATE

STATION EQUATION
STA 317+76 BK=
STA 22+48.48 AH

TRANSITION CURVE TABLE

CURVE PI STA.	SUPERELEVATION "e"	LANE WIDTH	SUPERELEVATION TRANSITION LENGTH	TANGENT RUNOUT DISTANCE	SUPERELEVATION RUNOFF LENGTH
27+22	8%	12'	225.1'	21.1'	204'

SUPERELEVATION TRANSITION ON TWO-LANE HIGHWAY



FILE NAME =	USER NAME = pletschr	DESIGNED -	REVISED -
Default	PLT DATE = 10/26/2012	CHECKED -	REVISED -

STATE OF ILLINOIS
DEPARTMENT OF TRANSPORTATION

SUPERELEVATION TRANSITION DETAIL			
SCALE:	SHEET	OF SHEETS	STA. TO STA.

F.A.P RTE.	SECTION	COUNTY	TOTAL SHEETS	SHEET NO.
332	(6, K-15d)LI	KANKAKEE	30	15
CONTRACT NO. 66C14				
ILLINOIS FED. AID PROJECT				