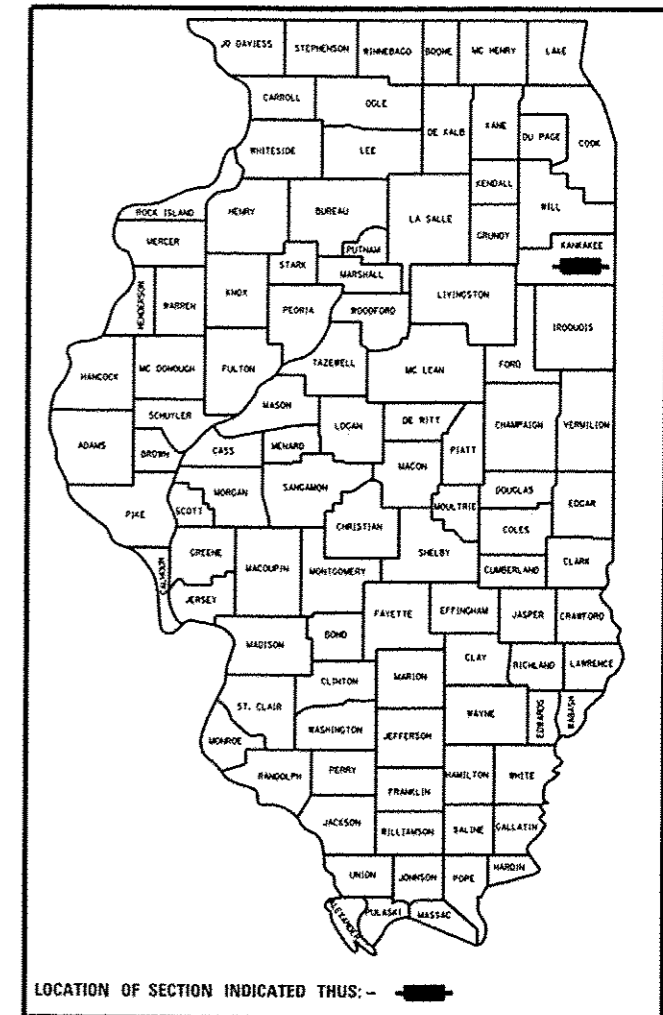


- 1 COVER SHEET
- 2 GENERAL NOTES & LOCATION
- 3-7 SUMMARY OF QUANTITIES
- 8 TYPICAL SECTIONS
- 9-10 SCHEDULES
- 11-14 PLAN AND PROFILE
- 15-20 DETAILS
- 21-22 LIGHTING GENERAL NOTES & TABLES
- 23-30 CROSS SECTIONS

STATE OF ILLINOIS
DEPARTMENT OF TRANSPORTATION
DIVISION OF HIGHWAYS
**PROPOSED
HIGHWAY PLANS**

F.A.P. RTE.	SECTION	COUNTY	TOTAL SHEETS	SHEET NO.
332	16. K-15dL1	KANKAKEE	30	1
		ILLINOIS	CONTRACT NO. 66C14	

D-93-056-12



LOCATION OF SECTION INDICATED THUS: - [black rectangle] -

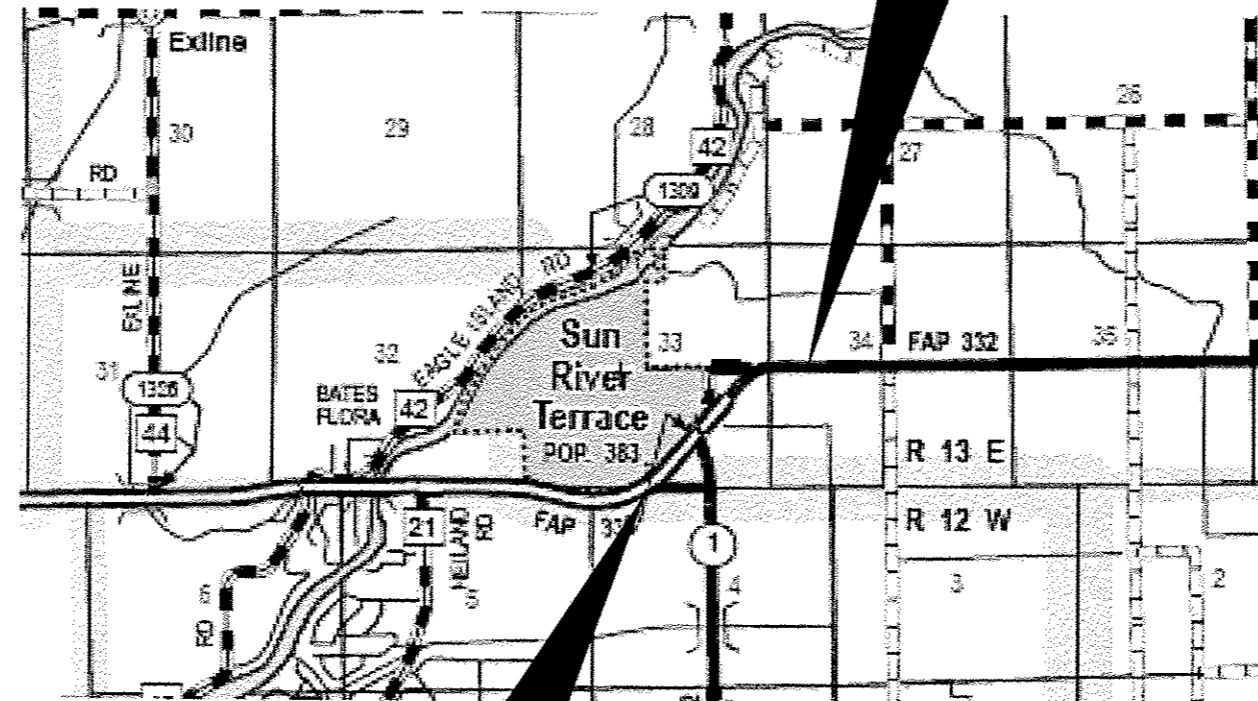
**FAP ROUTE 332 (IL 1/17)
SECTION (6, K-15d)L, I
PROJECT: ACHSIP-0332 (110)
LIGHTING, WIDEN SHOULDERS & RUMBLE STRIPS
KANKAKEE COUNTY**

C-93-107-12

LIST OF ILLINOIS DOT HIGHWAY STANDARDS

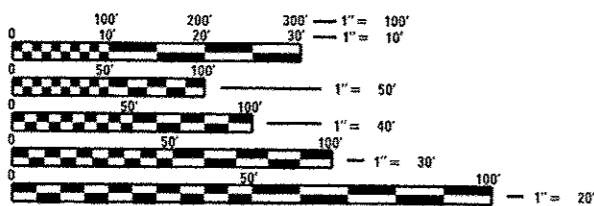
- 000001-06 STANDARD SYMBOLS, ABBREVIATIONS AND PATTERNS
- 001001-02 AREAS OF REINFORCEMENT BARS
- 406201-01 MAILBOX TURNOUT
- 482001-02 HMA SHOULDER ADJACENT TO FLEXIBLE PAVEMENT
- 642001-02 SHOULDER RUMBLE STRIPS, 16 INCH
- 701201-04 LANE CLOSURE, 2L, 2W, DAY ONLY, FOR SPEEDS ≥ 45 MPH
- 701306-03 LANE CLOSURE, 2L, 2W, SLOW MOVING OPERATIONS DAY ONLY, FOR SPEEDS ≥ 45 MPH
- 701311-03 LANE CLOSURE, 2L, 2W, MOVING OPERATIONS - DAY ONLY
- 701326-04 LANE CLOSURE, 2L, 2W, PAVEMENT WIDENING, FOR SPEEDS ≥ 45 MPH
- 701901-03 TRAFFIC CONTROL DEVICES
- 780001-03 TYPICAL PAVEMENT MARKINGS
- 781001-03 TYPICAL APPLICATIONS RAISED REFLECTIVE PAVEMENT MARKERS
- 825006-01 LIGHTING CONTROLLER, POLE MOUNTED, 480V
- 830006-01 LIGHT POLE ALUMINUM DAVIT ARM
- 836001-02 LIGHT POLE FOUNDATION

**PROJECT ENDS
STA 34+00**



**PROJECT BEGINS
STA 288+65**

**STATION EQUATION
STA 317+76 BK=
STA 22+48.48 AH**



FULL SIZE PLANS HAVE BEEN PREPARED USING STANDARD ENGINEERING SCALES. REDUCED SIZED PLANS WILL NOT CONFORM TO STANDARD SCALES. IN MAKING MEASUREMENTS ON REDUCED PLANS, THE ABOVE SCALES MAY BE USED.

J.U.L.I.E.
JOINT UTILITY LOCATION INFORMATION FOR EXCAVATION
1-800-892-0123
OR 811

PROJECT ENGINEER: JOE KANNEL, P.E.
UNIT CHIEF: PAT BRABOY

CONTRACT NO. 66C14

GROSS LENGTH = 4,062.52 FT. = 1.13 MILE
NET LENGTH = 4,062.52 FT. = 1.13 MILE

**FUNCTIONAL CLASSIFICATION—
OTHER ARTERIAL**

2011 ADT = 7750 VPD
PV = 76.46% SU = 5.48% MU = 18.06%

STATE OF ILLINOIS
DEPARTMENT OF TRANSPORTATION
DIVISION OF HIGHWAYS

SUBMITTED 10-26-2012
Paul A. Cochran
DEPUTY DIRECTOR OF HIGHWAYS, REGION ENGINEER

Dec 7 2012
John D. Baranzelli, P.E.
actg ENGINEER OF DESIGN AND ENVIRONMENT

Dec 7 2012
William R. Frey, Jr.
actg DIRECTOR OF HIGHWAYS, CHIEF ENGINEER

**PRINTED BY THE AUTHORITY
OF THE STATE OF ILLINOIS**

GENERAL NOTES

THE THICKNESS OF HMA SHOWN ON THE PLANS IS THE NOMINAL THICKNESS. DEVIATIONS FROM THE NOMINAL THICKNESS WILL BE PERMITTED WHEN SUCH DEVIATIONS OCCUR DUE TO IRREGULARITIES IN THE EXISTING SURFACE OR BASE ON WHICH THE HMA IS PLACED.

THE HMA SURFACE OF ALL MAILBOX TURNOUTS, PRIVATE ENTRANCES, COMMERCIAL ENTRANCES, AND SIDE ROADS SHALL BE MADE NEATLY, IN A WORKMANLIKE MANNER, AND SHALL ACCURATELY CONFORM TO THE SHAPES AND DIMENSIONS SHOWN ON THE PLAN DETAILS. IF REQUIRED BY THE ENGINEER, THE CONTRACTOR SHALL BE REQUIRED TO SAW CUT THE HMA SURFACE TO CONFORM TO THE SHAPES AND DIMENSIONS SHOWN ON THE PLAN DETAILS. THIS WORK SHALL BE INCLUDED IN THE COST OF THE HMA SURFACE.

HMA SHOULDERS SHALL BE CARRIED THROUGH ALL ENTRANCES, SIDE ROADS, AND MAILBOX TURNOUTS. EXCEPTIONS WILL BE SHOWN ON THE PLANS.

EXCEPT AS NOTED ON THE PLANS, PAVEMENT GRADES SHOWN ARE AT THE TOP OF PAVEMENT SURFACES.

THE ENGINEER WILL BE THE SOLE JUDGE CONCERNING CURING TIME FOR THE VARIOUS HMA LIFTS.

FOR STABILIZATION, ALL TYPE III BARRICADES SHALL REQUIRE A MINIMUM OF FOUR SAND BAGS PER BARRICADE.

SEEDING SHALL NOT BE PERMITTED AT ANY TIME WHEN THE GROUND IS FROZEN, WET, OR IN AN UNTILLABLE CONDITION. LOCATIONS TO BE SEEDED WILL BE DETERMINED BY THE ENGINEER.

THE FINISHED EARTHWORK SHALL HAVE A VEGETATION SUSTAINING SOIL COVERING THE TOP FOUR INCHES (100 MILLIMETERS) IN AREAS TO BE SEEDED OR SODDED. THE VEGETATION SUSTAINING SOIL REQUIRED WILL NOT BE PAID FOR SEPARATELY BUT SHALL BE INCLUDED IN THE COST OF EARTH EXCAVATION.

ALL ELEVATIONS REFERRING TO U.S.G.S. MEAN SEA LEVEL DATUM.

ADDITIONAL LEVELING BINDER, AS SHOWN AS IN THE SCHEDULES OF QUANTITIES, HAS BEEN ADDED TO THE QUANTITIES TO CORRECT TO THE SUPERELEVATIONS ON SECTIONS OF EXISTING ROADWAYS.

ABANDONED UNDERGROUND UTILITIES THAT CONFLICT WITH CONSTRUCTION SHALL BE DISPOSED OF OUTSIDE THE LIMITS OF THE RIGHT OF WAY ACCORDING TO ARTICLE 202.03 OF THE STANDARD SPECIFICATIONS AND AS DIRECTED BY THE ENGINEER. THIS WORK WILL NOT BE PAID FOR SEPARATELY, BUT SHALL BE INCLUDED IN THE COST OF EARTH EXCAVATION.

ANY REFERENCE TO A STANDARD IN THESE PLANS SHALL BE INTERPRETED TO MEAN THE EDITION AS INDICATED BY THE SUBNUMBER SHOWN IN THE LIST OF STANDARDS OR THE COPY INCLUDED IN THESE PLANS.

THE FOLLOWING RATES OF APPLICATION HAVE BEEN USED IN CALCULATING PLAN QUANTITIES:

GRANULAR MATERIALS	2.05	TONS / CU YD
AGGREGATE (PRIME COAT)	0.002	TONS / SQ YD
HMA RESURFACING	112	LBS / SQ YD / IN
SHORT TERM PAVEMENT MARKING	10	FT /100 FT OF APPLICATION
MIX FOR CRACKS, JTS & FLGWYS	0.0003	TONS / SQ YD
LEVEL BINDER (HAND METHOD)	0.0005	TONS / SQ YD
AGGREGATE DITCH CHECKS	5	TONS AGGREGATE

BITUMINOUS MATERIALS (PRIME COAT) RATES		
SURFACE TYPE	ESTIMATED TRUCK APPLICATION RATE	RESIDUAL RATE
AGGREGATE BASES	0.375 GAL / SQ YD	N/A
MILLED HMA OR PCC PAVEMENT	0.08 GAL / SQ YD	0.04 GAL / SQ YD
EXISTING PAVEMENT	0.05 GAL / SQ YD	0.025 GAL / SQ YD
FOG COAT (BETWEEN ADDITIONAL HMA LIFTS)	0.05 GAL / SQ YD	0.025 GAL / SQ YD

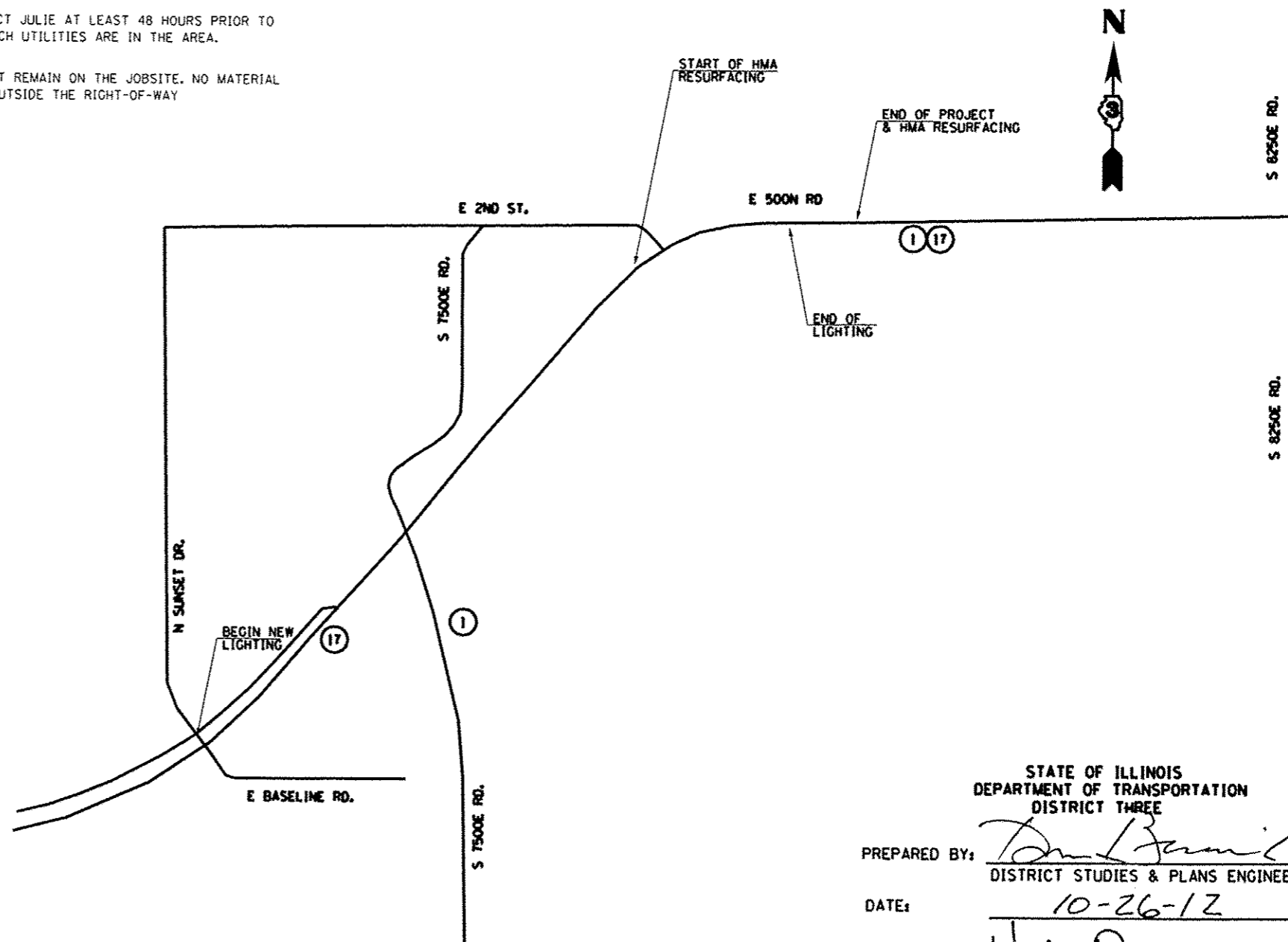
ESTIMATED TRUCK APPLICATION RATE USED FOR CALCULATING PLAN QUANTITIES

ALL DAMAGE TO DEPARTMENT OWNED UNDERGROUND FACILITIES, CAUSED BY THE CONTRACTOR SHALL BE REPAIRED TO THE SATISFACTION OF THE DEPARTMENT AT THE CONTRACTOR'S EXPENSE. THIS SHALL INCLUDE ALL TEMPORARY REPAIRS REQUIRED TO KEEP THE FACILITY OPERATIONAL WHILE MATERIAL IS BEING OBTAINED TO MAKE PERMANENT REPAIRS. SPlicing OF ELECTRIC CABLE SHALL NOT BE ALLOWED. ELECTRIC CABLE SHALL BE REPLACED FROM POLE TO POLE OR CONTROLLER.

THE WORK REQUIRED TO CONNECT ANY SEWER TO AN EXISTING DRAINAGE STRUCTURE OR PIPE WILL NOT BE PAID FOR SEPARATELY, BUT SHALL BE CONSIDERED AS INCLUDED IN THE CONTRACT UNIT PRICE BID FOR THE SEWER ITEMS.

THE CONTRACTOR SHALL CONTACT JULIE AT LEAST 48 HOURS PRIOR TO EXCAVATION TO DETERMINE WHICH UTILITIES ARE IN THE AREA.

ALL EXCAVATED MATERIAL MUST REMAIN ON THE JOBSITE. NO MATERIAL IS ALLOWED TO BE REMOVED OUTSIDE THE RIGHT-OF-WAY



LOCATION MAP

STATE OF ILLINOIS
DEPARTMENT OF TRANSPORTATION
DISTRICT THREE

PREPARED BY: Tom Bernick
DISTRICT STUDIES & PLANS ENGINEER

DATE: 10-26-12

EXAMINED BY: Wah Juegan
DISTRICT CONSTRUCTION ENGINEER

[Signature]
DISTRICT MATERIALS ENGINEER

[Signature]
DISTRICT OPERATIONS ENGINEER

FILE NAME *	USER NAME * #USER#	DESIGNED -	REVISED -	STATE OF ILLINOIS DEPARTMENT OF TRANSPORTATION	LOCATION MAP & GENERAL NOTES			F.A.P. RTE.	SECTION	COUNTY	TOTAL SHEETS	SHEET NO.
#FILE#		DRAWN -	REVISED -		IL 1 & 17			332	(6. R-150L.1	KANKAKEE	50	2
#MODELNAME#	PLOT SCALE * #SCALE#	CHECKED -	REVISED -		SCALE:	SHEET	OF	SHEETS	STA.	TO STA.	CONTRACT NO. 66C14	
	PLOT DATE * #DATE#	DATE -	REVISED -		ILLINOIS FED. AID PROJECT							

CODE NO.	ITEM	UNIT	TOTAL QUANTITY	CONSTR. CODE	
				ROADWAY	RURAL
46603540	POLYMERIZED HOT-MIX ASPHALT SURFACE COURSE, MIX "D", N70	TON	717	717	
40800050	INCIDENTAL HOT-MIX ASPHALT SURFACING	TON	33	33	
44000155	HOT-MIX ASPHALT SURFACE REMOVAL, 1 1/2"	50 YD	3584	3584	
44300200	STRIP REFLECTIVE CRACK CONTROL TREATMENT	FOOT	2303	2303	
48203027	HOT-MIX ASPHALT SHOULDERS, 7 1/2"	50 YD	1194	1194	
50800105	REINFORCEMENT BARS	POUND	18	18	
542A0229	PIPE CULVERTS, CLASS A, TYPE 1 24"	FOOT	2	2	
54002030	EXPANSION BOLTS 3/4 INCH	EACH	8	8	
54213459	END SECTIONS 24"	EACH	1	1	
54248510	CONCRETE COLLAR	CU YD	0.33	0.33	
64200116	SHOULDER RUMBLE STRIPS, 16 INCH	FOOT	2303	2303	
66700205	PERMANENT SURVEY MARKERS, TYPE I	EACH	1	1	
67000400	ENGINEER'S FIELD OFFICE, TYPE A	CAL MO	3	3	
67100100	MOBILIZATION	L SUM	1	1	

CONSTR. CODE
90% FED. / 10% STATE

ROADWAY
0021
RURAL

CONSTR. CODE
90% FED / 10% STATE

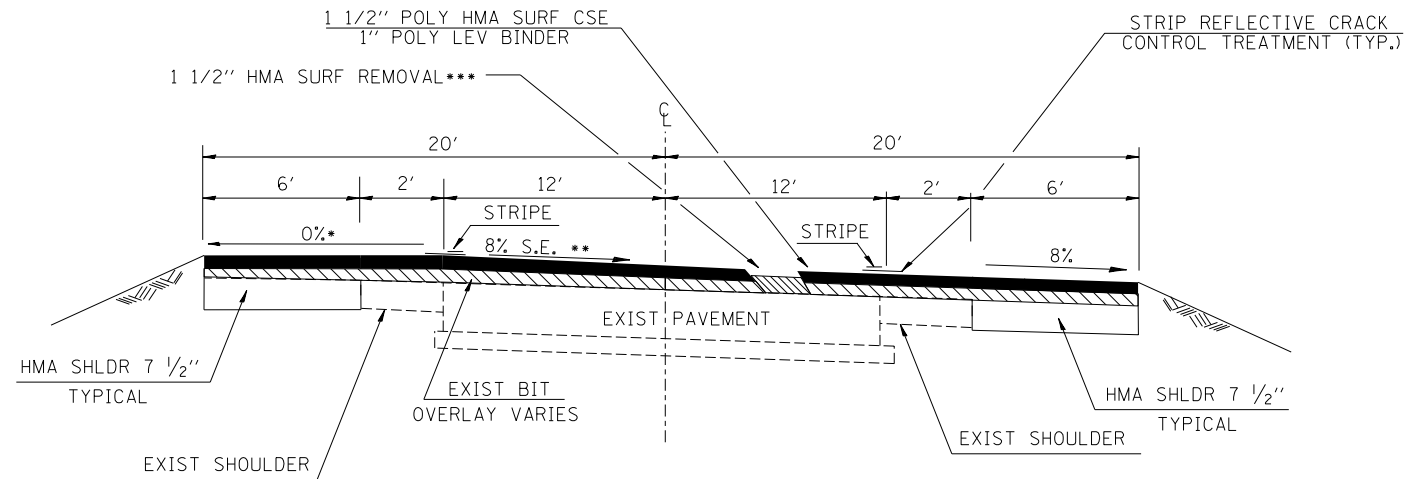
CODE NO.	ITEM	UNIT	TOTAL QUANTITY	CONSTR. CODE	
				ROADWAY 0021	RURAL
70103015	TRAFFIC CONTROL SURVEILLANCE	CAL DA	5	5	
70100460	TRAFFIC CONTROL AND PROTECTION, STANDARD 701306	L SUM	1	1	
70100450	TRAFFIC CONTROL AND PROTECTION, STANDARD 701201	L SUM	1	1	
70100500	TRAFFIC CONTROL AND PROTECTION, STANDARD 701326	L SUM	1	1	
70300100	SHORT TERM PAVEMENT MARKING	FOOT	345	345	
70300220	TEMPORARY PAVEMENT MARKING - LINE 4"	FOOT	2303	2303	
70301000	WORK ZONE PAVEMENT MARKING REMOVAL	50 FT	38	38	
* 78005110	EPOXY PAVEMENT MARKING - LINE 4"	FOOT	4606	4606	
* 78100100	RAISED REFLECTIVE PAVEMENT MARKER	EACH	14	14	
* 78300200	RAISED REFLECTIVE PAVEMENT MARKER REMOVAL	EACH	14	14	
* 80400100	ELECTRIC SERVICE INSTALLATION	EACH	1	1	
* 81028760	UNDERGROUND CONDUIT, COILABLE NONMETALLIC CONDUIT, 2 1/2" DIA.	FOOT	364	364	
* 81028780	UNDERGROUND CONDUIT, COILABLE NONMETALLIC CONDUIT, 3 1/2" DIA.	FOOT	70	70	
* 81603000	UNIT DUCT, 600V, 2-10 NO.2, 1/0 NO.3 GROUND, (XLP-TYPE USE), 3/4" DIA, POLYETHYLENE	FOOT	6605	6605	

* Specialty Items

FILE NAME: c:\pwork\pados\pletsch\66620000\103	USER NAME: c:\pwork\pados\pletsch\66620000\103	DESIGNED: -	REVISED: -	STATE OF ILLINOIS DEPARTMENT OF TRANSPORTATION	SUMMARY	F.A.P. RTE.:	SECTION:	COUNTY:	TOTAL SHEETS:	SHEET NO.:
PLT OF SCALE: 1/8" = 1'-0"	CHECKED: -	REVISED: -	332			(6, K-15d)LLI	KANKAKEE	30	5	
DATE: - 10/05/2012	DATE: -	REVISED: -	CONTRACT NO. 66C14							
			ILLINOIS FED. AID PROJECT							

TYPICAL SECTIONS

***HMA SURF REMOV ONLY
UNDER EXIST PVT-28" WIDE

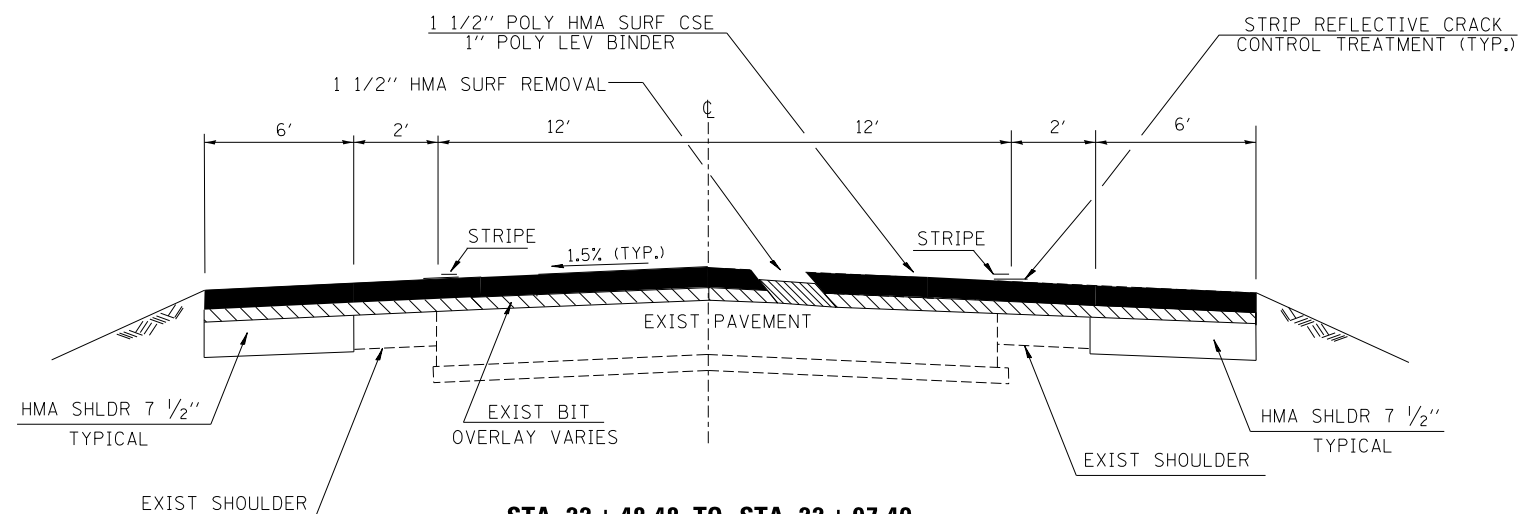


**STA. 22+97.40 TO STA. 30+96.42
IN FULL SUPERELEVATION**

• SLOPE SHOULDER AT 0% IN FULL SUPERELEVATION ONLY
TRANSITION TO 4% WHEN ROAD IS AT NORMAL CROWN
WHEN THE SUPERELEVATION RATE OF THE PAVEMENT IS
BETWEEN 0% AND 4% THE SHOULDER SLOPED AT 4%.
WHEN THE SUPERELEVATION RATE OF THE PAVEMENT
EXCEEDS 4%, THE SHOULDER SHALL BE SLOPED SO THAT THE
ALGEBRAIC DIFFERENCE BETWEEN PAVEMENT AND SHOULDER
WILL NOT BE GREATER THAN 8%
(SEE STANDARD 482001)

** EXISTING S.E. VARIES BETWEEN 7% TO
8%. ADDITIONAL QUANTITIES HAVE BEEN ADDED
TO THE SCHEDULES TO CORRECT THE S.E.
TO 8%

	Surface	Leveling Binder	Shoulder Bottom Lifts	Shoulder Top Lift
PG Grade	SBS PG70-22	SBS PG70-22	PG64-22	PG64-22
Design Air Voids	4.0% @ N70	4.0% @ N70	4.0% @ N50	4.0% @ N50
Mixture Composition	IL 9.5	IL 9.5	IL 19.0	IL 9.5
Friction Aggregate	Mixture D	N/A	N/A	Mixture C
Density Control Method	Cores	Satisfaction of Engineer	Cores	Cores



**STA. 22+48.48 TO STA. 22+97.40
STA. 30+96.42 TO STA. 34+00**

**STATION EQUATION
STA 317+76 BK=
STA 22+48.48 AH**

MAINLINE SCHEDULE												
STA. TO STA.		LENGTH	AREA	POLY HMA SURF CSE MIX D N70	HMA SHOULDER 7 1/2"	POLY LEVEL BINDER (MM)	LEVEL BINDER (HM)	HMA SURF REM 1 1/2"*	MIX FOR JTS, CRACKS & FLGWYS	BIT. MAT'L (PR CT)	AGG. (PR CT)	TEMP RAMP
		FT	SQ YD	TONS	SQ YD	TONS	TONS	SQ YD	TONS	GAL	TONS	SQ YD
22+48.48	34+00	1,152	5118	716.5	1535.4	358.3	2.6	3582.5	1.5	665.3	10.2	32.0
STA EQ 317+76 BK = 22+48.48 AH			5118									
• ADD'L QUANTITY FOR SUPERELEVATION						107.5						
GRAND TOTALS				717	1535	466	3	3583	2	665	10	32

•MILL THE EXISTING PVT ONLY-28' TOTAL. DO NOT MILL THE NEW 6' HMA SHOULDER

PAVEMENT MARKING SCHEDULE											
LOCATION		DISTANCE	EPOXY 4"	TEMP MARK 4"	CENTERLINE RUMBLE STRIPS 16"	SHOULDER RUMBLE STRIPS 16"	STRIP REFLECTIVE CRACK CONTROL TREATMENT	RAISED REFLECTIVE PVMT MARKERS	REMOVAL RAISED REFLECTIVE PVT MARKERS	SHORT-TERM PAVT MARK	WORK ZONE PAVT MARK REM
STA		FOOT	FOOT	FOOT	FOOT	FOOT	FOOT	EACH	EACH	FOOT	SQ. FOOT
RURAL											
22+48.48	TO 34+00	1151.52	2303	2303	1152	2303	2303	14	14	345	38
NO PASSING ZONES(1)			2303								
GRAND TOTAL		1152	4606	2303	1152	2303	2303	14	14	345	38

(1) R.E. TO VERIFY NO PASSING ZONES PRIOR TO MILLING OPERATION

EARTH EXCAVATION SCHEDULE					
(1) STA TO STA	(2) EARTH EX	(3) EARTH EX ADJ FOR SHRINKAGE	(4) EMBANK	(5) EARTHWORK BAL WASTE(+) OR SHORTAGE(-)	
	LANE	CU YD	CU YD	CU YD	CU YD
FOR SHOULDER WIDENING AND GRADING EXISTING SHOULDER STA 22+48 TO STA 34+00	EB/WB	360	270	142	128
GRAND TOTALS		360	270	142	128

COLUMNS 2, AND 4-LOCATION AND QUANTITIES FROM CROSS SECTIONS
 COLUMN 3- QUANTITY OF EARTH EXCAVATION (CUT) ADJUSTED FOR A SHRINKAGE FACTOR OF 25% (1- SHRINKAGE FACTOR)
 COLUMN 5 EARTHWORK REQUIRED (PAY FOR AS FINISHED EXCAVATION)

NO EXCAVATED MATERIAL IS ALLOWED TO BE REMOVED FROM THE PROJECT
 SPREAD EXCESS MATERIAL ON FORESLOPE EVENLY SO THAT NOT PILES OR WINDROWS OF EMBANKMENT ARE VISIBLE

PIPE CULVERT EXTENTIONS					
LOCATION	SIDE	EXISTING CULVERT SIZE	PIPE CULV, CL A TY 1 24"	END SECTIONS 24"	CONCRETE HEADWALL REMOVAL PARTIAL
STA			FOOT	EACH	EACH
317+76	RT	3'X3'	2	1	1
TOTALS			2	1	1

SIDE ROAD & ENTRANCES										
NAME	MATERIAL	STATION	TYPE	RT/LT**	HMA SURF REM VAR DEPTH	INCIDENTAL HMA SURF	BIT MATLS PR CT	AGG PR CT	TEMP. RAMP FOR SIDEROAD	FURN. EX*
					SQ YD	TON	GAL	TON	SQ YD	CU YD
E 2ND ST.	HMA	25+92	SR	LT	185	20.7	24.1	0.4	8.00	2.0
	HMA	30+62	PE	RT	32	3.6	4.2	0.1		
	HMA	32+40	PE	RT	39	4.4	5.1	0.1		
	HMA	33+89	PE	RT	36	4.0	4.7	0.1		
TOTALS					292	33	38	1	8	2

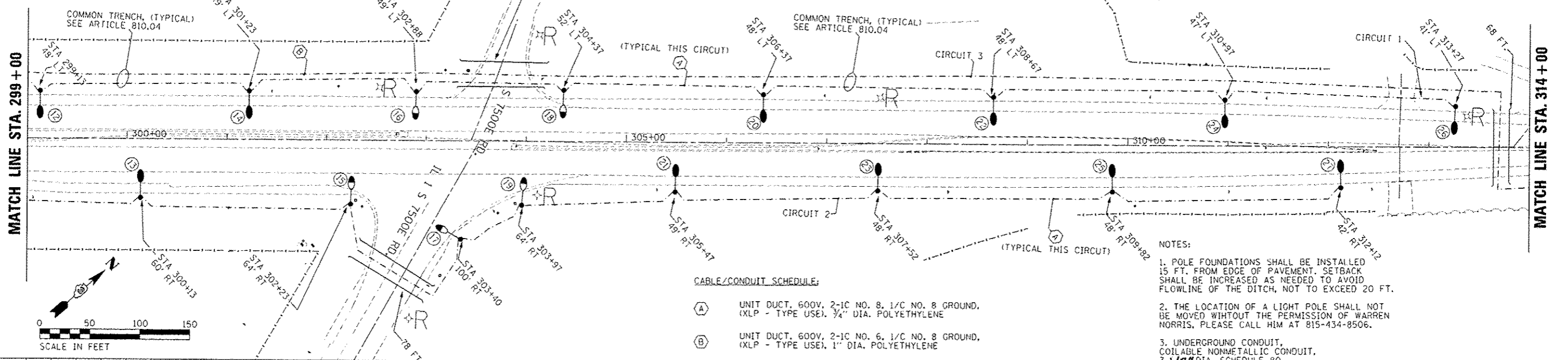
SEEDING SCHEDULE							
LOCATION	LANE	SEEDING CLASS 2A	NITROGEN FERTILIZER NUTRIENT	POTASSIUM FERTILIZER NUTRIENT	PHOSPHOROUS FERTILIZER NUTRIENT	MULCH METHOD 2	TEMP EROSION CONTROL SEEDING
STA TO STA		ACRE	POUND	POUND	POUND	ACRE	POUND
STA 22+48 TO STA 34+00	EB/WB	0.6	54	54	54	0.6	120
GRAND TOTAL		0.6	54	54	54	0.6	120

SURVEY SECTION CORNER						
ILL 1, 17	0.7 MI E OF IL 1 (S) TO 0.2 MI E OF IL 1 (S), IN SUN RIVER TERRACE					
STATION	DESCRIPTION	EXISTING MONUMENT TYPE	PROPOSED MONUMENT TYPE	MONUMENT RECORD TO BE RECORDED	RESPONSIBILITY	
	E. OTR. COR. SEC. 33, T.31N., R.13E., 3RD. P.M.	PK NAIL	TYPE 1	YES	2	
NOTE: FOR ALL MONUMENT LOCATIONS SEE TIE SKETCHES						
RESPONSIBILITY:						
1) RESIDENT TO RE-ESTABLISH MONUMENT						
2) RESIDENT TO RE-ESTABLISH MONUMENT AND FURNISH TIE SKETCHES TO D-3 PLATS AND PLANS (PAY ITEM REQUIRED. PERMANENT SURVEY MARKER, TYPE 1)						
3) PROFESSIONAL LAND SURVEYOR TO RE-ESTABLISH MONUMENT, RECORD NEW MONUMENT RECORD, AND PROVIDE COPY TO D-3 PLATS AND PLANS (PAY ITEM REQUIRED - LAND SECTION MARKERS)						

LIGHT POLE IDENTIFICATION:
 39-1 LOCATION NUMBER
 POLE NUMBER
 STA. 293+23 STATION
 50' 0/S OFFSET FROM EDGE OF PAVEMENT

LEGEND:

- ☒ EXISTING LIGHTING CONTROLLER TO BE REMOVED.
- Ⓜ EXISTING LIGHTING UNIT TO BE REMOVED, NO SALVAGE.
- LIGHT POLE, ALUMINUM, 45 FT. M.H. WITH 15 FT. DAVIT ARM WITH 250 WATT HORIZONTAL MOUNT LUMINAIRE, BREAKAWAY COUPLINGS
- LIGHT POLE, ALUMINUM, 50 FT. M.H. WITH 15 FT. DAVIT ARM WITH 400 WATT HORIZONTAL MOUNT LUMINAIRE, BREAKAWAY COUPLINGS
- UNIT DUCT, SIZE AS INDICATED
- UNDERGROUND CONDUIT, COILABLE NONMETALLIC CONDUIT, 2 1/2" DIA. (UNLESS NOTED OTHERWISE), SCHEDULE 80.
- ELECTRIC SERVICE INSTALLATION, 240/480 VOLT, 1 PHASE, 4 WIRE
- Ⓜ LIGHTING CONTROLLER, POLE MOUNTED, 480 VOLT, 60 AMP

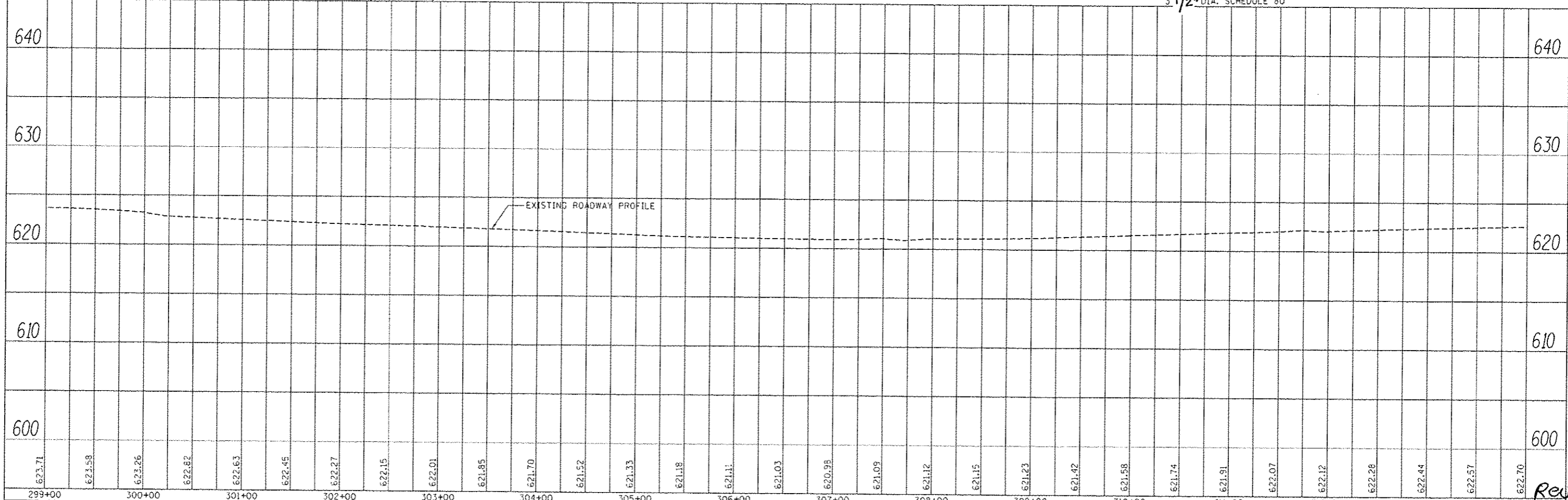


- CABLE/CONDUIT SCHEDULE:**
- (A) UNIT DUCT, 600V, 2-1C NO. 8, 1/C NO. 8 GROUND, (XLP - TYPE USE), 3/4" DIA. POLYETHYLENE
 - (B) UNIT DUCT, 600V, 2-1C NO. 6, 1/C NO. 8 GROUND, (XLP - TYPE USE), 1" DIA. POLYETHYLENE

- NOTES:**
1. POLE FOUNDATIONS SHALL BE INSTALLED 15 FT. FROM EDGE OF PAVEMENT. SETBACK SHALL BE INCREASED AS NEEDED TO AVOID FLOWLINE OF THE DITCH, NOT TO EXCEED 20 FT.
 2. THE LOCATION OF A LIGHT POLE SHALL NOT BE MOVED WITHOUT THE PERMISSION OF WARREN NORRIS, PLEASE CALL HIM AT 815-434-8506.
 3. UNDERGROUND CONDUIT, COILABLE NONMETALLIC CONDUIT, 3 1/2" DIA. SCHEDULE 80

PLAN	DATE
BY	
NO.	
DATE	
NO.	
DATE	
NO.	
DATE	

PROFILE	DATE
BY	
NO.	
DATE	
NO.	
DATE	
NO.	
DATE	



FILE NAME	USER NAME = platechr	DESIGNED -	REVISED -	STATE OF ILLINOIS DEPARTMENT OF TRANSPORTATION	PLAN & PROFILE	F.A.P. RTE.	SECTION	COUNTY	TOTAL SHEETS	SHEET NO.	
Default	14-sh-p1p-f.dgn	DRAWN -	REVISED -			352	16, K-15-DL-I	KANKAKEE	50	12	
	PLOT SCALE = 1/8"=1'-0"	CHECKED -	REVISED -			CONTRACT NO. 66C14					
	PLOT DATE = 10/26/2012	DATE -	REVISED -			ILLINOIS FED. AID PROJECT					

Rev.

NOTES:

- POLE FOUNDATIONS SHALL BE INSTALLED 15 FT. FROM EDGE OF PAVEMENT. SETBACK SHALL BE INCREASED AS NEEDED TO AVOID FLOWLINE OF THE DITCH, NOT TO EXCEED 20 FT.
- THE LOCATION OF A LIGHT POLE SHALL NOT BE MOVED WITHOUT THE PERMISSION OF WARREN NORRIS, PLEASE CALL HIM AT 815-434-8506.

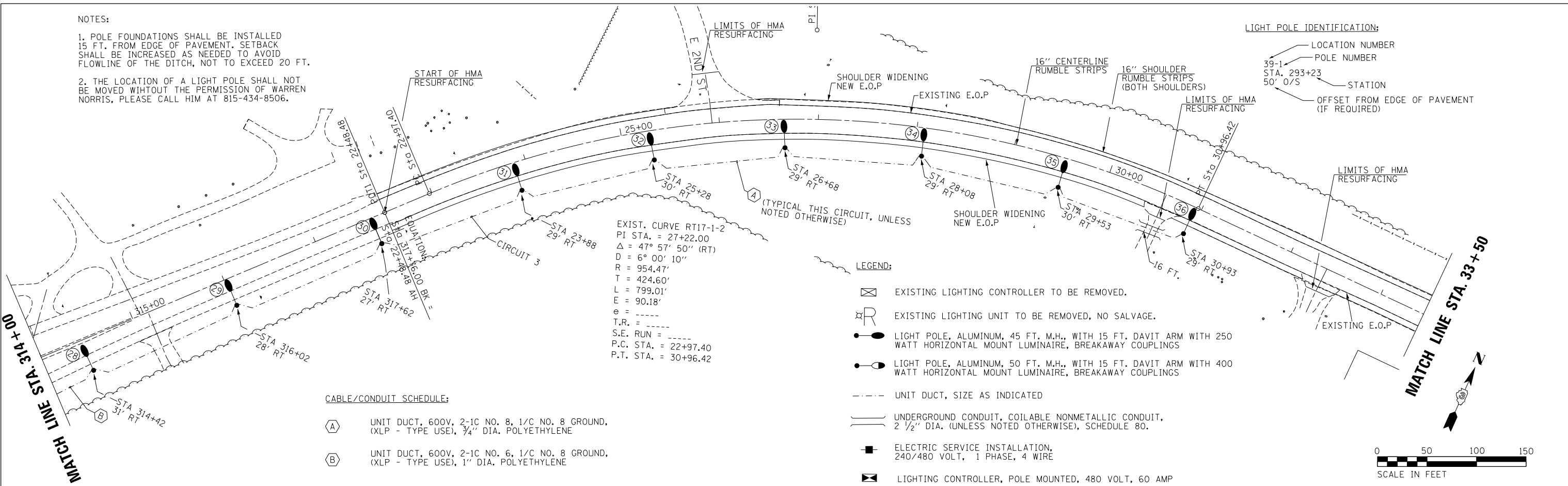
START OF HMA RESURFACING

LIMITS OF HMA RESURFACING

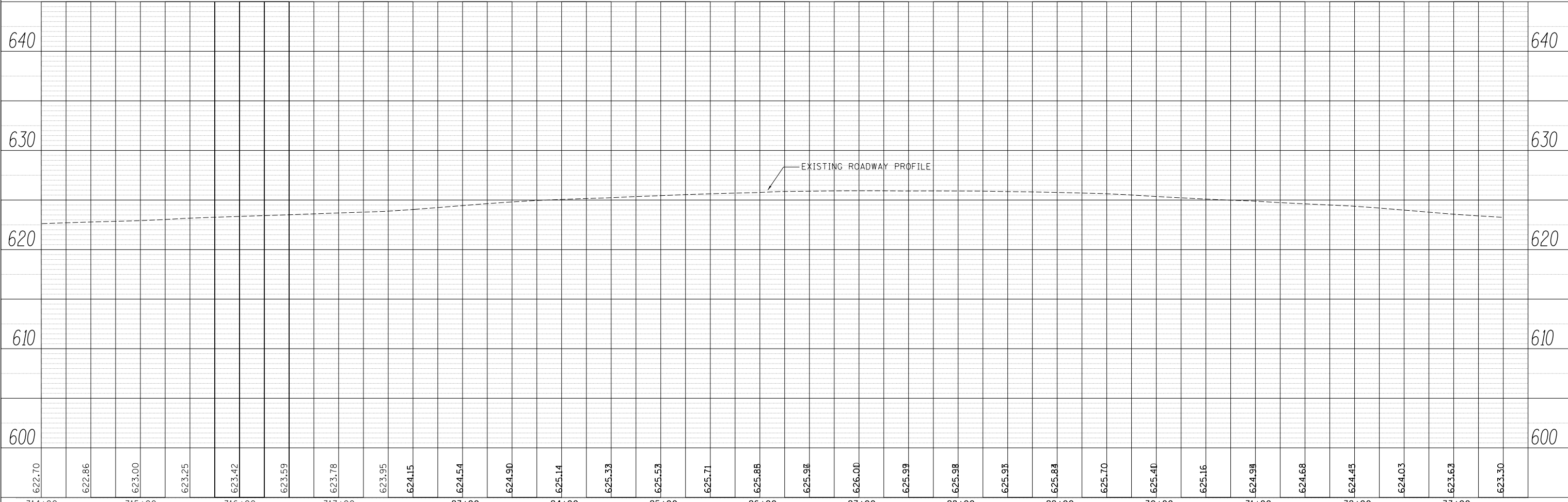
LIGHT POLE IDENTIFICATION:

- LOCATION NUMBER
- POLE NUMBER
- STATION
- OFFSET FROM EDGE OF PAVEMENT (IF REQUIRED)

PLAN	SURVEYED	DATE
	PLOTTED	
	CHECKED	
	NOTED	
	FILE NAME	
	NO.	



PROFILE	SURVEYED	DATE
	PLOTTED	
	CHECKED	
	NOTED	
	FILE NAME	
	NO.	



FILE NAME =	USER NAME = pletschr	DESIGNED -	REVISED -
c:\pwork\pwidot\pletschr\d0300202\0366C14-sh1-plnpr.f.dgn		DRAWN -	REVISED -
Default	PLOT SCALE = 100.0000' / in.	CHECKED -	REVISED -
	PLOT DATE = 10/26/2012	DATE -	REVISED -

STATE OF ILLINOIS
DEPARTMENT OF TRANSPORTATION

PLAN & PROFILE

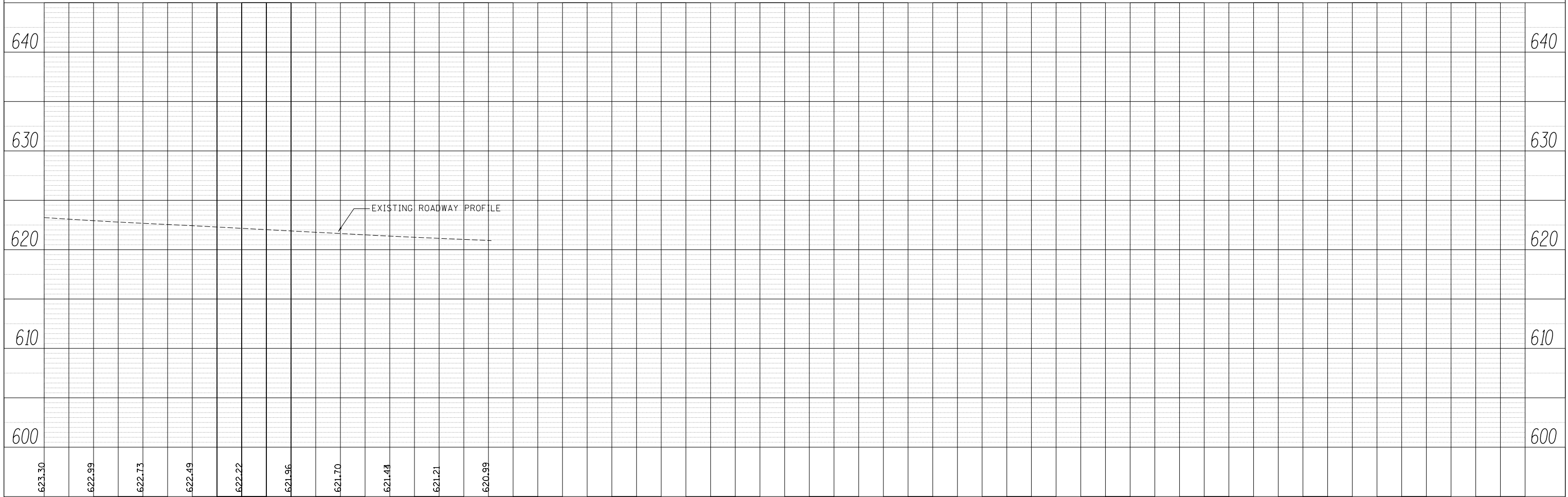
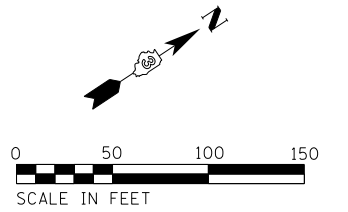
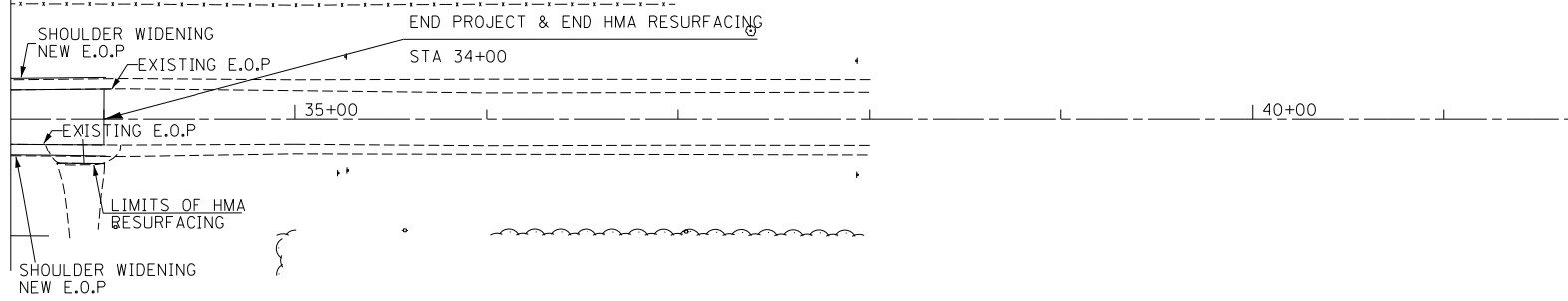
SCALE: SHEET 3 OF 4 SHEETS STA. 314+00 TO STA. 33+50

F.A.P. RTE.	SECTION	COUNTY	TOTAL SHEETS	SHEET NO.
332	(6, K-15)JL,I	KANKAKEE	30	13
CONTRACT NO. 66C14			ILLINOIS FED. AID PROJECT	

PLAN	SURVEYED	BY	DATE
	PLOTTED		
	CHECKED		
	ALIGNED		
	FILE NAME		
	NO.		

PROFILE	SURVEYED	BY	DATE
	PLOTTED		
	CHECKED		
	GRADES		
	STRUCTURE		
	NOTATRS		
	CHFD		
	NO.		

MATCH LINE STA. 33 + 50



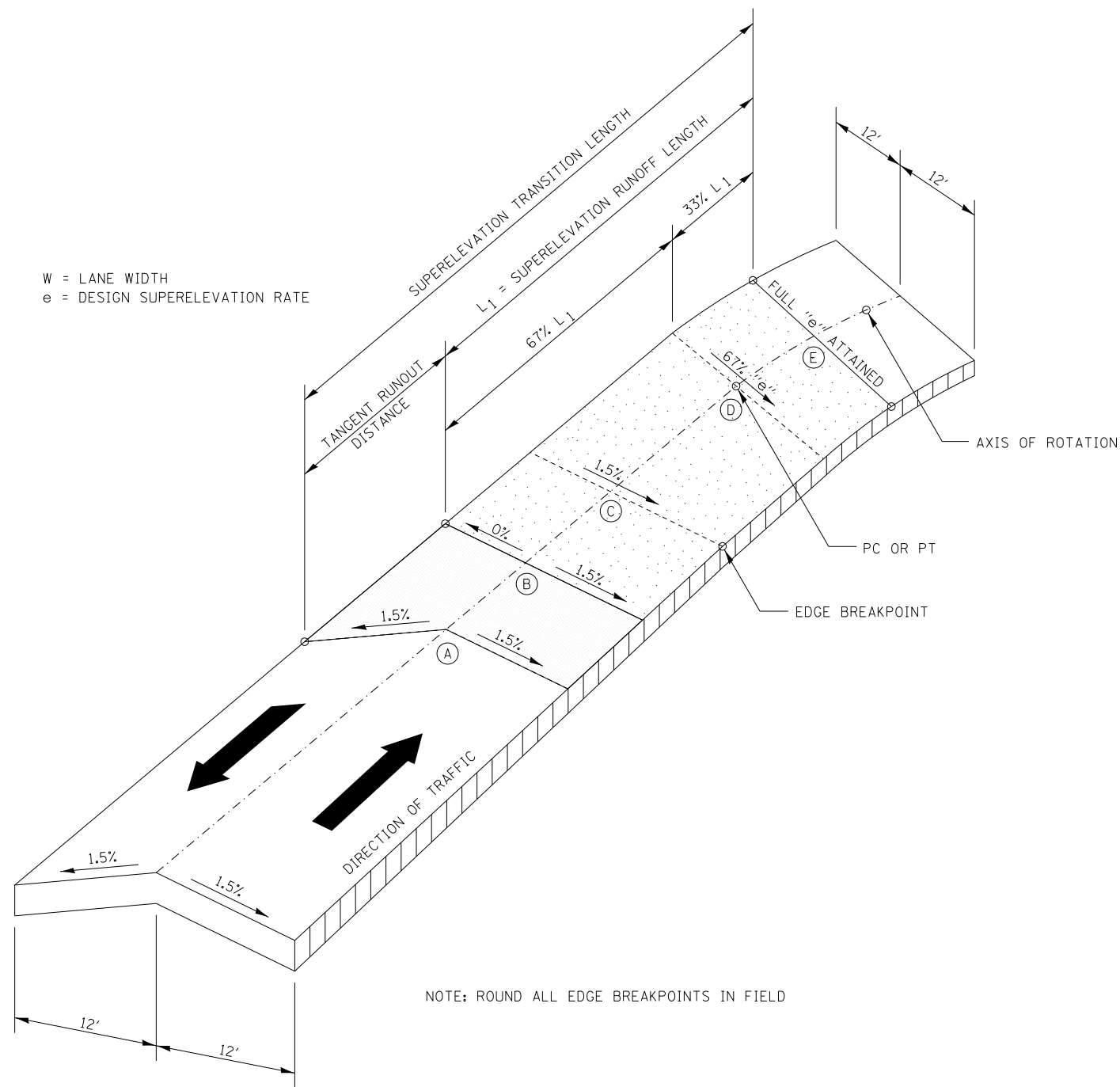
FILE NAME =	USER NAME = pletschr	DESIGNED -	REVISED -
c:\pwork\pwidot\pletschr\d0300202\036614-sh-t-plnpr.f.dgn		DRAWN -	REVISED -
Default	PLOT SCALE = 100.0000' / in.	CHECKED -	REVISED -
	PLOT DATE = 10/26/2012	DATE -	REVISED -

**STATE OF ILLINOIS
DEPARTMENT OF TRANSPORTATION**

PLAN & PROFILE

SCALE: SHEET 4 OF 4 SHEETS STA. 33+50 TO STA. 41+00

F.A.P. RTE.	SECTION	COUNTY	TOTAL SHEETS	SHEET NO.
332	(6, K-15d)L,I	KANKAKEE	30	14
			CONTRACT NO. 66C14	
ILLINOIS FED. AID PROJECT				



W = LANE WIDTH
e = DESIGN SUPERELEVATION RATE

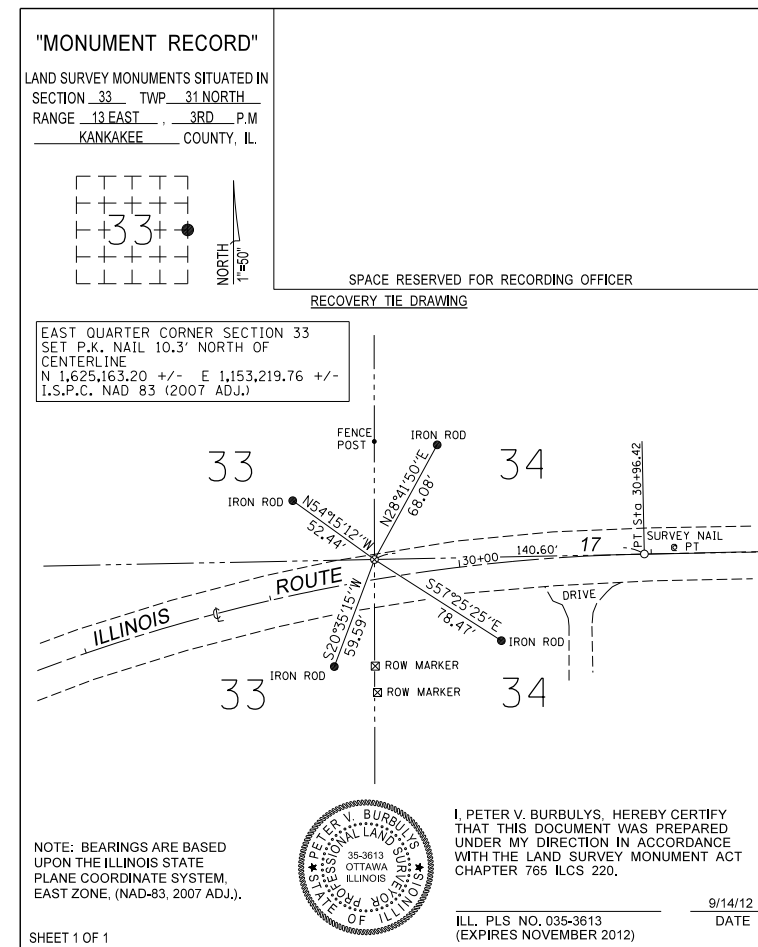
NOTE: ROUND ALL EDGE BREAKPOINTS IN FIELD

STATION EQUATION
STA 317+76 BK=
STA 22+48.48 AH

TRANSITION CURVE TABLE

CURVE PI STA.	SUPERELEVATION "e"	LANE WIDTH	SUPERELEVATION TRANSITION LENGTH	TANGENT RUNOUT DISTANCE	SUPERELEVATION RUNOFF LENGTH
27+22	8%	12'	225.1'	21.1'	204'

SUPERELEVATION TRANSITION ON TWO-LANE HIGHWAY



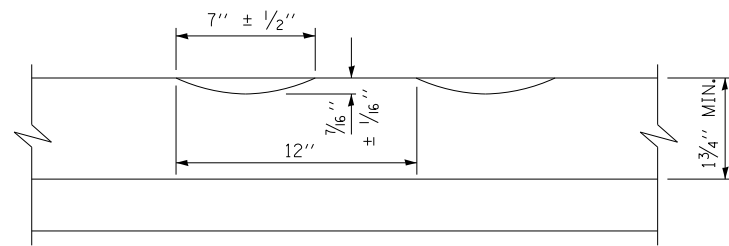
FILE NAME =	USER NAME = pletschr	DESIGNED -	REVISED -
Default	PLT DATE = 10/26/2012	CHECKED -	REVISED -

STATE OF ILLINOIS
DEPARTMENT OF TRANSPORTATION

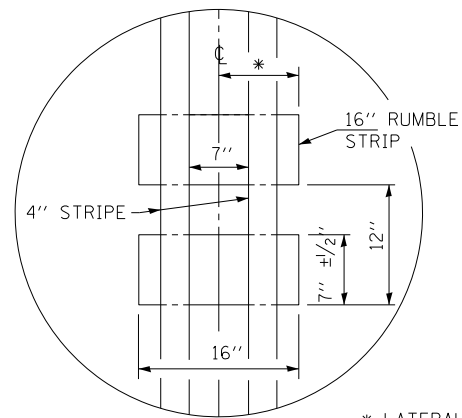
SUPERELEVATION TRANSITION DETAIL

SCALE: SHEET OF SHEETS STA. TO STA.

F.A.P. RTE.	SECTION	COUNTY	TOTAL SHEETS	SHEET NO.
332	(6, K-15d)LI	KANKAKEE	30	15
CONTRACT NO. 66C14				
ILLINOIS FED. AID PROJECT				

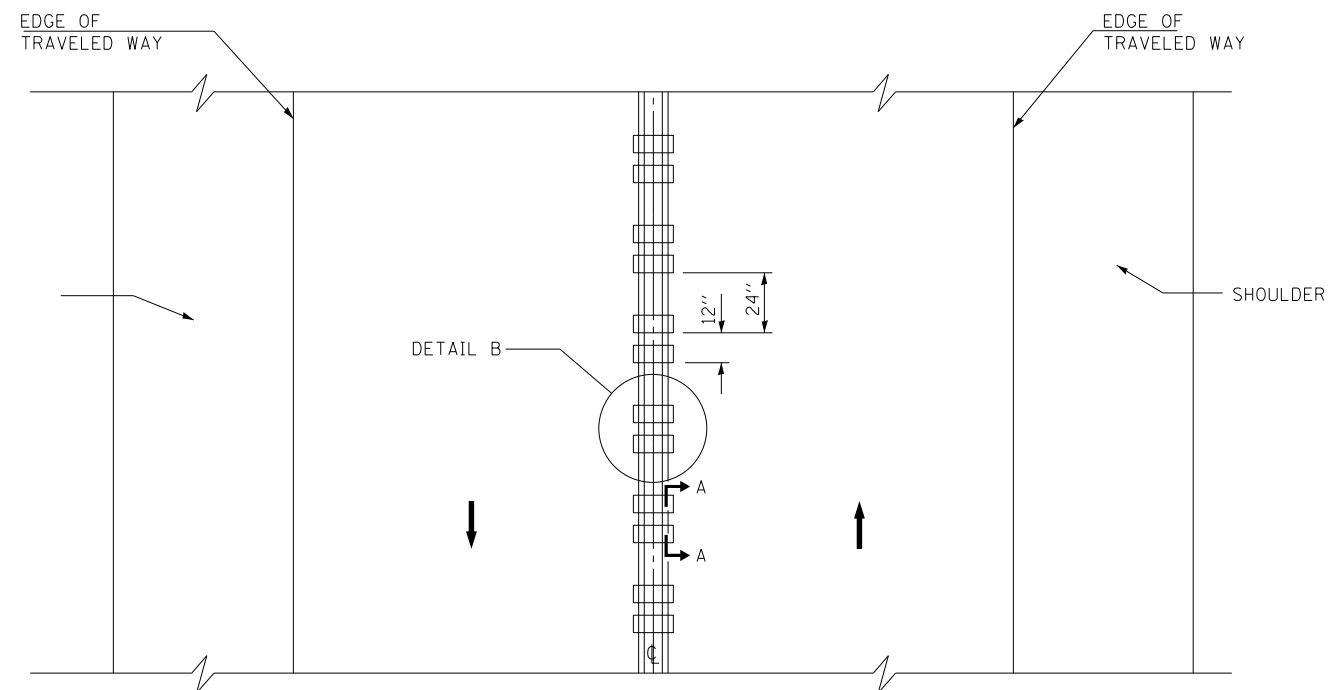


SECTION A-A



DETAIL B

* LATERAL DEVIATION SHALL NOT EXCEED ONE INCH IN 100 FEET.



TWO-WAY ROAD

GENERAL NOTES

SEE DETAILS FOR STRIPING.

RUMBLE STRIPS SHALL NOT BE PLACED ON BRIDGES.

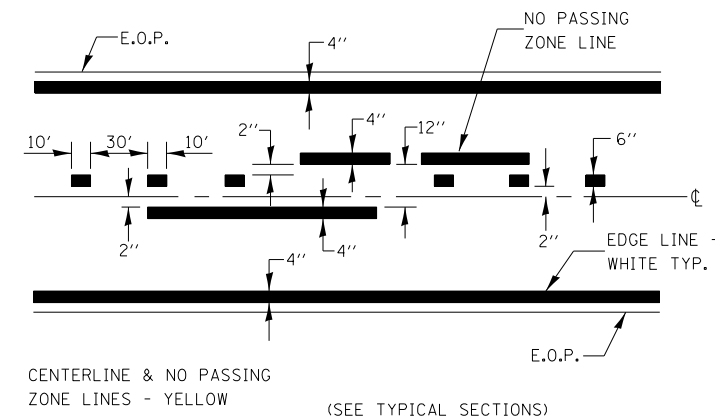
ALL RUMBLE STRIPS SHALL BE MILLED.

CENTERLINE RUMBLE STRIPS SHALL BE CONTINUOUS THROUGH CONNECTIONS OF SIDEROADS WITH NO LEFT TURN LANES.

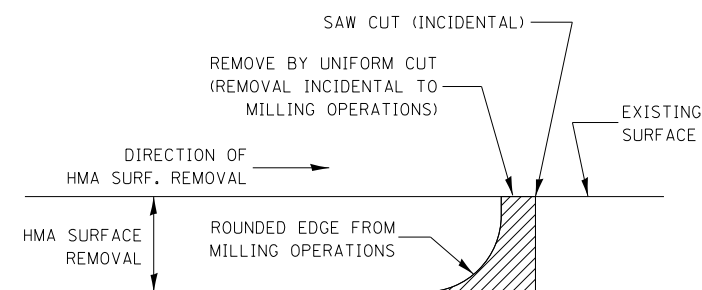
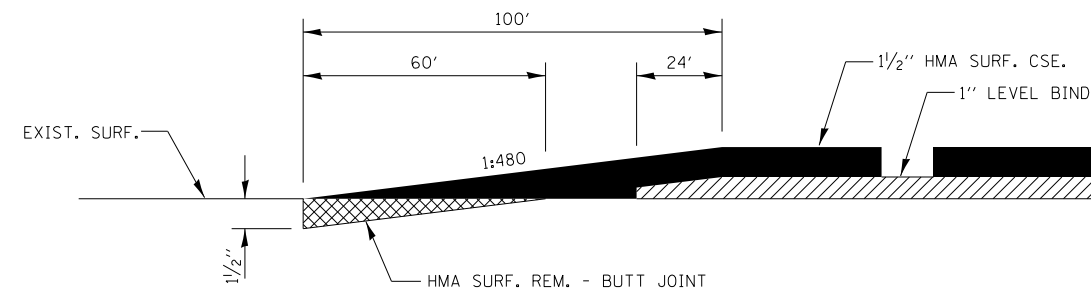
DISCONTINUE CENTERLINE RUMBLE STRIPS THROUGH THE LIMITS OF ALL LEFT TURN LANES, INCLUDING ANY LANE TAPER SECTIONS.

WHERE USED, ADJUST SPACING OF RAISED REFLECTIVE PAVEMENT MARKERS TO FALL IN WIDER GAP BETWEEN RUMBLE STRIPS.

CENTERLINE RUMBLE STRIPS SHALL BE PLACED AT LOCATIONS SHOWN ON THE PLANS.



PAVEMENT MARKING



NOTE:

WHEN MILLING OPERATIONS PRODUCE A ROUNDED EDGE, THEN A SAW CUT SHALL BE USED TO MANUFACTURE A PERPENDICULAR EDGE AS SHOWN IN THE DETAIL. THE ENGINEER SHALL BE THE SOLE JUDGE CONCERNING THE USE OF THIS DETAIL.

HMA DETAIL AT BUTT JOINTS

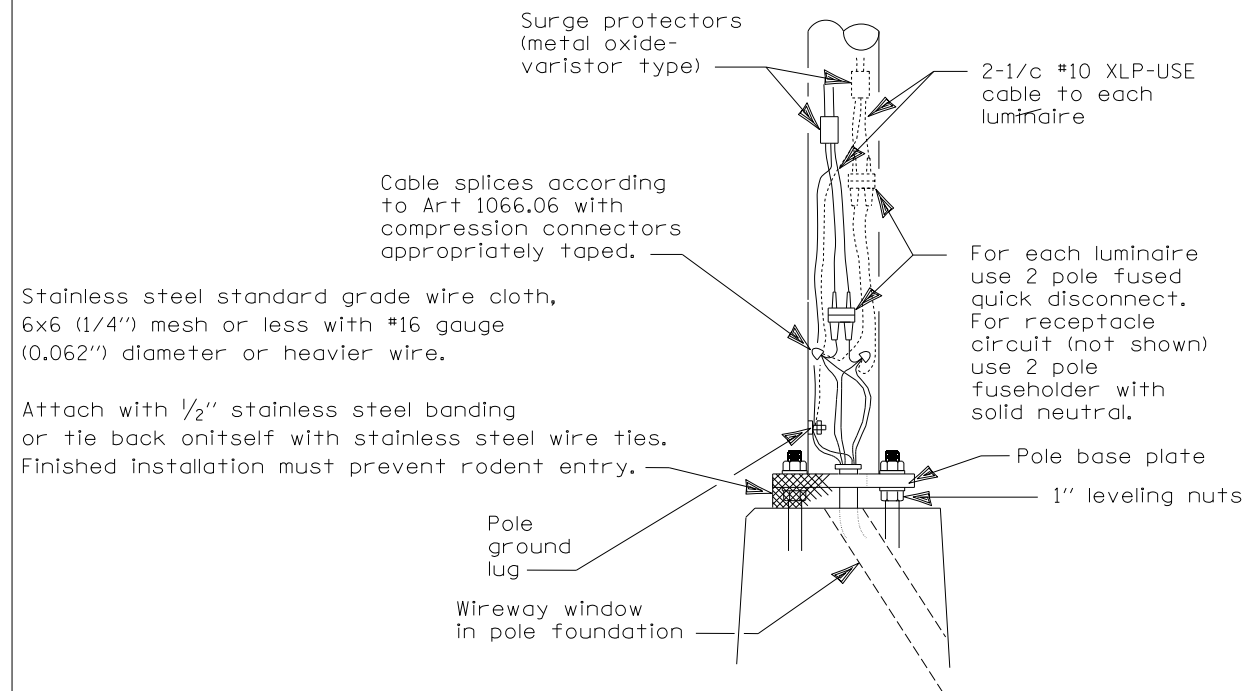
FILE NAME =	USER NAME = pletschr	DESIGNED -	REVISED -
ci:\pw\work\p\dot\pletschr\d0300202\0306C14-sht-plnprf.dgn		DRAWN -	REVISED -
Default	PLOT SCALE = 100.0000' / in.	CHECKED -	REVISED -
	PLOT DATE = 10/26/2012	DATE -	REVISED -

STATE OF ILLINOIS
DEPARTMENT OF TRANSPORTATION

RUMBLE STRIP DETAILS

SCALE: SHEET OF SHEETS STA. TO STA.

F.A.P. RTE.	SECTION	COUNTY	TOTAL SHEETS	SHEET NO.
332	(6, K-15d)L,I	KANKAKEE	30	16
			CONTRACT NO. 66C14	
ILLINOIS FED. AID PROJECT				



WIRING DETAIL

NO SCALE

GENERAL NOTES

All taped splices shall use 2 layers of electrical tape over 3 layers of rubber tape as required by the Standard Specifications. Coat the finished taped splice with bonding compound.

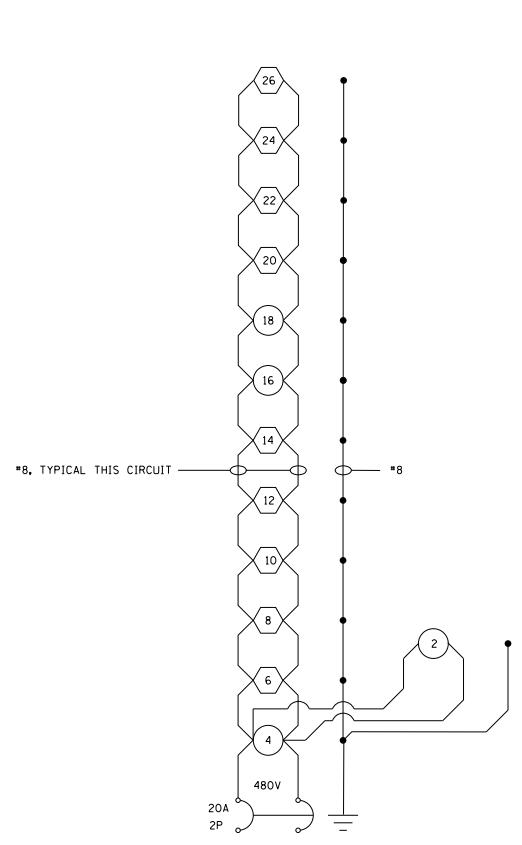
All cable splices shall be taped unless another method has been specifically approved by the Engineer.

For example purposes the pole is shown on an anchor base. If the pole is required to be set on a breakaway base, consult the Standard Specifications.

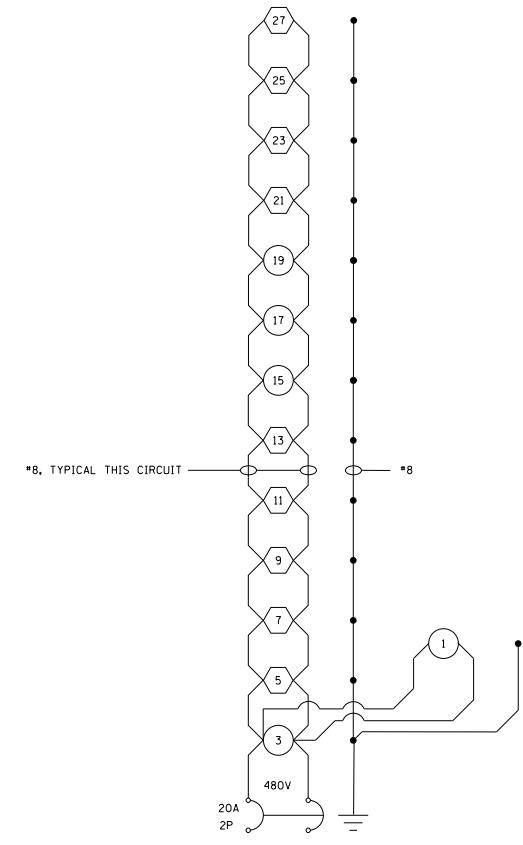
ALL DIMENSIONS ARE IN MILLIMETERS (INCHES) UNLESS OTHERWISE SHOWN.

- NOTES:
- ALL NECESSARY REVISIONS TO THE WIRING SHOWN ON THIS SHEET SHALL BE MADE AT NO ADDITIONAL COST TO THE DEPARTMENT AND TO THE SATISFACTION OF THE ENGINEER.

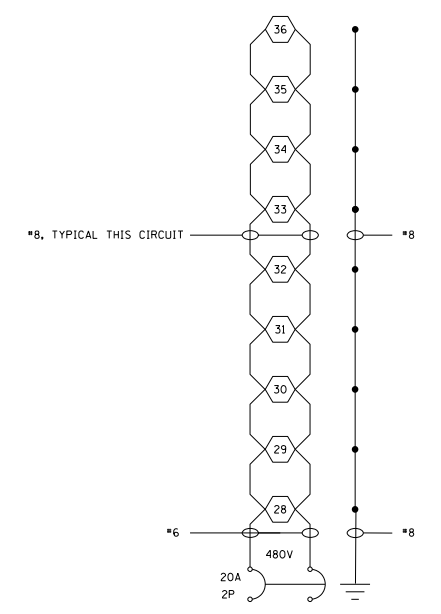
- PROPOSED 400W ROADWAY LUMINAIRE
- ◡ PROPOSED 250W ROADWAY LUMINAIRE



PROPOSED LIGHTING CKT 1
PROPOSED LIGHTING CONTROLLER

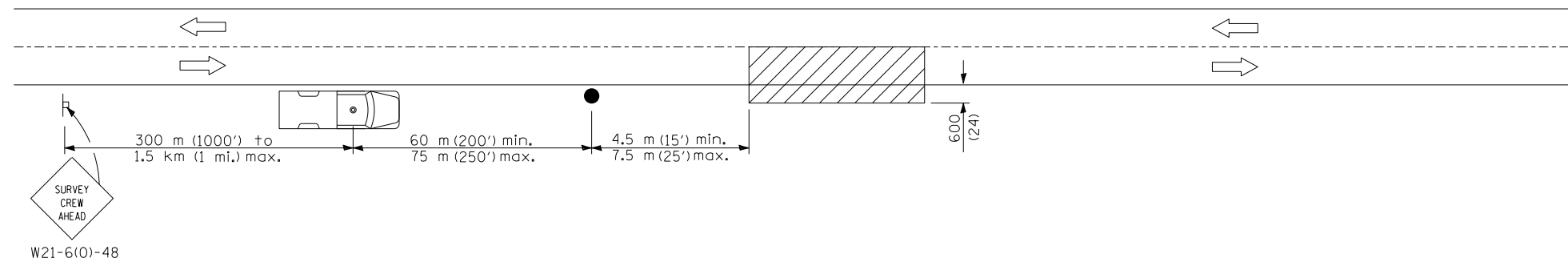


PROPOSED LIGHTING CKT 2
PROPOSED LIGHTING CONTROLLER



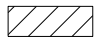

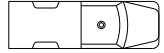

PROPOSED LIGHTING CKT 3
PROPOSED LIGHTING CONTROLLER

FILE NAME =	USER NAME = pletschr	DESIGNED -	REVISED -	STATE OF ILLINOIS DEPARTMENT OF TRANSPORTATION	WIRING DETAILS				F.A.P. RTE.	SECTION	COUNTY	TOTAL SHEETS	SHEET NO.			
Default	ct:\pw\work\p\dot\pletschr\d0300202\036C14-sht-plnprf.dgn	DRAWN -	REVISED -		SCALE:	SHEET	OF	SHEETS	STA.	TO	STA.	332	(6, K-15d)L,I	KANKAKEE	30	17
	PLOT SCALE = 100.0000' / in.	CHECKED -	REVISED -						CONTRACT NO. 66C14							
	PLOT DATE = 10/26/2012	DATE -	REVISED -						ILLINOIS FED. AID PROJECT							



TYPICAL APPLICATIONS
Utility operations

SYMBOLS

-  Work area
-  Sign on portable or permanent support
-  Truck with flashing amber light and dual emergency flashers
-  Flagger with traffic control sign

All dimensions are in millimeters (inches) unless otherwise shown.

DATE	REVISIONS

DETAIL FOR NIGHTTIME LIGHTING INSPECTION

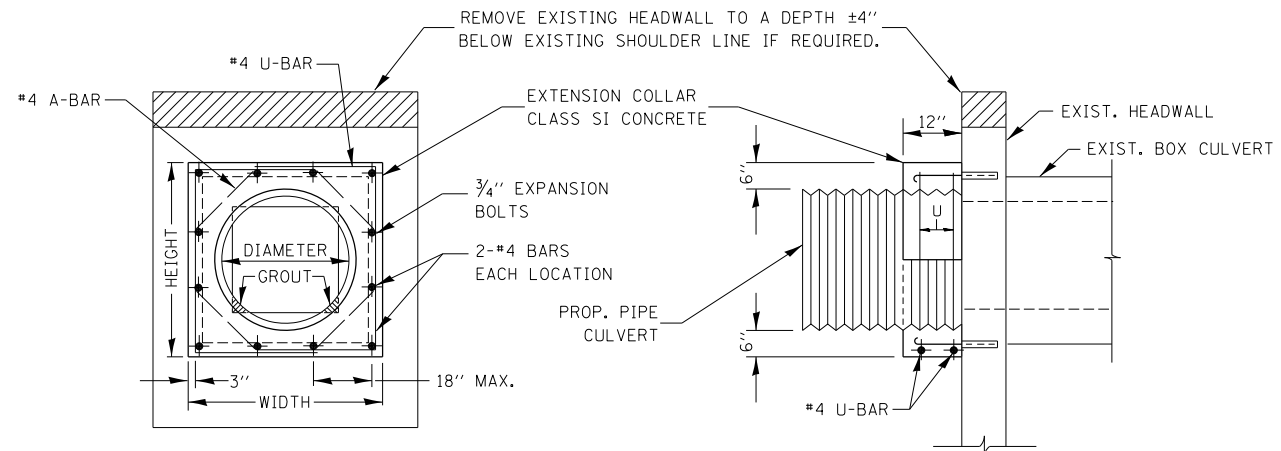
LGTO17.M32

FILE NAME =	USER NAME = pletschr	DESIGNED -	REVISED -
ct:\pw\work\p1dot\pletschr\d0300202\0366C14-sh1-plnprf.dgn		DRAWN -	REVISED -
Default	PLOT SCALE = 100.0000' / in.	CHECKED -	REVISED -
	PLOT DATE = 10/26/2012	DATE -	REVISED -

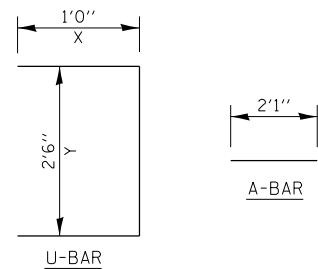
STATE OF ILLINOIS
DEPARTMENT OF TRANSPORTATION

DETAIL FOR NIGHT INSPECTION			
IL 1 & 17			
SCALE:	SHEET	OF SHEETS	STA. TO STA.

F.A.P. RTE.	SECTION	COUNTY	TOTAL SHEETS	SHEET NO.
332	6, K-15d/L,I	KANKAKEE	30	18
CONTRACT NO. 66C14				
ILLINOIS FED. AID PROJECT				



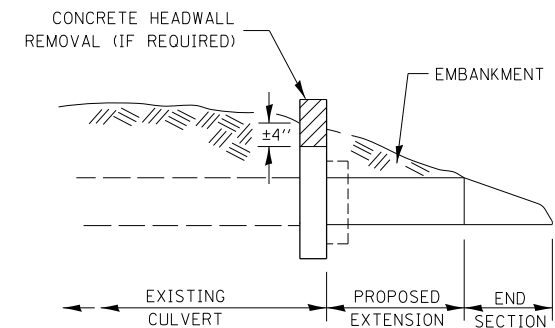
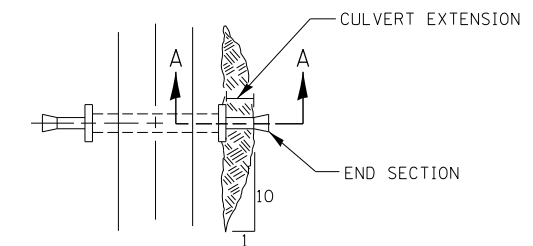
EXPANSION BOLTS SHALL CONSIST OF SELF DRILLING EXPANSION SHIELDS AND 3/4" DIA. HOOKED BOLTS. HOOKED BOLTS SHALL EXTEND A MINIMUM OF 9" INTO NEW CONCRETE. BOLTS SHALL BE DRILLED IN THE CENTER OF THE EXISTING BOX CULVERT BARREL WALLS. MINIMUM CERTIFIED PROOF LOAD = 4,080 LBS.



LOCATION	EXISTING CULVERT SIZE	PIPE DIMENSION	PIPE AREA	EXTENSION COLLAR		A-BAR		U-BAR		CLASS SI CONC. COLLAR	REINFORCEMENT BARS	3/4" DIA. EXPANSION BOLTS
				WIDTH	HEIGHT	305	'X'	'Y'	CU. YD.			
317+76 RT	3'x3'	24"	3.14	36"	36"	25"	12"	30"	.33	18	8	

QUANTITIES ARE FOR ONE SIDE ONLY

COLLAR DETAIL (CMP EXTENSION OF PIPE CULVERT)



SECTION A-A

PLAN AT PIPE EXTENSIONS

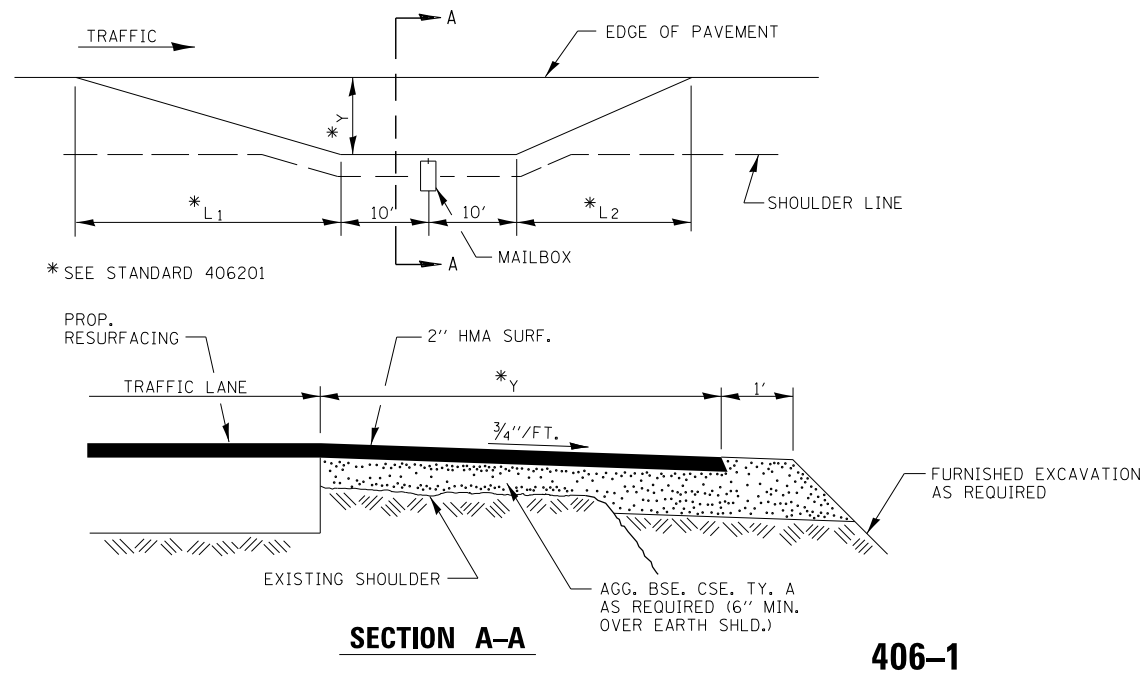
FILE NAME =	USER NAME = pletschr	DESIGNED -	REVISED -
ct:\pw\work\p1dot\pletschr\d0300202\0366C14-sht-plnprf.dgn		DRAWN -	REVISED -
Default	PLOT SCALE = 100.0000' / in.	CHECKED -	REVISED -
	PLOT DATE = 10/26/2012	DATE -	REVISED -

STATE OF ILLINOIS
DEPARTMENT OF TRANSPORTATION

PIPE CULVERT EXTENSION DETAILS

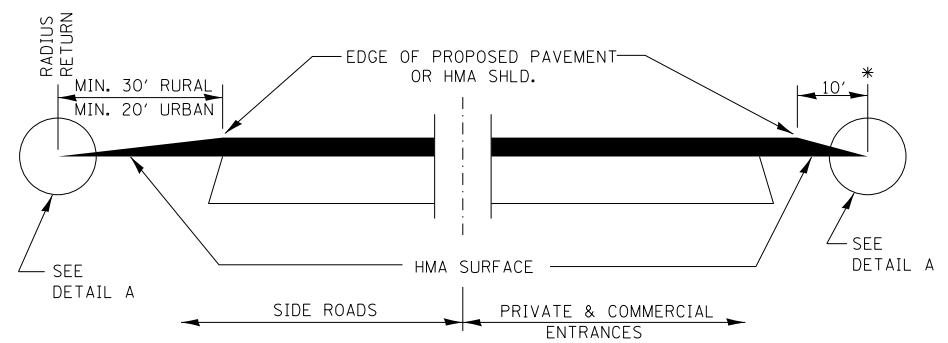
SCALE: SHEET OF SHEETS STA. TO STA.

F.A.P. RTE.	SECTION	COUNTY	TOTAL SHEETS	SHEET NO.
332	(6, K-15d)LI	KANKAKEE	30	19
CONTRACT NO. 66C14			ILLINOIS FED. AID PROJECT	

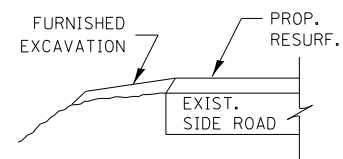


RURAL MAILBOX TURNOUT DETAILS

406-1

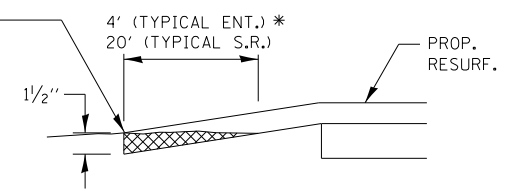


**SECTION A-A
DETAILS AT ENTRANCES & SIDE ROADS**

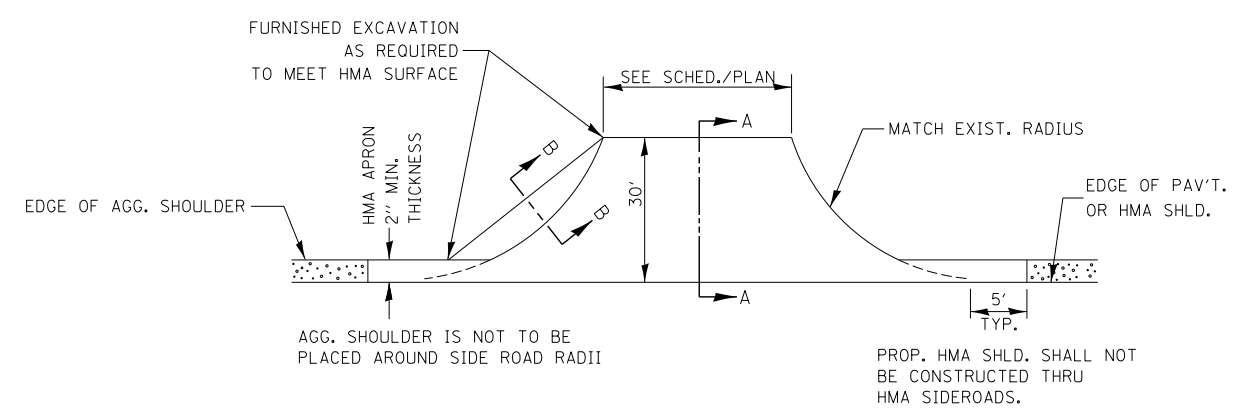


SECTION B-B

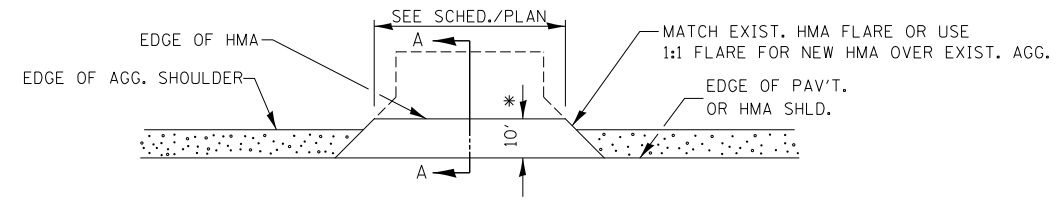
THE COST OF REMOVAL AT EXISTING HMA OR P.C.C. LOCATIONS SHALL BE PAID FOR PER SQ. YD. BY THE APPROPRIATE PAY ITEM. REMOVAL AT THE EXISTING AGG. LOCATIONS SHALL BE INCIDENTAL TO THE HMA. A-3 LOCATIONS SHALL BE FEATHER TAPERED.



DETAIL A



PLAN AT SIDE ROADS



PLAN AT PRIVATE & COMMERCIAL ENTRANCES

(DO NOT RESURFACE FIELD ENTRANCES)

* PROPOSED HMA RESURFACING AT PUBLIC EDUCATIONAL FACILITY ENTRANCES SHALL BE EXTENDED TO THE RIGHT-OF-WAY LIMITS.

FILE NAME =	USER NAME = pletschr	DESIGNED -	REVISED -
ci:\pw\work\p\dot\pletschr\0300202\0306C14-shd-plnprf.dgn		DRAWN -	REVISED -
Default	PLOT SCALE = 100.0000' / in.	CHECKED -	REVISED -
	PLOT DATE = 10/26/2012	DATE -	REVISED -

**STATE OF ILLINOIS
DEPARTMENT OF TRANSPORTATION**

SCALE:	SHEET	OF	SHEETS	STA.	TO	STA.
--------	-------	----	--------	------	----	------

F.A.P. RTE.	SECTION	COUNTY	TOTAL SHEETS	SHEET NO.
332	(6, K-15d)L,I	KANKAKEE	30	20
ILLINOIS FED. AID PROJECT			CONTRACT NO. 66C14	

GENERAL NOTES

1. ALL PROPOSED LIGHTING UNITS SHALL BE LABELED ACCORDING TO THE STANDARD SPECIFICATIONS AND THE PLANS, WITH POLE NUMBERS ATTACHED WITH STAINLESS STEEL BANDING. LIGHTING UNIT NUMBERING SHALL BE AS DIRECTED BY THE ENGINEER.

2. CONTRACTOR SHALL BE RESPONSIBLE TO COORDINATE ELECTRICAL WORK WITH OTHER TRADES.

3. LIGHT POLE FOUNDATIONS SHALL BE INSTALLED PLUMB AND FLUSH WITH THE PROPOSED GRADE AND SHALL MEET THE HEIGHT REQUIREMENTS OF ARTICLE 836.03 OF THE STANDARD SPECIFICATIONS. AFTER UNIT DUCT IS INSTALLED, FOUNDATIONS SHALL BE FILLED WITH FINE AGGREGATE ACCORDING TO ARTICLE 836.03. WASHERS USED TO INSTALL THE POLE SHALL BE LARGE ENOUGH TO FULLY COVER THE SLOTTED HOLES IN THE POLE BASE PLATE. THE VOIDS ON THE BOTTOM SIDE OF THE ALUMINUM POLE BASE MUST BE SEALED FROM RODENT ENTRY WITH STAINLESS STEEL SCREEN.

4. CONTRACTOR SHALL INSTALL LIGHT POLES AT THE LOCATIONS INDICATED ON THE PLANS, MAINTAINING ADEQUATE CLEARANCE FROM UTILITY LINES. CONTRACTOR SHALL BE RESPONSIBLE TO VERIFY CLEARANCES PER THE NATIONAL ELECTRICAL SAFETY CODE AND/OR THE REQUIREMENTS OF THE UTILITY COMPANIES. THE CONTRACTOR SHALL NOTIFY THE ENGINEER OF ALL CONFLICTS BETWEEN PROPOSED LIGHTING POLE LOCATIONS AND UTILITY LINES. THE LOCATION OF BURIED AND ABOVE GROUND UTILITIES SHOWN ARE APPROXIMATE AND ARE SHOWN FOR INFORMATION ONLY. REROUTING, DISCONNECTION, RELOCATION, PROTECTION ETC., OF ANY UTILITIES MUST BE COORDINATED BETWEEN THE CONTRACTOR, UTILITY COMPANY, AND OWNER. THE CONTRACTOR SHALL VERIFY THE EXACT LOCATION OF ALL UNDERGROUND UTILITIES PRIOR TO CONSTRUCTION.

5. THE CONTRACTOR IS RESPONSIBLE FOR UNCOVERING OR HAND DIGGING AROUND UTILITIES AS NECESSARY. THE COST OF THIS WORK IS TO BE INCLUDED WITH THE APPLICABLE UNDERGROUND CONDUIT OR UNIT DUCT PAY ITEM.

6. INSTALL HORIZONTAL MOUNT LUMINAIRES PERPENDICULAR TO THE CENTERLINE OF THE ROADWAY AS REQUIRED BY ARTICLE 821.04 OF THE STANDARD SPECIFICATIONS.

7. UNDERGROUND CONDUIT, COILABLE NONMETALLIC CONDUIT SHALL BE SCHEDULE 80 AS NOTED IN THE PLANS.

8. EXISTING LIGHTING FACILITIES SHALL REMAIN OPERATIONAL THROUGHOUT CONSTRUCTION UNTIL THE PROPOSED LIGHTING SYSTEM IS INSTALLED AND MADE FULLY OPERATIONAL.

FILE NAME =	USER NAME = pletschr	DESIGNED -	REVISED -	STATE OF ILLINOIS DEPARTMENT OF TRANSPORTATION	LIGHTING GENERAL NOTES				F.A.P. RTE.	SECTION	COUNTY	TOTAL SHEETS	SHEET NO.
c:\pwork\pwork\pletschr\d0300202\0366C14-shr-plnprf.dgn		DRAWN -	REVISED -						332	6, K-15dL,I	KANKAKEE	30	21
Default	PLOT SCALE = 100.0000' / in.	CHECKED -	REVISED -		CONTRACT NO. 66C14				ILLINOIS FED. AID PROJECT				
	PLOT DATE = 10/26/2012	DATE -	REVISED -		SCALE:	SHEET	OF	SHEETS	STA.	TO STA.			

ILLINOIS DEPARTMENT OF TRANSPORTATION
250W LUMINAIRE PERFORMANCE TABLE

1/1/03

GIVEN CONDITIONS

ROADWAY DATA:	Pavement Width	24 FT
	Number Of Lanes <i>(in direction of travel)</i>	2
	Median Width	N/A
	IES Surface Classification	R3
	Q-Zero Value	.07
LIGHT POLE DATA:	Mounting Height	45 FT
	Mast Arm Length	15 FT
	Pole Set-Back From Edge Of Pavement	15 FT
LUMINAIRE DATA:	Lamp Type	HPS
	Lamp Lumens	28,500
	IES Vertical Distribution	M
	IES Control Of Distribution	FC
	IES Lateral Distribution	3
	Total Light Loss Factor	0.684
LAYOUT DATA:	Spacing	160 FT
	Configuration	Single Sided
	Luminaire Overhang Over Edge Of Pavement Lane	0 FT

NOTE: Variations from the above specified IES distribution pattern may be requested and acceptance of variations will be subject to review by the Engineer based on how well the performance requirements are met.

PERFORMANCE REQUIREMENTS

NOTE: These performance requirements shall be the minimum acceptable standards of photometric performance for the luminaire, based on the given conditions listed above.

ILLUMINATION:	Average Horizontal Illumination, (E_{AVE})	0.9 fc
	Uniformity Ratio, (E_{AVE}/E_{MIN})	3.0
LUMINANCE:	Average Luminance: (L_{AVE})	0.6 Cd/m ²
	Uniformity Ratios: (L_{AVE}/L_{MIN})	3.5
	(L_{MAX}/L_{MIN})	6.0
	Maximum Veiling Luminance Ratio: (L_v/L_{AVE})	0.30

MS:cs:s:\gen\wpdocs\cks\luminaireperformancetable

ILLINOIS DEPARTMENT OF TRANSPORTATION
400W LUMINAIRE PERFORMANCE TABLE

1/1/03

GIVEN CONDITIONS

ROADWAY DATA:	Pavement Width	24 FT
	Number Of Lanes	2
	Median Width	25 FT
	IES Surface Classification	R3
	Q-Zero Value	.07
LIGHT POLE DATA:	Mounting Height	50 FT
	Mast Arm Length	15 FT
	Pole Set-Back From Edge Of Pavement	15 FT
LUMINAIRE DATA:	Lamp Type	HPS
	Lamp Lumens	50,000
	IES Vertical Distribution	M
	IES Control Of Distribution	FC
	IES Lateral Distribution	3
	Total Light Loss Factor	0.684
LAYOUT DATA:	Spacing	180 FT
	Configuration	Opposite
	Luminaire Overhang Over Edge Of Pavement Lane	0 FT

NOTE: Variations from the above specified IES distribution pattern may be requested and acceptance of variations will be subject to review by the Engineer based on how well the performance requirements are met.

PERFORMANCE REQUIREMENTS

NOTE: These performance requirements shall be the minimum acceptable standards of photometric performance for the luminaire, based on the given conditions listed above.

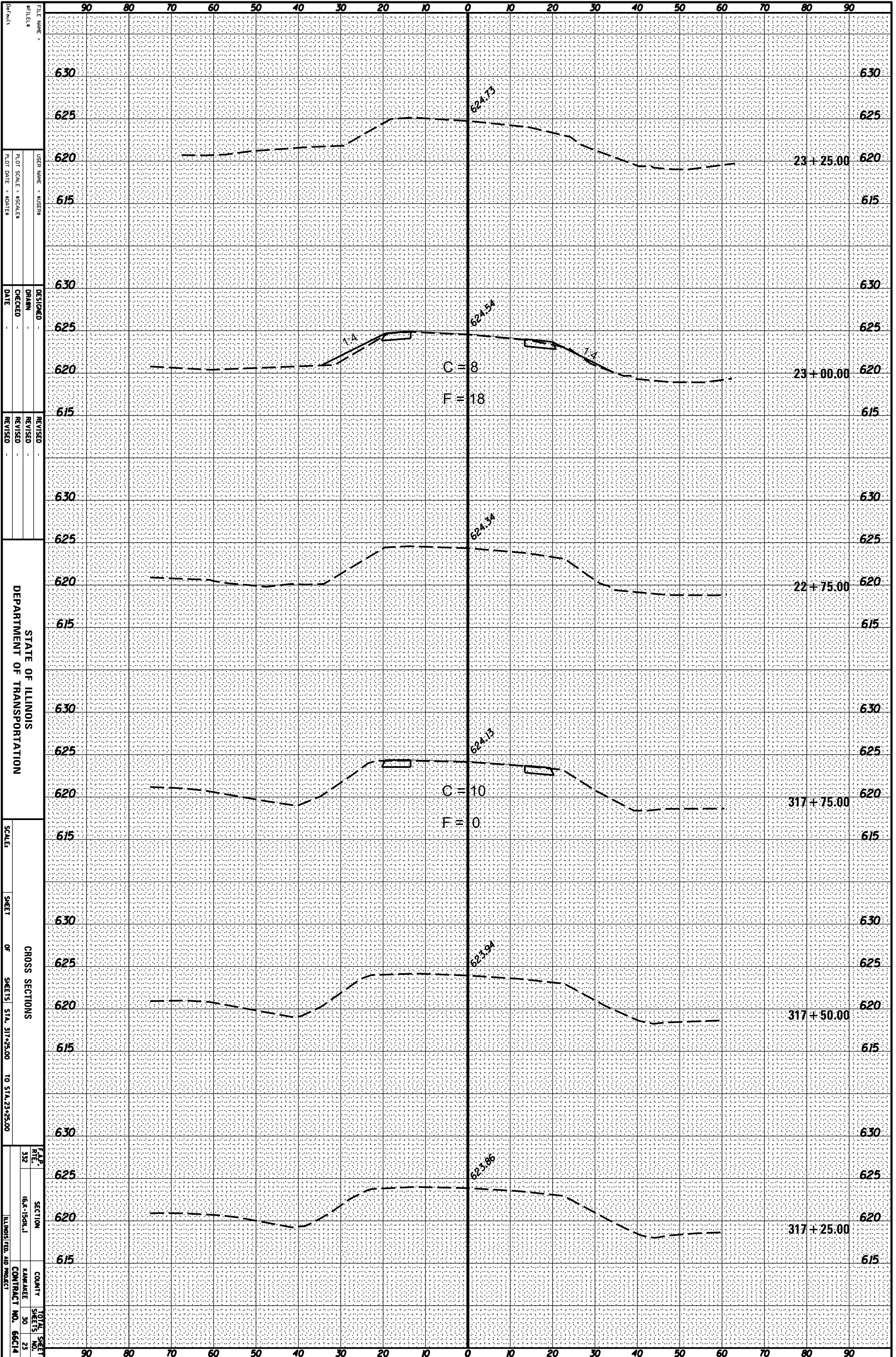
ILLUMINATION:	Average Horizontal Illumination, (E_{AVE})	1.8 fc
	Uniformity Ratio, (E_{AVE}/E_{MIN})	3.0
LUMINANCE:	Average Luminance: (L_{AVE})	0.9 Cd/m ²
	Uniformity Ratios: (L_{AVE}/L_{MIN})	3.5
	(L_{MAX}/L_{MIN})	6.0
	Maximum Veiling Luminance Ratio: (L_v/L_{AVE})	0.30

MS:cs:s:\gen\wpdocs\cks\luminaireperformancetable

Rev.

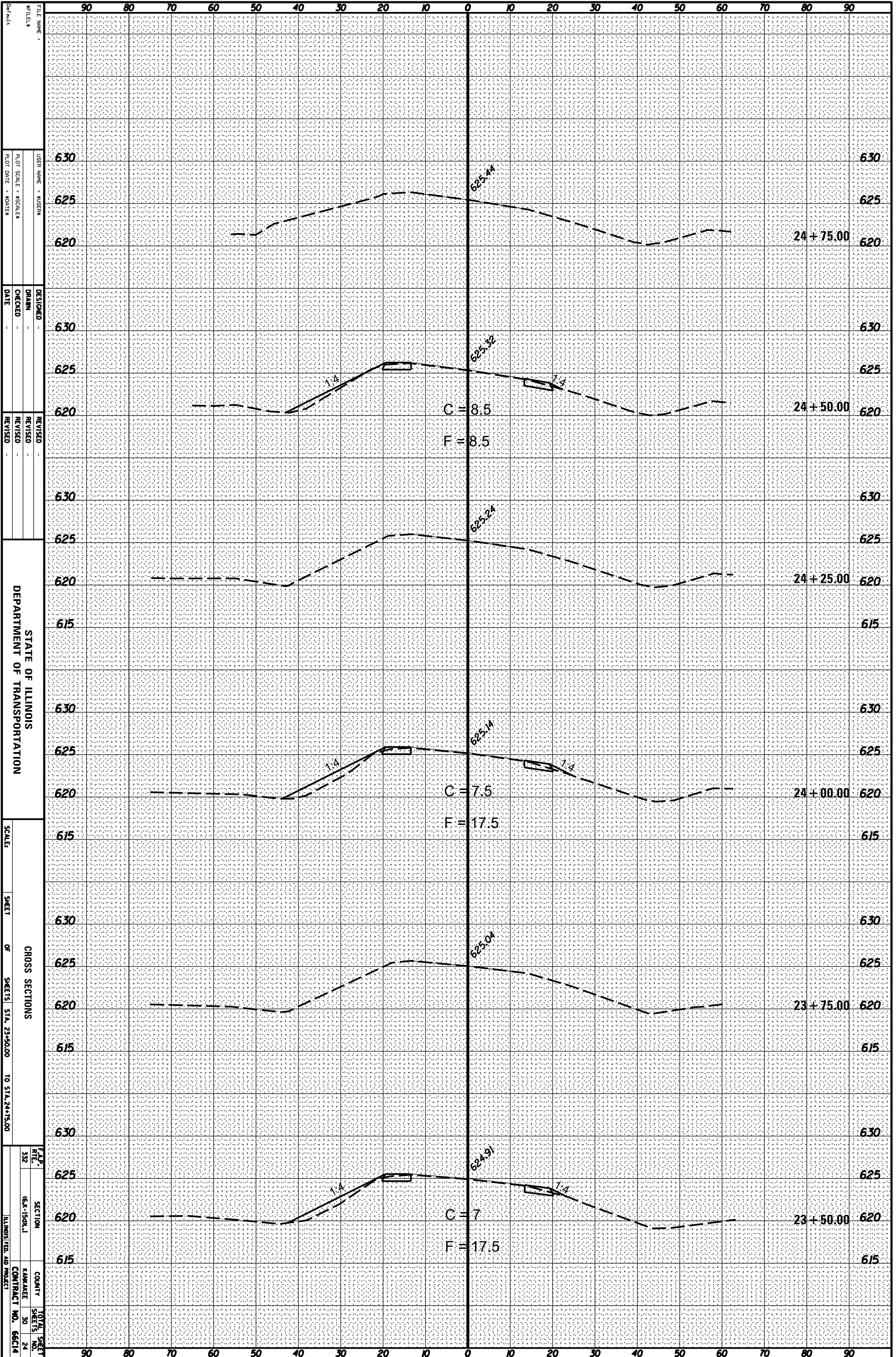
ORIGINAL SURVEY	SURVEYED _____	BY _____	DATE _____
NOTE BOOK	PLOTTED _____		
	TEMPLATE _____		
	AREAS _____		
	AREAS CHECKED _____		

FINAL SURVEY	SURVEYED _____	BY _____	DATE _____
NOTE BOOK	PLOTTED _____		
	TEMPLATE _____		
	AREAS _____		
	AREAS CHECKED _____		



ORIGINAL SURVEY	SURVEYED _____	BY _____	DATE _____
NOTE BOOK	PLOTTED _____		
	TEMPLATE _____		
	AREAS _____		
	AREAS CHECKED _____		

FINAL SURVEY	SURVEYED _____	BY _____	DATE _____
NOTE BOOK	PLOTTED _____		
	TEMPLATE _____		
	AREAS _____		
	AREAS CHECKED _____		



FILE NAME: _____
 USER NAME: SUSENS
 DESIGNER: DRANN
 CHECKED: _____
 DATE: _____
 REVISIONS: _____
 REVISIONS: _____
 REVISIONS: _____

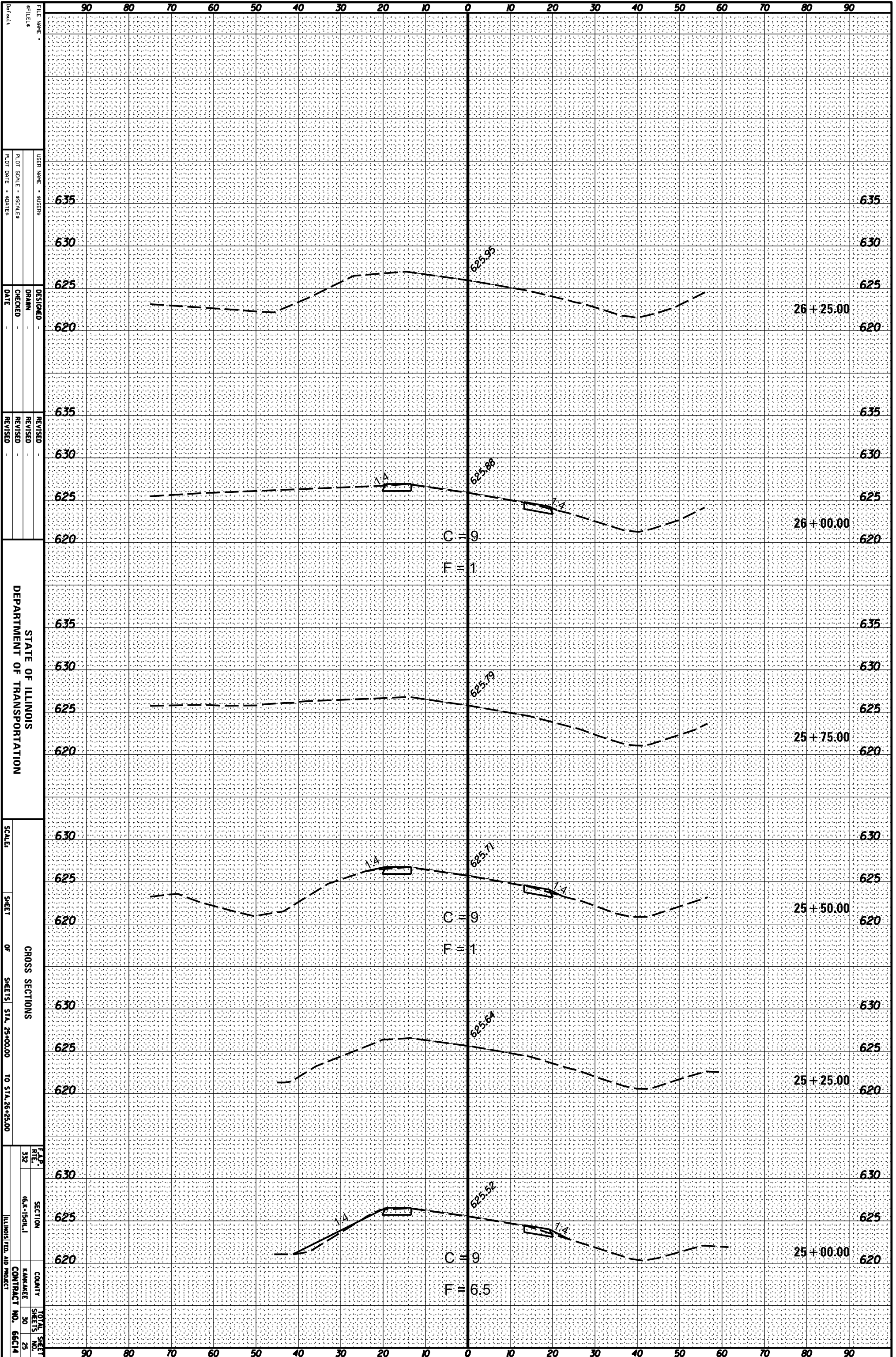
STATE OF ILLINOIS
 DEPARTMENT OF TRANSPORTATION

CROSS SECTIONS
 SCALE: _____
 SHEET _____ OF _____ SHEETS STA. 23+50.00 TO STA. 24+75.00

F.A.P. 332
 SECTION 16A-150L.I
 COUNTY HANNAH
 TOTAL SHEET NO. 24
 CONTRACT NO. 66C14
 ILLINOIS FED. AID PROJECT

ORIGINAL SURVEY	SURVEYED _____	BY _____	DATE _____
NOTE BOOK	PLOTTED _____		
	TEMPLATE _____		
	AREAS _____		
	AREAS CHECKED _____		

FINAL SURVEY	SURVEYED _____	BY _____	DATE _____
NOTE BOOK	PLOTTED _____		
	TEMPLATE _____		
	AREAS _____		
	AREAS CHECKED _____		



FILE NAME: _____
 USER NAME: SUSERS
 PLOT SCALE: 80 FEET
 PLOT DATE: 8/20/15

DESIGNED: _____
 DRAWN: _____
 CHECKED: _____
 DATE: _____

REVISIONS:
 REVISION NO. _____
 REVISION DATE _____

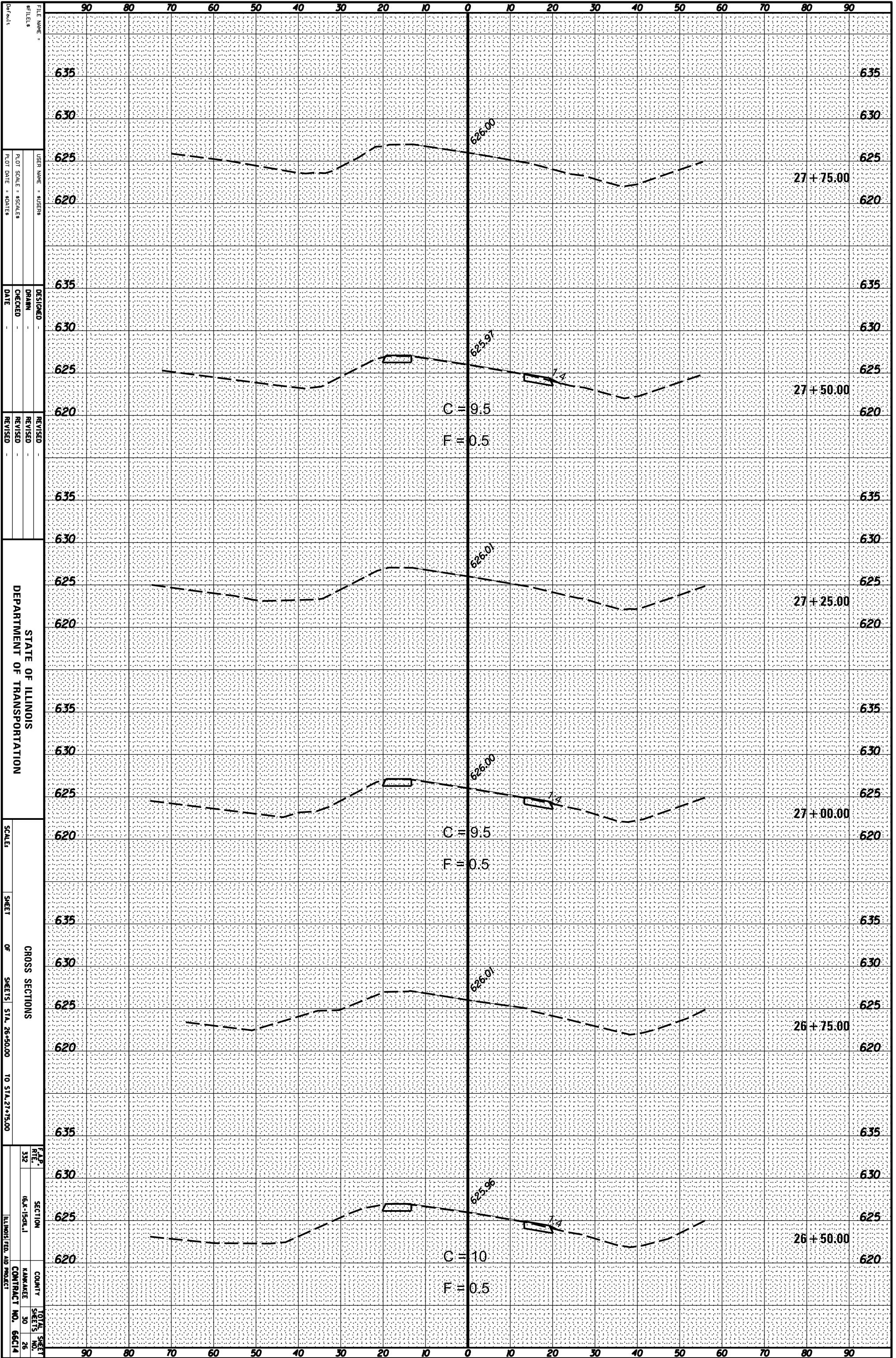
STATE OF ILLINOIS
 DEPARTMENT OF TRANSPORTATION

CROSS SECTIONS
 OF SHEETS STA. 25+00.00 TO STA. 26+25.00

F.A.P. RITE SECTION COUNTY TOTAL SHEET NO. 332 (6x15) ILLINOIS FED. AID PROJECT CONTRACT NO. 66C14

ORIGINAL SURVEY	SURVEYED	BY	DATE
NOTE BOOK	PLOTTED		
	TEMPLATE		
	AREAS		
	AREAS CHECKED		

FINAL SURVEY	SURVEYED	BY	DATE
NOTE BOOK	PLOTTED		
	TEMPLATE		
	AREAS		
	AREAS CHECKED		



FILE NAME: _____
 #FILES: _____
 USER NAME: SUSENS
 PLOT SCALE: 80000
 PLOT DATE: 8/20/15

DESIGNED: _____
 DRAWN: _____
 CHECKED: _____
 DATE: _____

REVISOR: _____
 REVISION: _____
 REVISION: _____
 REVISION: _____

STATE OF ILLINOIS
 DEPARTMENT OF TRANSPORTATION

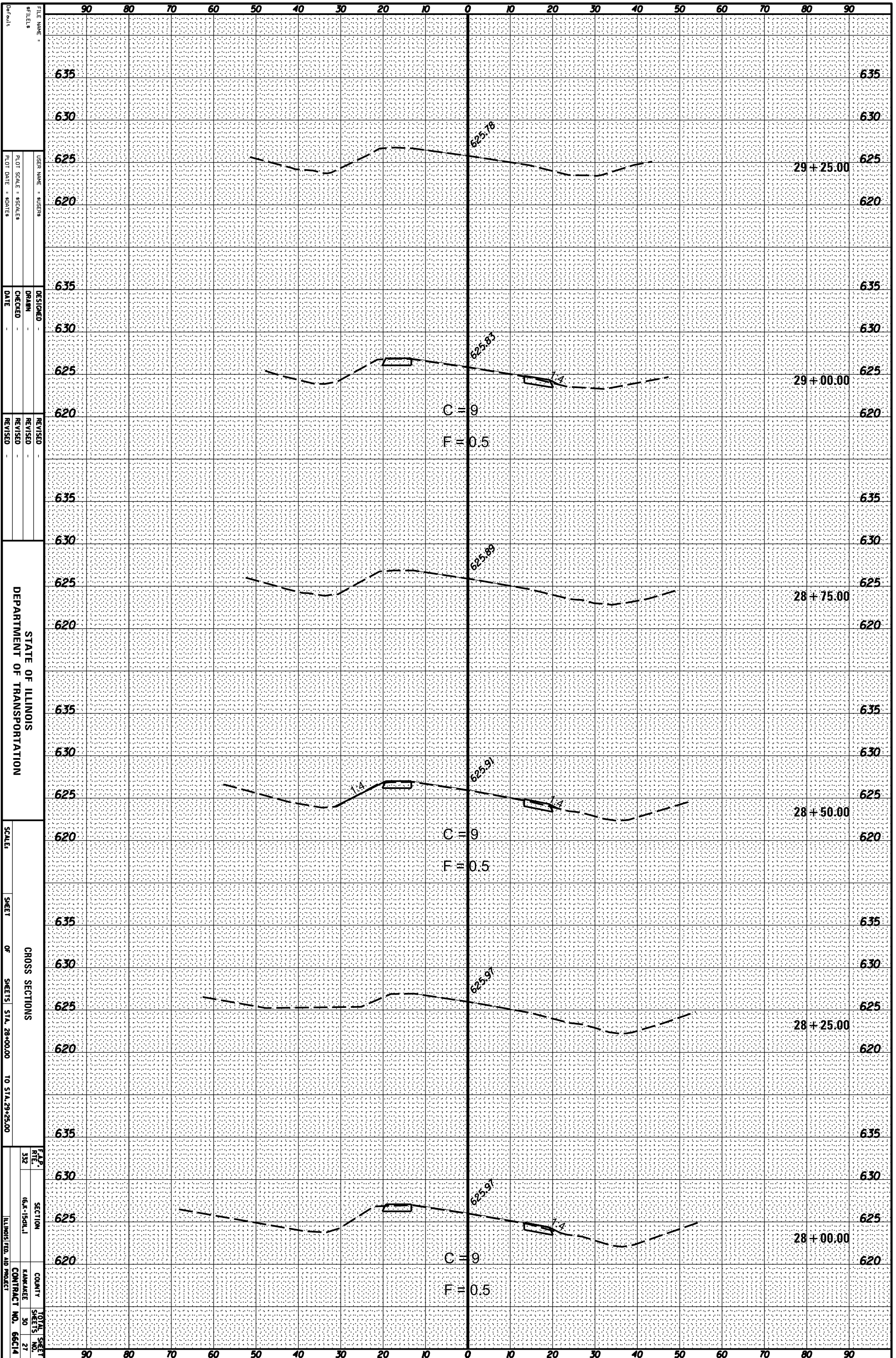
SCALE: _____
 SHEET _____ OF _____ SHEETS STA. 26+50.00 TO STA. 27+75.00

CROSS SECTIONS

F.A.P. RITE 332 SECTION 16A-150L.I COUNTY HANNAH COUNTY TOTAL SHEET NO. 30 SHEET NO. 26 ILLINOIS FED. AID PROJECT CONTRACT NO. 66C14

ORIGINAL SURVEY	SURVEYED _____	BY _____	DATE _____
NOTE BOOK	PLOTTED _____		
	TEMPLATE _____		
	AREAS _____		
	AREAS CHECKED _____		

FINAL SURVEY	SURVEYED _____	BY _____	DATE _____
NOTE BOOK	PLOTTED _____		
	TEMPLATE _____		
	AREAS _____		
	AREAS CHECKED _____		



FILE NAME: _____
 #FILES: _____
 USER NAME: SUSENS
 PLOT SCALE: 80FEET
 PLOT DATE: 8/20/15

DESIGNED: _____
 DRAWN: _____
 CHECKED: _____
 DATE: _____

REVISOR: _____
 REVISION: _____
 REVISION: _____
 REVISION: _____

STATE OF ILLINOIS
 DEPARTMENT OF TRANSPORTATION

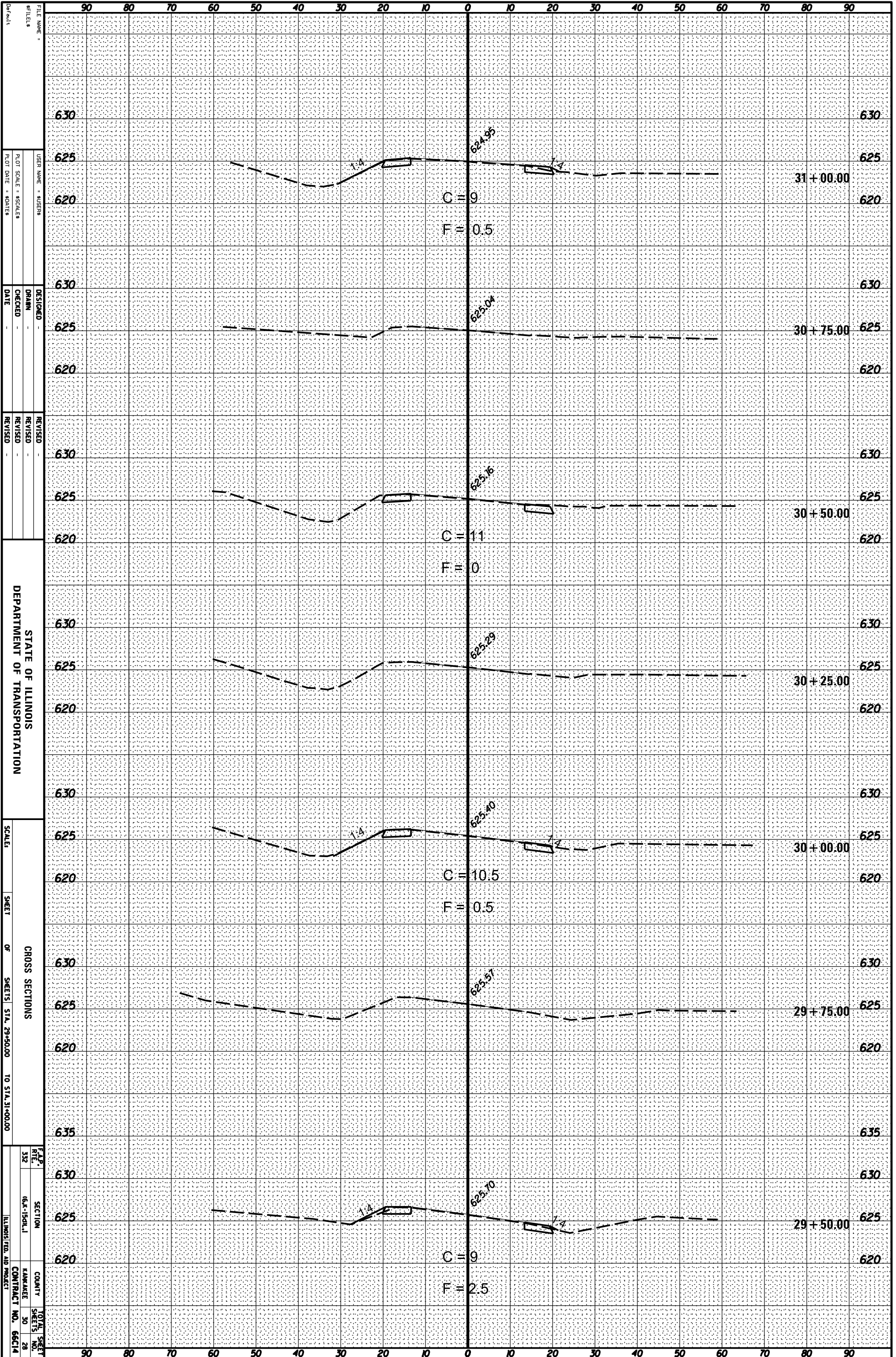
SCALE: _____
 SHEET _____ OF _____ SHEETS
 STA. 28+00.00 TO STA. 29+25.00

CROSS SECTIONS

F.A.P. RITE: 332
 SECTION: 6A-150L1
 COUNTY: HANNAH
 TOTAL SHEET NO.: 27
 CONTRACT NO.: 66C14
 ILLINOIS FED. AID PROJECT

ORIGINAL SURVEY	SURVEYED _____	BY _____	DATE _____
NOTE BOOK	PLOTTED _____		
	TEMPLATE _____		
	AREAS _____		
	AREAS CHECKED _____		

FINAL SURVEY	SURVEYED _____	BY _____	DATE _____
NOTE BOOK	PLOTTED _____		
	TEMPLATE _____		
	AREAS _____		
	AREAS CHECKED _____		



FILE NAME: _____
 USER NAME: 805888
 PLOT SCALE: 80/1000
 PLOT DATE: 8/20/15

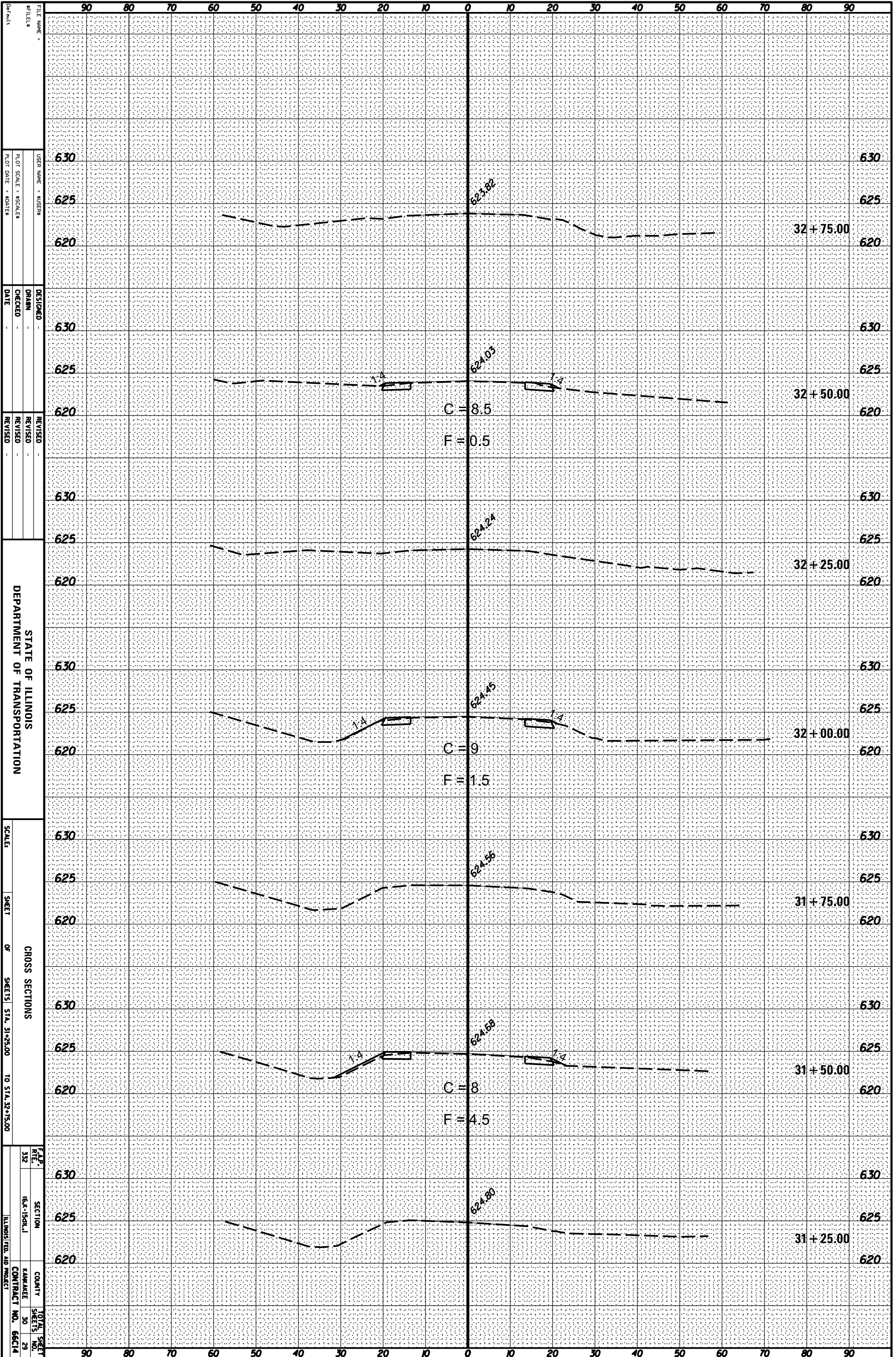
DESIGNED: _____
 DRAWN: _____
 CHECKED: _____
 DATE: _____

REVISIONS:
 1. _____
 2. _____
 3. _____

STATE OF ILLINOIS
 DEPARTMENT OF TRANSPORTATION
 CROSS SECTIONS
 SHEET OF SHEETS STA. 29+50.00 TO STA. 31+00.00
 F.A.P. RITE 332
 SECTION 16A-1504.1
 COUNTY HANNAH
 TOTAL SHEET NO. 28
 CONTRACT NO. 66C14
 ILLINOIS FED. AID PROJECT

ORIGINAL SURVEY	SURVEYED _____	BY _____	DATE _____
NOTE BOOK	PLOTTED _____		
	TEMPLATE _____		
	AREAS _____		
	AREAS CHECKED _____		

FINAL SURVEY	SURVEYED _____	BY _____	DATE _____
NOTE BOOK	PLOTTED _____		
	TEMPLATE _____		
	AREAS _____		
	AREAS CHECKED _____		



FILE NAME: _____
 USER NAME: SUSERS
 PLOT SCALE: 80 FEET
 PLOT DATE: 8/20/15

DESIGNED: _____
 DRAWN: _____
 CHECKED: _____
 DATE: _____

REVISOR: _____
 REVISION: _____
 REVISION: _____
 REVISION: _____

STATE OF ILLINOIS
 DEPARTMENT OF TRANSPORTATION

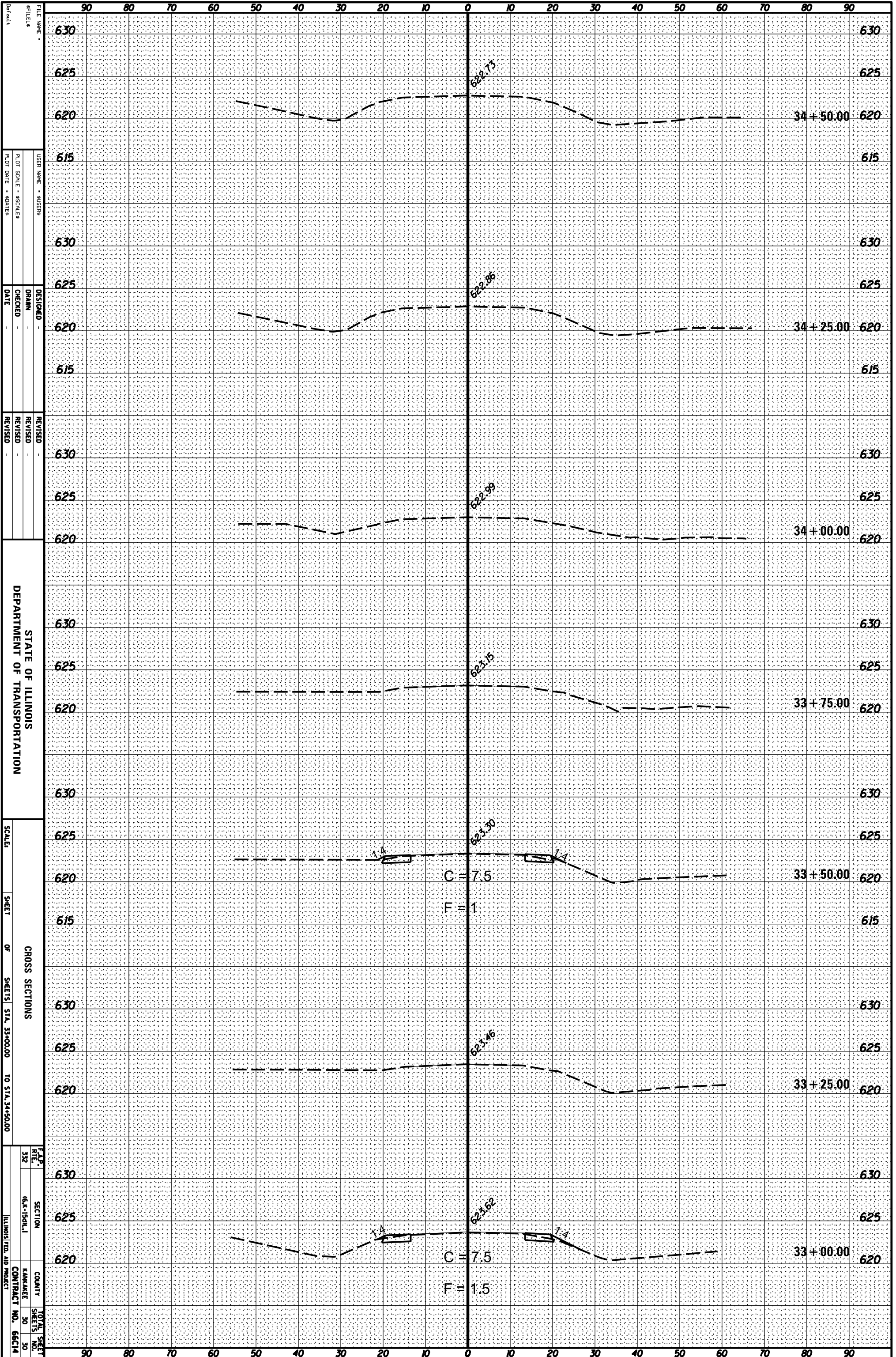
SCALE: _____
 SHEET _____ OF _____ SHEETS
 STA. 31+25.00 TO STA. 32+75.00

CROSS SECTIONS

F.A.P. RITE 332
 SECTION 16A-150A.1
 COUNTY KANKAKEE
 TOTAL SHEET NO. 29
 CONTRACT NO. 66C14
 ILLINOIS FED. AID PROJECT

ORIGINAL SURVEY	SURVEYED	BY	DATE
NOTE BOOK	PLOTTED		
	TEMPLATE		
	AREAS		
	CHECKED		

FINAL SURVEY	SURVEYED	BY	DATE
NOTE BOOK	PLOTTED		
	TEMPLATE		
	AREAS		
	CHECKED		



FILE NAME: _____
 #TILES: _____
 USER NAME: SUSENS
 PLOT SCALE: 80FEET
 PLOT DATE: 8/20/15

DESIGNED: _____
 DRAWN: _____
 CHECKED: _____
 DATE: _____

REVISOR: _____
 REVISION: _____
 REVISION: _____
 REVISION: _____

STATE OF ILLINOIS
 DEPARTMENT OF TRANSPORTATION

SCALE: _____
 SHEET _____ OF _____ SHEETS
 STA. 33+00.00 TO STA. 34+50.00

CROSS SECTIONS

F.A.P. RITE 332 SECTION 16X-150L.I
 COUNTY HANNAH
 TOTAL SHEET NO. 30
 CONTRACT NO. 66C14
 ILLINOIS FLD. AID PROJECT