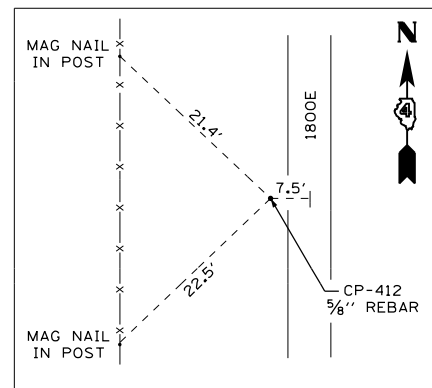


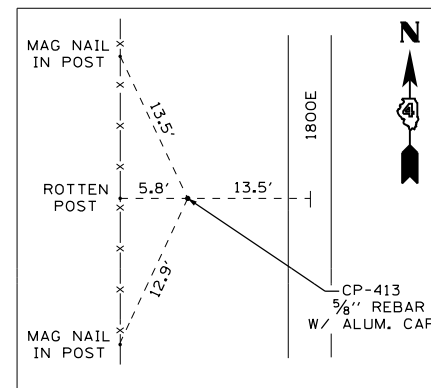
CONTROL POINT #417

N 1524496.8160, E 2108947.3770 ELEV. 666.41
 STA. 777+76.79, 324.99' LT (RTE 34)
 STA. 53+40.10, 22.21' RT (TR-150 1700E)



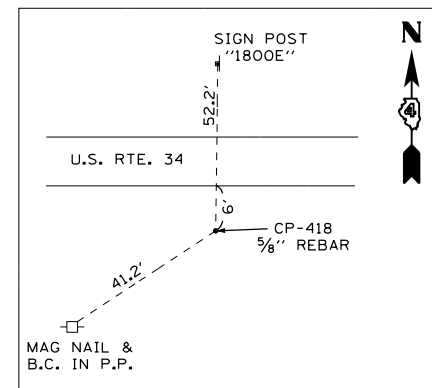
CONTROL POINT #412

N 1523919.8675, E 2108918.1400 ELEV. 674.58
 STA. 775+65.78, 212.78' RT (RTE 34)
 STA. 47+63.58, 78.14' LT (TR-178 1800E)



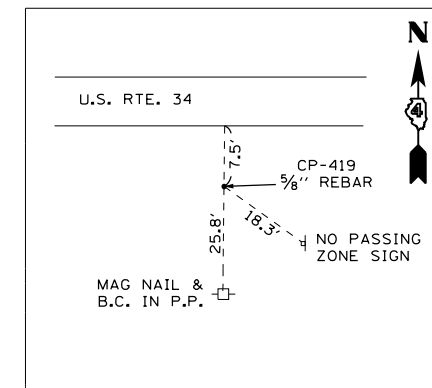
CONTROL POINT #413

N 1523294.9120, E 2108899.2750 ELEV. 685.13
 STA. 773+49.34, 799.37' RT (RTE 34)
 STA. 41+24.83, 13.30' LT (TR-138 1650E)



CONTROL POINT #418

N 1524521.5760, E 2109689.0780 ELEV. 677.85
 STA. 784+80.09, 125.46' LT (RTE 34)



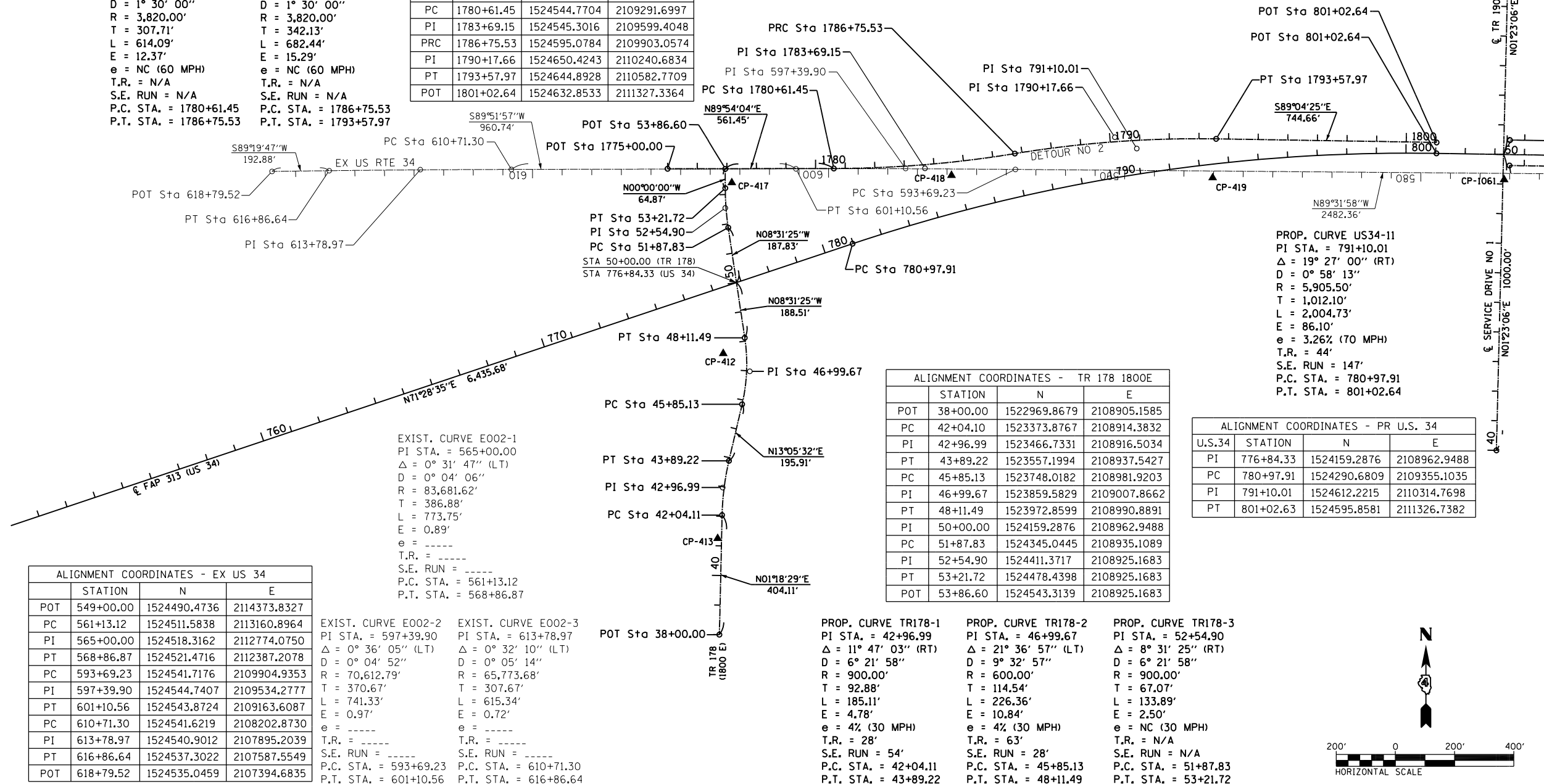
CONTROL POINT #419

N 1524513.4960, E 2110571.0170 ELEV. 683.33
 STA. 793+40.33, 45.32' RT (RTE 34)

PROP. CURVE DET2-1
 PI STA. = 1783+69.15
 $\Delta = 9^\circ 12' 38''$ (LT)
 D = $1^\circ 30' 00''$
 R = 3,820.00'
 T = 307.71'
 L = 614.09'
 E = 12.37'
 e = NC (60 MPH)
 T.R. = N/A
 S.E. RUN = N/A
 P.C. STA. = 1780+61.45
 P.T. STA. = 1786+75.53

PROP. CURVE DET2-2
 PI STA. = 1790+17.66
 $\Delta = 10^\circ 14' 09''$ (RT)
 D = $1^\circ 30' 00''$
 R = 3,820.00'
 T = 342.13'
 L = 682.44'
 E = 15.29'
 e = NC (60 MPH)
 T.R. = N/A
 S.E. RUN = N/A
 P.C. STA. = 1786+75.53
 P.T. STA. = 1793+57.97

ALIGNMENT COORDINATES - DETOUR NO 2			
	STATION	N	E
POT	1775+00.00	1524543.8011	2108730.2553
PC	1780+61.45	1524544.7704	2109291.6997
PI	1783+69.15	1524545.3016	2109599.4048
PRC	1786+75.53	1524595.0784	2109903.0574
PI	1790+17.66	1524650.4243	2110240.6834
PT	1793+57.97	1524644.8928	2110582.7709
POT	1801+02.64	1524632.8533	2111327.3364



ALIGNMENT COORDINATES - EX US 34			
	STATION	N	E
POT	549+00.00	1524490.4736	2114373.8327
PC	561+13.12	1524511.5838	2113160.8964
PI	565+00.00	1524518.3162	2112774.0750
PT	568+86.87	1524521.4716	2112387.2078
PC	593+69.23	1524541.7176	2109904.9353
PI	597+39.90	1524544.7407	2109534.2777
PT	601+10.56	1524543.8724	2109163.6087
PC	610+71.30	1524541.6219	2108202.8730
PI	613+78.97	1524540.9012	2107895.2039
PT	616+86.64	1524537.3022	2107587.5549
POT	618+79.52	1524535.0459	2107394.6835

EXIST. CURVE E002-1
 PI STA. = 565+00.00
 $\Delta = 0^\circ 31' 47''$ (LT)
 D = $0^\circ 04' 06''$
 R = 83,681.62'
 T = 386.88'
 L = 773.75'
 E = 0.89'
 e = ----
 T.R. = ----
 S.E. RUN = ----
 P.C. STA. = 561+13.12
 P.T. STA. = 568+86.87

EXIST. CURVE E002-2
 PI STA. = 597+39.90
 $\Delta = 0^\circ 36' 05''$ (LT)
 D = $0^\circ 04' 52''$
 R = 70,612.79'
 T = 370.67'
 L = 741.33'
 E = 0.97'
 e = ----
 T.R. = ----
 S.E. RUN = ----
 P.C. STA. = 593+69.23
 P.T. STA. = 601+10.56

EXIST. CURVE E002-3
 PI STA. = 613+78.97
 $\Delta = 0^\circ 32' 10''$ (LT)
 D = $0^\circ 05' 14''$
 R = 65,773.68'
 T = 307.67'
 L = 615.34'
 E = 0.72'
 e = ----
 T.R. = ----
 S.E. RUN = ----
 P.C. STA. = 610+71.30
 P.T. STA. = 616+86.64

PROP. CURVE TR178-1
 PI STA. = 42+96.99
 $\Delta = 11^\circ 47' 03''$ (RT)
 D = $6^\circ 21' 58''$
 R = 900.00'
 T = 92.88'
 L = 185.11'
 E = 4.78'
 e = 4' (30 MPH)
 T.R. = 28'
 S.E. RUN = 54'
 P.C. STA. = 42+04.11
 P.T. STA. = 43+89.22

PROP. CURVE TR178-2
 PI STA. = 46+99.67
 $\Delta = 21^\circ 36' 57''$ (LT)
 D = $9^\circ 32' 57''$
 R = 600.00'
 T = 114.54'
 L = 226.36'
 E = 10.84'
 e = 4' (30 MPH)
 T.R. = 63'
 S.E. RUN = 28'
 P.C. STA. = 45+85.13
 P.T. STA. = 48+11.49

PROP. CURVE TR178-3
 PI STA. = 52+54.90
 $\Delta = 8^\circ 31' 25''$ (RT)
 D = $6^\circ 21' 58''$
 R = 900.00'
 T = 67.07'
 L = 133.89'
 E = 2.50'
 e = NC (30 MPH)
 T.R. = N/A
 S.E. RUN = N/A
 P.C. STA. = 51+87.83
 P.T. STA. = 53+21.72

ALIGNMENT COORDINATES - TR 178 1800E			
	STATION	N	E
POT	38+00.00	1522969.8679	2108905.1585
PC	42+04.10	1523373.8767	2108914.3832
PI	42+96.99	1523466.7331	2108916.5034
PT	43+89.22	1523557.1994	2108937.5427
PC	45+85.13	1523748.0182	2108981.9203
PI	46+99.67	1523859.5829	2109007.8662
PT	48+11.49	1523972.8599	2108990.8891
PC	51+87.83	1524345.0445	2108935.1089
PI	52+54.90	1524411.3717	2108925.1683
PT	53+21.72	1524478.4398	2108925.1683
POT	53+86.60	1524543.3139	2108925.1683

ALIGNMENT COORDINATES - PR U.S. 34			
U.S.34	STATION	N	E
PI	776+84.33	1524159.2876	2108962.9488
PC	780+97.91	1524290.6809	2109355.1035
PI	791+10.01	1524612.2215	2110314.7698
PT	801+02.63	1524595.8581	2111326.7382

