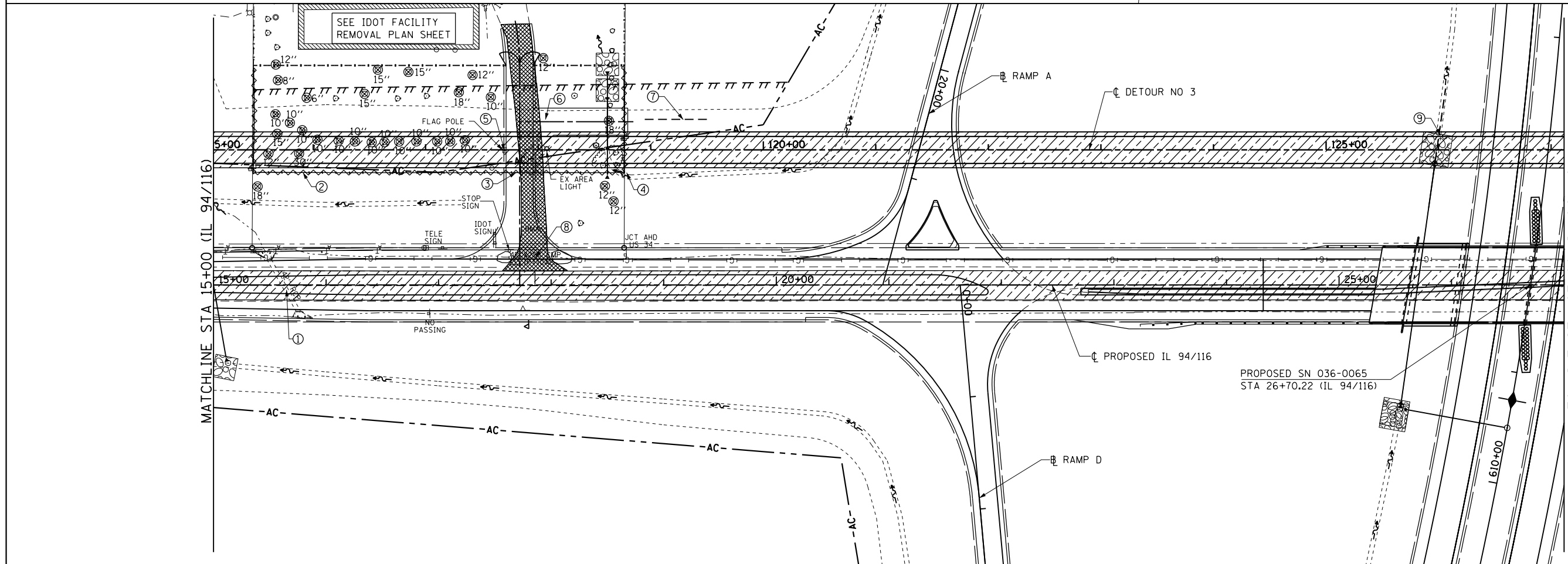


- ① PIPE CULVERT REMOVAL
30' - 15" CMP
 - ② PIPE CULVERT REMOVAL
56' - 15" CMP
 - ③ PIPE CULVERT REMOVAL
69' - P CUL, CL D, T1, 15"
 - ④ PIPE CULVERT REMOVAL
113' - P CUL, CL D, T2, 36"
- SEE SCHOOL ENTRANCE,
REMOVAL PLAN SHEET
- SCALE: 1" = 50'
- SEE SHEET 1 OF 28
FOR REMOVAL LEGEND



- ① REMOVAL OF EXISTING
STRUCTURE No 7
SEE SPECIAL PROVISIONS
 - ② 325' - CHAINLINK
FENCE REMOVAL
 - ③ 1 EA - CHAIN LINK
GATES REMOVAL
 - ④ 175' - CHAIN LINK
FENCE REMOVAL
 - ⑤ REMOVE AND SALVAGE FLAG
POLE. INCIDENTAL TO DRV
PVMT REM.
 - ⑥ PIPE CULVERT REMOVAL
56' - P CUL, CL D, T2, 15"
 - ⑦ PIPE CULVERT REMOVAL
58' - P CUL, CL D, T2, 15"
 - ⑧ PIPE CULVERT REMOVAL
42' - P CUL, 36" EQRS CMP
 - ⑨ PIPE CULVERT REMOVAL
77' - P CUL, CL D, T1, 48"
- SEE IDOT FACILITY
REMOVAL PLAN SHEET
- SCALE: 1" = 50'
- SEE SHEET 1 OF 28
FOR REMOVAL LEGEND

FILE NAME =
D468409-SHT-REM-015-IL94.dgn

USER NAME = zachl
PLOT SCALE = 100.0000' / in.
PLOT DATE = 10/16/2012

DESIGNED - DBS
DRAWN - PSBA
CHECKED - CSB
DATE - 10/2012

REVISED -
REVISED -
REVISED -
REVISED -

**STATE OF ILLINOIS
DEPARTMENT OF TRANSPORTATION**

**REMOVAL PLAN
IL 94 /116 & DETOUR #3**

SCALE: 1" = 50' SHEET NO. 15 OF 28 SHEETS STA. 3+00 TO STA. 27+00

F.A.P. RTE.	SECTION	COUNTY	TOTAL SHEETS	SHEET NO.
313	7-2; 6-1	HENDERSON	976	121
CONTRACT NO. 68409				
ILLINOIS FED. AID PROJECT				