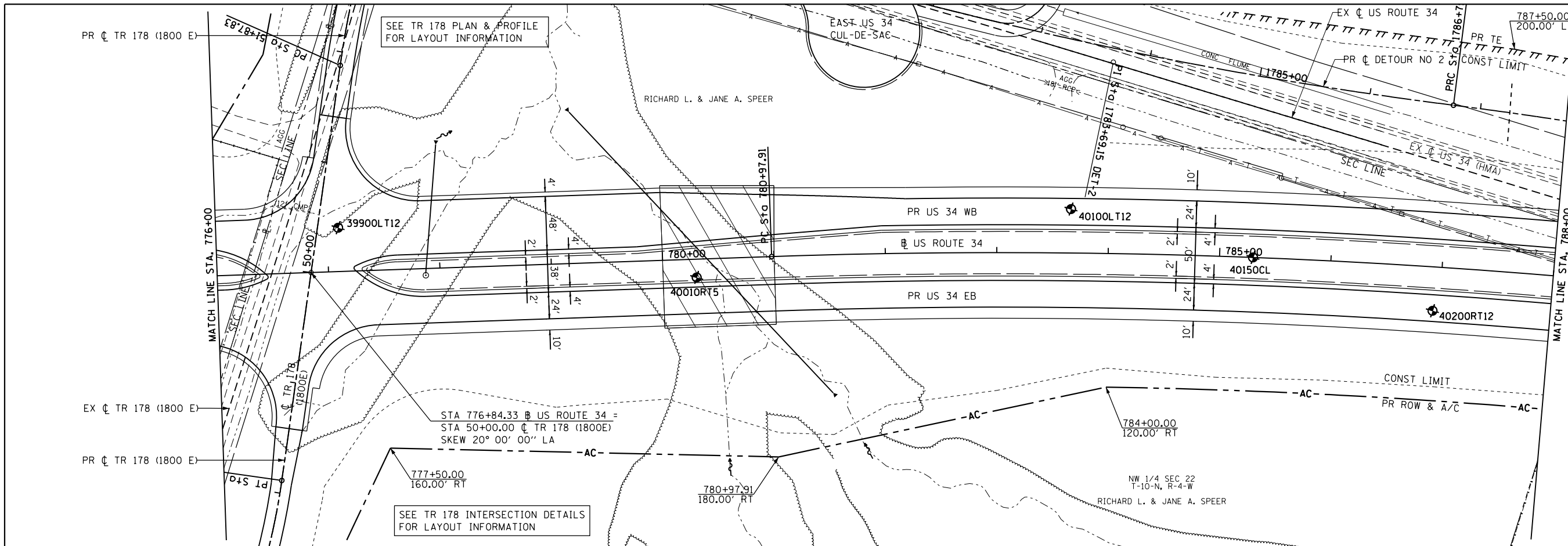
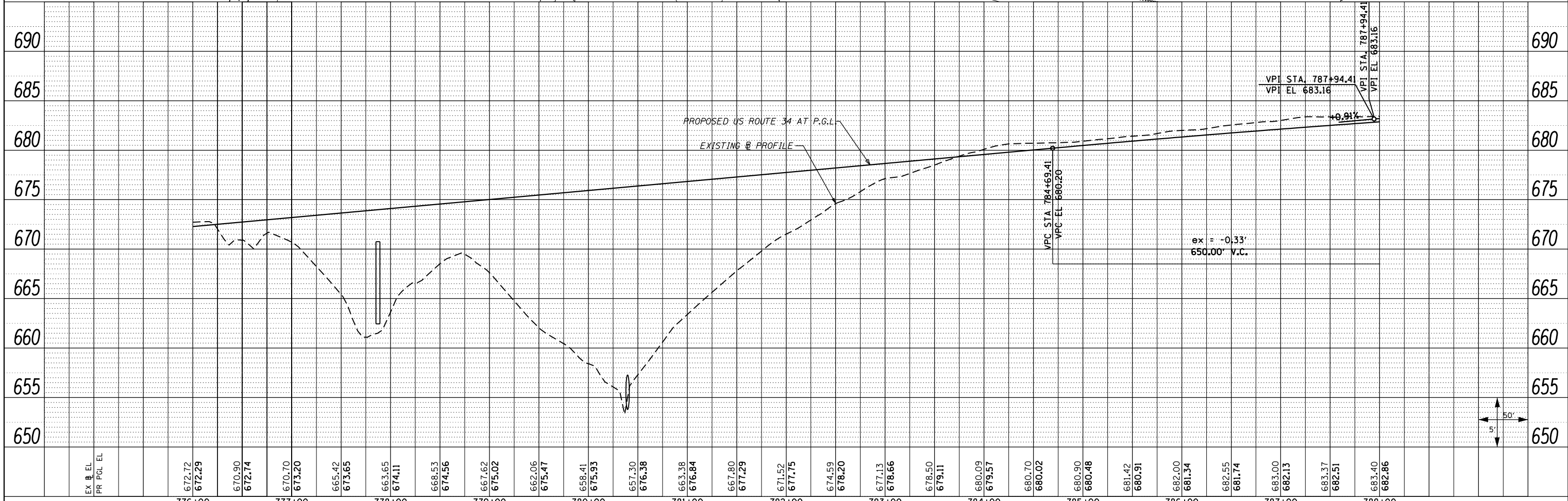
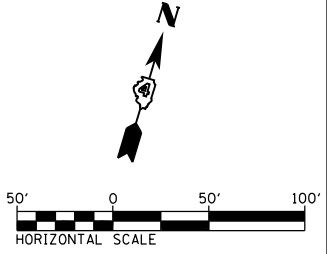


PLAN	SURVEYED	BY	DATE
	PLOTTED		
	ALIGNED		
	CHECKED		
	FILED		
	NO.		

PROFILE	SURVEYED	BY	DATE
	PLOTTED		
	GRADES		
	CHECKED		
	STRUCTURE		
	NOTATIONS		
	CHP		
	NO.		



PROP. CURVE US34-11  
 PI STA. = 791+10.01  
 $\Delta$  = 19° 27' 00" (RT)  
 D = 0° 58' 13"  
 R = 5,905.50'  
 T = 1,012.10'  
 L = 2,004.73'  
 E = 86.10'  
 e = 3.26% (70 MPH)  
 T.R. = 44'  
 S.E. RUN = 147'  
 P.C. STA. = 780+97.91  
 P.T. STA. = 801+02.64



FILE NAME =	USER NAME = zechl	DESIGNED - DBS	REVISED -	<b>STATE OF ILLINOIS DEPARTMENT OF TRANSPORTATION</b>	<b>ROADWAY PLAN AND PROFILE US ROUTE 34</b>			F.A.P. RTE. 313	SECTION 7-2 ; 6-1	COUNTY HENDERSON	TOTAL SHEETS 976	SHEET NO. 159
D468409-shr-25-plnprf-US34-23.dgn		DRAWN - PSBA	REVISED -		SCALE: 1"=50'	SHEET NO. 25 OF 67 SHEETS	STA. 776+00 TO STA. 788+00	CONTRACT NO. 68409		ILLINOIS FED. AID PROJECT		
		CHECKED - CSB	REVISED -									
		DATE - 10/2012	REVISED -									