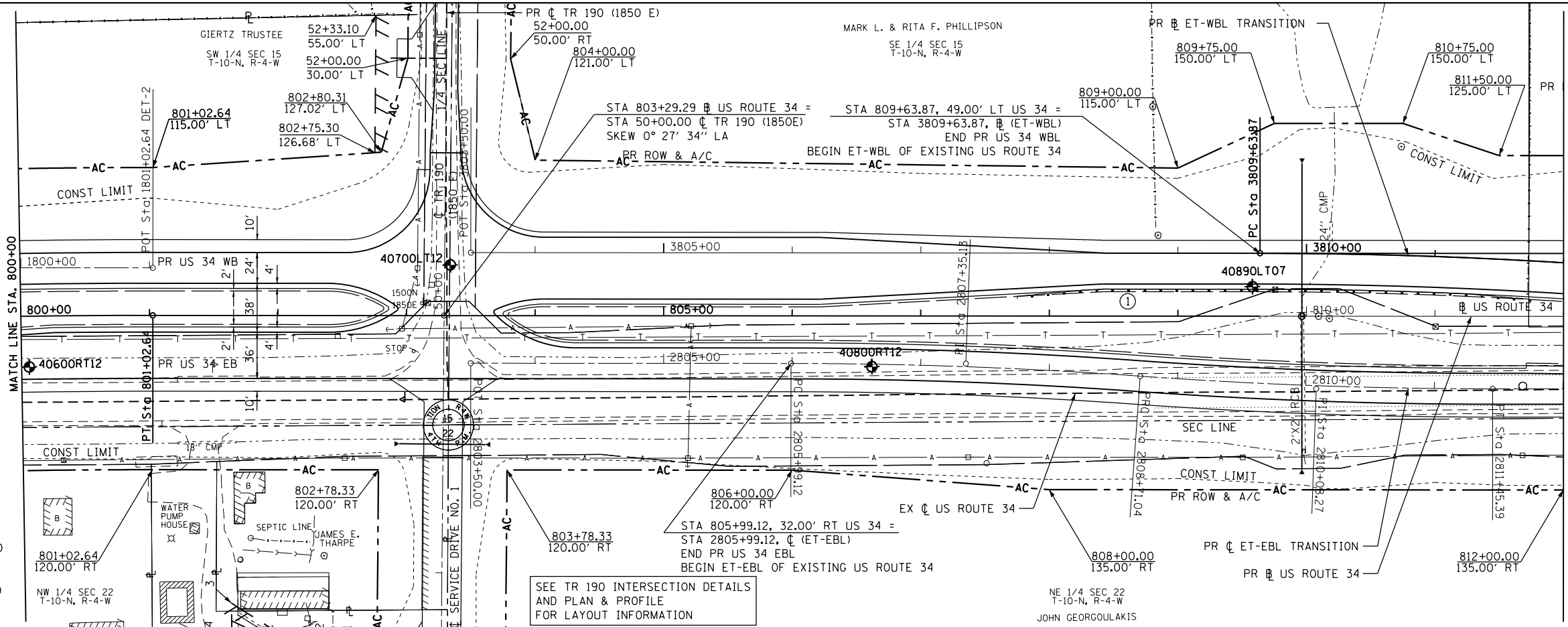


PLAN	SURVEYED	DATE
	PLOTTED	
	ALIGNED	
	CHECKED	
	FILED	
	NO.	

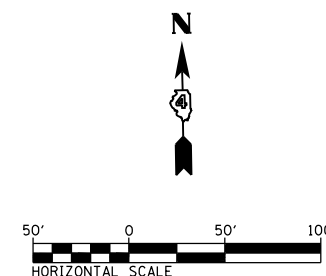
PROP. CURVE US34-11
 PI STA. = 791+10.01
 $\Delta = 19^\circ 27' 00''$ (RT)
 $R = 0^\circ 58' 13''$
 $D = 5,905.50'$
 $T = 1,012.10'$
 $L = 2,004.73'$
 $E = 86.10'$
 $e = 3.26\%$ (70 MPH)
 $T.R. = 44'$
 $S.E. RUN = 147'$
 $P.C. STA. = 780+97.91$
 $P.T. STA. = 801+02.64$

PROP. CURVE ELT-WB-1
 PI STA. = 3812+62.33
 $\Delta = 8^\circ 56' 06''$ (RT)
 $D = 1^\circ 30' 00''$
 $R = 3,820.00'$
 $T = 298.46'$
 $L = 595.70'$
 $E = 11.64'$
 $e = NC$ (60 MPH)
 $T.R. = N/A$
 $S.E. RUN = N/A$
 $P.C. STA. = 3809+63.87$
 $P.T. STA. = 3815+59.58$

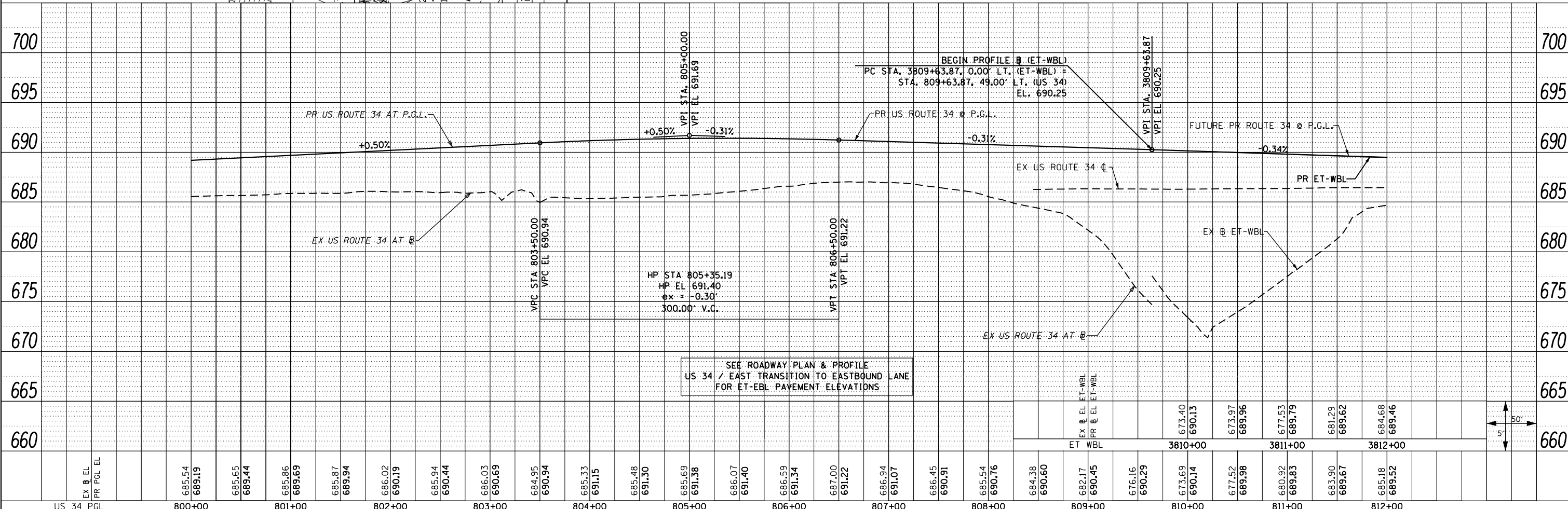
ET-WBL = EAST TRANSITION TO WESTBOUND LANE
 ET-EBL = EAST TRANSITION TO EASTBOUND LANE



① TEMPORARY GUARDRAIL
 STA 807+75.00, 17.34' LT. TO
 STA 811+75.00, 13.23' LT.
 1 - TR BAR TRM T1 SPL TAN
 300.00' SPBGR TY A
 1 - TR BAR TRM T1 SPL TAN
 REMOVE TEMPORARY
 GUARDRAIL AT COMPLETION
 OF MEDIAN INLET AND
 DITCH GRADING



PROFILE	SURVEYED	DATE
	PLOTTED	
	GRADES	
	CHECKED	
	STRUCTURE	
	NOTATIONS	
	CHKD	
	NO.	



SEE ROADWAY PLAN & PROFILE
 US 34 / EAST TRANSITION TO EASTBOUND LANE
 FOR ET-EBL PAVEMENT ELEVATIONS

FILE NAME = D:\68409-sh-28-pl\prf-US34-025W.dgn	USER NAME = zech1	DESIGNED - DBS	REVISED -	STATE OF ILLINOIS DEPARTMENT OF TRANSPORTATION	ROADWAY PLAN AND PROFILE US ROUTE 34 - EAST TRANSITION TO WESTBOUND LANE		F.A.P. RTE. 313	SECTION 7-2 ; 6-1	COUNTY HENDERSON	TOTAL SHEETS 976	SHEET NO. 162	
PLOT SCALE = 100.0000' / 1"	CHECKED - CSB	REVISED -	REVISED -		SCALE: 1"=50'	SHEET NO. 28 OF 67 SHEETS	STA. 800+00 TO STA. 812+00	CONTRACT NO. 68409		ILLINOIS FED. AID PROJECT		
PLOT DATE = 10/16/2012	DATE - 10/2012	REVISED -	REVISED -									