

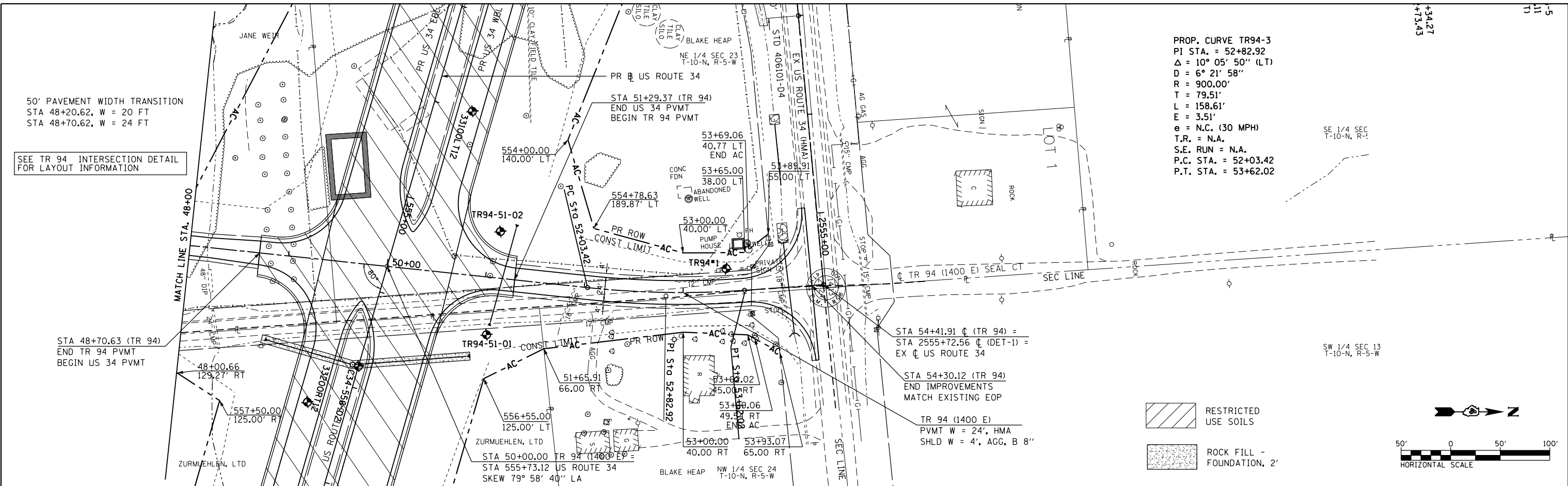
DATE	
BY	
PLAN	SURVEYED
	PLOTTED
	ALIGNED
	CHECKED
	DESIGNED
	FILE NAME
NO.	

DATE	
BY	
PROFILE	SURVEYED
	GRADES CHECKED
	STRUCTURE NOTATIONS CHECKED
NO.	

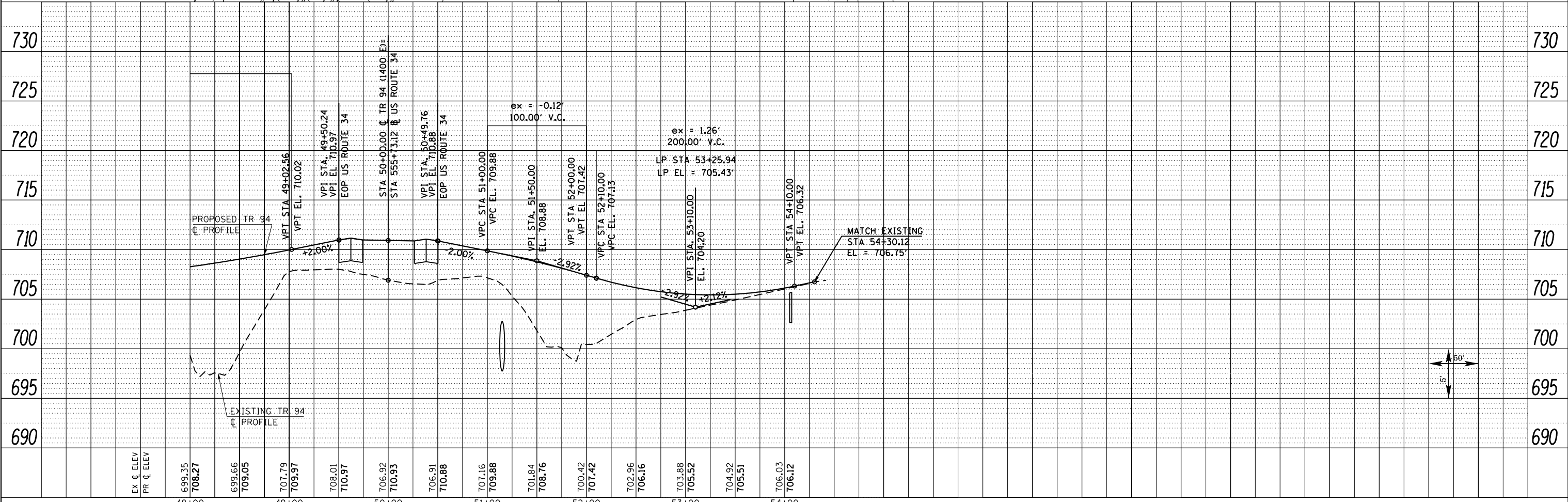
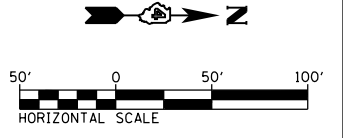
50' PAVEMENT WIDTH TRANSITION  
 STA 48+20.62, W = 20 FT  
 STA 48+70.62, W = 24 FT

SEE TR 94 INTERSECTION DETAIL  
 FOR LAYOUT INFORMATION

PROP. CURVE TR94-3  
 PI STA. = 52+82.92  
 $\Delta = 10^\circ 05' 50''$  (LT)  
 D = 6° 21' 58"  
 R = 900.00'  
 T = 79.51'  
 L = 158.61'  
 E = 3.51'  
 e = N.C. (30 MPH)  
 T.R. = N.A.  
 S.E. RUN = N.A.  
 P.C. STA. = 52+03.42  
 P.T. STA. = 53+62.02



RESTRICTED USE SOILS  
 ROCK FILL - FOUNDATION, 2'



FILE NAME =	USER NAME = zechl	DESIGNED - DBS	REVISED -	<b>STATE OF ILLINOIS DEPARTMENT OF TRANSPORTATION</b>	<b>ROADWAY PLAN &amp; PROFILE TR 94 (1400 E)</b>	F.A.P. R.E.	SECTION	COUNTY	TOTAL SHEETS	SHEET NO.	
D468409-SHT-47-PLNPRF-TR94-02.dgn		DRAWN - PSBA	REVISED -			313	7-2; 6-1	HENDERSON	976	181	
		CHECKED - CSB	REVISED -			CONTRACT NO. 68409					
		DATE - 10/2012	REVISED -			ILLINOIS FED. AID PROJECT					