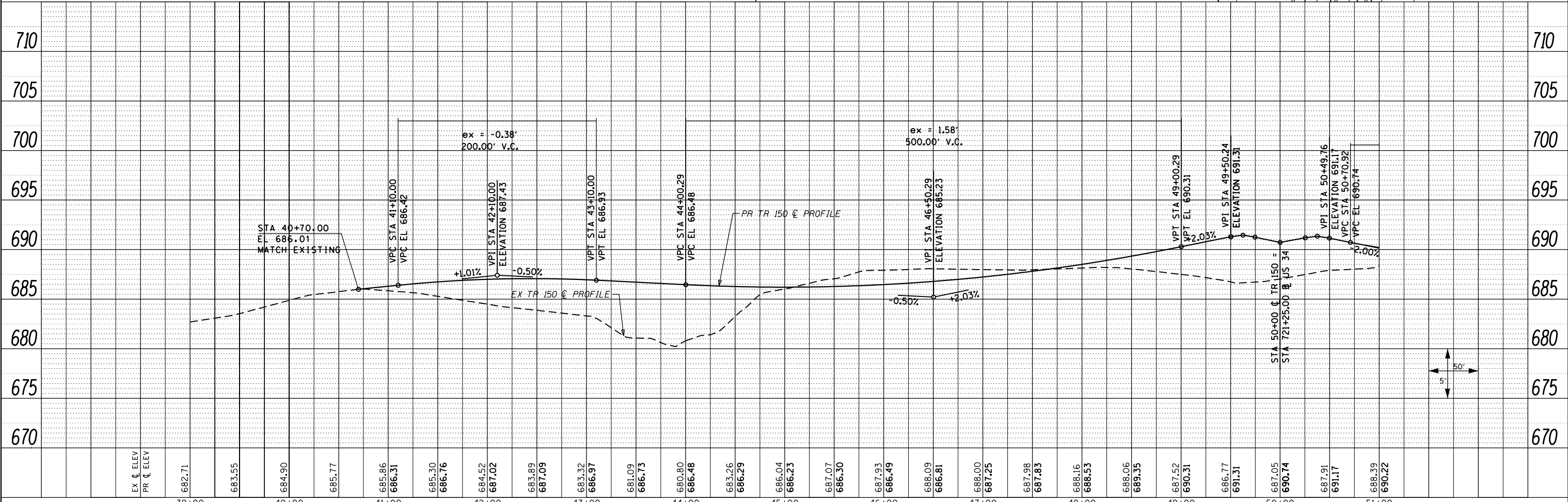
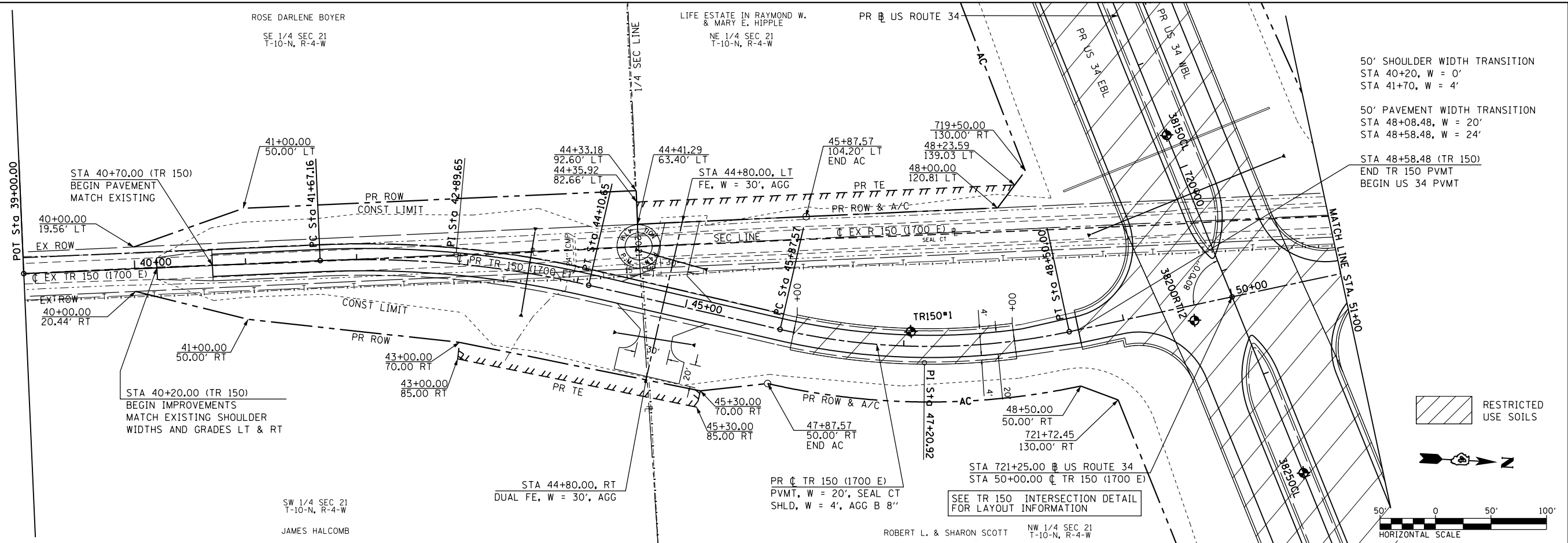


PROP. CURVE TR150-1  
 PI STA. = 42+89.65  
 $\Delta = 15^\circ 30' 03''$  (RT)  
 $D = 6^\circ 21' 58''$   
 $R = 900.00'$   
 $T = 122.49'$   
 $L = 243.49'$   
 $E = 8.30'$   
 $e = 3.90\%$  (45 MPH)  
 $T.R. = 34'$   
 $S.E. RUN = 90'$   
 $P.C. STA. = 41+67.16$   
 $P.T. STA. = 44+10.65$

PROP. CURVE TR150-2  
 PI STA. = 47+20.92  
 $\Delta = 25^\circ 03' 37''$  (LT)  
 $D = 9^\circ 32' 57''$   
 $R = 600.00'$   
 $T = 133.35'$   
 $L = 262.43'$   
 $E = 14.64'$   
 $e = 3.40\%$  (30 MPH)  
 $T.R. = 28'$   
 $S.E. RUN = 75'$   
 $P.C. STA. = 45+87.57$   
 $P.T. STA. = 48+50.00$

PLAN	SURVEYED	DATE
	PLOTTED	BY
	ALIGNED	
	CHECKED	
	FILED	
	NO.	

PROFILE	SURVEYED	DATE
	PLOTTED	BY
	GRADES	
	CHECKED	
	STRUCTURE	
	NOTATIONS	
	CHKD	
	NO.	



FILE NAME =	USER NAME = zech1	DESIGNED - DBS	REVISED -	<b>STATE OF ILLINOIS</b> <b>DEPARTMENT OF TRANSPORTATION</b>	<b>ROADWAY PLAN AND PROFILE</b> <b>TR 150 (1700 E)</b>	F.A.P. RTE. = 313	SECTION = 7-2 ; 6-1	COUNTY = HENDERSON	TOTAL SHEETS = 976	SHEET NO. = 183	
D468409-SHT-49-PLNPRF-TR150-01.dgn	PLOT SCALE = 100.0000' / 1" =	DRAWN - PSBA	REVISED -			SCALE: 1" = 50'	SHEET NO. 49 OF 67 SHEETS	STA. 39+00 TO STA. 51+00	CONTRACT NO. 68409		
	PLOT DATE = 10/16/2012	CHECKED - CSB	REVISED -			ILLINOIS FED. AID PROJECT					
		DATE = 10/2012	REVISED -								