

- (A) STONE RIPRAP CLASS B3 L110' X W10'
- (B) STONE RIPRAP CLASS B4 L30' X W30'
- (C) STONE RIPRAP CLASS B3 L120' X W10'
- (D) STONE RIPRAP CLASS B4 L20' X W20'

SEE RAMP D DRAINAGE PLAN AND PROFILE FOR DRAINAGE INFORMATION

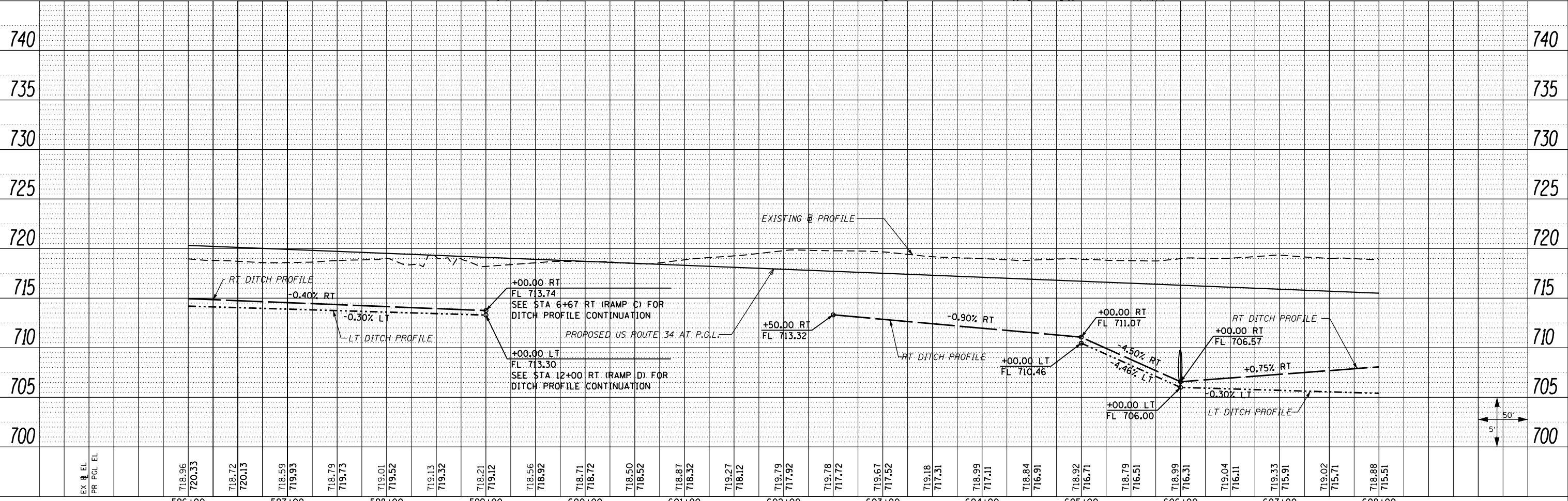
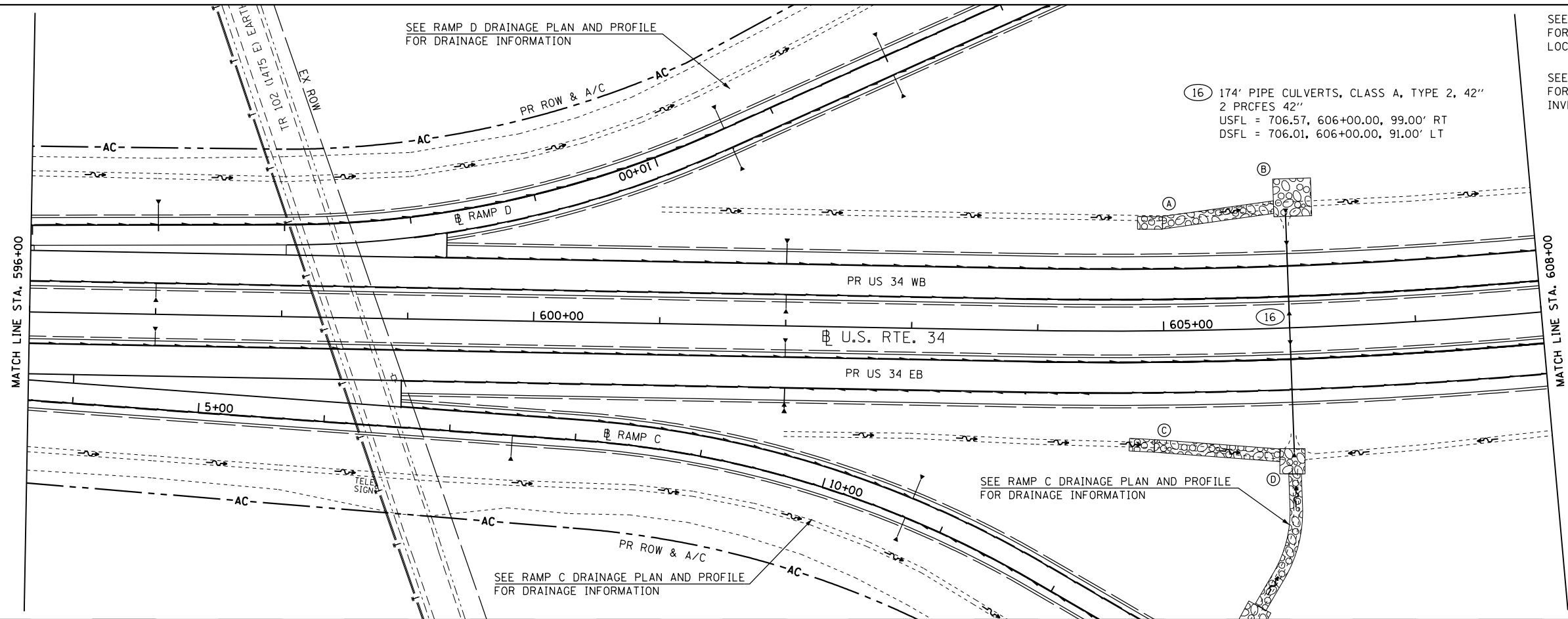
(16) 174' PIPE CULVERTS, CLASS A, TYPE 2, 42"  
 2 PCRFCS 42"  
 USFL = 706.57, 606+00.00, 99.00' RT  
 DSFL = 706.01, 606+00.00, 91.00' LT

SEE SCHEDULE OF QUANTITIES FOR PIPE UNDERDRAIN SHEETS LOCATION, OFFSET, AND ELEVATION

SEE PIPE UNDERDRAIN SHEETS FOR UNDERDRAIN PROFILES AND INVERTS AT EDGE OF PAVEMENT

PLAN	SURVEYED	DATE
	PLOTTED	BY
	ALIGNED	
	CHECKED	
	FILED	
	NO.	

PROFILE	SURVEYED	DATE
	PLOTTED	BY
	GRADES	
	CHECKED	
	STRUCTURE	
	NOTATIONS	
	NO.	



FILE NAME =	USER NAME = zech1	DESIGNED - DBS	REVISED -	<b>STATE OF ILLINOIS DEPARTMENT OF TRANSPORTATION</b>	<b>DRAINAGE PLAN AND PROFILE US ROUTE 34</b>			F.A.P. RTE. 313	SECTION 7-2 ; 6-1	COUNTY HENDERSON	TOTAL SHEETS 976	SHEET NO. 282
D468409-shd-08-drain-US34-08.dgn	PLOT SCALE = 100.0000' / 1"	DRAWN - PSBA	REVISED -		SCALE: 1"=50'	SHEET NO. 8 OF 61 SHEETS	STA. 596+00 TO STA. 608+00	CONTRACT NO. 68409		ILLINOIS FED. AID PROJECT		
	PLOT DATE = 10/16/2012	CHECKED - CSB	REVISED -									
		DATE - 10/2012	REVISED -									