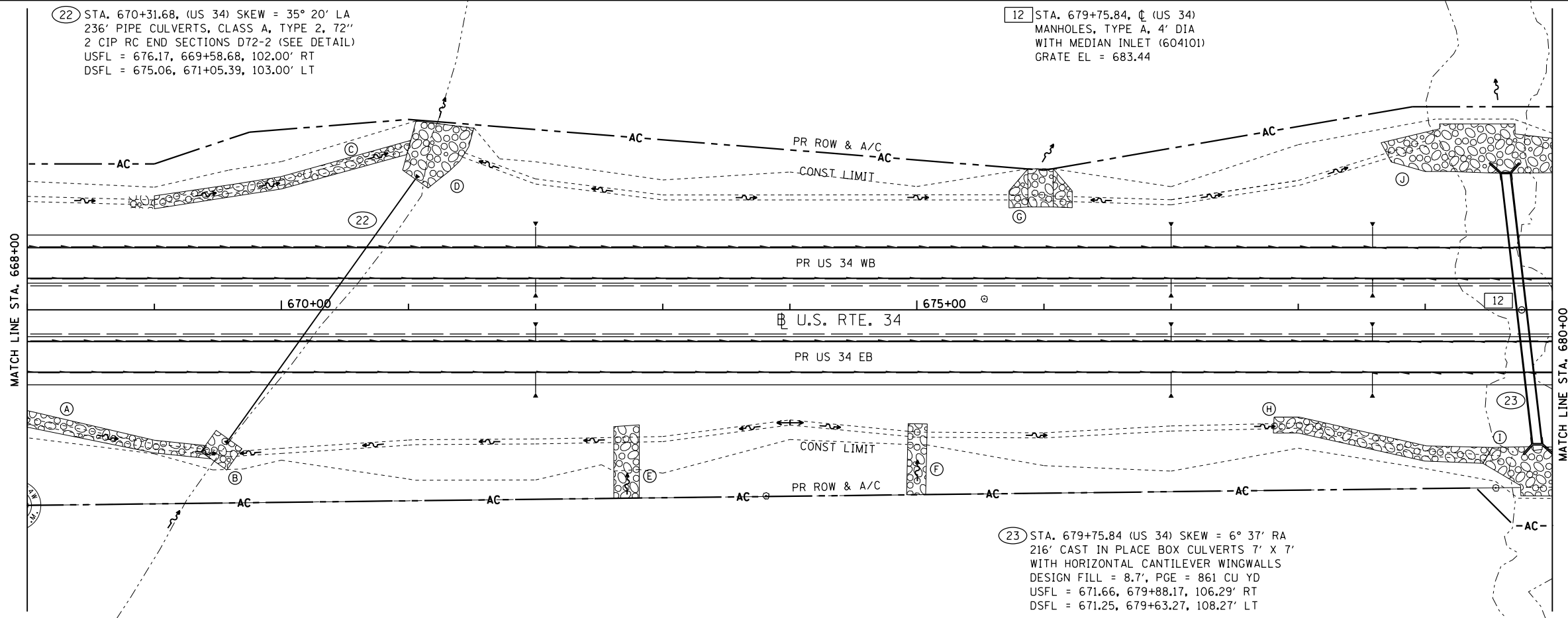
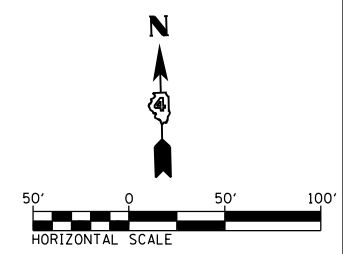


- (A) STONE RIPRAP CLASS B3 L147' X W10'
- (B) STONE RIPRAP CLASS B3 L24' X W20'
- (C) STONE RIPRAP CLASS B3 L216' X W10'
- (D) STONE RIPRAP CLASS B5 L47' X W20' TO W50'
- (E) STONE RIPRAP CLASS B3 EROSION PROTECTION L56' X W20'
- (F) STONE RIPRAP CLASS B3 EROSION PROTECTION L56' X W15'
- (G) STONE RIPRAP CLASS B3 L40' X W30' (AVE) (AT DITCH OUTLET)
- (H) STONE RIPRAP CLASS B4 L170' X W10'
- (I) STONE RIPRAP CLASS A4 L75' X W39'
- (J) STONE RIPRAP CLASS A5 L190' X W37'



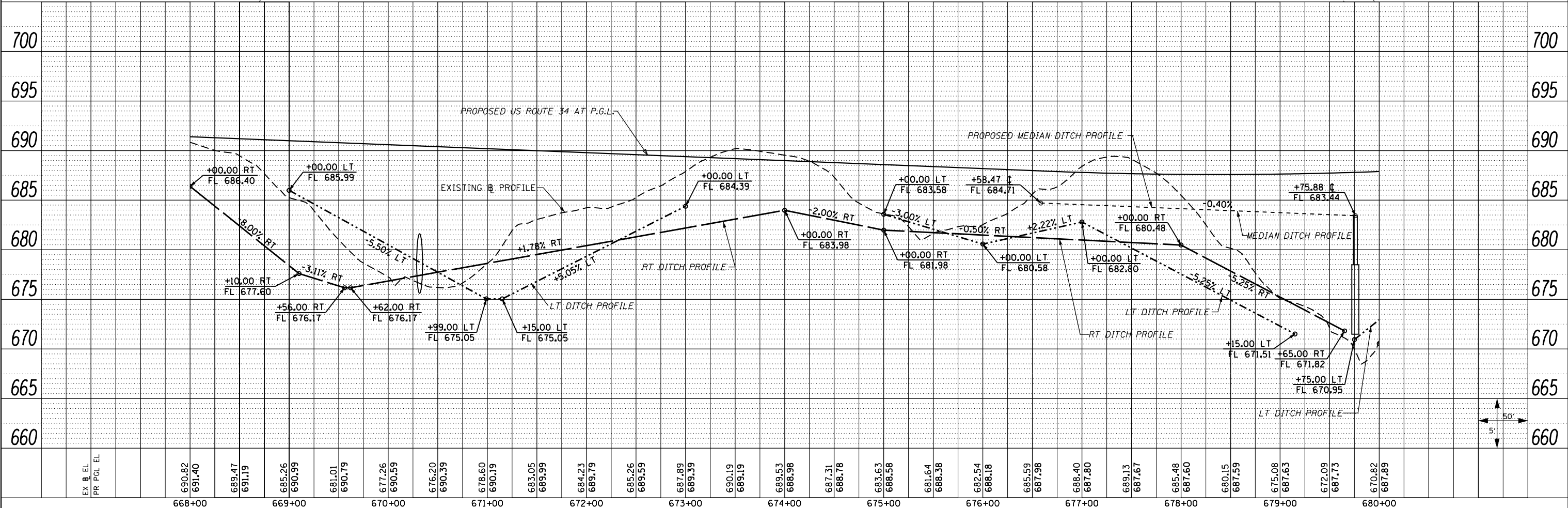
SEE SCHEDULE OF QUANTITIES FOR PIPE UNDERDRAIN OUTLETS LOCATION, OFFSET, AND ELEVATION

SEE PIPE UNDERDRAIN SHEETS FOR UNDERDRAIN PROFILES AND INVERTS AT EDGE OF PAVEMENT



DATE	
BY	
PLAN	
NO.	
NO.	
NO.	
NO.	
NO.	

DATE	
BY	
PROFILE	
NO.	
NO.	
NO.	
NO.	
NO.	



FILE NAME =	USER NAME = zech1	DESIGNED - DBS	REVISED -	STATE OF ILLINOIS DEPARTMENT OF TRANSPORTATION	DRAINAGE PLAN AND PROFILE		F.A.P. RTE. 313	SECTION 7-2 ; 6-1	COUNTY HENDERSON	TOTAL SHEETS 976	SHEET NO. 288
D468409-sh14-drain-US34-14.dgn	PLOT SCALE = 100.0000' / 1"	DRAWN - PSBA	REVISED -		US ROUTE 34		SCALE: 1"=50'	SHEET NO. 14 OF 61 SHEETS	STA. 668+00 TO STA. 680+00	CONTRACT NO. 68409	
	PLOT DATE = 10/16/2012	CHECKED - CSB	REVISED -						ILLINOIS FED. AID PROJECT		
		DATE - 10/2012	REVISED -								