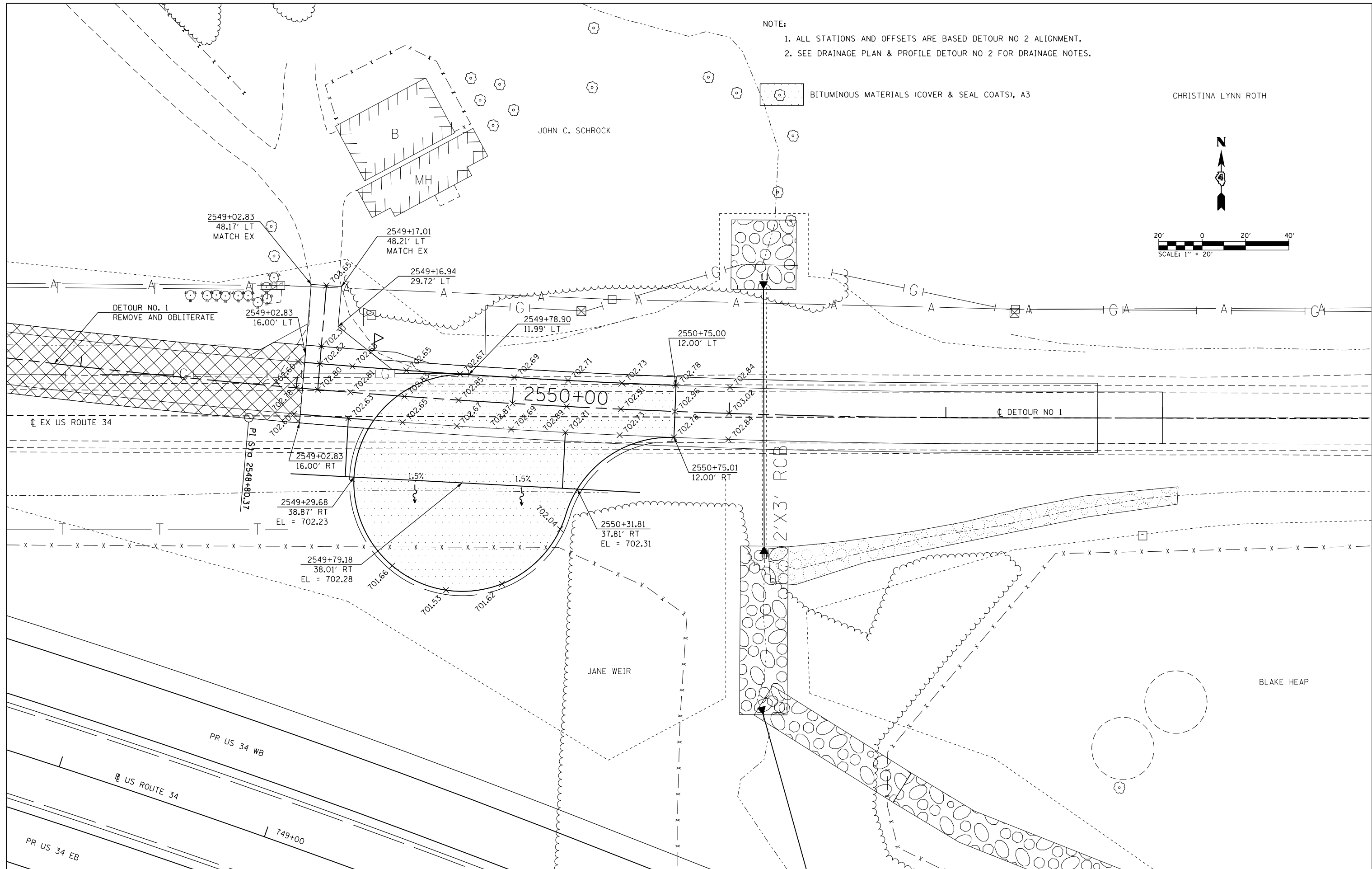
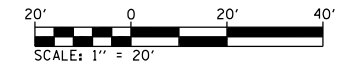


- NOTE:
1. ALL STATIONS AND OFFSETS ARE BASED DETOUR NO 2 ALIGNMENT.
 2. SEE DRAINAGE PLAN & PROFILE DETOUR NO 2 FOR DRAINAGE NOTES.

BITUMINOUS MATERIALS (COVER & SEAL COATS), A3

CHRISTINA LYNN ROTH



FILE NAME =	USER NAME = zachl	DESIGNED - DBS	REVISED -
D468409-SHT-20-INTERSEC-US34-W-CULDESAC.dgn		DRAWN - PSBA	REVISED -
	PLOT SCALE = 40.0000' / in.	CHECKED - CSB	REVISED -
	PLOT DATE = 10/16/2012	DATE - 10/2012	REVISED -

**STATE OF ILLINOIS
DEPARTMENT OF TRANSPORTATION**

**INTERSECTION DETAILS
EXISTING US ROUTE 34 (WEST OF TR 94) CUL-DE-SAC**

SCALE: 1" = 20' SHEET NO. 20 OF 21 SHEETS STA. TO STA.

F.A.P. RTE.	SECTION	COUNTY	TOTAL SHEETS	SHEET NO.
313	7-2; 6-1	HENDERSON	976	387
CONTRACT NO. 68409				
ILLINOIS FED. AID PROJECT				