

**PAVEMENT MARKING LEGEND**

- ① MODIFIED URETHANE PAVEMENT MARKING - LETTERS & SYMBOLS
- ② MODIFIED URETHANE PAVEMENT MARKING - LINE 4" WHITE SOLID
- ③ MODIFIED URETHANE PAVEMENT MARKING - LINE 4" YELLOW SOLID
- ④ MODIFIED URETHANE PAVEMENT MARKING - LINE 4" YELLOW SOLID (DOUBLE LINE)
- ⑤ MODIFIED URETHANE PAVEMENT MARKING - LINE 4" YELLOW SKIP DASH
- ⑥ MODIFIED URETHANE PAVEMENT MARKING - LINE 4" WHITE SOLID
- ⑦ MODIFIED URETHANE PAVEMENT MARKING - LINE 6" WHITE SKIP DASH
- ⑧ MODIFIED URETHANE PAVEMENT MARKING - LINE 8" WHITE SOLID
- ⑨ MODIFIED URETHANE PAVEMENT MARKING - LINE 8" WHITE DOTTED
- ⑩ MODIFIED URETHANE PAVEMENT MARKING - LINE 12" WHITE SOLID
- ⑪ MODIFIED URETHANE PAVEMENT MARKING - LINE 12" YELLOW SOLID
- ⑫ MODIFIED URETHANE PAVEMENT MARKING - LINE 24" WHITE SOLID (STOP BAR)

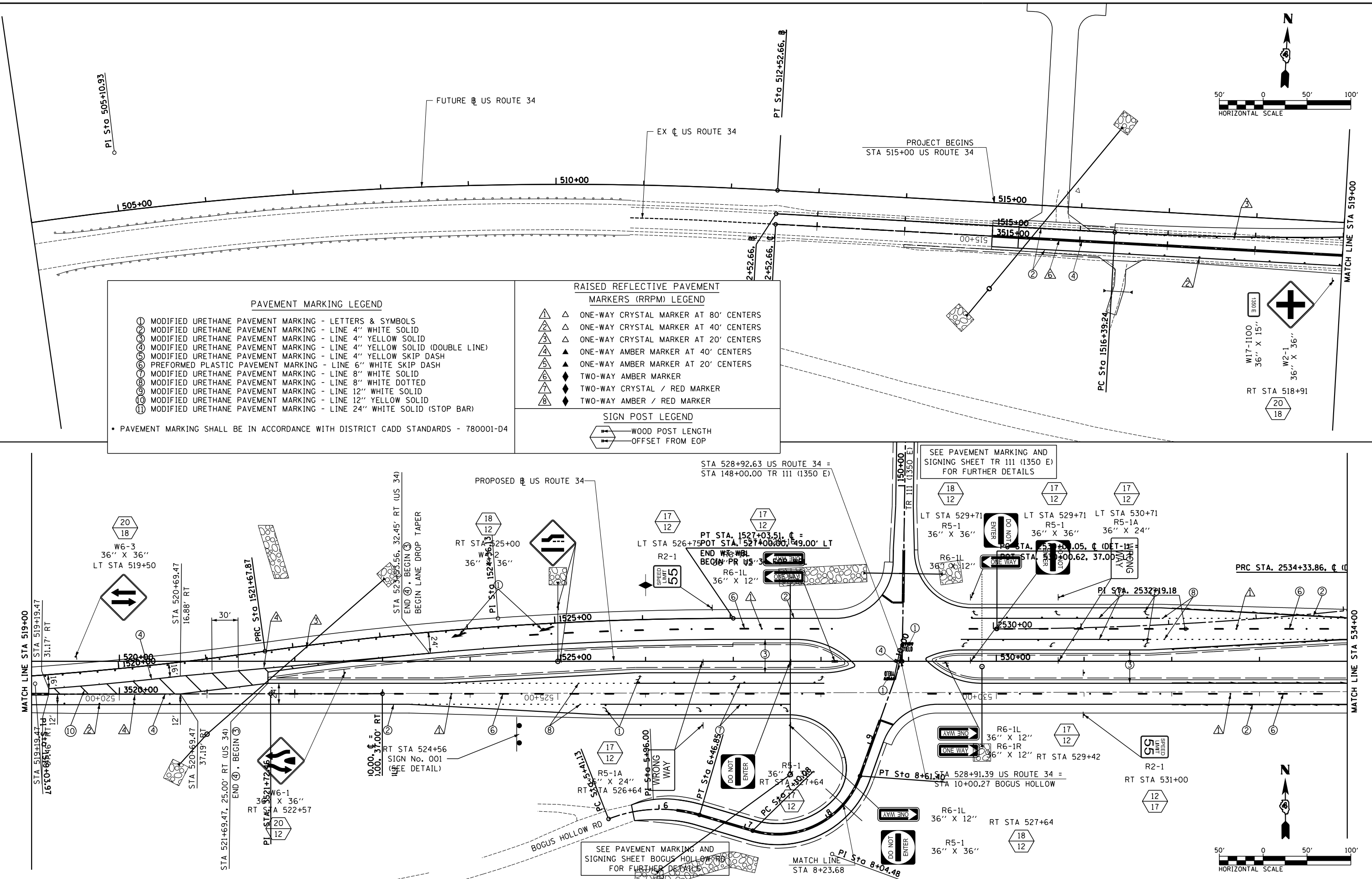
• PAVEMENT MARKING SHALL BE IN ACCORDANCE WITH DISTRICT CADD STANDARDS - 780001-D4

**RAISED REFLECTIVE PAVEMENT MARKERS (RRPM) LEGEND**

- ① △ ONE-WAY CRYSTAL MARKER AT 80' CENTERS
- ② △ ONE-WAY CRYSTAL MARKER AT 40' CENTERS
- ③ △ ONE-WAY CRYSTAL MARKER AT 20' CENTERS
- ④ ▲ ONE-WAY AMBER MARKER AT 40' CENTERS
- ⑤ ▲ ONE-WAY AMBER MARKER AT 20' CENTERS
- ⑥ ◆ TWO-WAY AMBER MARKER
- ⑦ ◆ TWO-WAY CRYSTAL / RED MARKER
- ⑧ ◆ TWO-WAY AMBER / RED MARKER

**SIGN POST LEGEND**

- WOOD POST LENGTH
- OFFSET FROM EOP



FILE NAME = D468409-SHT-01-PMK-US34-.dgn

USER NAME = natal  
 DESIGNED - DBS  
 DRAWN - PSBA  
 PLOT SCALE = 100.0000' / in.  
 CHECKED - CSB  
 PLOT DATE = 11/14/2012  
 DATE - 10/2012

REVISED - -  
 REVISED - -  
 REVISED - -  
 REVISED - -

**STATE OF ILLINOIS  
 DEPARTMENT OF TRANSPORTATION**

**PAVEMENT MARKING & SIGNING  
 US ROUTE 34**  
 SCALE: 1" = 50'  
 SHEET NO. 1 OF 24 SHEETS  
 STA. 504+00 TO STA. 534+00

| F.A.P. RTE.               | SECTION   | COUNTY    | TOTAL SHEETS | SHEET NO. |
|---------------------------|-----------|-----------|--------------|-----------|
| 313                       | 7-2 ; 6-1 | HENDERSON | 976          | 389       |
| CONTRACT NO. 68409        |           |           |              |           |
| ILLINOIS FED. AID PROJECT |           |           |              |           |