

PAVEMENT MARKING LEGEND

- ① MODIFIED URETHANE PAVEMENT MARKING - LETTERS & SYMBOLS
- ② MODIFIED URETHANE PAVEMENT MARKING - LINE 4" WHITE SOLID
- ③ MODIFIED URETHANE PAVEMENT MARKING - LINE 4" YELLOW SOLID
- ④ MODIFIED URETHANE PAVEMENT MARKING - LINE 4" YELLOW SOLID (DOUBLE LINE)
- ⑤ MODIFIED URETHANE PAVEMENT MARKING - LINE 4" YELLOW SKIP DASH
- ⑥ PREFORMED PLASTIC PAVEMENT MARKING - LINE 6" WHITE SKIP DASH
- ⑦ MODIFIED URETHANE PAVEMENT MARKING - LINE 8" WHITE SOLID
- ⑧ MODIFIED URETHANE PAVEMENT MARKING - LINE 8" WHITE DOTTED
- ⑨ MODIFIED URETHANE PAVEMENT MARKING - LINE 12" WHITE SOLID
- ⑩ MODIFIED URETHANE PAVEMENT MARKING - LINE 12" YELLOW SOLID
- ⑪ MODIFIED URETHANE PAVEMENT MARKING - LINE 24" WHITE SOLID (STOP BAR)

• PAVEMENT MARKING SHALL BE IN ACCORDANCE WITH DISTRICT CADD STANDARDS - 780001-D4

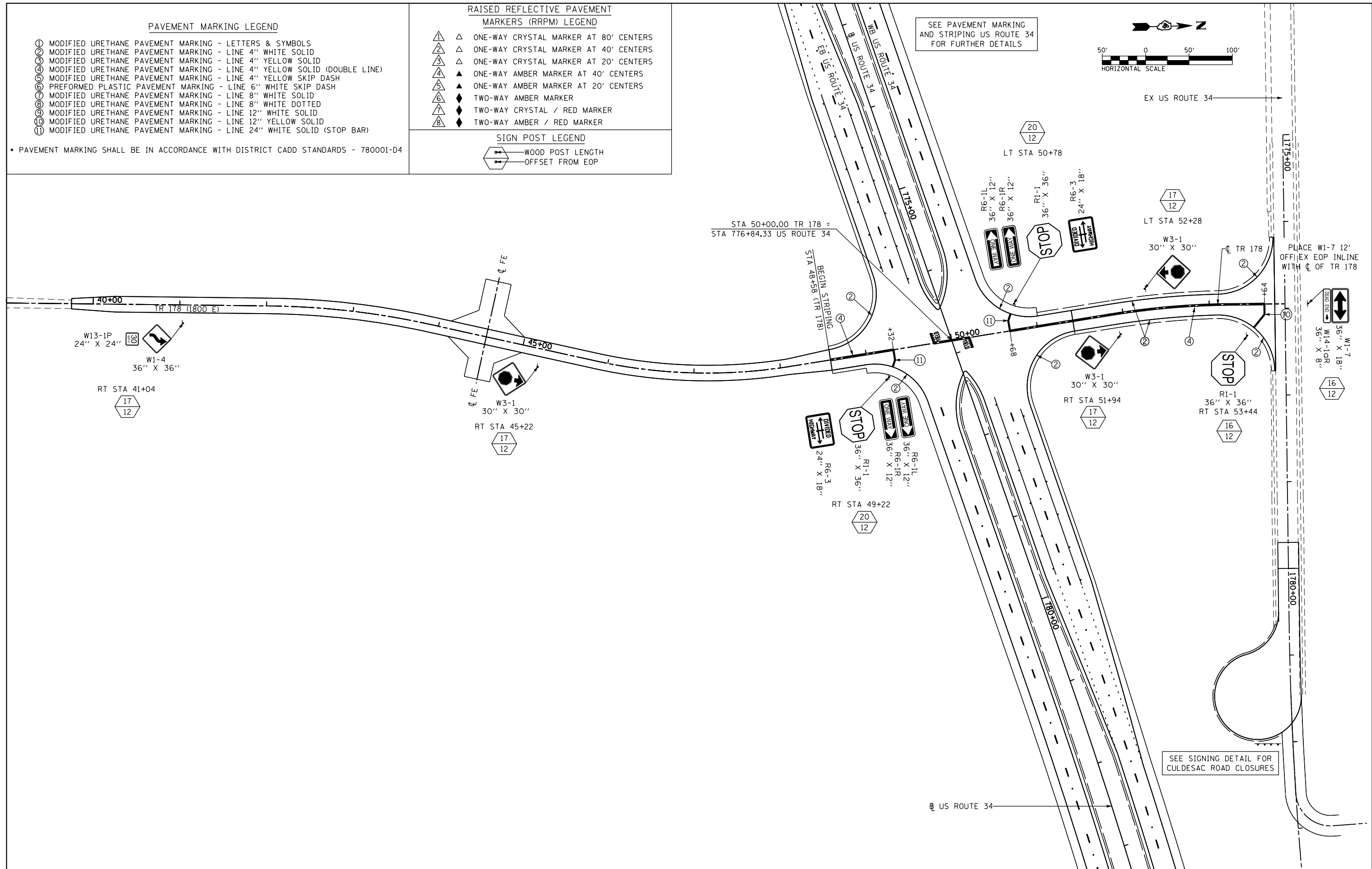
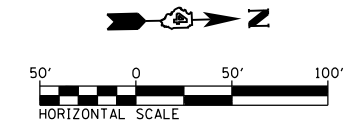
RAISED REFLECTIVE PAVEMENT MARKERS (RRPM) LEGEND

- △ ONE-WAY CRYSTAL MARKER AT 80' CENTERS
- △ ONE-WAY CRYSTAL MARKER AT 40' CENTERS
- △ ONE-WAY CRYSTAL MARKER AT 20' CENTERS
- ▲ ONE-WAY AMBER MARKER AT 40' CENTERS
- ▲ ONE-WAY AMBER MARKER AT 20' CENTERS
- ◆ TWO-WAY AMBER MARKER
- ◆ TWO-WAY CRYSTAL / RED MARKER
- ◆ TWO-WAY AMBER / RED MARKER

SIGN POST LEGEND

- WOOD POST LENGTH
- OFFSET FROM EOP

SEE PAVEMENT MARKING AND STRIPING US ROUTE 34 FOR FURTHER DETAILS



FILE NAME = D468409-SHT-23-PMK-TR178-01.dgn	USER NAME = zachl	DESIGNED - DBS	REVISED -
		DRAWN - PSBA	REVISED -
	PLOT SCALE = 100.0000' / in.	CHECKED - CSB	REVISED -
	PLOT DATE = 10/16/2012	DATE - 10/2012	REVISED -

STATE OF ILLINOIS
DEPARTMENT OF TRANSPORTATION

PAVEMENT MARKING AND SIGNING
TR 178 (1800 E)

SCALE: 1" = 50' SHEET NO. 23 OF 24 SHEETS STA. 39+00 TO STA. 53+86.60

F.A.P. RTE.	SECTION	COUNTY	TOTAL SHEETS	SHEET NO.
313	7-2 ; 6-1	HENDERSON	976	411
CONTRACT NO. 68409				
ILLINOIS FED. AID PROJECT				