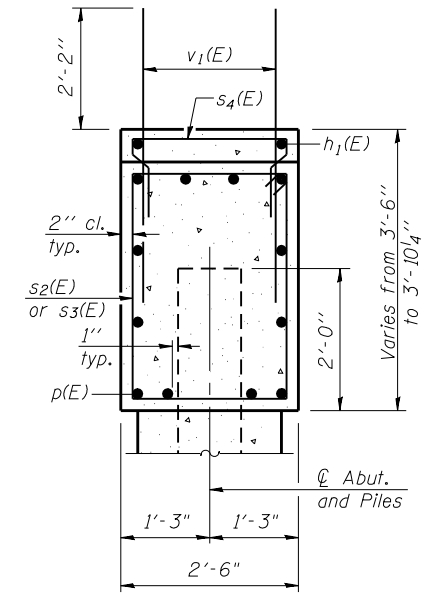
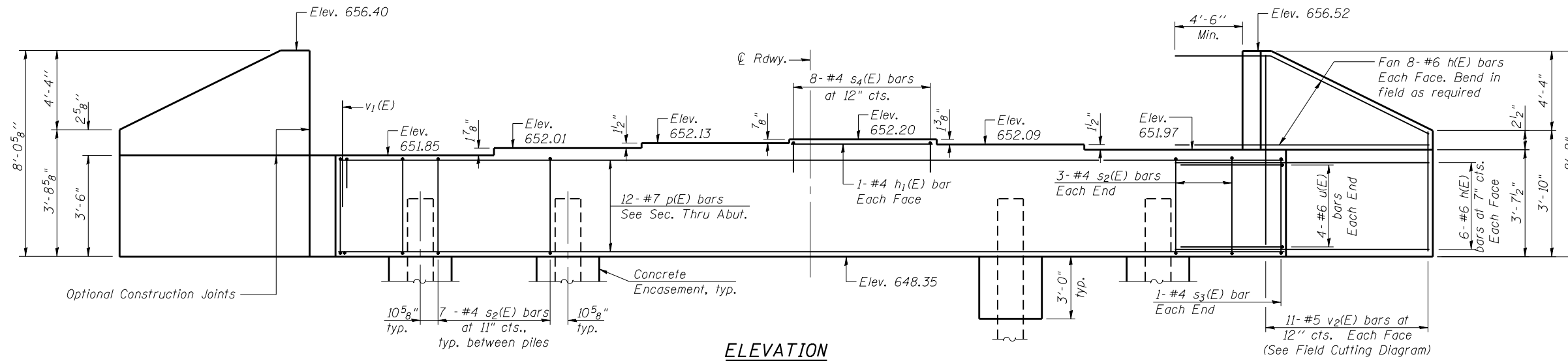
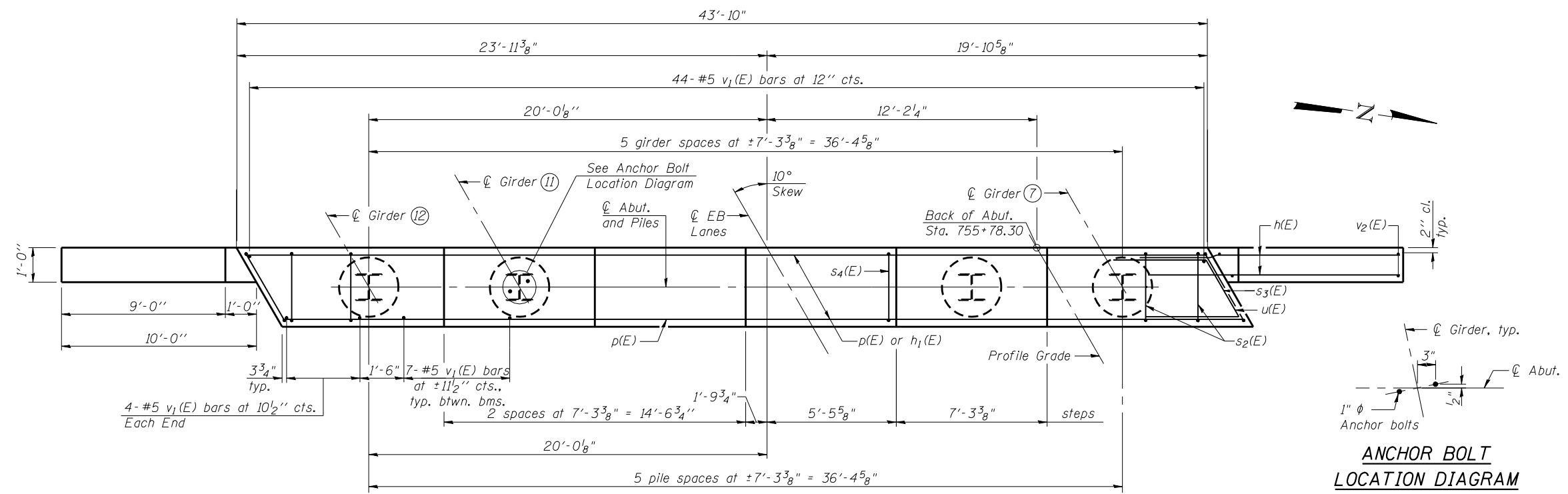


Notes:
Four steps monolithically with cap.



SEC. THRU ABUT.



PLAN

BILL OF MATERIAL

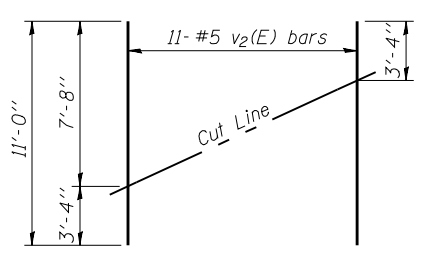
Bar	No.	Size	Length	Shape
h(E)	56	#6	14'-4"	—
h1(E)	2	#4	7'-0"	—
p(E)	12	#7	43'-6"	—
s2(E)	41	#4	11'-5"	□
s3(E)	2	#4	11'-6"	□
s4(E)	8	#4	6'-2"	□
u(E)	8	#6	11'-0"	┘
v1(E)	87	#5	4'-4"	—
v2(E)	22	#5	11'-0"	—
Structure Excavation		Cu. Yd.	107	
Concrete Structures		Cu. Yd.	19.6	
Reinforcement Bars, Epoxy Coated		Pound	3420	
Furnishing Steel Piles HP 14x73		Foot	345	
Driving Piles		Foot	345	
Test Pile HP 14x73		Each	1	
Concrete Encasement		Cu. Yd.	3.3	
Pile Shoes		Each	6	

For details of piles and Concrete Encasement, see sheet 38 of 45.

PILE DATA

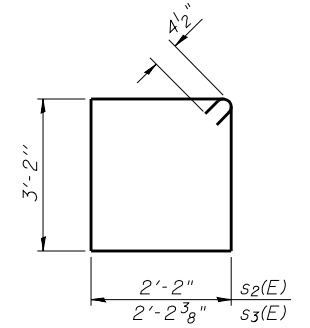
Type: HP 14x73 with piles shoes
Nominal Required Bearing: 578k
Factored Resistance Available: 257k
Est. Length: 69'
No. Production Piles: 5
No. Test Piles: 1

Note:
Piles shall be driven thru 24" φ precored holes extending to elevation 637.0 according to Article 512.09c of the Standard Specifications. Cost included in driving piles.

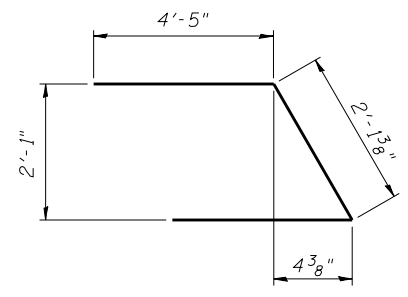


FIELD CUTTING DIAGRAM

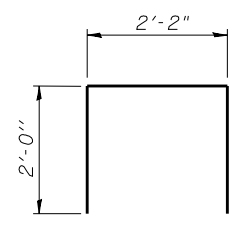
Order v2(E) full length. Cut as shown and use remainder of bars in opposite face.



BARS s2(E) & s3(E)



BAR u(E)



BARS s4(E)

ANCHOR BOLT LOCATION DIAGRAM

FILE NAME: \\0663-78134-032-N_Abu.L.EB.dgn
CB PROJECT NO. 04065

AI-L
Coombe-Bloxdorf P.C.
CIVIL ENGINEERS-
STRUCTURAL ENGINEERS-
LAND SURVEYORS
Design Firm License No. 184-002703

USER NAME = .MML	DESIGNED - CME	REVISED -
PLOT SCALE = 0.1667' / IN.	CHECKED - MCB	REVISED -
PLOT DATE = 10/16/2012	DRAWN - MML	REVISED -
	CHECKED - MCB	REVISED -

STATE OF ILLINOIS
DEPARTMENT OF TRANSPORTATION

WEST ABUTMENT
STRUCTURE NO. 036-0062 (E.B.)

SHEET NO. 32 OF 45 SHEETS

F.A.P. RTE.	SECTION	COUNTY	TOTAL SHEETS	SHEET NO.
313	7-2, 6-1	HENDERSON	976	485
CONTRACT NO. 68409				
ILLINOIS FED. AID PROJECT				