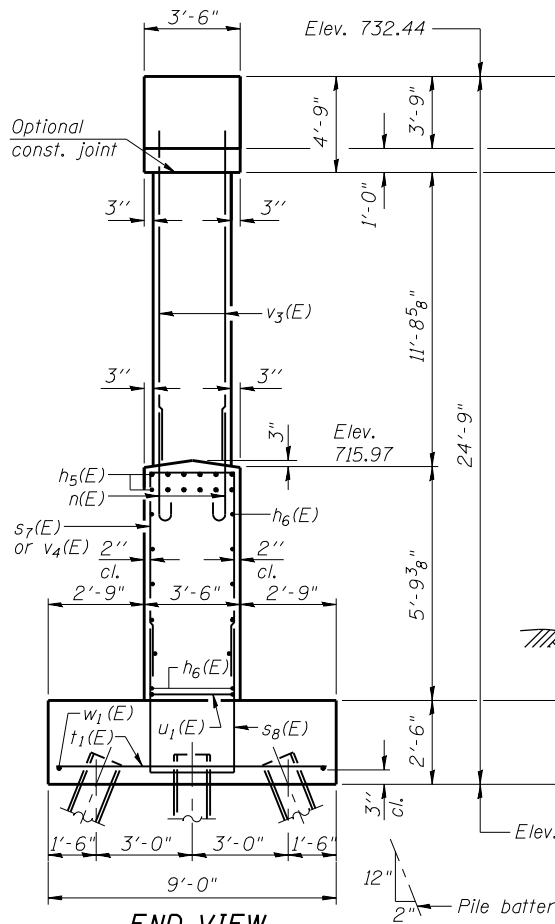
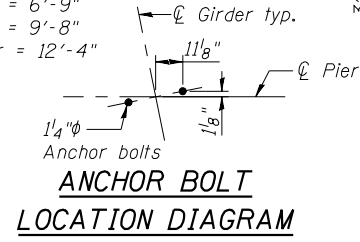


Notes:
 Space reinforcement in cap to miss anchor bolts.
 Pour steps monolithically with cap.
 For details of piles, see sheet 20 of 23.

MIN. BAR LAP

- #5 bar = 2'-11"
- #6 bar = 3'-10"
- #7 bar = 4'-2"
- #8 bar = 6'-9"
- #9 bar = 9'-8"
- #10 bar = 12'-4"



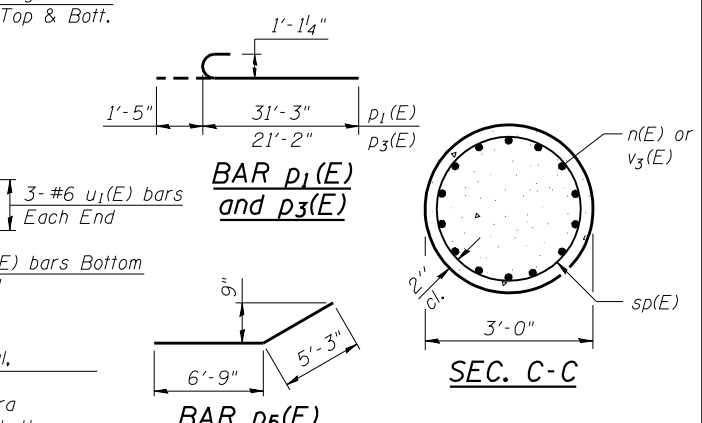
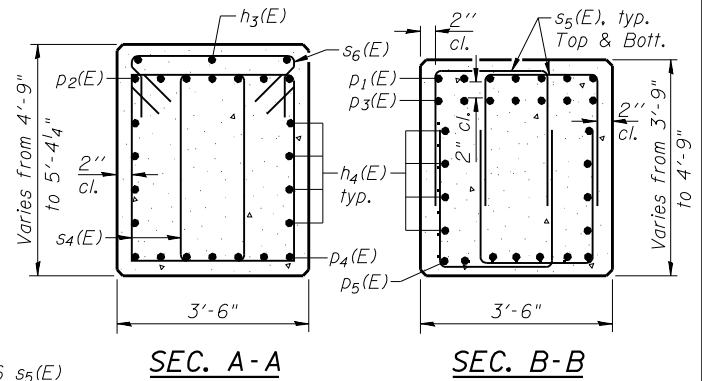
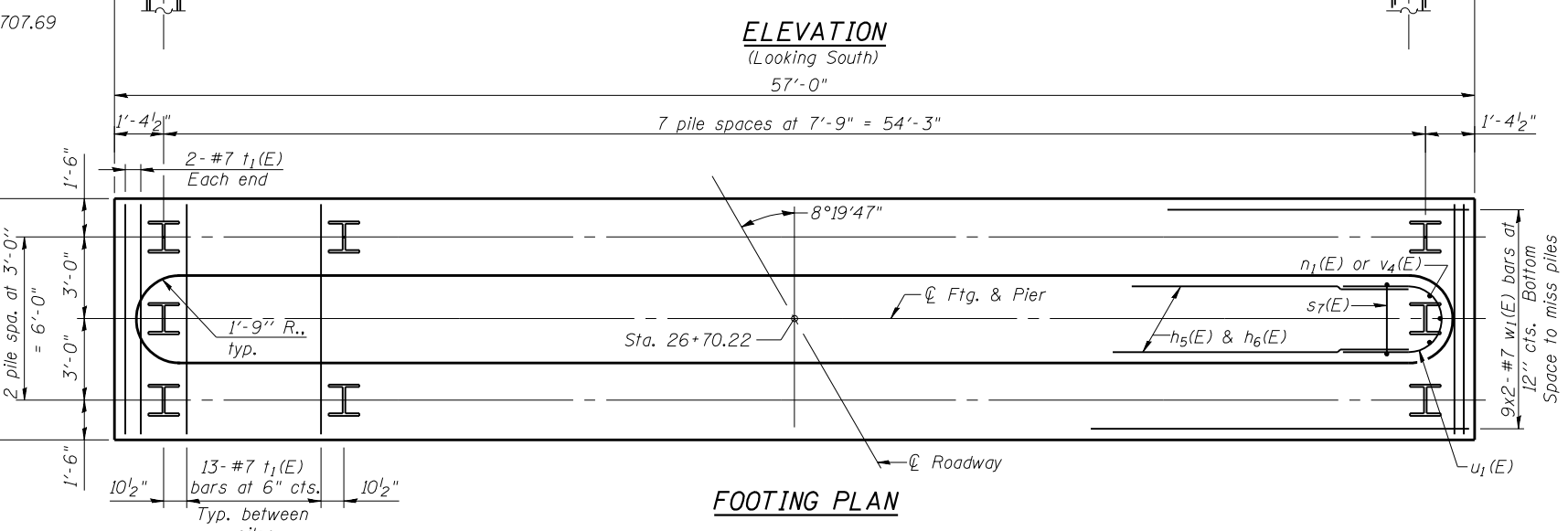
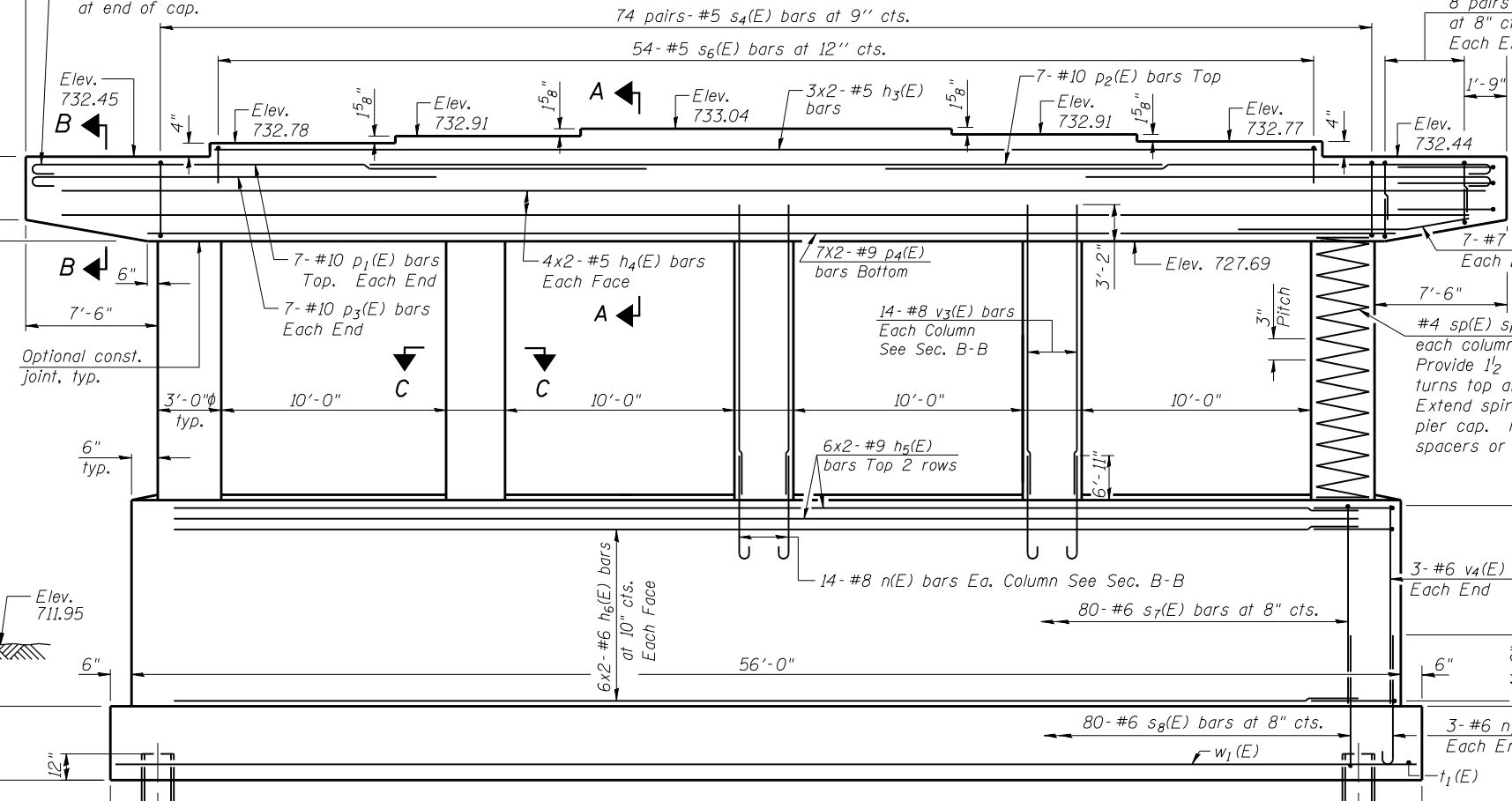
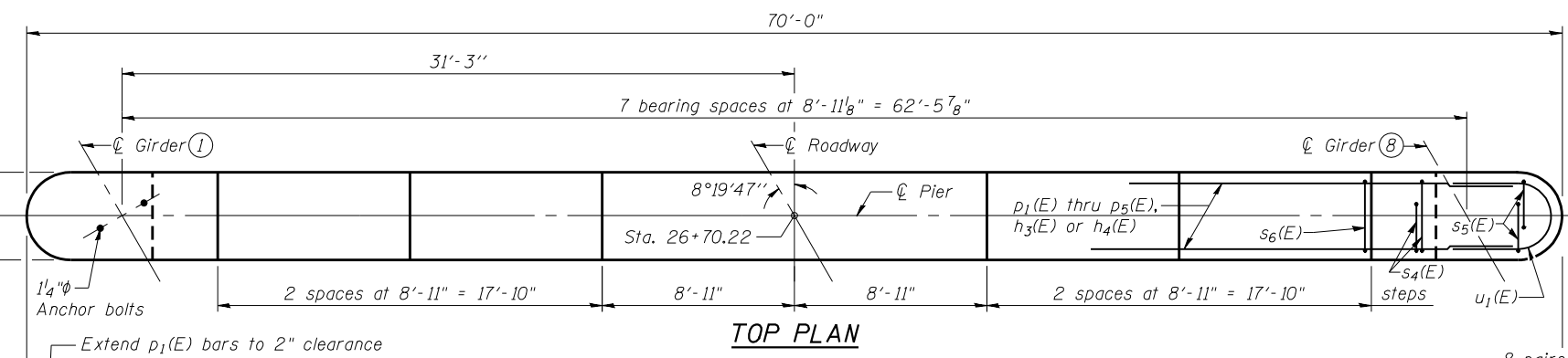
A & B DIMENSIONS

Bar	A	B
s ₅ (E)	2'-2"	3'-6"
s ₆ (E)	3'-2"	1'-11"
s ₇ (E)	3'-2"	5'-5"
s ₈ (E)	3'-2"	6'-3"

BARS s₅(E), s₆(E), s₇(E) and s₈(E)

PILE DATA

Type: Steel HP 14x89
 Nominal Required Bearing: 705
 Factored Resistance Available: 388
 Est. Length: 53'
 No. Production Piles: 24
 No. Test Piles: None required



BILL OF MATERIAL

Bar No.	Size	Length	Shape
h ₃ (E)	6 #5	28'-1"	—
h ₄ (E)	16 #5	34'-7"	—
h ₅ (E)	24 #9	32'-8"	—
h ₆ (E)	24 #6	28'-2"	—
n(E)	70 #8	10'-8"	—
n ₁ (E)	6 #6	6'-11"	—
p ₁ (E)	14 #10	32'-8"	—
p ₂ (E)	7 #10	32'-0"	—
p ₃ (E)	14 #10	22'-7"	—
p ₄ (E)	14 #9	32'-4"	—
p ₅ (E)	14 #7	12'-0"	—
s ₄ (E)	148 #5	14'-1"	□
s ₅ (E)	64 #6	9'-2"	□
s ₆ (E)	54 #5	7'-0"	□
s ₇ (E)	80 #6	14'-0"	□
s ₈ (E)	80 #6	15'-8"	□
sp(E)	5 #4	12'-0"	⋈
t ₁ (E)	95 #7	8'-8"	—
u ₁ (E)	22 #6	13'-10"	—
v ₃ (E)	70 #8	14'-9"	—
v ₄ (E)	6 #6	5'-5"	—
w ₁ (E)	18 #7	30'-7"	—

** Length is height of spiral.

FILE NAME = 68409-019-11-11.dgn
 CB PROJECT NO. 04065

P-26 7-1-10

Coombe-Bloxdorf P.C.
 CIVIL ENGINEERS-
 STRUCTURAL ENGINEERS-
 LAND SURVEYORS
 Design Firm License No. 184-002703

DESIGNED - RKM	REVISD -
CHECKED -	REVISD -
DRAWN - MML	REVISD -
CHECKED - MCB	REVISD -

STATE OF ILLINOIS
DEPARTMENT OF TRANSPORTATION

PIER
STRUCTURE NO. 036-0065
 SHEET NO. 19 OF 23 SHEETS

F.A.P. RTE.	SECTION	COUNTY	TOTAL SHEETS	SHEET NO.
534	7-2, 6-1	HENDERSON	976	517

CONTRACT NO. 68409
 ILLINOIS FED. AID PROJECT