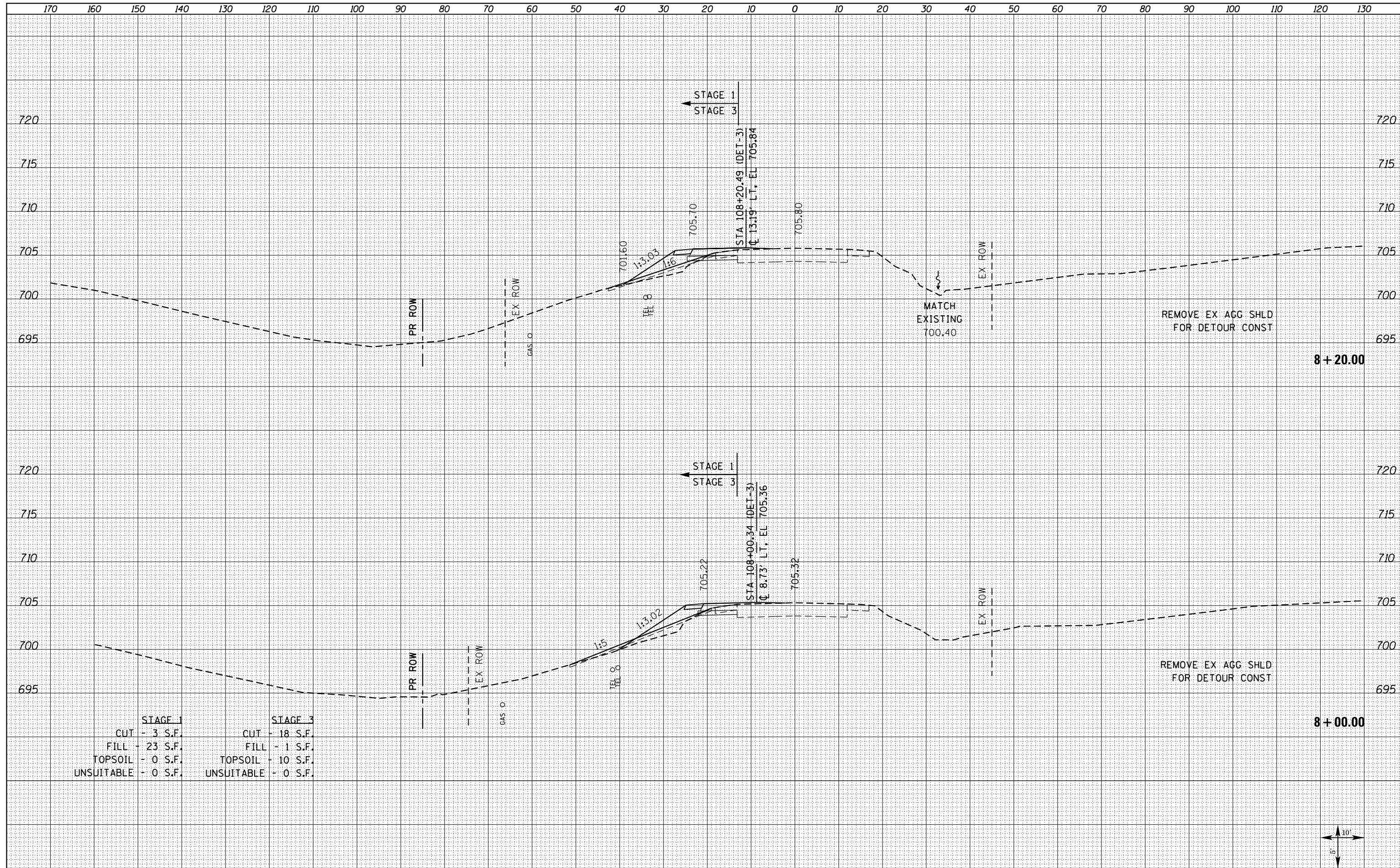


DATE	
BY	
FINAL SURVEY	SURVEYED
NOTE BOOK	PLOTTED
NO.	TEMPLATE
	AREAS CHECKED

DATE	
BY	
ORIGINAL SURVEY	SURVEYED
NOTE BOOK	PLOTTED
NO.	TEMPLATE
	AREAS CHECKED



STAGE 1		STAGE 3	
CUT	- 3 S.F.	CUT	- 18 S.F.
FILL	- 23 S.F.	FILL	- 1 S.F.
TOPSOIL	- 0 S.F.	TOPSOIL	- 10 S.F.
UNSUITABLE	- 0 S.F.	UNSUITABLE	- 0 S.F.

FILE NAME = D468409-SHT-XSHT-IL 94-1500E.dgn

USER NAME = zechl	DESIGNED - DBS	REVISED -
	DRAWN - PSBA	REVISED -
PLOT SCALE = 20.0000' / in.	CHECKED - CSB	REVISED -
PLOT DATE = 10/16/2012	DATE - 10/2012	REVISED -

**STATE OF ILLINOIS
DEPARTMENT OF TRANSPORTATION**

**CROSS SECTIONS
IL ROUTE 94 /116**

SCALE: NOTED SHEET NO. 2 OF 33 SHEETS STA. 8+00.00 TO STA. 8+20.00

F.A.P. RTE.	SECTION	COUNTY	TOTAL SHEETS	SHEET NO.
313	7-2 ; 6-1	HENDERSON	976	830
CONTRACT NO. 68409				
ILLINOIS FED. AID PROJECT				