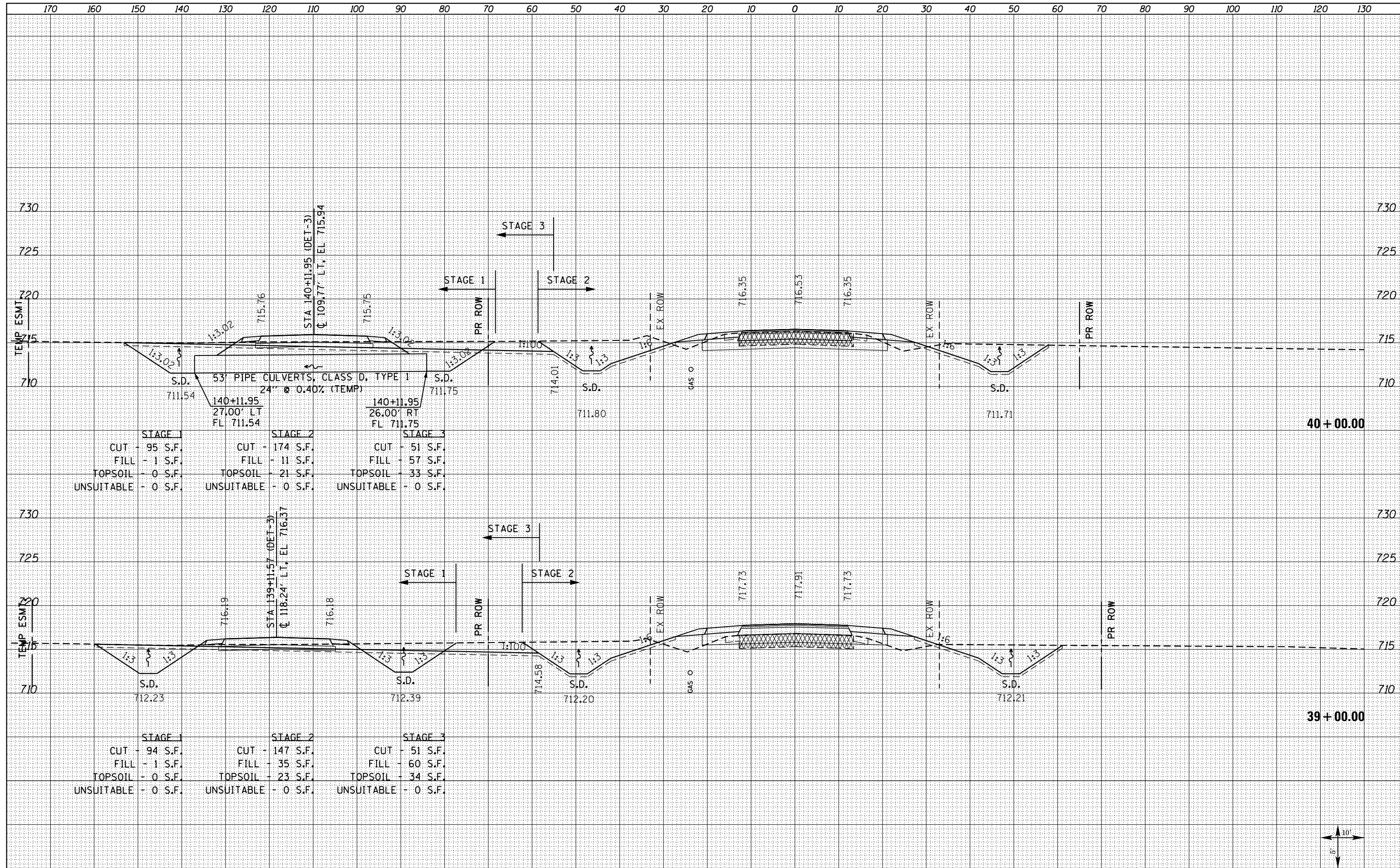


BY	DATE

ORIGINAL SURVEY	SURVEYED	DATE
NOTE BOOK	PLOTTED	
	TEMPLATE	
	AREAS	CHECKED



FILE NAME = D468409-SHT-XSSHT-IL 94-1500E.dgn

USER NAME = zachl	DESIGNED - DBS	REVISED -
	DRAWN - PSBA	REVISED -
	CHECKED - CSB	REVISED -
	DATE - 10/2012	REVISED -

**STATE OF ILLINOIS
DEPARTMENT OF TRANSPORTATION**

**CROSS SECTIONS
IL ROUTE 94 /116**
SCALE: NOTED SHEET NO. 28 OF 33 SHEETS STA. 39+00.00 TO STA. 40+00.00

F.A.P. RTE.	SECTION	COUNTY	TOTAL SHEETS	SHEET NO.
313	7-2 ; 6-1	HENDERSON	976	856
CONTRACT NO. 68409			ILLINOIS FED. AID PROJECT	

