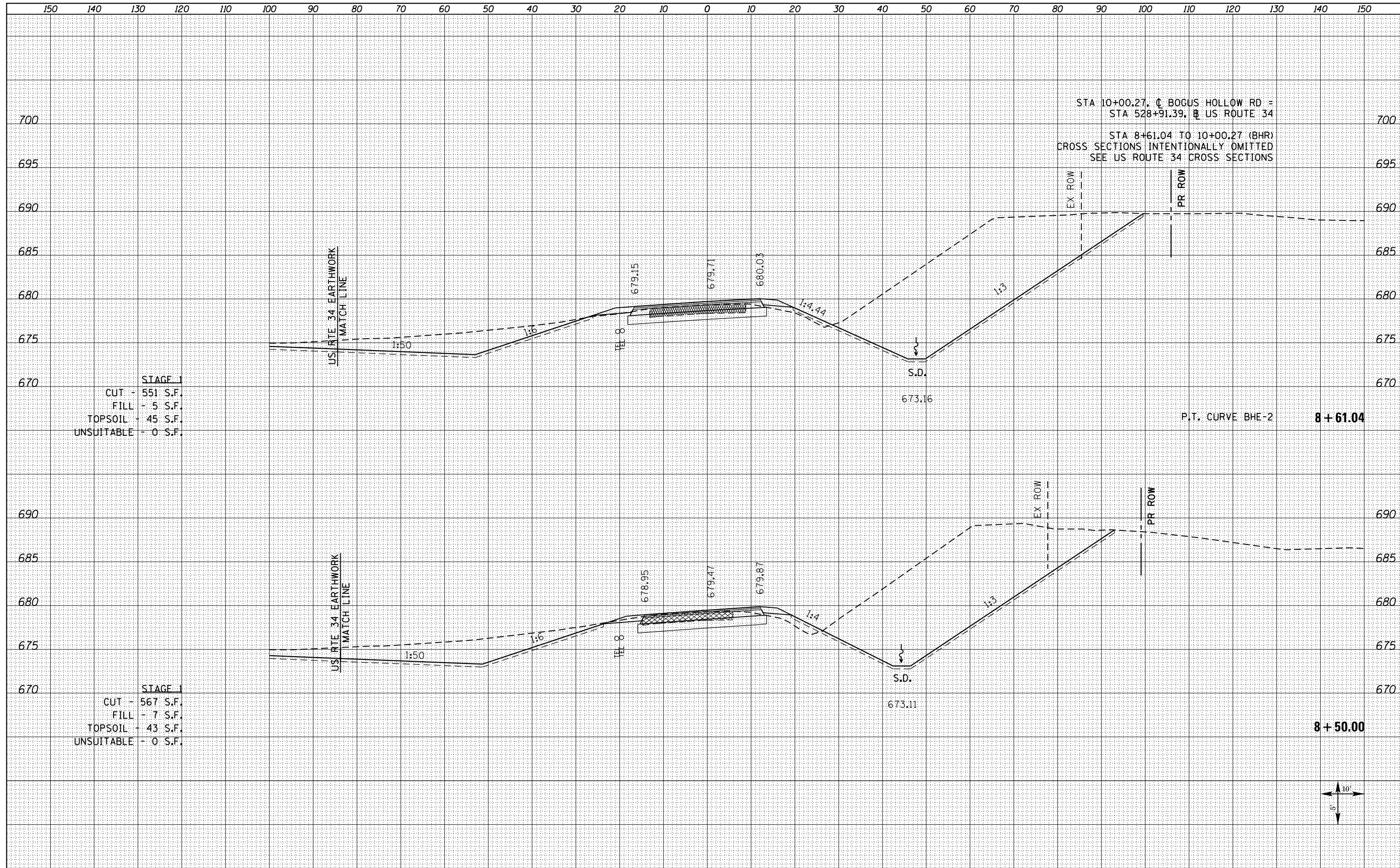


DATE	
BY	
FINAL SURVEY	SURVEYED
NOTE BOOK	PLOTTED
NO.	TEMPLATE
	AREAS CHECKED

DATE	
BY	
ORIGINAL SURVEY	SURVEYED
NOTE BOOK	PLOTTED
NO.	TEMPLATE
	AREAS CHECKED



STAGE 1  
 CUT - 551 S.F.  
 FILL - 5 S.F.  
 TOPSOIL - 45 S.F.  
 UNSUITABLE - 0 S.F.

STAGE 1  
 CUT - 567 S.F.  
 FILL - 7 S.F.  
 TOPSOIL - 43 S.F.  
 UNSUITABLE - 0 S.F.

FILE NAME =  
 D468409-SHT-XSSHT-BHR-1350E-S.dgn

USER NAME = zechl	DESIGNED - DBS	REVISED -
	DRAWN - PSBA	REVISED -
PLOT SCALE = 20.0000' / in.	CHECKED - CSB	REVISED -
PLOT DATE = 10/16/2012	DATE - 10/2012	REVISED -

STATE OF ILLINOIS  
 DEPARTMENT OF TRANSPORTATION

CROSS SECTIONS  
 BOGUS HOLLOW ROAD SOUTH  
 SCALE: NOTED SHEET NO. 6 OF 6 SHEETS STA. 8+50.00 TO STA. 8+61.04

F.A.P. RTE.	SECTION	COUNTY	TOTAL SHEETS	SHEET NO.
313	7-2 ; 6-1	HENDERSON	976	919
CONTRACT NO. 68409				
ILLINOIS FED. AID PROJECT				