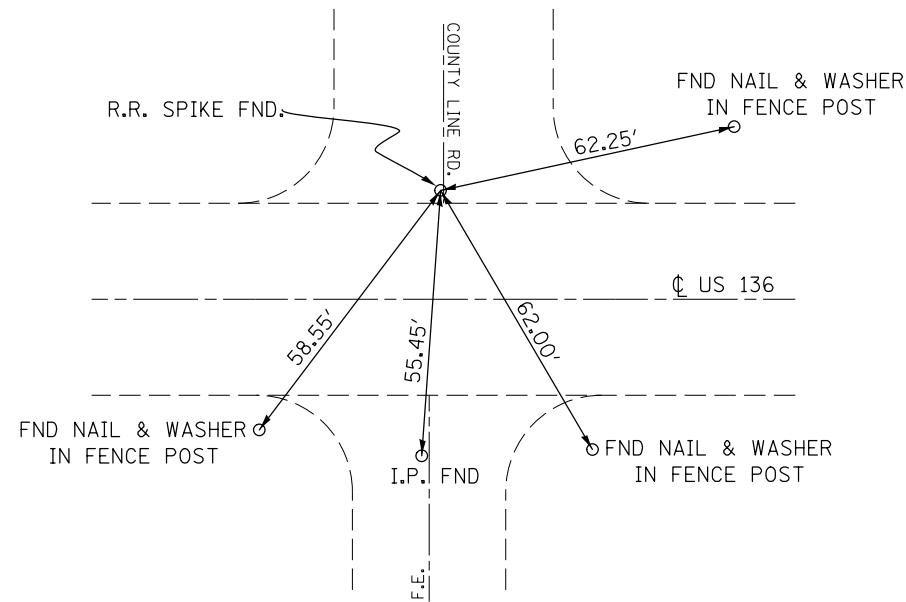
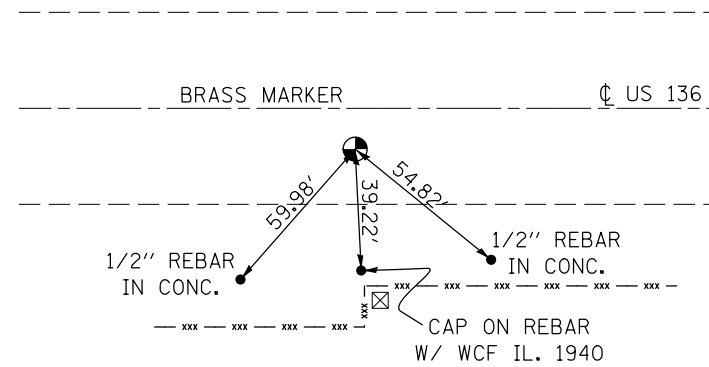


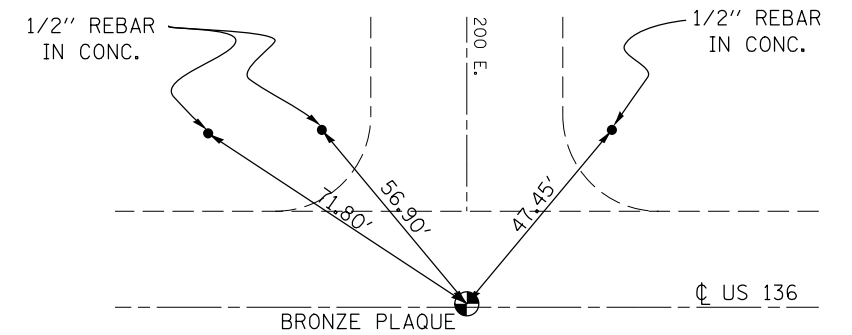
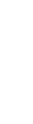
FOUND R.R. SPIKE
S.W. COR. SEC. 31
STA. 223 + 91.32, 15.12' LT



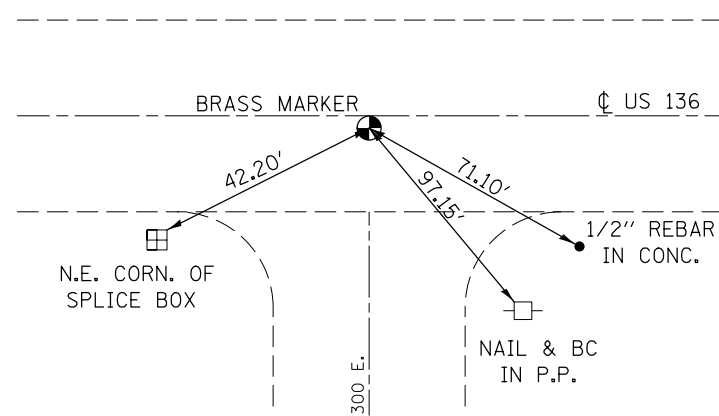
FOUND BRASS DISK
N.W. COR. SEC. 5
STA. 277 + 20.64, 5.26' RT



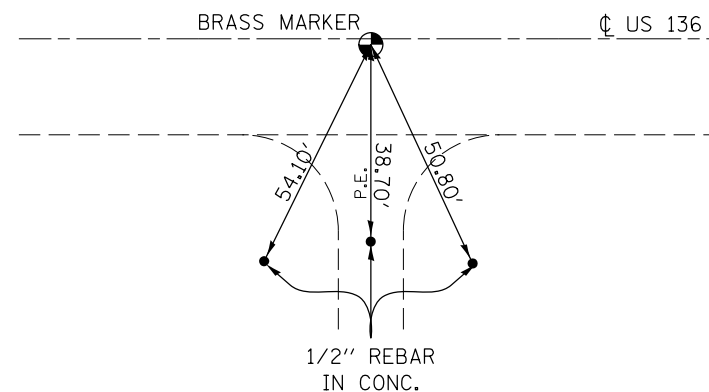
FOUND BRONZE PLAQUE
S.E. COR. SEC. 32
STA. 329 + 54.75, 0.06' LT



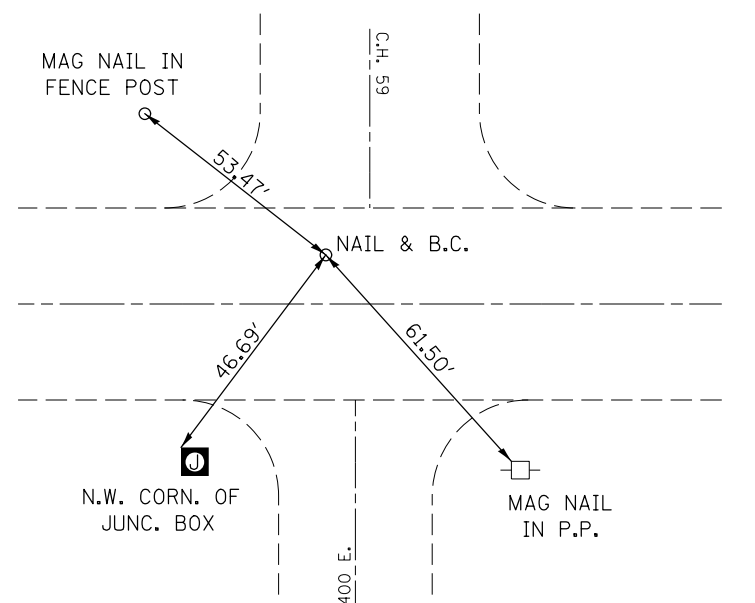
FOUND BRASS DISK
N.W. COR. SEC. 3
STA. 383 + 38.92, 1.15' RT



FOUND BRASS DISK
S. 1/4 COR. SEC. 34
STA. 409 + 19.93, 0.77' RT



FOUND NAIL & B.C.
S.E. COR. SEC. 34
STA. 435 + 95.45, 7.01' LT



FILE NAME =	USER NAME = oglebj	DESIGNED -	REVISED -
ei:\pw\work\p\idot\oglebj\d0244982\0570783-sh1-ATB.dgn		DRAWN -	REVISED -
	PLOT SCALE = 40.0000' / in.	CHECKED -	REVISED -
	PLOT DATE = 10/9/2012	DATE -	REVISED -

STATE OF ILLINOIS
DEPARTMENT OF TRANSPORTATION

SURVEY MONUMENT TIE POINTS

SCALE: SHEET NO. OF SHEETS STA. TO STA.

F.A.P. RTE.	SECTION	COUNTY	TOTAL SHEETS	SHEET NO.
315	119RS-4, 18RS & (57-10)RS	MCLEAN	225	25
CONTRACT NO. 70783				
ILLINOIS FED. AID PROJECT				