

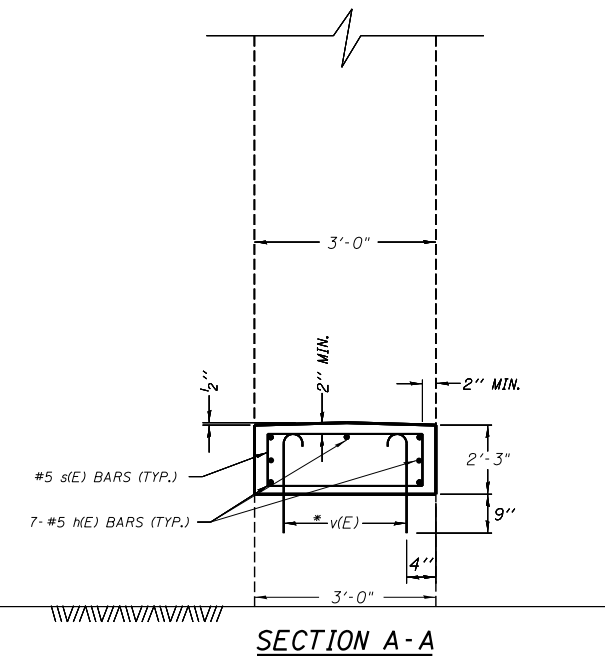
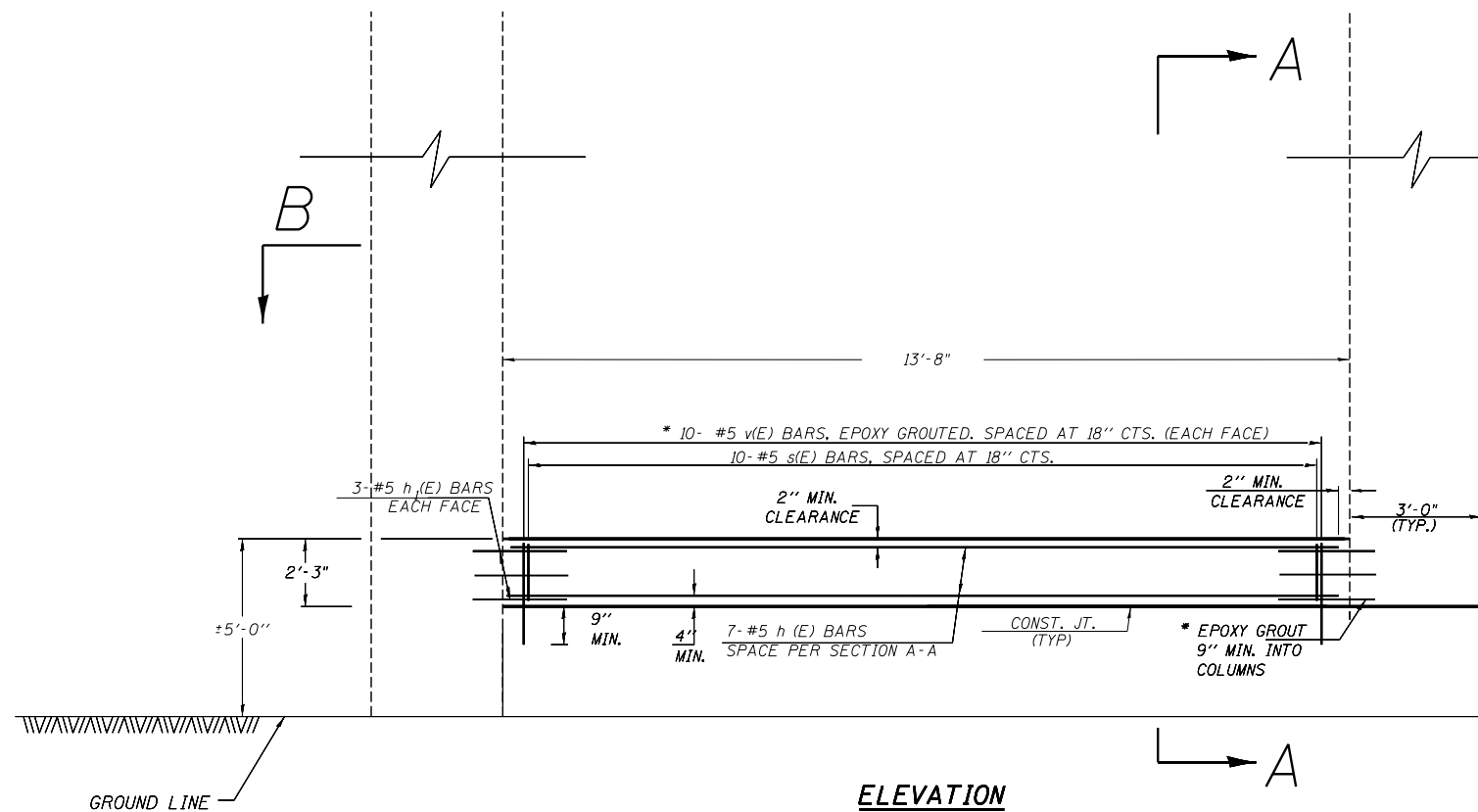
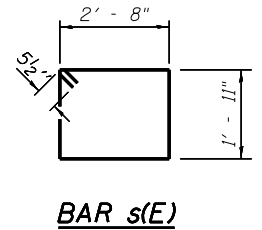
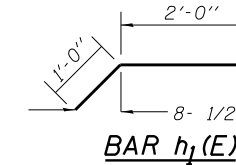
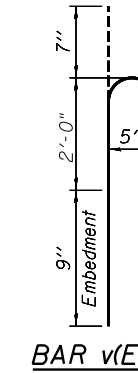
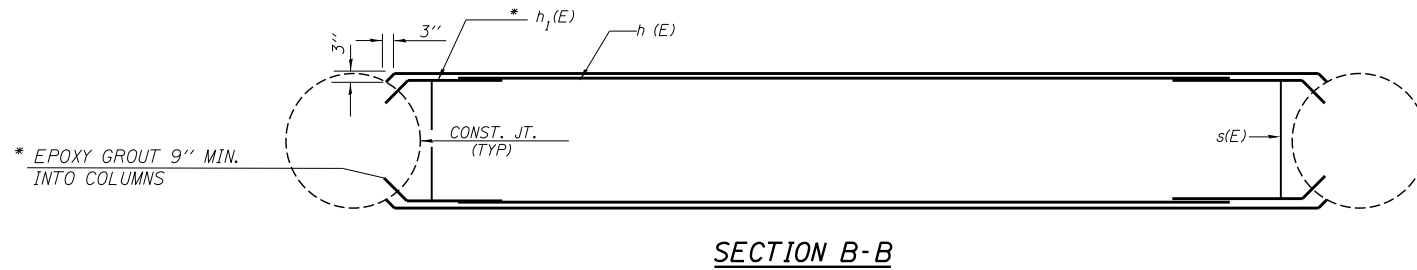
S.N. 057-0116

MEDIAN PIER CRASHWALL EXTENSION

GENERAL NOTES

REINFORCEMENT BARS DESIGNATED (E) SHALL BE EPOXY COATED.  
 PLAN DIMENSIONS AND DETAILS RELATIVE TO EXISTING PLANS ARE SUBJECT TO NOMINAL CONSTRUCTION VARIATIONS. THE CONTRACTOR SHALL FIELD VERIFY EXISTING DIMENSIONS AND DETAILS AFFECTING NEW CONSTRUCTION AND MAKE NECESSARY APPROVED ADJUSTMENTS PRIOR TO CONSTRUCTION OR ORDERING OF MATERIALS. SUCH VARIATIONS SHALL NOT BE CAUSE FOR ADDITIONAL COMPENSATION FOR A CHANGE IN SCOPE OF THE WORK, HOWEVER, THE CONTRACTOR WILL BE PAID FOR THE QUANTITY ACTUALLY FURNISHED AT THE UNIT PRICE BID FOR THE WORK.

THE COST OF EPOXY GROUTING BARS SHALL BE INCLUDED WITH REINFORCEMENT BARS (EPOXY COATED).



BILL OF MATERIALS

Bar	No.	Size	Length	Shape	
h(E)	7	#5	13' - 4"	—	
h <sub>1</sub> (E)	12	#5	3' - 0"	┌	
s(E)	10	#5	10'-1"	□	
v(E)	20	#5	3' - 4"	┌	
CONCRETE STRUCTURES				CU. YD.	3.6
REINFORCEMENT BARS, EPOXY COATED				LB.	310

\* EPOXY GROUT h<sub>1</sub>(E) AND v(E) BARS IN 9" MIN. HOLES ACCORDING TO ARTICLE 584 OF THE STANDARD SPECIFICATIONS.

CRASHWALL EXTENSION  
 PIER 2  
 SN 057-0116