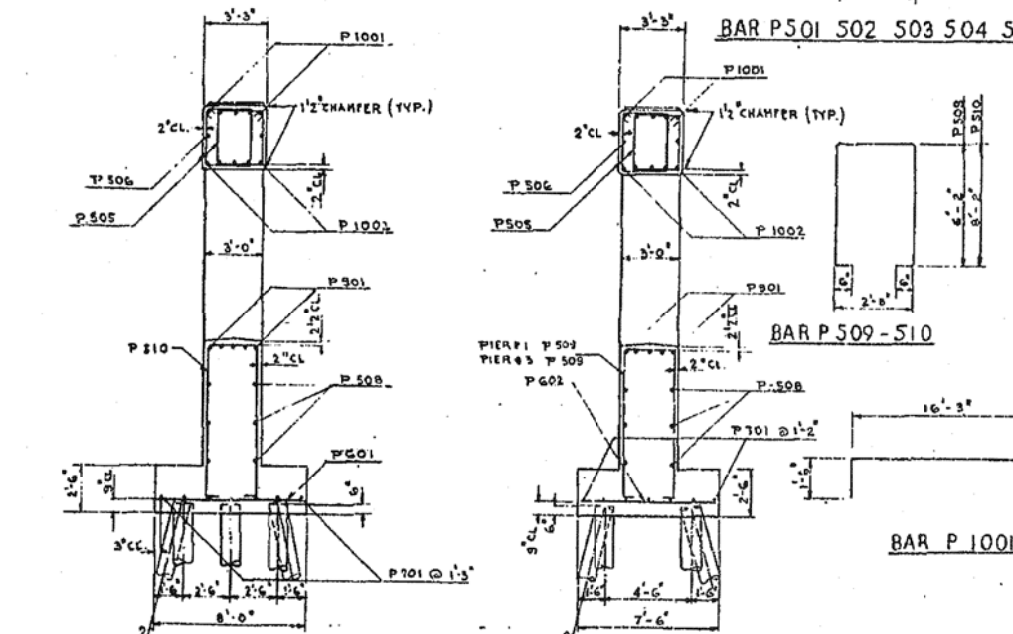
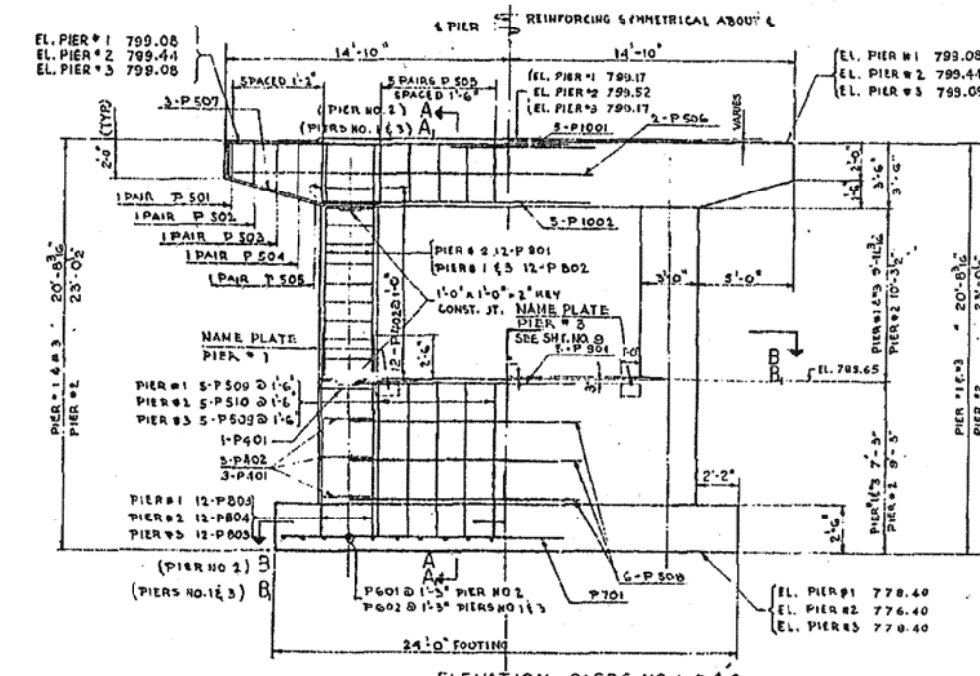
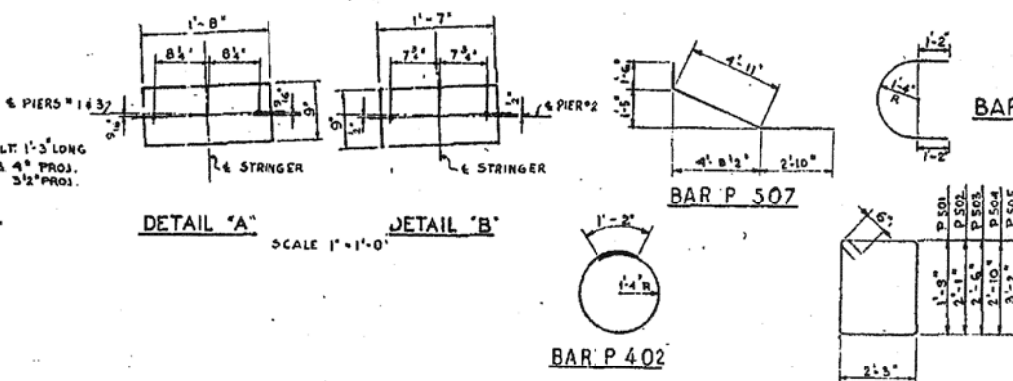
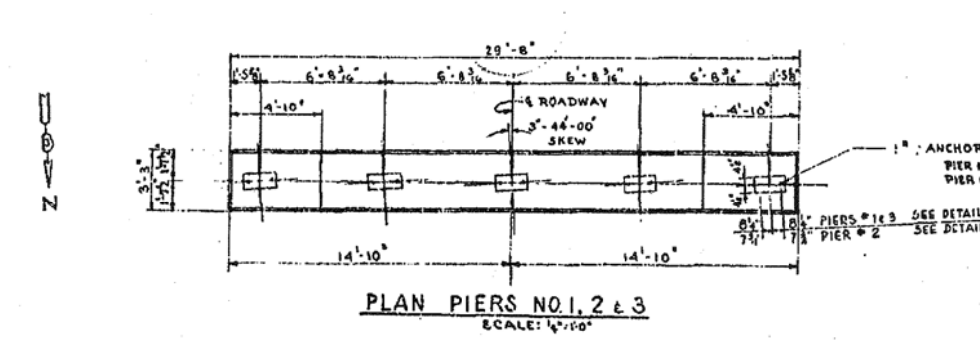
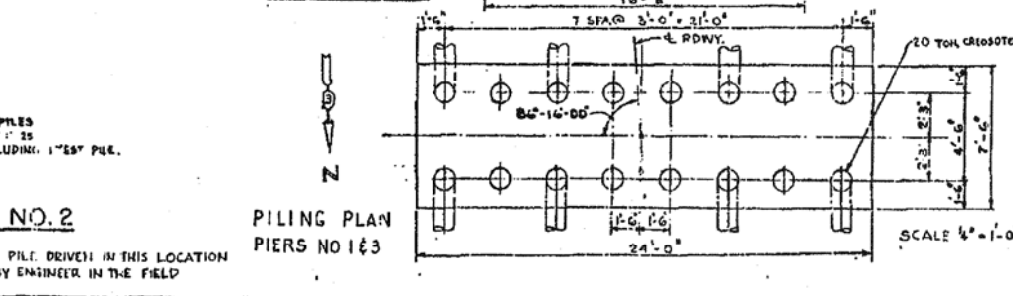
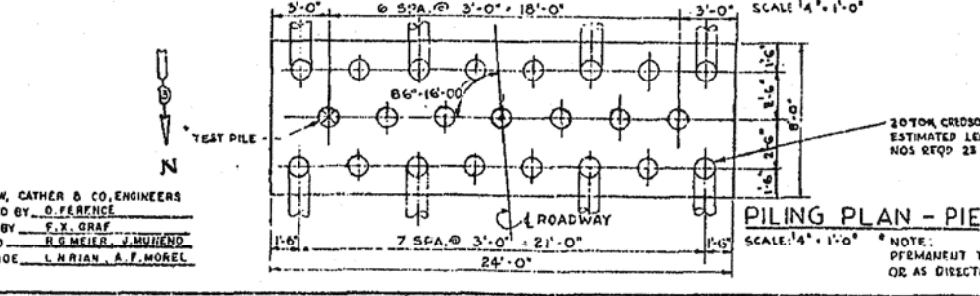
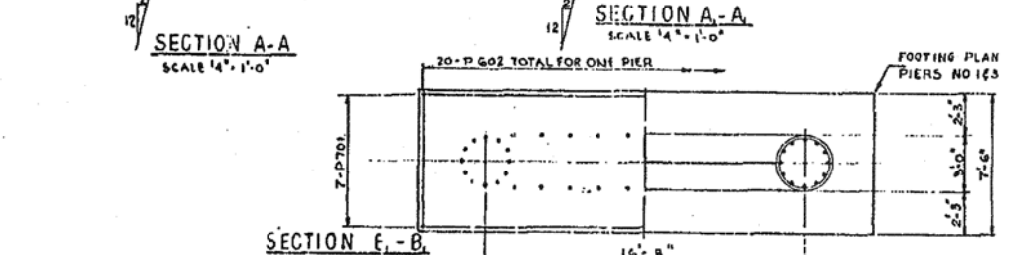
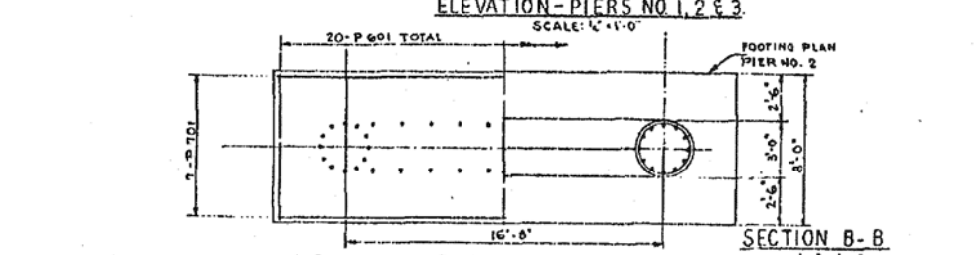


DATE	SECTION	COUNTY	TOTAL SHEETS	SHEET NO.
F.A.I. 74	57-201	MCLAN	33	13
ILLINOIS FEDERAL PROJECT				



BAR NO	SIZE	LENGTH	SHAPE	WEIGHT
P401	24	4	6'-6"	104
P402	30	4	9'-4"	522
P501	12	5	9'-0"	112
P502	12	5	8'-8"	121
P503	12	5	10'-6"	131
P504	12	5	11'-2"	140
P505	12	5	11'-10"	149
P506	6	5	29'-4"	183
P507	18	5	9'-3"	174
P508	18	5	16'-6"	310
P509	20	5	16'-0"	334
P510	10	5	20'-0"	209
P601	20	6	7'-9"	230
P602	40	6	7'-2"	430
P701	21	7	23'-0"	1016
P801	34	8	13'-7"	670
P802	48	8	13'-3"	1698
P803	48	8	9'-0"	1154
P804	24	8	11'-0"	708
P901	15	8	16'-0"	642
P1001	30	10	17'-9"	2201
P1002	15	10	18'-3"	1242



ITEM	UNIT	QUANTITY
CLASS A EXCAVATION FOR STRUCTURES	CU.YD	79.0
CLASS X CONCRETE	CU.YD	137.5
REINFORCEMENT BARS	POUND	13740
FURNISHING CREOSOTED PILES UP TO 30'	LIN.FT.	288
FURNISHING CREOSOTED PILES 30' TO 38'	LIN.FT.	950
TEST PILES (CREOSOTED)	EACH	1
DRIVING TIMBER PILES	LIN.FT.	1238
NAME PLATES	EACH	2

20 TON CREOSOTED PILES
 18'-0" LONG PIER #1 ESTIMATED LENGTH
 25'-0" LONG PIER #3
 NOS. REQD PIER #1: 16 PILES
 PIER #3: 16 PILES

PIERS
 E.A.I. 74 SECTION 57-20 HB-2
 F.A.I. 74 UNDER MORRIS AVENUE
 MCLAN COUNTY
 STATION 679+59.01
 SCALE: AS NOTED DATE:

FILE NAME =	USER NAME = ceer-lockjd	DESIGNED -	REVISED -
ce:\pwwork\pwwork\ceer\lockjd\dms83233\072595-bridge.dgn	072595-bridge.dgn	DRAWN -	REVISED -
PLOT SCALE = 100.0000 / IN.		CHECKED -	REVISED -
PLOT DATE = 1/30/2001		DATE -	REVISED -

STATE OF ILLINOIS
DEPARTMENT OF TRANSPORTATION

EXISTING BRIDGE PLANS - INFORMATION ONLY
 SCALE: NA SHEET NO. 2 OF 3 SHEETS STA. TO STA.

F.A.I. RTE.	SECTION	COUNTY	TOTAL SHEETS	SHEET NO.
74	57-201 & 57-4.5, 61RS-3	MCLAN	160	98
CONTRACT NO. 70505				
ILLINOIS FED. AID PROJECT				

S.N. 057-0116

INFORMATION ONLY - PIER 2

FILE NAME =	USER NAME = leroyma	DESIGNED -	REVISED -
ce:\pwwork\pwwork\leroyma\d0316210\0571006-sht-details.dgn	0571006-sht-details.dgn	DRAWN -	REVISED -
PLOT SCALE = 40.0000 / IN.		CHECKED -	REVISED -
PLOT DATE = 10/15/2012		DATE -	REVISED -

STATE OF ILLINOIS
DEPARTMENT OF TRANSPORTATION

S.N. 057-0116
INFORMATION ONLY - PIER 2
 SCALE: SHEET NO. 1 OF 1 SHEETS STA. TO STA.

F.A.I. RTE.	SECTION	COUNTY	TOTAL SHEETS	SHEET NO.
74	(57-201)	MCLAN	13	9
CONTRACT NO. 71006				
ILLINOIS FED. AID PROJECT				