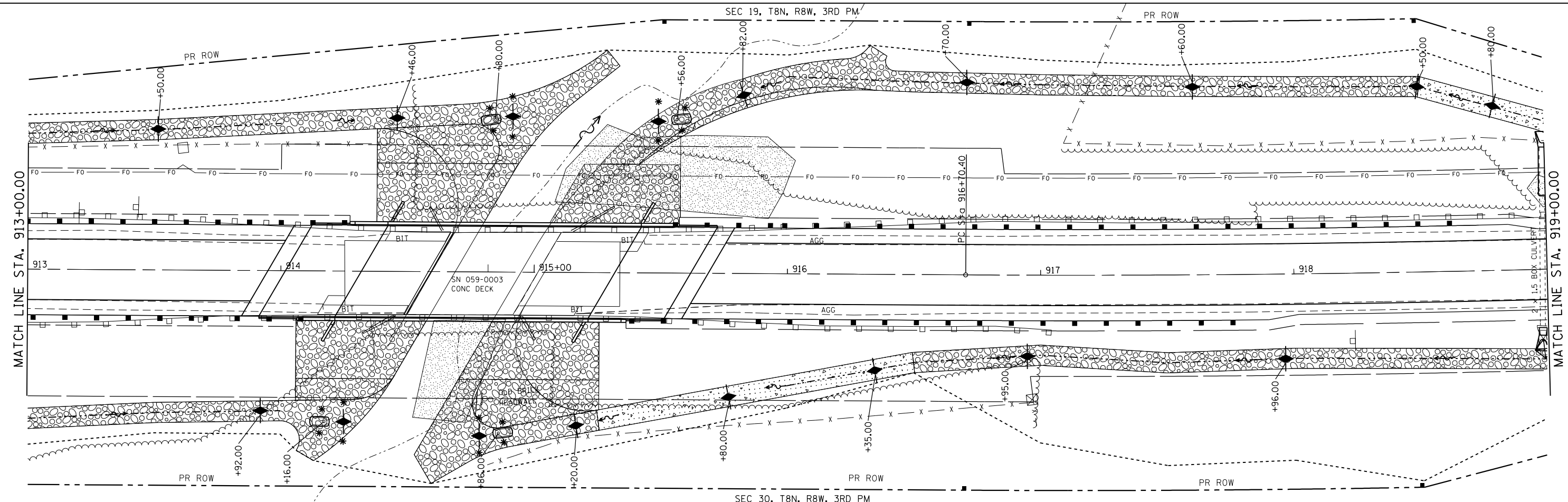


EXIST. CURVE 3500  
 PI STA. = 906+73.71  
 $\Delta = 8^\circ 08' 54''$  (RT)  
 $D = 0^\circ 48' 17''$   
 $R = 7,119.39'$   
 $T = 507.10'$   
 $L = 1,012.49'$   
 $E = 18.04'$   
 $e = 1.9\%$   
 $T.R. = 60$   
 $S.E. RUN = 88$   
 $P.C. STA. = 901+66.61$   
 $P.T. STA. = 911+79.10$

LEGEND

- INLET AND PIPE PROTECTION
- AGGREGATE DITCH CHECK
- SEDIMENT BASIN
- \* ITEM \* ITEM PLACED AT BEGINNING OF CONSTRUCTION (Requirement)



|                                                               |                                    |            |           |
|---------------------------------------------------------------|------------------------------------|------------|-----------|
| FILE NAME =                                                   | USER NAME = sparksgw               | DESIGNED - | REVISED - |
| et:\pw\work\p\midot\sparksgw\0325252\d672A19-sht-031-eros.dgn |                                    | DRAWN -    | REVISED - |
|                                                               | PLOT SCALE = 40.0000' / in.        | CHECKED -  | REVISED - |
|                                                               | PLOT DATE = Oct-19-2012 02:14:24PM | DATE -     | REVISED - |

STATE OF ILLINOIS  
 DEPARTMENT OF TRANSPORTATION

EROSION CONTROL PLAN - IL 16

SCALE: SHEET NO. 1 OF 2 SHEETS STA. 907+00 TO STA. 919+00

| F.A.P. RTE.                                   | SECTION | COUNTY   | TOTAL SHEETS | SHEET NO. |
|-----------------------------------------------|---------|----------|--------------|-----------|
| 325                                           | 116BR-1 | MACOUPIN | 67           | 31        |
| CONTRACT NO. 72A19                            |         |          |              |           |
| FED. ROAD DIST. NO. ILLINOIS FED. AID PROJECT |         |          |              |           |