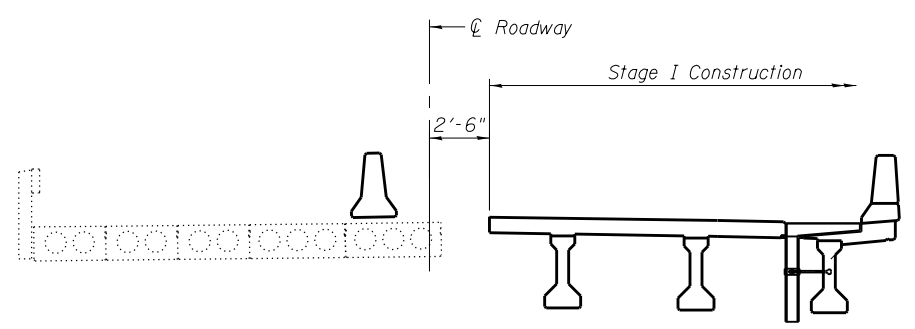
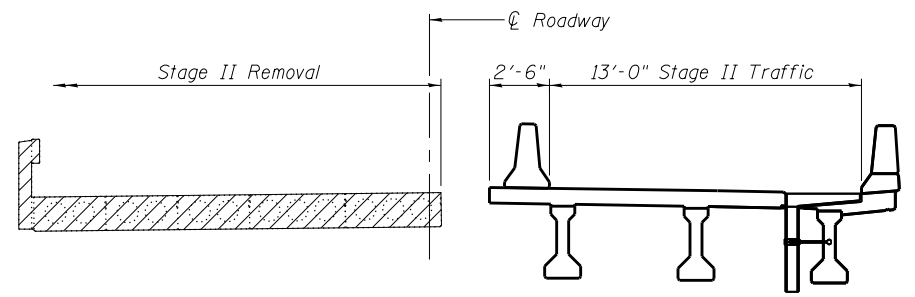


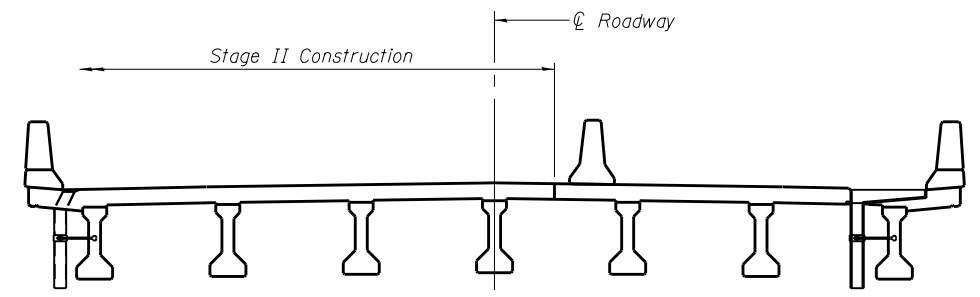
STAGE I REMOVAL



STAGE I CONSTRUCTION

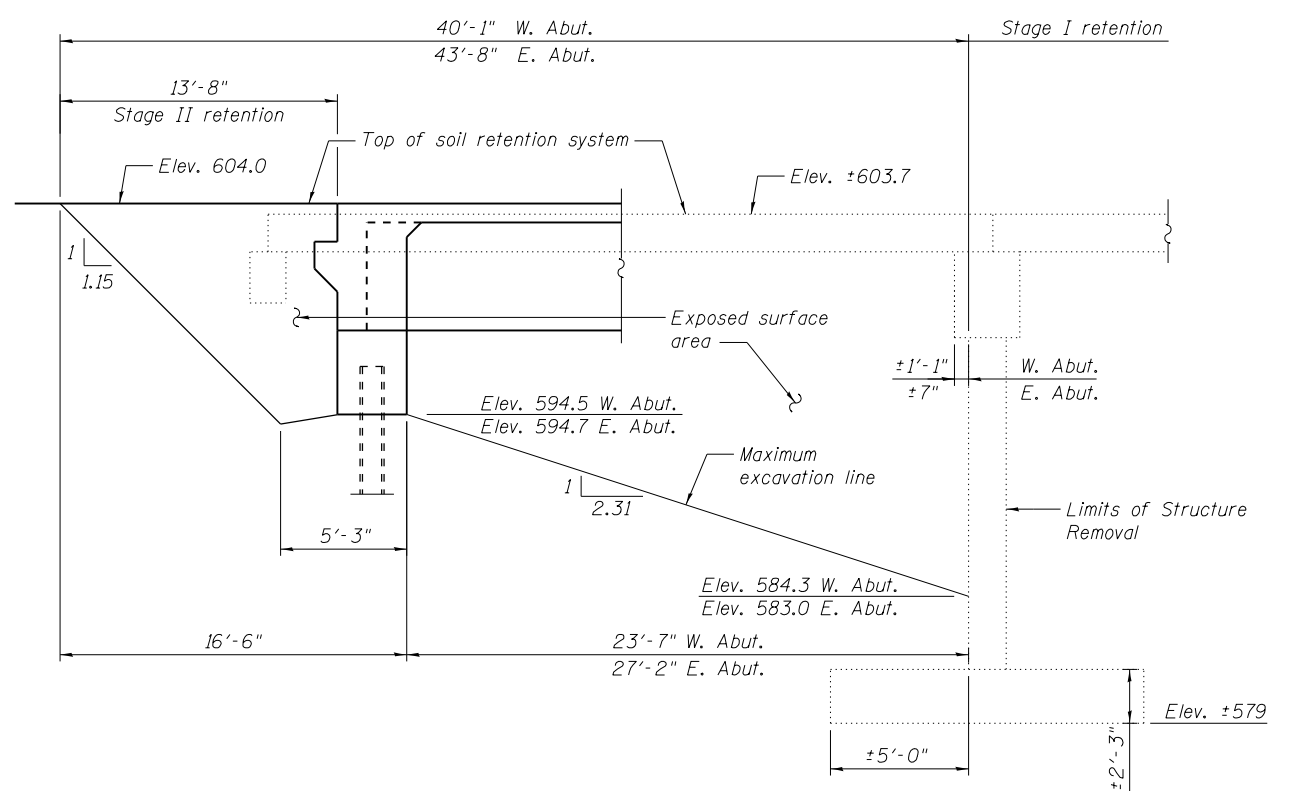


STAGE II REMOVAL



STAGE II CONSTRUCTION

Notes:
 All staging cross sections are looking East.
 For quantity of Temporary Concrete Barrier, see roadway plans.
 Hatched area indicates Removal of Existing Structures



TEMPORARY SOIL RETENTION SYSTEM

(dimensions along \varnothing roadway)

A cantilevered sheet piling design does not appear feasible and additional members or other retention systems may be necessary. The Contractor shall submit a temporary soil retention system design including plan details and calculations for review and acceptance by the Engineer.

BILL OF MATERIAL

ITEM	UNIT	TOTAL
Temporary Soil Retention System	Sq. Ft.	965

FILE NAME = C:\Users\sparks\OneDrive\Documents\0590515-72A19-003-1\tagm9.dgn
 CB PROJECT NO. 10800E-1

Coombes-Bloxdorf P.C.
 CIVIL ENGINEERS
 STRUCTURAL ENGINEERS
 LAND SURVEYORS
 Design Firm License No. 184-002703

USER NAME = sparks	DESIGNED - CME	REVISED -
PLOT SCALE = 8:10' = 1" = 10'	CHECKED - MCB	REVISED -
PLOT DATE = Oct-19-2012 02:14:34PM	DRAWN - MML	REVISED -
	CHECKED - MCB	REVISED -

**STATE OF ILLINOIS
 DEPARTMENT OF TRANSPORTATION**

**STAGE CONSTRUCTION DETAILS
 STRUCTURE NO. 059-0515**

SHEET NO. 3 OF 22 SHEETS

F.A.P. RTE. 325	SECTION 116BR-1	COUNTY MACOUPIN	TOTAL SHEETS 67	SHEET NO. 39
CONTRACT NO. 72A19				
ILLINOIS FED. AID PROJECT				