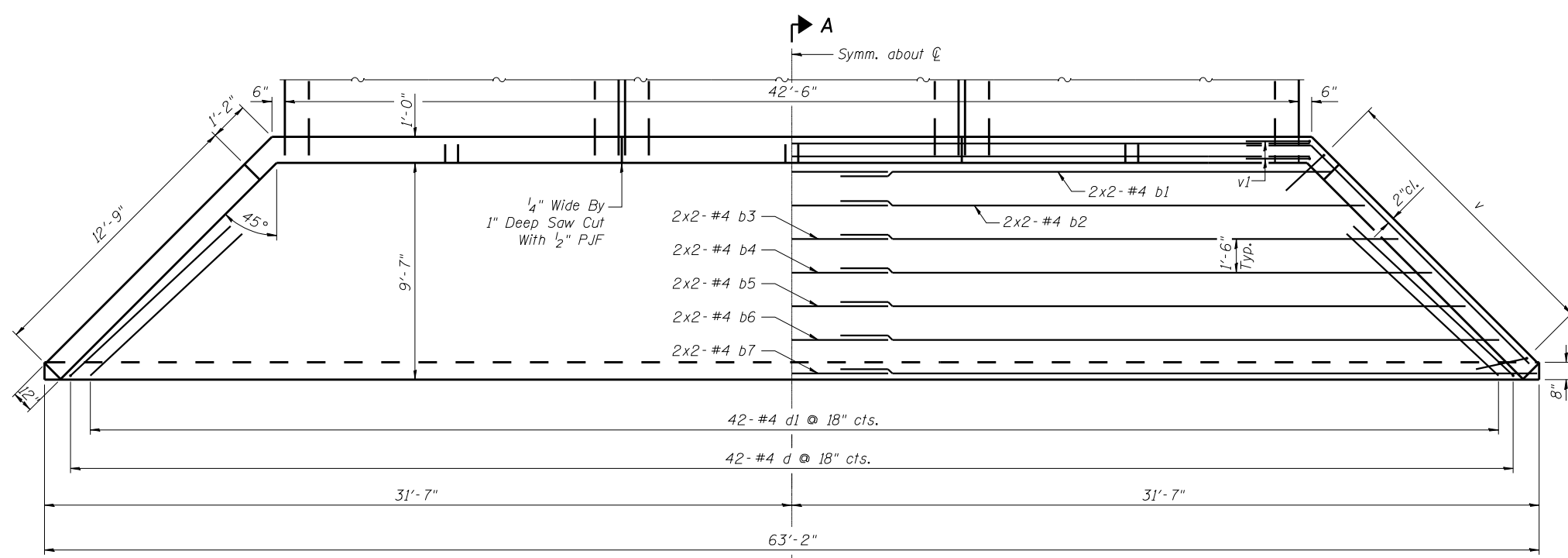


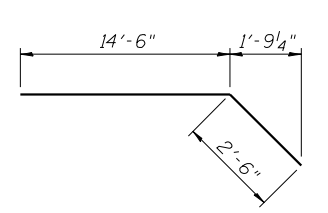
**END ELEVATION**



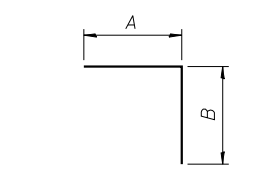
SHOWING DIMENSIONS

SHOWING REINFORCEMENT

**PLAN**

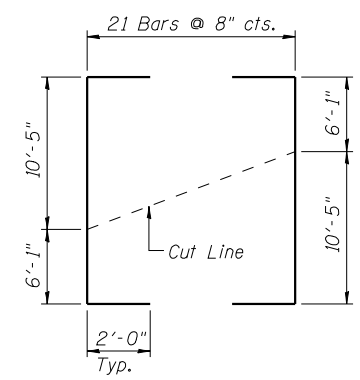


**BAR h**  
(Bend in field)



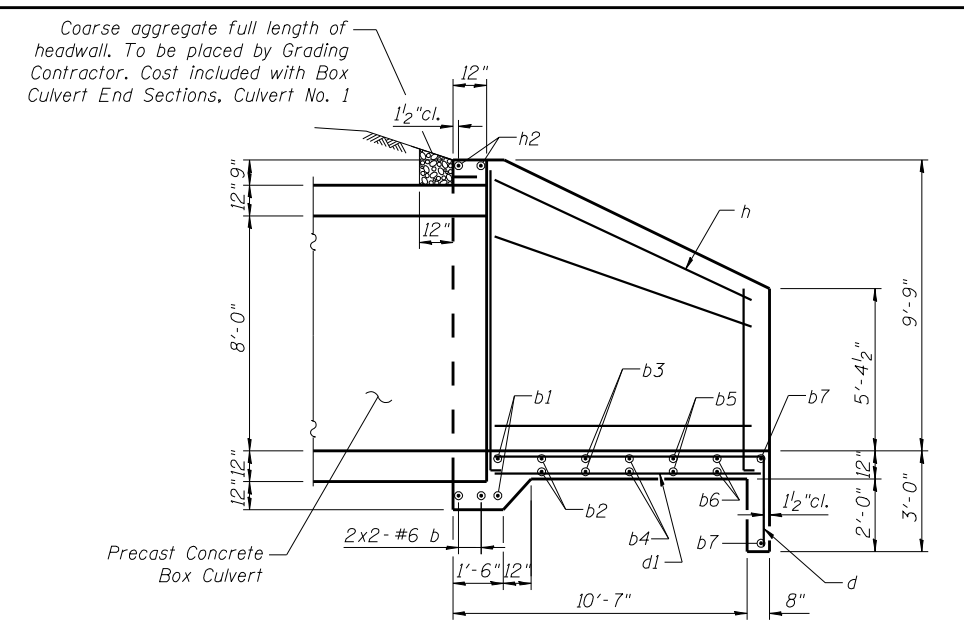
Bar	A	B
d	9'-3"	2'-8"
v1	3'-0"	6'-2"

**BARS d & v1**



**FIELD CUTTING DIAGRAM**

Note:  
Order v bars full length. Cut as shown and use remainder of bars in opposite wing.



**SECTION A-A**

**NOTES:**

- Bill of Material for two end sections.
- Bar dimensions are out to out.
- Not to scale or proper orientation.
- Exposed edges shall be beveled 3/4".
- Headwall at 0° skew to culvert centerline.
- Bars indicated thus 2x2-#4 etc. indicates 2 lines of bars with 2 lengths per line.
- Minimum bar laps:  
#6 bar = 2'-7"  
#4 bar = 1'-9"

**BILL OF MATERIAL**

Bar	No.	Size	Length	Shape
b	8	#6	22'-11"	┌───┐
b1	8	#4	24'-2"	┌───┐
b2	8	#4	25'-8"	┌───┐
b3	8	#4	27'-2"	┌───┐
b4	8	#4	28'-8"	┌───┐
b5	8	#4	30'-2"	┌───┐
b6	8	#4	31'-8"	┌───┐
b7	8	#4	32'-8"	┌───┐
d	84	#4	11'-11"	┌──┐
d1	84	#4	9'-3"	┌──┐
h	4	#4	17'-0"	┌──┐
h1	24	#4	13'-8"	┌──┐
h2	8	#6	22'-11"	┌──┐
v	42	#5	20'-6"	┌──┐
v1	16	#6	9'-2"	┌──┐
ITEM	UNIT	TOTAL		
* Reinforcement Bars	Pound	4,190		
** Box Culvert End Sections, Culvert No. 1	Each	2		

\* Reinforcement Bars will not be paid for separately, but will be included in the cost of Box Culvert End Sections, Culvert No. 1 (See Std. Specifications)  
\*\* 2 End Sections = 67.9 Cu. Yd. Concrete

FILE NAME =	USER NAME = \$USER\$	DESIGNED - RJP	REVISED -
\$FILEL\$		CHECKED - ADL	REVISED -
	PLOT SCALE = \$SCALE\$	DRAWN - RJP	REVISED -
	PLOT DATE = \$DATE\$	CHECKED - ADL	REVISED -

**STATE OF ILLINOIS  
DEPARTMENT OF TRANSPORTATION**

**CAST-IN-PLACE END SECTION  
S.N. 034-2523**

SHEET NO. 4 OF 6 SHEETS

F.A.P. RTE.	SECTION	COUNTY	TOTAL SHEETS	SHEET NO.
510	120B-3	HANCOCK	38	25
CONTRACT NO. 72B67				

ILLINOIS FED. AID PROJECT  
Klingner & Associates P.C.