

STATE OF ILLINOIS
 DEPARTMENT OF TRANSPORTATION
 DIVISION OF HIGHWAYS

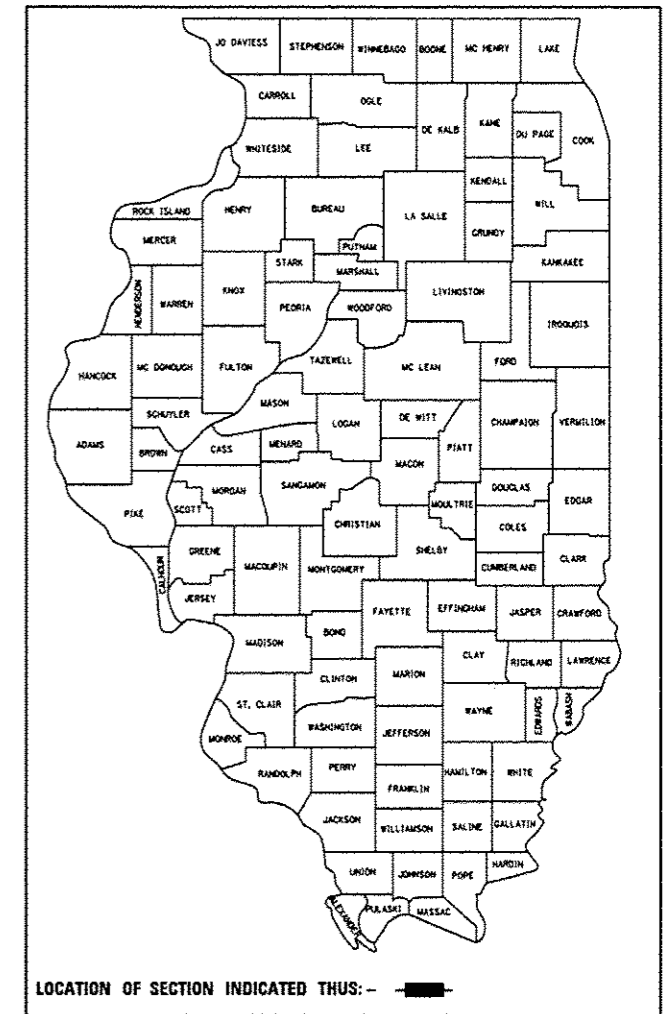
**PROPOSED
 HIGHWAY PLANS**

VARIOUS ROUTES
 D6 PAVEMENT MARKING 2012
 INTERSECTION PAVEMENT MARKINGS
 PROJECT ACHSIP-000S(914)
 VARIOUS COUNTIES

C-96-033-12

F.A. RTE.	SECTION	COUNTY	TOTAL SHEETS	SHEET NO.
	*	VARIOUS	35	1
		ILLINOIS	CONTRACT NO. 72F21	

D-96-033-12

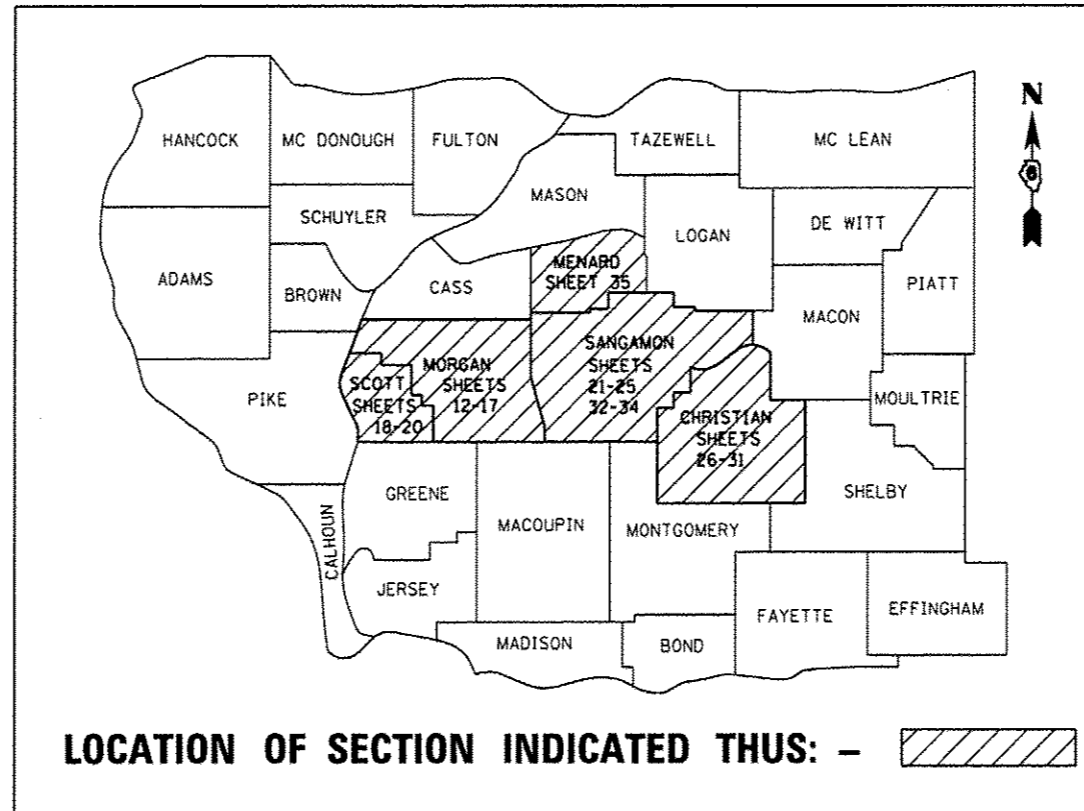


LOCATION OF SECTION INDICATED THIS: - [black rectangle]

FOR INDEX OF SHEETS, SEE SHEET NO. 2

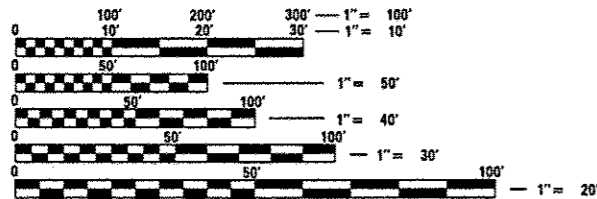
HIGHWAY STANDARDS

- 000001-06
- 701306-03
- 701400-06
- 701401-07
- 701451-01
- 701701-08
- 701901-02
- 780001-03
- 781001-03



LOCATION OF SECTION INDICATED THIS: - [hatched rectangle]

LOCATION MAP



FULL SIZE PLANS HAVE BEEN PREPARED USING STANDARD ENGINEERING SCALES. REDUCED SIZED PLANS WILL NOT CONFORM TO STANDARD SCALES. IN MAKING MEASUREMENTS ON REDUCED PLANS, THE ABOVE SCALES MAY BE USED.

J.U.L.I.E.
 JOINT UTILITY LOCATION INFORMATION FOR EXCAVATION
 1-800-892-0123
 OR 811

PROJECT ENGINEER: JEFF MYERS 217-782-4761
 PROJECT MANAGER: ED KERN 217-524-7547

CONTRACT NO. 72F21

STATE OF ILLINOIS
 DEPARTMENT OF TRANSPORTATION
 DIVISION OF HIGHWAYS

SUBMITTED October 16, 2012
Roger L. Driskell
 DEPUTY DIRECTOR OF HIGHWAYS, REGION ENGINEER

Dec 7, 2012
John D. Barampalli, P.E.
 acting ENGINEER OF DESIGN AND ENVIRONMENT

Dec 7, 2012
William B. Frey, Jr.
 acting DIRECTOR OF HIGHWAYS, CHIEF ENGINEER

PRINTED BY THE AUTHORITY
 OF THE STATE OF ILLINOIS