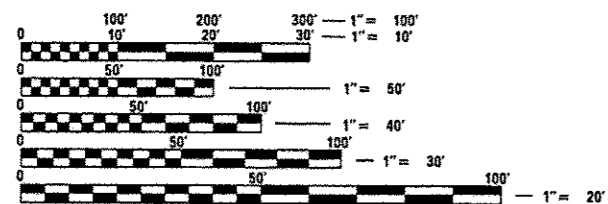


INDEX OF SHEETS

- 1 COVER SHEET
- 2 GENERAL NOTES
- 3-10A SUMMARY OF QUANTITIES
- 11-22 SCHEDULES OF QUANTITIES
- 23-30 TYPICAL SECTIONS
- 31-33 ALIGNMENTS, TIES & BENCHMARKS
- 34-54 PLAN SHEETS
- 55-62 TRAFFIC CONTROL DETAILS
- 63-83 PAVEMENT MARKINGS SHEETS
- 84-87 TRAFFIC SIGNAL PLAN SHEETS
- 88 LIGHTING PLAN SHEETS
- 89-103 BRIDGE JOINT REPAIR PLAN SHEETS
- 104-113A DETAIL SHEETS
- 114-116 CROSS SECTION SHEETS

SEE SHEET 2 FOR STANDARDS



FULL SIZE PLANS HAVE BEEN PREPARED USING STANDARD ENGINEERING SCALES. REDUCED SIZED PLANS WILL NOT CONFORM TO STANDARD SCALES. IN MAKING MEASUREMENTS ON REDUCED PLANS, THE ABOVE SCALES MAY BE USED.

J.U.L.I.E.
JOINT UTILITY LOCATION INFORMATION FOR EXCAVATION
1-800-892-0123
OR 811

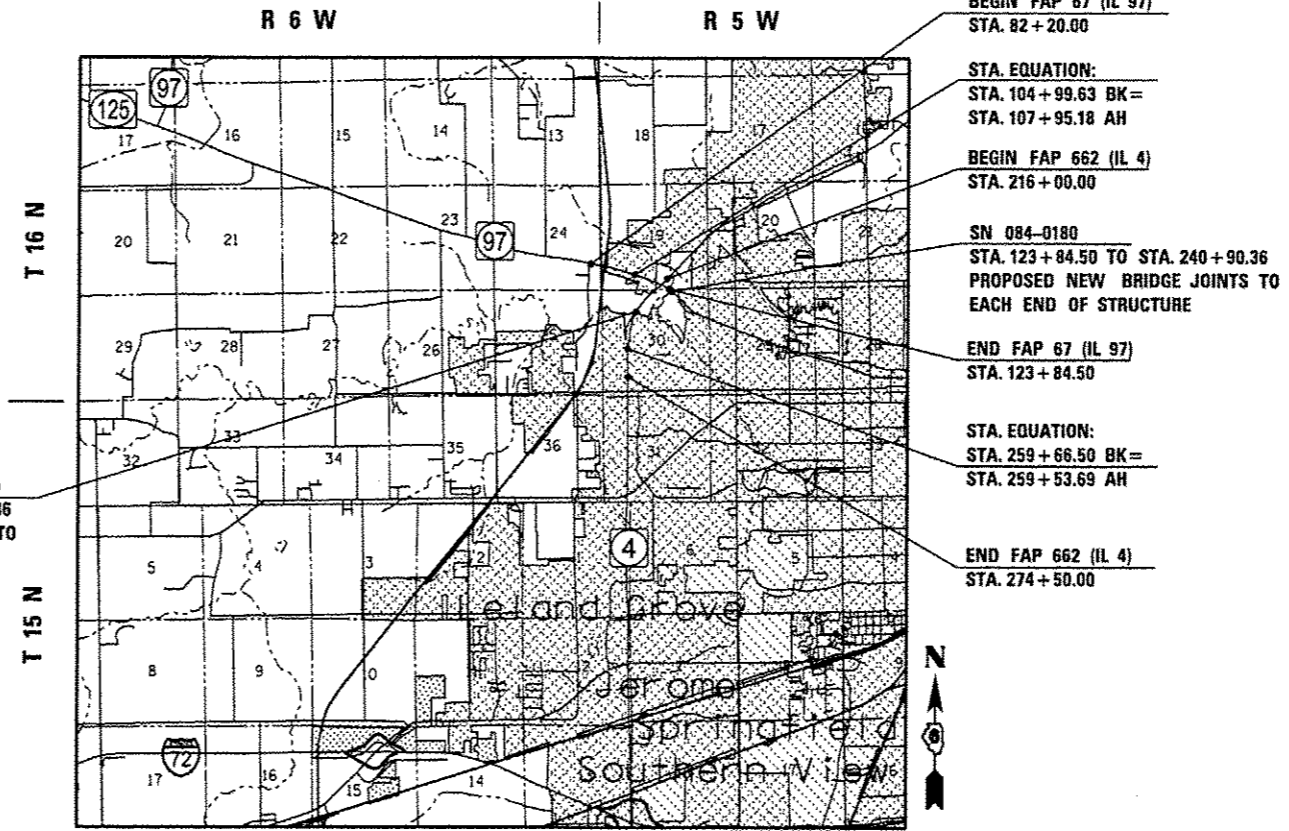
SENIOR TEAM ENGINEER: MARK DUST (217) 785-0597
TEAM MANAGER: FRANK SHIMKUS (217) 785-9102

CONTRACT NO. 72F23

STATE OF ILLINOIS
DEPARTMENT OF TRANSPORTATION
DIVISION OF HIGHWAYS
PROPOSED
HIGHWAY PLANS

FAP ROUTE 662 (IL 4) / 67 (IL 97)
SECTION 1(RS), 2(RS), S(RS-6)
PROJECT ACNHF-ACF-0005(910)
3P RESURFACING, STRUCTURE JOINT REPAIRS
SANGAMON COUNTY

C-96-035-12



SN 084-0181(SB) & 084-0182(NB)
STA. 238+48.39 TO STA. 240+90.36
PROPOSED NEW BRIDGE JOINTS TO
EACH END OF EACH STRUCTURE

BEGIN FAP 67 (IL 97)
STA. 82+20.00

STA. EQUATION:
STA. 104+99.63 BK=
STA. 107+95.18 AH

BEGIN FAP 662 (IL 4)
STA. 216+00.00

SN 084-0180
STA. 123+84.50 TO STA. 240+90.36
PROPOSED NEW BRIDGE JOINTS TO
EACH END OF STRUCTURE

END FAP 67 (IL 97)
STA. 123+84.50

STA. EQUATION:
STA. 259+66.50 BK=
STA. 259+53.69 AH

END FAP 662 (IL 4)
STA. 274+50.00



LOCATION OF SECTION INDICATED THUS: - [rectangle] -

	IL 4	IL 97
ADT (2011) =	23,000	10,600
ADT (2031) =	30,300	14,800
PV =	93.5%	94.2%
SU =	4.0%	4.2%
MU =	2.5%	1.6%

STATE OF ILLINOIS
DEPARTMENT OF TRANSPORTATION
DIVISION OF HIGHWAYS

SUBMITTED October 19 2012
Roger L. Driskell
DEPUTY DIRECTOR OF HIGHWAYS, REGIONAL ENGINEER

Dec 4 2012
John D. Baramelli P.E.
acting ENGINEER OF DESIGN AND ENVIRONMENT

Dec 7 2012
William R. Fryer
acting DIRECTOR OF HIGHWAYS, CHIEF ENGINEER

**PRINTED BY THE AUTHORITY
OF THE STATE OF ILLINOIS**

GROSS LENGTH = 9,731.76 FT. = 1.843 MILE
NET LENGTH = 9,489.79 FT. = 1.797 MILE

F.A.P. RTE.	SECTION	COUNTY	TOTAL SHEETS	SHEET NO.
** 662/67	1(RS), 2(RS), S(RS-6)	SANGAMON	116	1
		ILLINOIS	CONTRACT NO. 72F23	

* 116+2 = 118

D96-035-12