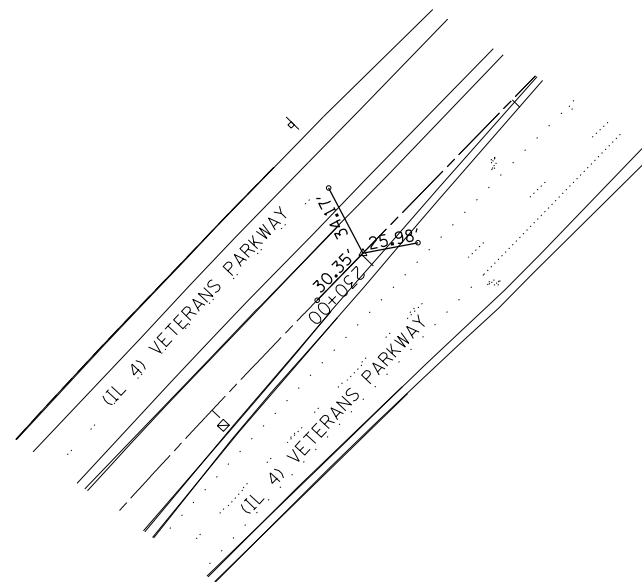


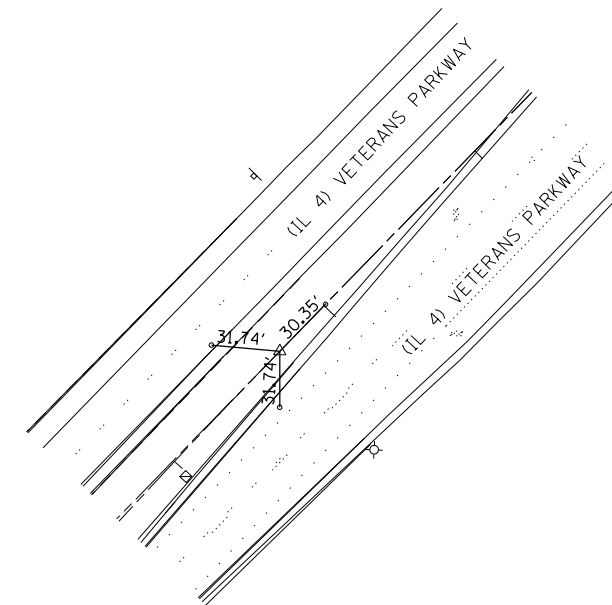
POT STA. 215+01.91

#4 REBAR WITH CAP



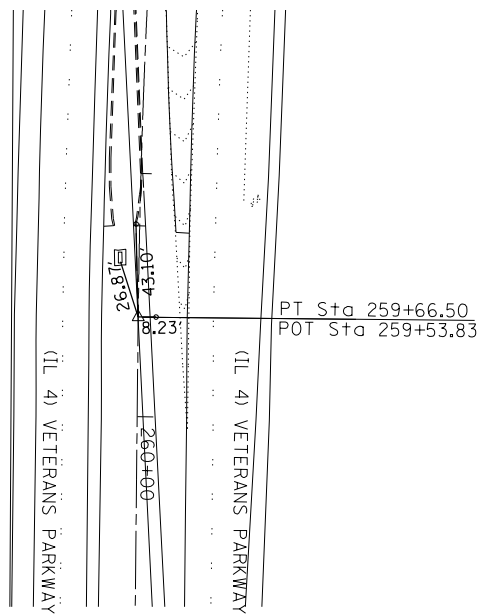
POT STA. 229+99.14

#4 REBAR WITH IDOT CAP



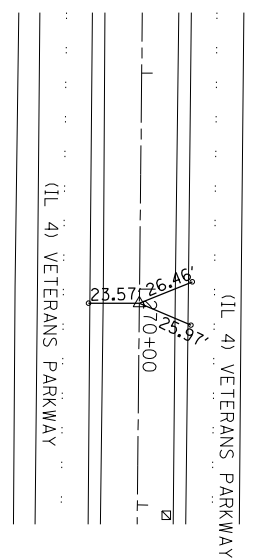
POT STA. 230+29.49

#4 REBAR WITH IDOT CAP



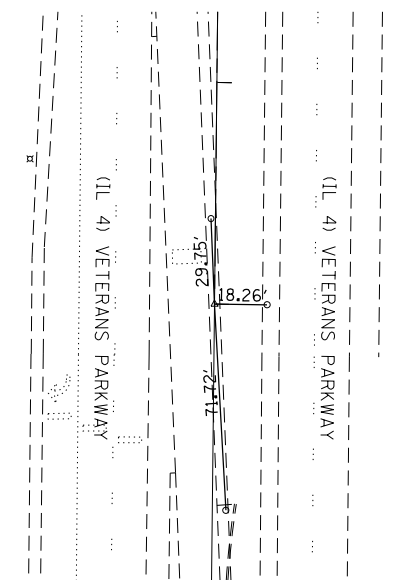
STA. EQ. 259+53.83BK = STA 259+66.50AH

CHSLD "X" IN TURN LANE



POT STA. 270+06.58

#4 REBAR WITH IDOT CAP



POT STA. 279+00.00

PK NAIL CHSLD "X"

FILE NAME =	USER NAME = sparksgw	DESIGNED -	REVISED -
c:\pw\work\p\idot\sparksgw\10290859\06723-sht-ATB.dgn		DRAWN -	REVISED -
Default	PLOT SCALE = 100.0000' / in.	CHECKED -	REVISED -
	PLOT DATE = Oct-19-2012 03:55:39PM	DATE -	REVISED -

STATE OF ILLINOIS
DEPARTMENT OF TRANSPORTATION

ALIGNMENT, TIES & BENCHMARKS
FAP 662/67 (IL 4/97)

SCALE: SHEET OF SHEETS STA. TO STA.

F.A.P. RTE.	SECTION	COUNTY	TOTAL SHEETS	SHEET NO.
••	1(RS),2(RS),5(RS-6)	SANGAMON	116	31
CONTRACT NO. 72F23				
ILLINOIS FED. AID PROJECT				