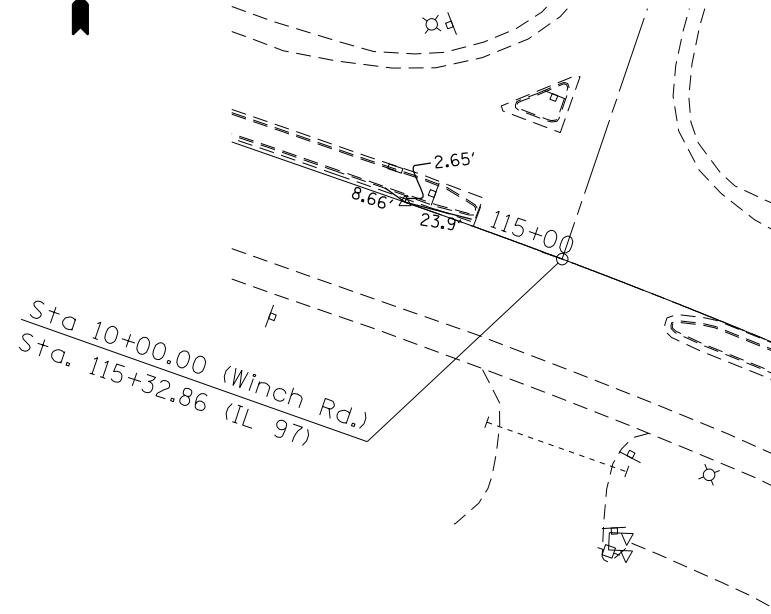


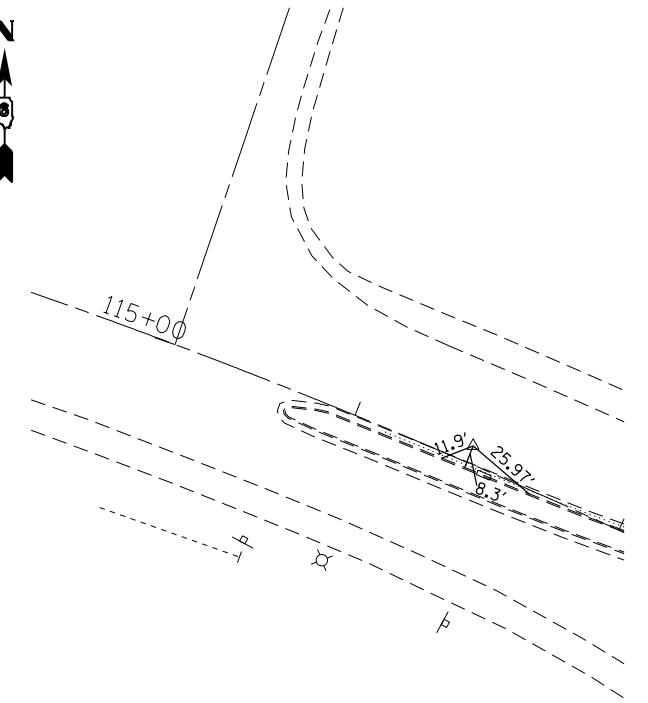
POT STA. 107+95.18

PK NAIL IN CHSLD "X"



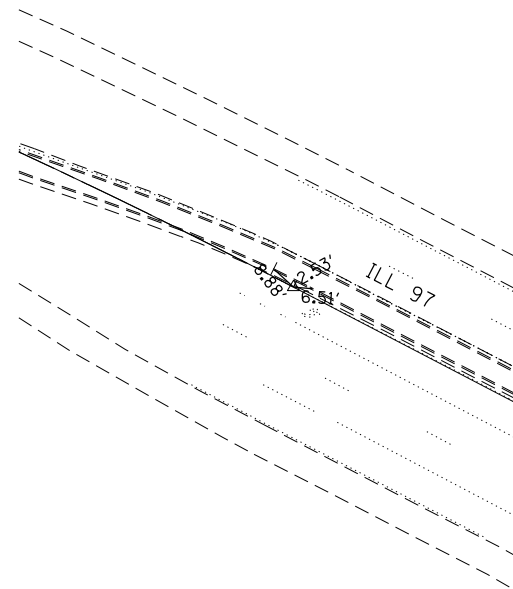
PC STA. 114+74.80

STAR DRILL IN CHSLD "X"



PI STA. 116+42.19

STAR DRILL IN CHSLD "X"



PT STA. 118+08.99

STAR DRILL IN CHSLD "X"

BM 2A - CHISELED "□" ON N.W. SLOPE WALL STR. NO. 084-0180
JEFFERSON - E. OF VETERANS ELEV. 539.67' (IDOT)

BM RSI - CHISELED "+" ON CENTER INLET 0.5' RT. STA. 231+48
ELEV. 542.09'

IDOT
BM 507 - CHISELED "□" N.E. COR. BRIDGE 58.6' LT. STA. 238+36
ELEV. 549.68'

IDOT
BM 506 - CHISELED "□" S.E. COR. BRIDGE 58.4' LT. STA. 241+03
ELEV. 551.11'

BM RSI 2 - CHISELED "+" ON CENTER INLET 0.0' RT.
STA. 246+22 ELEV. 549.96'

BM RSI 3 - CHISELED "□" ON ISLAND 6.1' LT. STA. 255.97
ELEV. 581.40'

BM 507 - CHISELED "□" ON HEADWALL 94.0' LT.
STA. 256+37 ELEV. 579.17'

FILE NAME =	USER NAME = sparksgw	DESIGNED -	REVISED -
c:\pw\work\p\idot\sparksgw\10290859\06723-sht-ATB.dgn		DRAWN -	REVISED -
Default	PLOT SCALE = 100.0000' / in.	CHECKED -	REVISED -
	PLOT DATE = Oct-19-2012 03:55:40PM	DATE -	REVISED -

**STATE OF ILLINOIS
DEPARTMENT OF TRANSPORTATION**

**ALIGNMENT, TIES & BENCHMARKS
FAP 662/67 (IL 4/97)**

SCALE: SHEET OF SHEETS STA. TO STA.

F.A.P. RTE.	SECTION	COUNTY	TOTAL SHEETS	SHEET NO.
••	1(RS),2(RS),5(RS-6)	SANGAMON	116	33
CONTRACT NO. 72F23			ILLINOIS FED. AID PROJECT	