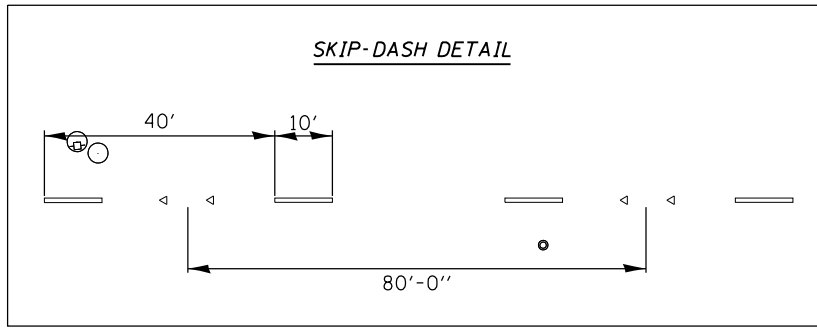
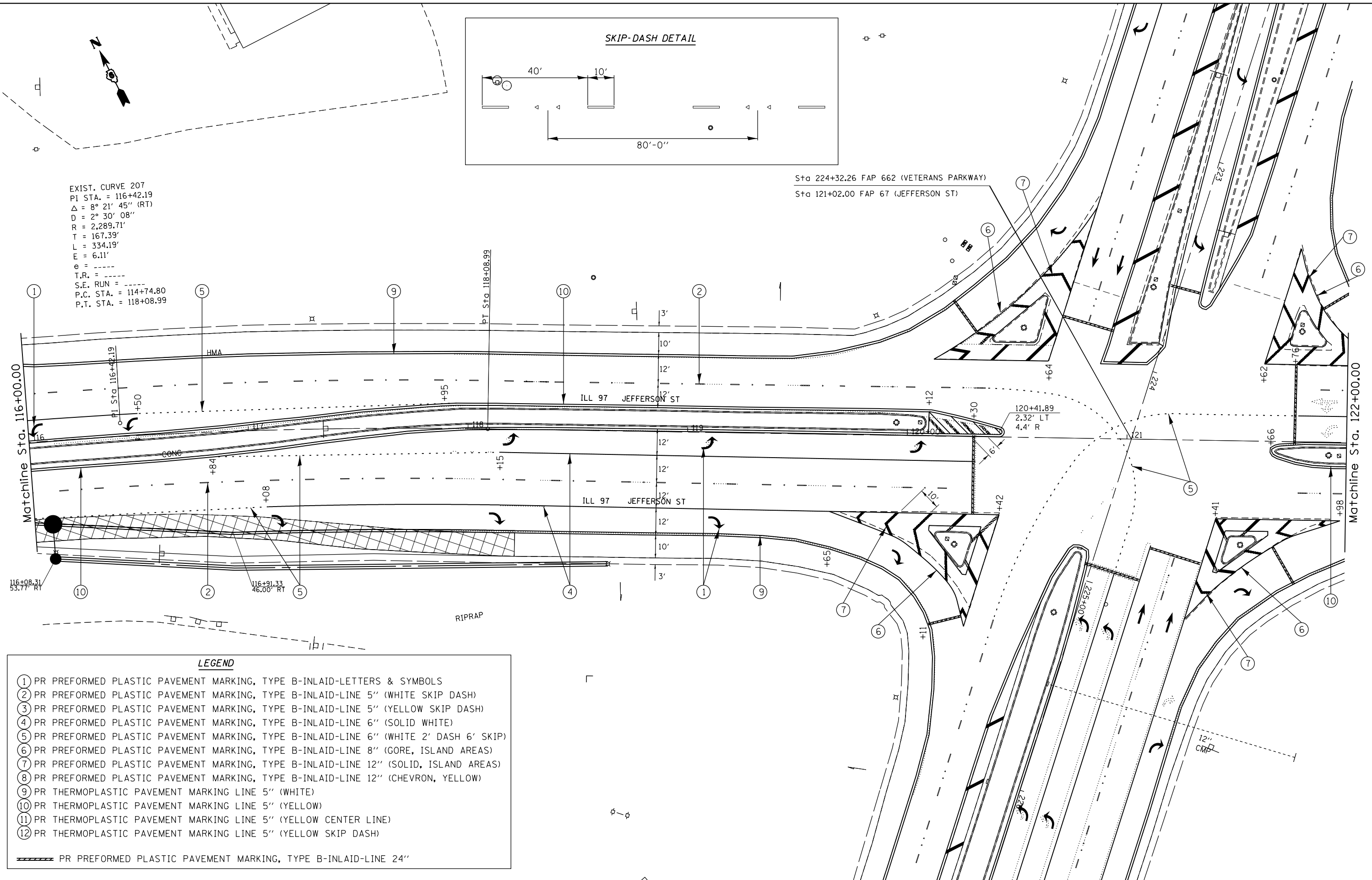


EXIST. CURVE 207
 P.I. STA. = 116+42.19
 $\Delta = 8^\circ 21' 45''$ (RT)
 $D = 2^\circ 30' 08''$
 $R = 2,289.71'$
 $T = 167.39'$
 $L = 334.19'$
 $E = 6.11'$
 $e = \text{---}$
 $T.R. = \text{---}$
 $S.E. \text{ RUN} = \text{---}$
 $P.C. \text{ STA.} = 114+74.80$
 $P.T. \text{ STA.} = 118+08.99$



Sta 224+32.26 FAP 662 (VETERANS PARKWAY)
 Sta 121+02.00 FAP 67 (JEFFERSON ST)



LEGEND

- ① PR PREFORMED PLASTIC PAVEMENT MARKING, TYPE B-INLAID-LETTERS & SYMBOLS
- ② PR PREFORMED PLASTIC PAVEMENT MARKING, TYPE B-INLAID-LINE 5" (WHITE SKIP DASH)
- ③ PR PREFORMED PLASTIC PAVEMENT MARKING, TYPE B-INLAID-LINE 5" (YELLOW SKIP DASH)
- ④ PR PREFORMED PLASTIC PAVEMENT MARKING, TYPE B-INLAID-LINE 6" (SOLID WHITE)
- ⑤ PR PREFORMED PLASTIC PAVEMENT MARKING, TYPE B-INLAID-LINE 6" (WHITE 2' DASH 6' SKIP)
- ⑥ PR PREFORMED PLASTIC PAVEMENT MARKING, TYPE B-INLAID-LINE 8" (GORE, ISLAND AREAS)
- ⑦ PR PREFORMED PLASTIC PAVEMENT MARKING, TYPE B-INLAID-LINE 12" (SOLID, ISLAND AREAS)
- ⑧ PR PREFORMED PLASTIC PAVEMENT MARKING, TYPE B-INLAID-LINE 12" (CHEVRON, YELLOW)
- ⑨ PR THERMOPLASTIC PAVEMENT MARKING LINE 5" (WHITE)
- ⑩ PR THERMOPLASTIC PAVEMENT MARKING LINE 5" (YELLOW)
- ⑪ PR THERMOPLASTIC PAVEMENT MARKING LINE 5" (YELLOW CENTER LINE)
- ⑫ PR THERMOPLASTIC PAVEMENT MARKING LINE 5" (YELLOW SKIP DASH)

▬▬▬▬ PR PREFORMED PLASTIC PAVEMENT MARKING, TYPE B-INLAID-LINE 24"

| | | | |
|---|------------------------------------|------------|-----------|
| FILE NAME = | USER NAME = sparksgw | DESIGNED - | REVISED - |
| ei:\pw\work\p\dtdot\sparksgw\10290859\0672F32-sht-pmk_2.dgn | | DRAWN - | REVISED - |
| Default | PLOT SCALE = 40.0000' / in. | CHECKED - | REVISED - |
| | PLOT DATE = Oct-19-2012 03:56:20PM | DATE - | REVISED - |

**STATE OF ILLINOIS
 DEPARTMENT OF TRANSPORTATION**

**PAVEMENT MARKING SHEETS
 FAP 67 (IL 97)**

SCALE: SHEET OF SHEETS STA. TO STA.

| F.A.P. RTE. | SECTION | COUNTY | TOTAL SHEETS | SHEET NO. |
|---------------------------|---------------------|----------|--------------------|-----------|
| •• | 1(RS),2(RS),5(RS-6) | SANGAMON | 116 | 81 |
| | | | CONTRACT NO. 72F23 | |
| ILLINOIS FED. AID PROJECT | | | | |