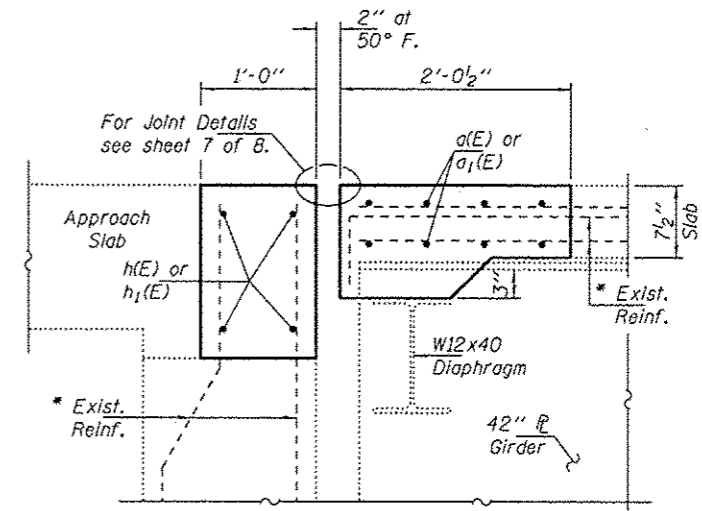


CONCRETE REPLACEMENT - SN: 084-0181 (SB)



SECTION B-B

\* Existing reinforcement bars extending into the removal area shall be cleaned, straightened and incorporated into the new construction. Any reinforcement bars that are damaged during concrete removal shall be replaced with an approved bar splicer or anchorage system. Cost Included with Concrete Removal.

Notes:  
For Parapet Details see sheet 6 of 8.

BILL OF MATERIAL  
SN: 084-0181 (S.B.)

Bar	No.	Size	Length	Shape
a(E)	16	#5	19'-0"	—
a1(E)	16	#5	23'-0"	—
a2(E)	16	#6	4'-7"	—
d(E)	6	#5	5'-4"	L
d1(E)	8	#5	4'-2"	L
d2(E)	6	#5	5'-4"	L
h(E)	8	#6	19'-3"	—
h1(E)	8	#6	23'-3"	—
Concrete Removal			Cu. Yd.	10.7
Concrete Superstructure			Cu. Yd.	10.7
Reinforcement Bars, Epoxy Coated			Pound	1420