

STATE OF ILLINOIS
DEPARTMENT OF TRANSPORTATION
DIVISION OF HIGHWAYS
**PROPOSED
CONTRACT MAINTENANCE**

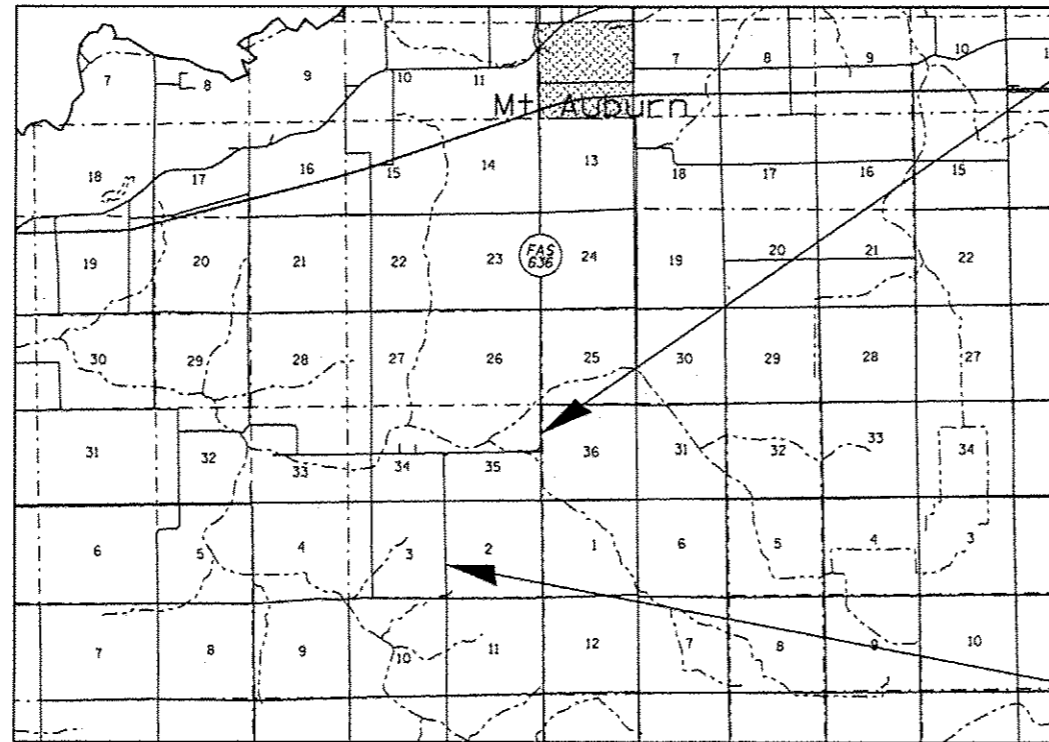
FOR INDEX OF SHEETS, SEE SHEET NO. 2

FAS 636 (MT AUBURN RD)
SECTION (4) 1-2

CHRISTIAN COUNTY

C-96-083-12

R 2 W



BEGIN PROJECT
STA. 224 + 51.52

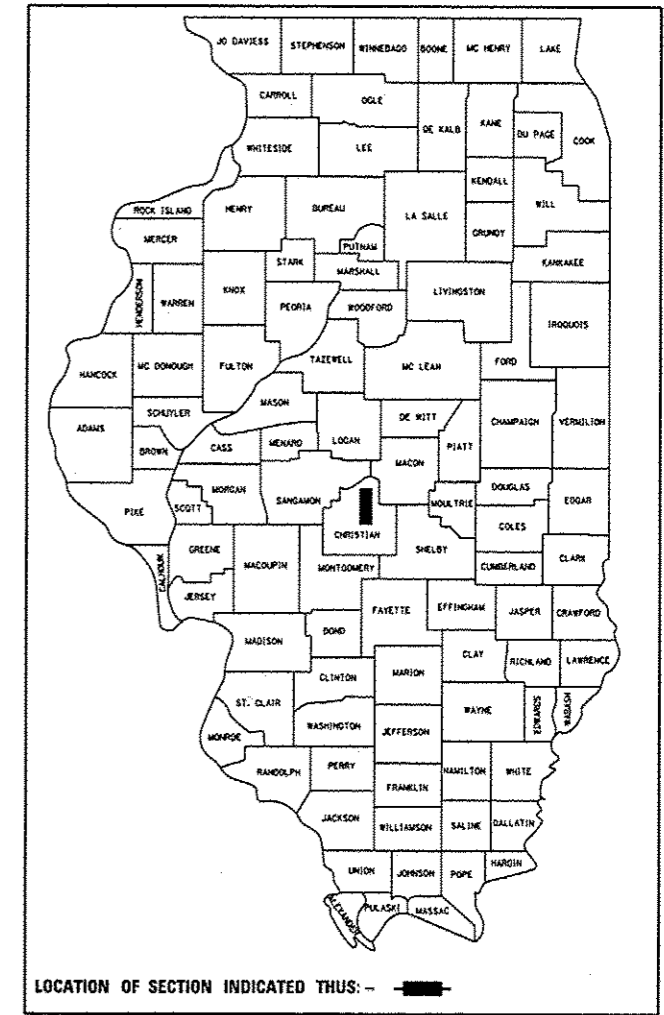
END PROJECT
STA. 332 + 37

STA. EQ. 229 + 87.22bk = 230 + 51.55ah
STA. EQ. 282 + 55.02bk = 283 + 84.32ah
STA. EQ. 312 + 80.17bk = 313 + 11.97ah

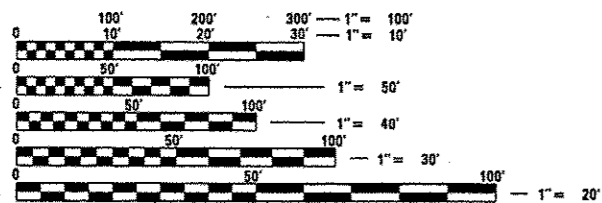
GROSS LENGTH = 10,560.00 FT. = 2.000 MILE

F.A.S. RTE.	SECTION	COUNTY	TOTAL SHEETS	SHEET NO.
636	(4) 1-2	CHRISTIAN	6	1
FED. ROAD DIST. NO.	ILLINOIS	CONTRACT NO. 72F65		

D-96-083-12



ADT = 1,000(90)



FULL SIZE PLANS HAVE BEEN PREPARED USING STANDARD ENGINEERING SCALES. REDUCED SIZED PLANS WILL NOT CONFORM TO STANDARD SCALES. IN MAKING MEASUREMENTS ON REDUCED PLANS, THE ABOVE SCALES MAY BE USED.

J.U.L.I.E.
JOINT UTILITY LOCATION INFORMATION FOR EXCAVATION
1-800-892-0123
OR 811

PLAN AND CONTRACT TECHNICIAN
TIMOTHY SHARP (217)782-7743

CONTRACT NO. 72F65

STATE OF ILLINOIS
DEPARTMENT OF TRANSPORTATION
DIVISION OF HIGHWAYS

SUBMITTED October 24 2012
Ray Z. Duda
DEPUTY DIRECTOR OF HIGHWAYS, REGION ENGINEER

Dec 7 2012
John D. Baranzoli, P.E.
ENGINEER OF DESIGN AND ENVIRONMENT

Dec 7 2012
William R. Frey, Jr.
DIRECTOR OF HIGHWAYS, CHIEF ENGINEER

**PRINTED BY THE AUTHORITY
OF THE STATE OF ILLINOIS**