

STATE OF ILLINOIS
 DEPARTMENT OF TRANSPORTATION
 DIVISION OF HIGHWAYS

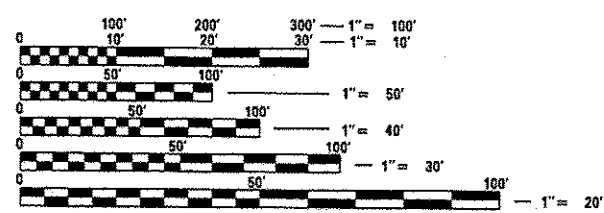
**PROPOSED
 HIGHWAY PLANS**

FAI 72 (IL 72 BL, IL 104)
 SECTION (23,33,A)I-1
 PAVEMENT PATCHING
 TYPE of IMPROVEMENT
 MORGAN COUNTY

C-96-084-12

FOR INDEX OF SHEETS, SEE SHEET NO. 2

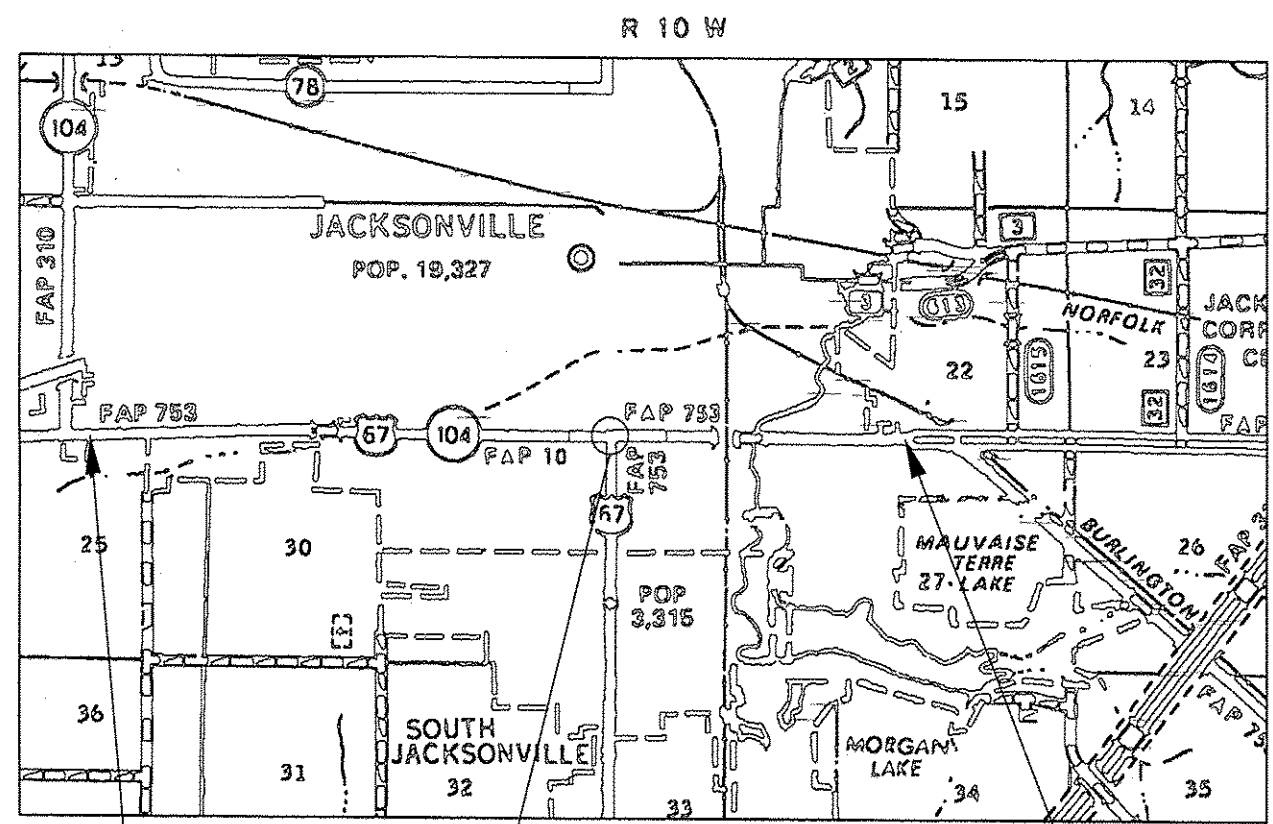
F.A.P. RTE.	SECTION	COUNTY	TOTAL SHEETS	SHEET NO.
753	(23,33,A)I-1	MORGAN	9	1
ILLINOIS				72F66



FULL SIZE PLANS HAVE BEEN PREPARED USING STANDARD ENGINEERING SCALES. REDUCED SIZED PLANS WILL NOT CONFORM TO STANDARD SCALES. IN MAKING MEASUREMENTS ON REDUCED PLANS, THE ABOVE SCALES MAY BE USED.

J.U.L.I.E.
 JOINT UTILITY LOCATION INFORMATION FOR EXCAVATION
 1-800-892-0123
 OR 811

PLAN AND CONTRACT TECHNICIAN
 TIMOTHY SHARP (217) 782-7743
 DAVE SHAH
 CONTRACT NO. 72F66



END PROJECT STATION 79+58.85 STATION EQUATION STA. 185+82.12 BK = STA. 299+00 AH BEGIN PROJECT STATION 332+04

GROSS LENGTH = 13,921.80 FT. = 2.6367 MILE

AVERAGE DAILY TRAFFIC (ADT) - 22,000(1,050)

STATE OF ILLINOIS
 DEPARTMENT OF TRANSPORTATION
 DIVISION OF HIGHWAYS

SUBMITTED October 29, 2012
Raymond J. D'Amico
 DEPUTY DIRECTOR OF HIGHWAYS, REGION ENGINEER

Dec 7, 2012
John D. Baranzoni, P.E.
 ENGINEER OF DESIGN AND ENVIRONMENT

Dec 7, 2012
William R. Freese, Jr.
 DIRECTOR OF HIGHWAYS, CHIEF ENGINEER

PRINTED BY THE AUTHORITY
 OF THE STATE OF ILLINOIS