

1-18-13 LETTING ITEM 045

STATE OF ILLINOIS
DEPARTMENT OF TRANSPORTATION
DIVISION OF HIGHWAYS

**PROPOSED
HIGHWAY PLANS**

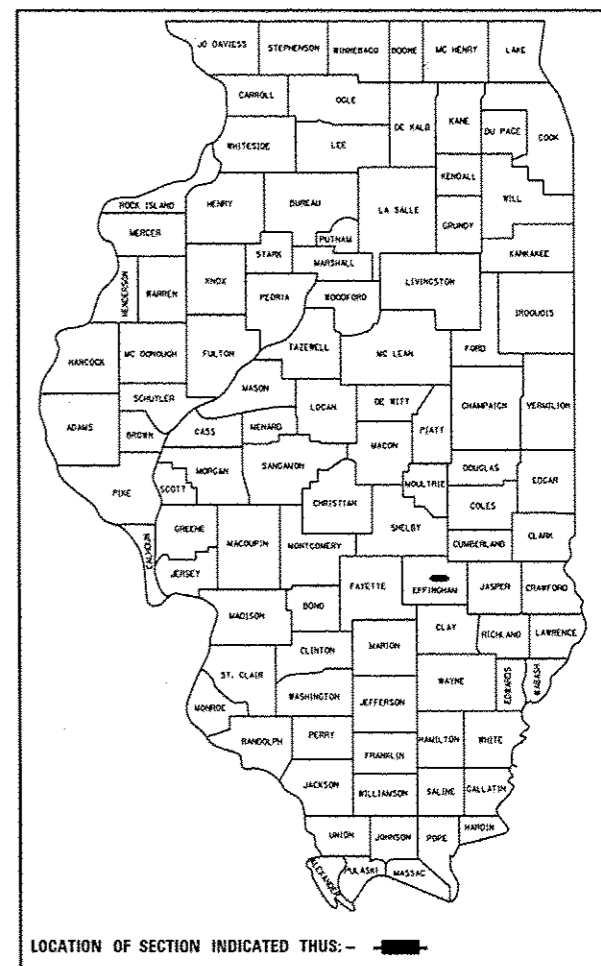
F.A.S. ROUTE 2796 (U.S. RTE. 40)
SECTION (L,K)I-2

MULTI-USE PATH
EFFINGHAM COUNTY

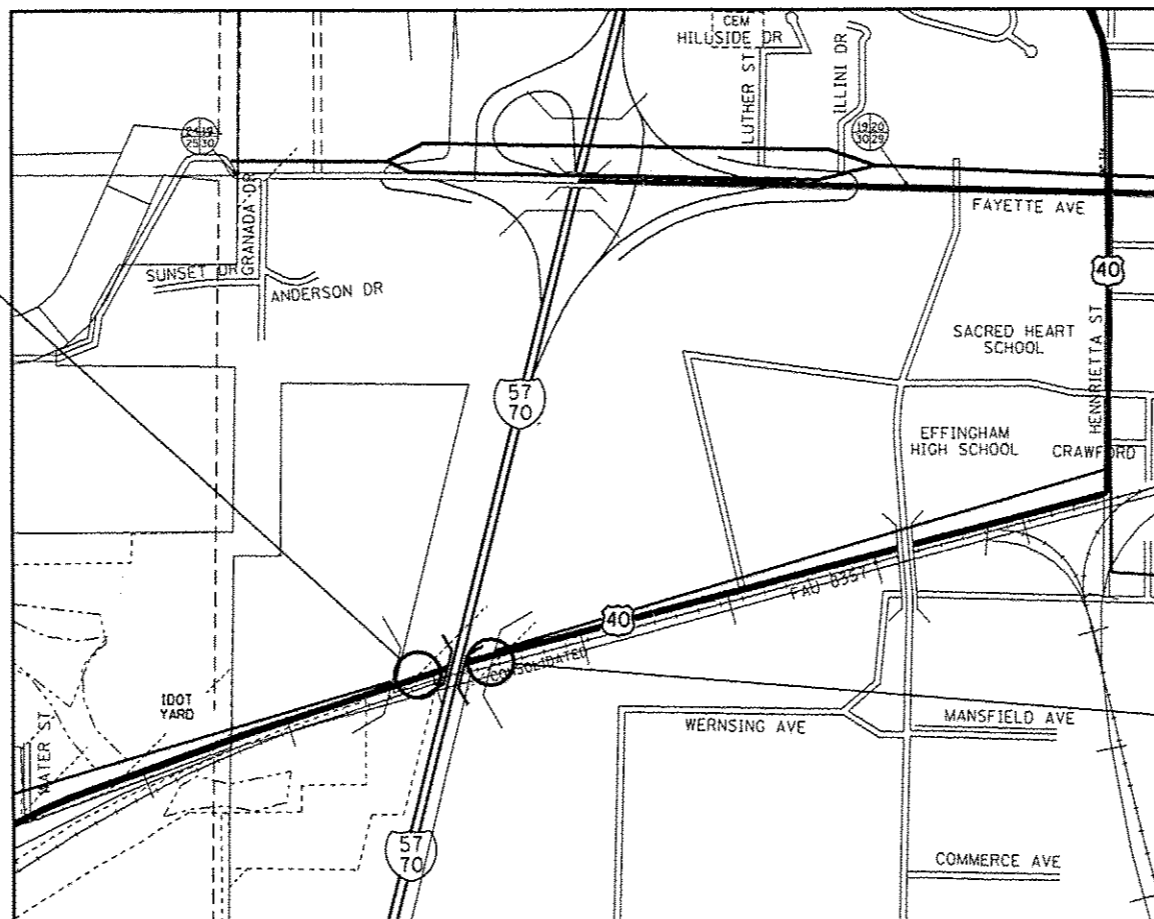
C-97-077-08

F.A.S. RTE.	SECTION	COUNTY	TOTAL SHEETS	SHEET NO.
2796	(L,K)I-2	EFFINGHAM	22	1
		ILLINOIS	CONTRACT NO. 74316	

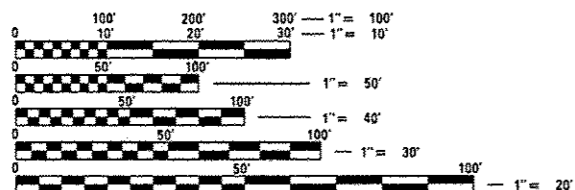
D-97-032-08



PROJECT BEGINS:
STATION 1404 + 16.82



PROJECT ENDS:
STATION 1408 + 89.21



FULL SIZE PLANS HAVE BEEN PREPARED USING STANDARD ENGINEERING SCALES. REDUCED SIZED PLANS WILL NOT CONFORM TO STANDARD SCALES. IN MAKING MEASUREMENTS ON REDUCED PLANS, THE ABOVE SCALES MAY BE USED.

J.U.L.I.E.
JOINT UTILITY LOCATION INFORMATION FOR EXCAVATION
1-800-892-0123
OR 811

PROJECT ENGINEER: TOM RONAN
PROJECT MANAGER: JEFF DAVISON
PHONE: (217)-342-8340
CONTRACT NO. 74316

GROSS LENGTH = 2801.3 FT. = 0.53 MILE
NET LENGTH = 2801.3 FT. = 0.53 MILE

STATE OF ILLINOIS
DEPARTMENT OF TRANSPORTATION
DIVISION OF HIGHWAYS

SUBMITTED Oct 19 20 12
Roger L. Driskell /ccs
DEPUTY DIRECTOR OF HIGHWAYS, REGION ENGINEER

Dec 2 20 12
John D. Baranzelli, PE /a
ENGINEER OF DESIGN AND ENVIRONMENT

Dec 2 20 12
William B. Frey /a
DIRECTOR OF HIGHWAYS, CHIEF ENGINEER

**PRINTED BY THE AUTHORITY
OF THE STATE OF ILLINOIS**

SUMMARY OF QUANTITIES			URBAN TOTAL QUANTITIES	CONSTRUCTION TYPE CODE		
CODE NO	ITEM	UNIT		100% STATE 0021		
20200100	EARTH EXCAVATION	CU YD	4	4		
20400800	FURNISHED EXCAVATION	CU YD	569	569		
20700220	POROUS GRANULAR EMBANKMENT	CU YD	138	138		
21400100	GRADING AND SHAPING DITCHES	FOOT	1311	1311		
28000250	TEMPORARY EROSION CONTROL SEEDING	POUND	14	14		
35101600	AGGREGATE BASE COURSE, TYPE B 4"	SO YD	334	334		
42400300	PORTLAND CEMENT CONCRETE SIDEWALK 6 INCH	SO FT	3029	3029		
44000400	GUTTER REMOVAL	FOOT	169	169		
48101200	AGGREGATE SHOULDERS, TYPE B	TON	36	36		
48300700	PORTLAND CEMENT CONCRETE SHOULDERS 12"	SO YD	337	337		
48301000	PROTECTIVE COAT	SO YD	442	442		
50104650	SLOPE WALL REMOVAL	SO YD	88	88		
50105220	PIPE CULVERT REMOVAL	FOOT	73	73		
50901750	PARAPET RAILING	FOOT	298	298		

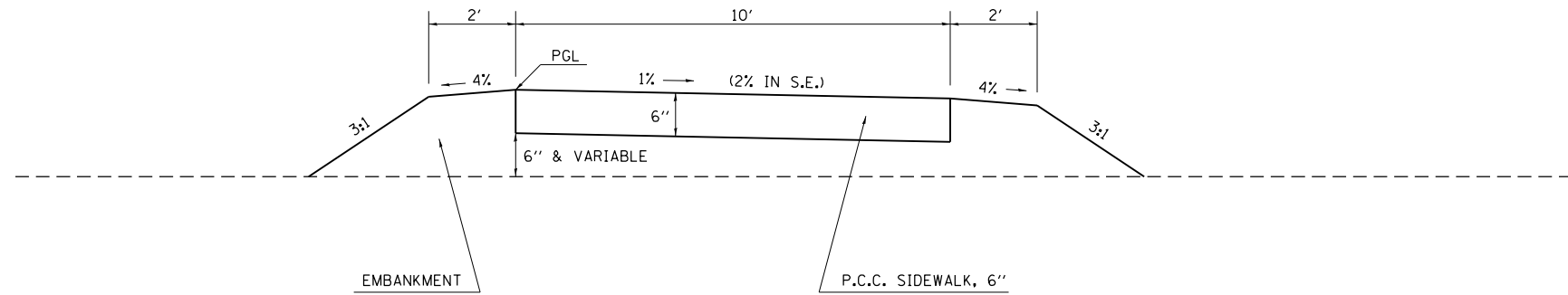
SUMMARY OF QUANTITIES			URBAN TOTAL QUANTITIES	CONSTRUCTION TYPE CODE		
CODE NO	ITEM	UNIT		100% STATE 0021		
54213669	PRECAST REINFORCED CONCRETE FLARED END SECTIONS 24"	EACH	1	1		
54213675	PRECAST REINFORCED CONCRETE FLARED END SECTIONS 30"	EACH	1	1		
54213681	PRECAST REINFORCED CONCRETE FLARED END SECTIONS 36"	EACH	2	2		
54215979	REINFORCED CONCRETE PIPE ELBOW 24"	EACH	1	1		
54215991	REINFORCED CONCRETE PIPE ELBOW 36"	EACH	2	2		
54217700	REINFORCED CONCRETE PIPE TEE, 36" PIPE WITH 24" RISER	EACH	1	1		
542A0229	PIPE CULVERTS, CLASS A, TYPE 1 24"	FOOT	13	13		
542A0241	PIPE CULVERTS, CLASS A, TYPE 1 36"	FOOT	88	88		
542A1075	PIPE CULVERTS, CLASS A, TYPE 2 30"	FOOT	24	24		
60100905	PIPE DRAINS 4"	FOOT	227	227		
60250500	CATCH BASINS TO BE ADJUSTED WITH NEW TYPE 1 FRAME, CLOSED LID	EACH	2	2		

SUMMARY OF QUANTITIES			URBAN TOTAL QUANTITIES	CONSTRUCTION TYPE CODE		
CODE NO	ITEM	UNIT		100% STATE Q021		
63000001	STEEL PLATE BEAM GUARD RAIL, TYPE A, 6 FOOT POSTS	FOOT	187.5	187.5		
63100085	TRAFFIC BARRIER TERMINAL, TYPE 6	EACH	2	2		
63100167	TRAFFIC BARRIER TERMINAL, TYPE 1 (SPECIAL) TANGENT	EACH	2	2		
63700275	CONCRETE BARRIER, DOUBLE FACE, 42 INCH HEIGHT	FOOT	298	298		
67000500	ENGINEER'S FIELD OFFICE, TYPE B	CAL MO	2	2		
67100100	MOBILIZATION	L SUM	1	1		
70100450	TRAFFIC CONTROL AND PROTECTION, STANDARD 701201	L SUM	1	1		
70100460	TRAFFIC CONTROL AND PROTECTION, STANDARD 701306	L SUM	1	1		
70103815	TRAFFIC CONTROL SURVEILLANCE	CAL DA	2	2		
78200420	GUARDRAIL MARKERS, TYPE B	EACH	5	5		
78201000	TERMINAL MARKER - DIRECT APPLIED	EACH	2	2		
XX003308	TRENCH DRAIN	FOOT	169	169		

SUMMARY OF QUANTITIES			URBAN TOTAL QUANTITIES	CONSTRUCTION TYPE CODE		
CODE NO	ITEM	UNIT		100% STATE Q021		
X0322936	REMOVE EXISTING FLARED END SECTION	EACH	2	2		
X0326649	LINEAR DELINEATOR PANELS, 6 INCH	EACH	6	6		
X2501000	SEEDING, CLASS 2 (SPECIAL)	ACRE	0.1	0.1		
X4240440	PORTLAND CEMENT CONCRETE SIDEWALK 6 INCH, SPECIAL	SO FT	1695	1695		

P.C.C. SIDEWALK, 6"

STA. 1404+16.82 TO STA. 1405+40.20 (U.S. 40)
 STA. 1407+09.60 TO STA. 1408+89.21 (U.S. 40)

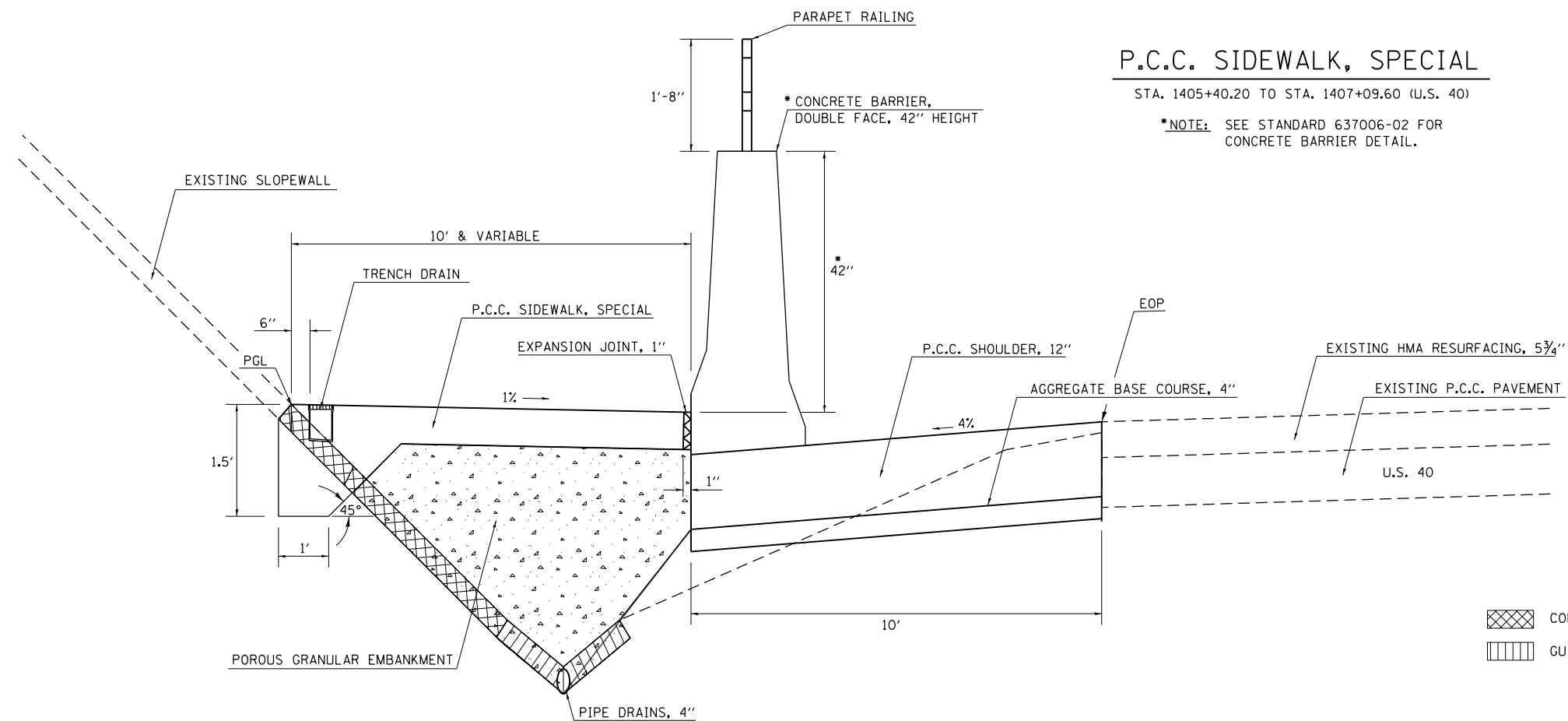


NOTE: NOT DRAWN TO SCALE

P.C.C. SIDEWALK, SPECIAL

STA. 1405+40.20 TO STA. 1407+09.60 (U.S. 40)

*NOTE: SEE STANDARD 637006-02 FOR CONCRETE BARRIER DETAIL.



NOTE: NOT DRAWN TO SCALE

- CONCRETE SLOPE WALL REMOVAL
- GUTTER REMOVAL

FILE NAME =	USER NAME = steffenmk	DESIGNED -	REVISED -
ct:\pwork\pwork\steffenmk\dms50671\0774316-sh-typicals.dgn		DRAWN -	REVISED -
		CHECKED -	REVISED -
		DATE -	REVISED -

STATE OF ILLINOIS
 DEPARTMENT OF TRANSPORTATION

TYPICAL CROSS SECTIONS

SCALE: NA SHEET NO. 1 OF 1 SHEETS STA. TO STA.

F.A.S. RTE.	SECTION	COUNTY	TOTAL SHEETS	SHEET NO.
2796	(L,K)I-2	EFFINGHAM	22	5
				CONTRACT NO. 74316
ILLINOIS FED. AID PROJECT				

DRAINAGE SCHEDULE

LOCATION	CATCH BASINS TO BE ADJUSTED W/ NEW TYPE 1 FRAME, CLOSED LID	PIPE DRAINS, 4"	TRENCH DRAIN	PIPE CULVERT REMOVAL	REMOVE EXISTING FLARED END SECTION	PRECAST REINFORCED CONCRETE FLARED END SECTION, 24"	PRECAST REINFORCED CONCRETE FLARED END SECTION, 30"	PRECAST REINFORCED CONCRETE FLARED END SECTION, 36"	PIPE CULVERTS, CLASS A, TYPE 1, 24"	PIPE CULVERTS, CLASS A, TYPE 2, 30"	PIPE CULVERTS, CLASS A, TYPE 1, 36"	REINFORCED CONCRETE PIPE ELBOW, 24"	REINFORCED CONCRETE PIPE ELBOW, 36"	REINFORCED CONCRETE PIPE TEE, 36" W/ 24" RISER
	EACH	EACH	EACH	FOOT	EACH	FOOT	EACH	EACH	FOOT	FOOT	FOOT	FOOT	FOOT	FOOT
1401+84.28 TO 1402+20.29, 21.6' LT.				36.0										
1404+41.07/53.6' LT.					1.0									
1404+41.07/53.6' LT. TO 1404+53.81/ 74.4' LT.										24.0				
1404+53.08/74.7' LT.							1.0							
1405+29.93/31.8' LT.	1.0													
1405+29.93/31.6' LT. TO 1405+40.18/32.3' LT		10.3												
1405+29.93/31.6' LT. TO 1405+38.35/26.4' LT.		9.9												
1405+40.18/32.3' LT. TO 1407+09.63/32.1' LT.			169.0											
1405+38.35/26.4' LT. TO 1407+07.24/26.2' LT.		168.9												
1407+27.30/29.5' LT.	1.0													
1407+07.24/26.2' LT. TO 1407+27.30/29.5' LT.		20.3												
1407+07.24/32.1' LT. TO 1407+27.30/29.5' LT.		17.8												
1407+83.77/46.4' LT.					1.0									
1407+87.77/46.4' LT.													1.0	
1407+95.09/43.2' LT.													1.0	
1407+99.08/42.9' LT. TO 1408+87.01/43.0' LT.										88.0				
1408+08.34/42.9' LT.														1.0
1408+08.34/43.0' LT TO 1408+10.30/55.6' LT.									13.0					
1408+08.34/51.0' LT.												1.0		
1408+86.27/43.0' LT. TO 1409+22.77/43.0' LT.				37.0										
1408+10.30/55.6' LT.						1.0								
1408+87.01/43.0' LT.								1.0						
PROJECT TOTAL =	2.0	227.2	169.0	73.0	2.0	1.0	1.0	1.0	13.0	24.0	88.0	1.0	2.0	1.0

FILE NAME =	USER NAME = steffenmk	DESIGNED -	REVISED -
ci:\pw\work\p\dot\stefenmk\dms50671\74316-sh-t-sch.dgn		DRAWN -	REVISED -
		CHECKED -	REVISED -
		DATE -	REVISED -

STATE OF ILLINOIS
DEPARTMENT OF TRANSPORTATION

SCHEDULE OF QUANTITIES

SCALE: NA SHEET NO. 1 OF 2 SHEETS STA. TO STA.

F.A.S. RTE.	SECTION	COUNTY	TOTAL SHEETS	SHEET NO.
2796	(L,K)I-2	EFFINGHAM	22	6
CONTRACT NO. 74316			ILLINOIS FED. AID PROJECT	

GUARDRAIL SCHEDULE

STATION	LOCATION	STEEL PLATE BEAM GUARDRAIL, TYPE A, 6 FOOT POSTS	TRAFFIC BARRIER TERMINAL, TYPE 1 SPECIAL (TANGENT)	TRAFFIC BARRIER TERMINAL, TYPE 6	GUARDRAIL MARKERS, TYPE B (CRYSTAL)	GUARDRAIL MARKERS, TYPE C (CRYSTAL)	TERMINAL MARKERS-DIRECT APPLIED
FEET	EACH	EACH	EACH	EACH	EACH	EACH	EACH
1404+02.71			1.0				1.0
1404+52.76		50.0			1.0		
1404+98.40				1.0	1.0		
1407+94.35						3.0	
1408+37.45				1.0	1.0		
1409+75.95		137.5			1.0		
1410+24.95			1.0		1.0		1.0
PROJECT TOTAL =		187.5	2.0	2.0	5.0	3.0	2.0

SIDEWALK SCHEDULE

STATION TO STATION	LENGTH FEET	PAVEMENT WIDTH FEET	AREA SQ FT	PCC SIDEWALK, 6" SQ FT	PCC SIDEWALK, SPECIAL TON
1404+16.82 TO 1405+40.20	123.38	10.0	1,233.8	1233.8	0.0
1405+40.20 TO 1407+09.60	0.00	10.0	0.0	0.0	0.0
1407+09.60 TO 1408+89.21	0.00	10.0	0.0	0.0	0.0
PROJECT TOTAL =		123	1,234	1,234	0

SEEDING SCHEDULE

LOCATION	SEEDING, CLASS 2 (SPL) ACRE	TEMPORARY EROSION CONTROL SEEDING POUND
US 51		
1404+16.82 TO 1408+89.21	0.14	14.00
PROJECT TOTAL =		0.14 14

CONCRETE BARRIER, DOUBLE FACE, 42" HEIGHT

LOCATION	LENGTH (FEET)	
1404+95.90 TO 1407+94.35	298.5	
PROJECT TOTAL =		298.5

AGGREGATE SHOULDERS, TYPE B

LOCATION	LENGTH (FEET)	WIDTH LEFT (FEET)	AVE THICK (INCH)	VOLUME (CU YD)	QUANTITY (TON)
US 40					
1403+52.67 TO 1404+94.91	142.2	7.0	1.50	124.5	10.0
1407+95.67 TO 1410+24.95	229.3	12.0	1.50	343.9	26.0
PROJECT TOTAL =					36.0

EARTHWORK SCHEDULE

Location	Earth Excavation CU. YD.	Earth Excavation Adj. for Shrinkage CU. YD.	Embankment CU. YD.	Earthwork Balance Waste (+)/Shortage (-) CU. YD.
1404+00.00 TO 1409+00.00 (STATE SECTION)	4.0	3.0	572.0	-569.0
PROJECT TOTAL =		4.0	3.00	572.0 -569.0

POROUS GRANULAR EMBANKMENT


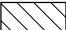
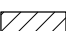

LOCATION	LENGTH	AREA SQ. FT.	QUANTITY CU. YD.
1405+38.20 TO 1407+09.59	171.4	3,728.0	138.1
PROJECT TOTAL =			138.0

AGGREGATE BASE COURSE, 4"

LOCATION	LENGTH	WIDTH FEET	QUANTITY SQ. YD.
1404+94.91 TO 1407+95.37	300.5	10.0	333.8
PROJECT TOTAL =			334.0

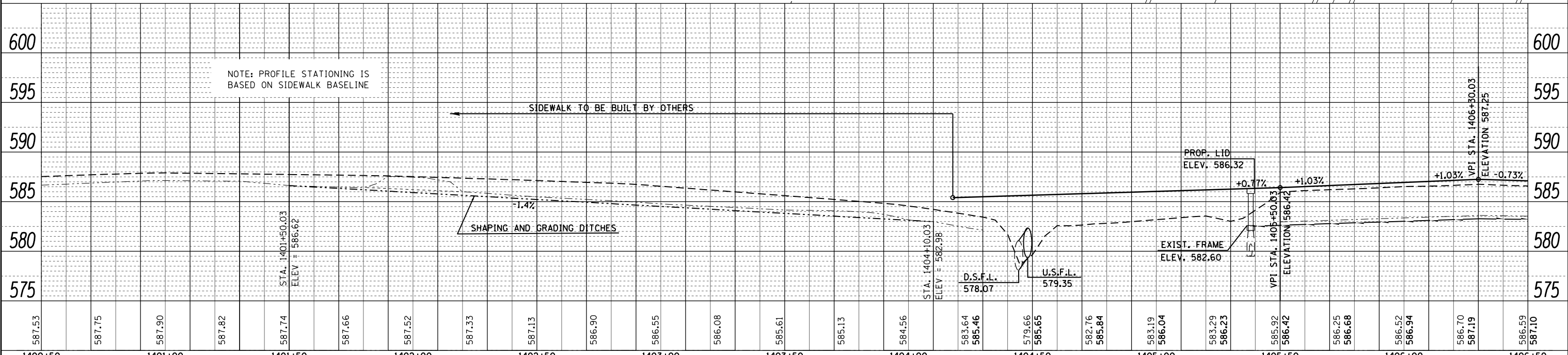
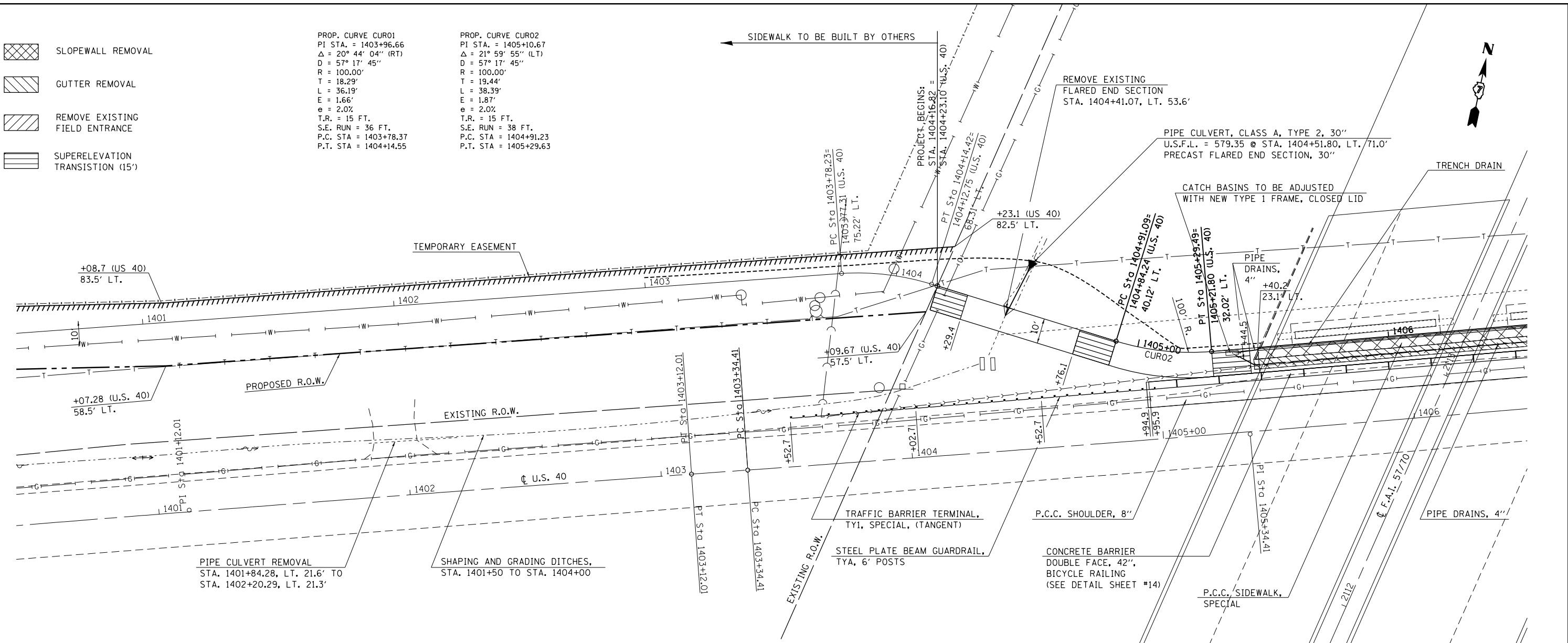
PLAN	SURVEYED	DATE
	PLOTTED	BY
	NOTE BOOK	NO.
	ALIGNED	CHECKED
	FILE NAME	

PROFILE	SURVEYED	DATE
	PLOTTED	BY
	NOTE BOOK	NO.
	GRADES CHECKED	
	STRUCTURE	NOTATIONS CHECKED

-  SLOPEWALL REMOVAL
-  GUTTER REMOVAL
-  REMOVE EXISTING FIELD ENTRANCE
-  SUPERELEVATION TRANSITION (15')

PROP. CURVE CUR01
 PI STA. = 1403+96.66
 $\Delta = 20^\circ 44' 04''$ (RT)
 $D = 57^\circ 17' 45''$
 $R = 100.00'$
 $T = 18.29'$
 $L = 36.19'$
 $E = 1.66'$
 $e = 2.0\%$
 $T.R. = 15$ FT.
 $S.E. RUN = 36$ FT.
 $P.C. STA = 1403+78.37$
 $P.T. STA = 1404+14.55$

PROP. CURVE CUR02
 PI STA. = 1405+10.67
 $\Delta = 21^\circ 59' 55''$ (LT)
 $D = 57^\circ 17' 45''$
 $R = 100.00'$
 $T = 19.44'$
 $L = 38.39'$
 $E = 1.87'$
 $e = 2.0\%$
 $T.R. = 15$ FT.
 $S.E. RUN = 38$ FT.
 $P.C. STA = 1404+91.23$
 $P.T. STA = 1405+29.63$



FILE NAME =	USER NAME = steffenmk	DESIGNED -	REVISED -
c:\pwork\pwork\stefmk\dms50671\0774316-sht-plnprof.dgn		DRAWN -	REVISED -
PLOT SCALE = 40.0000' / in.		CHECKED -	REVISED -
PLOT DATE = 10/2/2012		DATE -	REVISED -

**STATE OF ILLINOIS
 DEPARTMENT OF TRANSPORTATION**

SIDEWALK PLAN

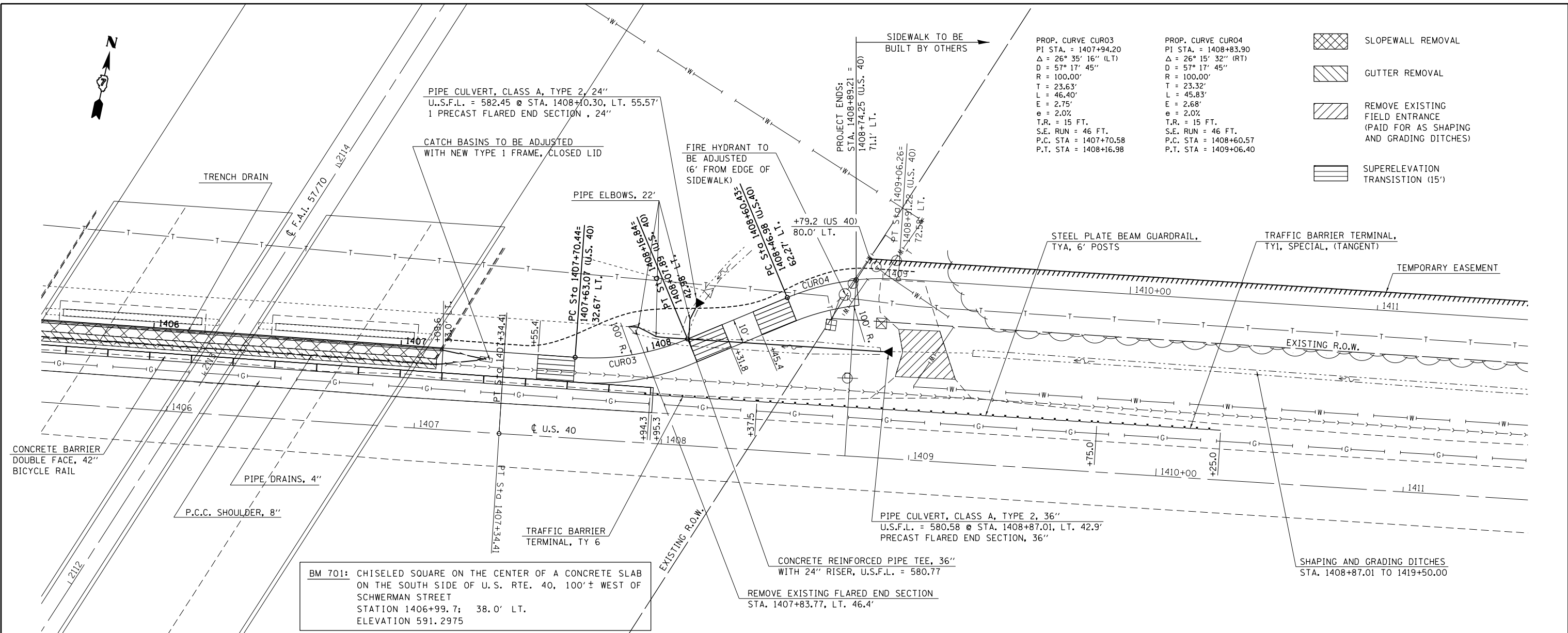
SCALE: 20 SHEET NO. 2 OF 5 SHEETS STA. 1400+50 TO STA. 1406+50

F.A.S. RTE.	SECTION	COUNTY	TOTAL SHEETS	SHEET NO.
2796	(L,K)I-2	EFFINGHAM	22	9
CONTRACT NO. 74316			ILLINOIS FED. AID PROJECT	



PLAN	SURVEYED	DATE
	PLOTTED	BY
	GRADES CHECKED	
	STRUCTURE NOTATIONS CHECKED	
	NOTE BOOK NO.	
	CADD FILE NAME	

PROFILE	SURVEYED	DATE
	PLOTTED	BY
	GRADES CHECKED	
	STRUCTURE NOTATIONS CHECKED	
	NOTE BOOK NO.	
	CADD FILE NAME	

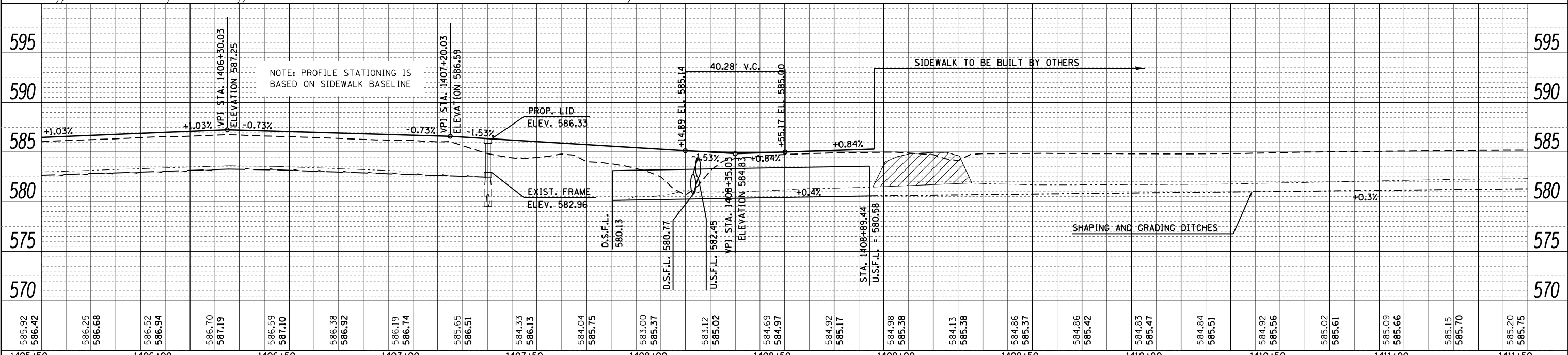


PROP. CURVE CUR03
 PI STA. = 1407+94.20
 $\Delta = 26^\circ 35' 16''$ (LT)
 $D = 57^\circ 17' 45''$
 $R = 100.00'$
 $T = 23.63'$
 $L = 46.40'$
 $E = 2.75'$
 $e = 2.0\%$
 $T.R. = 15$ FT.
 $S.E. RUN = 46$ FT.
 $P.C. STA = 1407+70.58$
 $P.T. STA = 1408+16.98$

PROP. CURVE CUR04
 PI STA. = 1408+83.90
 $\Delta = 26^\circ 15' 32''$ (RT)
 $D = 57^\circ 17' 45''$
 $R = 100.00'$
 $T = 23.32'$
 $L = 45.83'$
 $E = 2.68'$
 $e = 2.0\%$
 $T.R. = 15$ FT.
 $S.E. RUN = 46$ FT.
 $P.C. STA = 1408+60.57$
 $P.T. STA = 1409+06.40$

- SLOPEWALL REMOVAL
- GUTTER REMOVAL
- REMOVE EXISTING FIELD ENTRANCE (PAID FOR AS SHAPING AND GRADING DITCHES)
- SUPERELEVATION TRANSITION (15')

BM 701: CHISELED SQUARE ON THE CENTER OF A CONCRETE SLAB ON THE SOUTH SIDE OF U.S. RTE. 40, 100' ± WEST OF SCHERMAN STREET STATION 1406+99.7; 38.0' LT. ELEVATION 591.2975

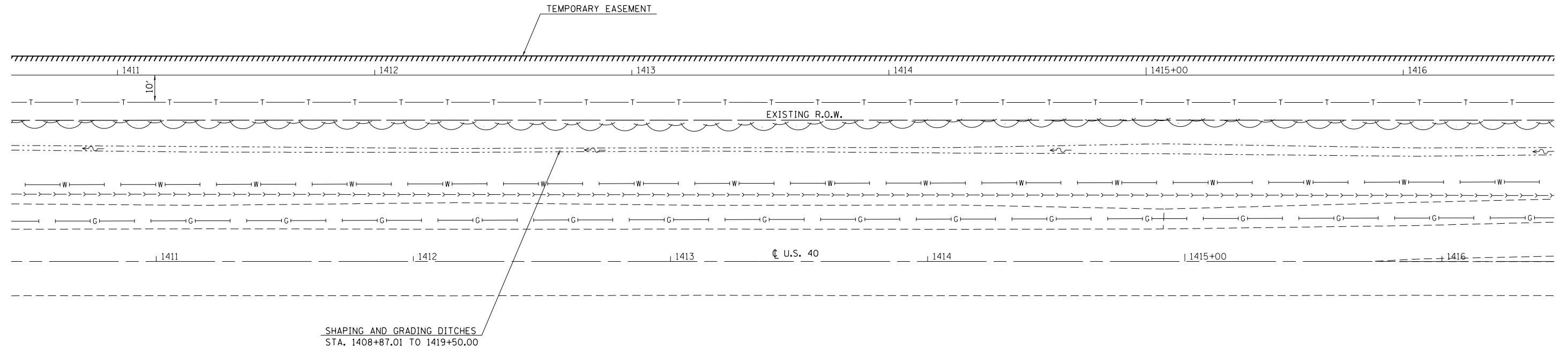


FILE NAME =	USER NAME =	DESIGNED -	REVISED -	STATE OF ILLINOIS DEPARTMENT OF TRANSPORTATION	SIDEWALK PLAN	F.A.S. RTE.	SECTION	COUNTY	TOTAL SHEETS	SHEET NO.	
c:\pwork\pwork\stef\enmk\dms50671\0774316-sht-plnprof.dgn	316-sht-plnprof.dgn	DRAWN -	REVISED -			2796	(L,K)I-2	EFFINGHAM	22	10	
PLOT SCALE = 40.0000' / in.	CHECKED -	REVISED -	SCALE: 20			SHEET NO. 3 OF 5 SHEETS	STA. 1405+50 TO STA. 1411+50	CONTRACT NO. 74316			
PLOT DATE = 10/2/2012	DATE -	REVISED -	ILLINOIS FED. AID PROJECT								



PLAN	SURVEYED	BY	DATE
	PLOTTED		
	ALIGNED		
	CHECKED		
	FILE NAME		
	NO.		

PROFILE	SURVEYED	BY	DATE
	PLOTTED		
	GRADES CHECKED		
	STRUCTURE		
	NOTATIONS		
	CHKD		



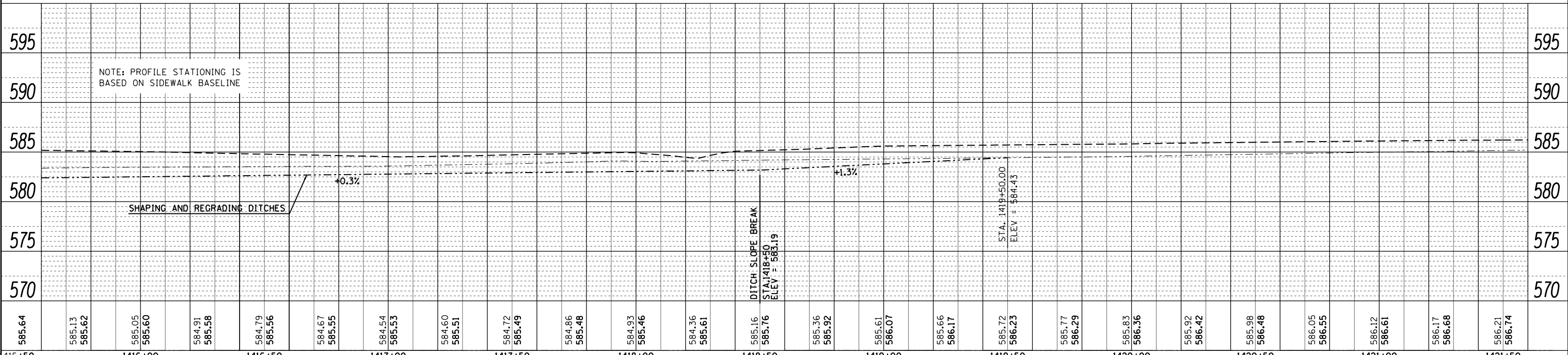
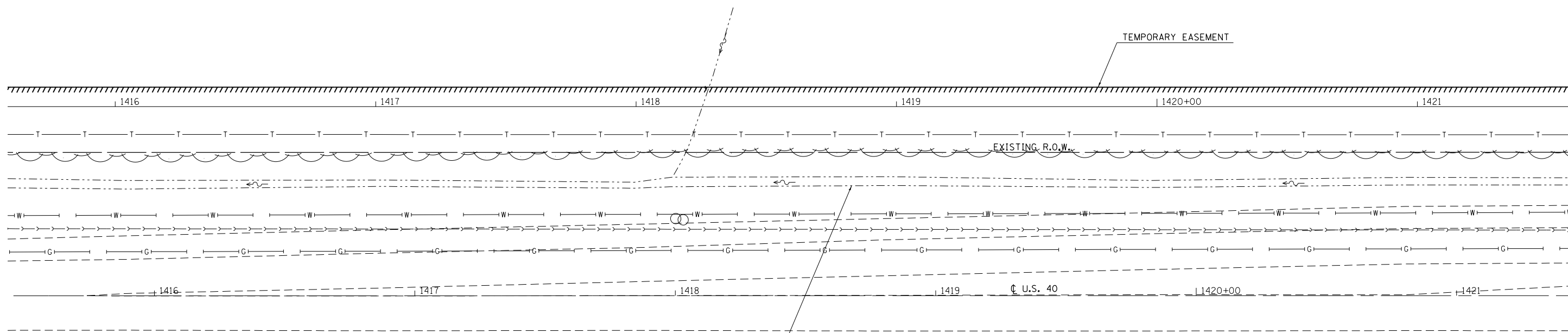
595	NOTE: PROFILE STATIONING IS BASED ON SIDEWALK BASELINE																				595																											
590																					590																											
585																					585																											
580																					580																											
575																					575																											
570																					570																											
585.56	585.02	585.61	585.09	585.66	585.15	585.70	585.20	585.75	585.25	585.80	585.33	585.85	585.41	585.87	585.42	585.85	585.39	585.83	585.36	585.81	585.33	585.80	585.40	585.78	585.45	585.76	585.49	585.74	585.53	585.72	585.47	585.71	585.42	585.69	585.37	585.67	585.29	585.65	585.21	585.64	585.13	585.62	585.05	585.60	584.91	585.58	584.79	585.56

410+50	1411+00	1411+50	1412+00	1412+50	1413+00	1413+50	1414+00	1414+50	1415+00	1415+50	1416+00	1416+50																			
FILE NAME = c:\pwork\pwidot\stefennk\dms50671\0774316-sht-plnprof.dgn				USER NAME = stefennk				DESIGNED -				REVISED -																			
PLOT SCALE = 40.0000' / in.				CHECKED -				REVISED -				REVISED -																			
PLOT DATE = 10/2/2012				DATE -				REVISED -				REVISED -																			
STATE OF ILLINOIS DEPARTMENT OF TRANSPORTATION												SIDEWALK PLAN																			
SCALE: 20				SHEET NO. 4 OF 5 SHEETS				STA. 1410+50 TO STA. 1416+50				F.A.S. RTE. 2796				SECTION (L,K)I-2				COUNTY EFFINGHAM				TOTAL SHEETS 22				SHEET NO. 11			
												CONTRACT NO. 74316																			
ILLINOIS FED. AID PROJECT																															



PLAN	SURVEYED	BY	DATE
	PLOTTED		
	ALIGNED		
	CHECKED		
	FILE NAME		
	NO.		

PROFILE	SURVEYED	BY	DATE
	PLOTTED		
	GRADES CHECKED		
	STRUCTURE		
	NOTATIONS		
	CHKD		



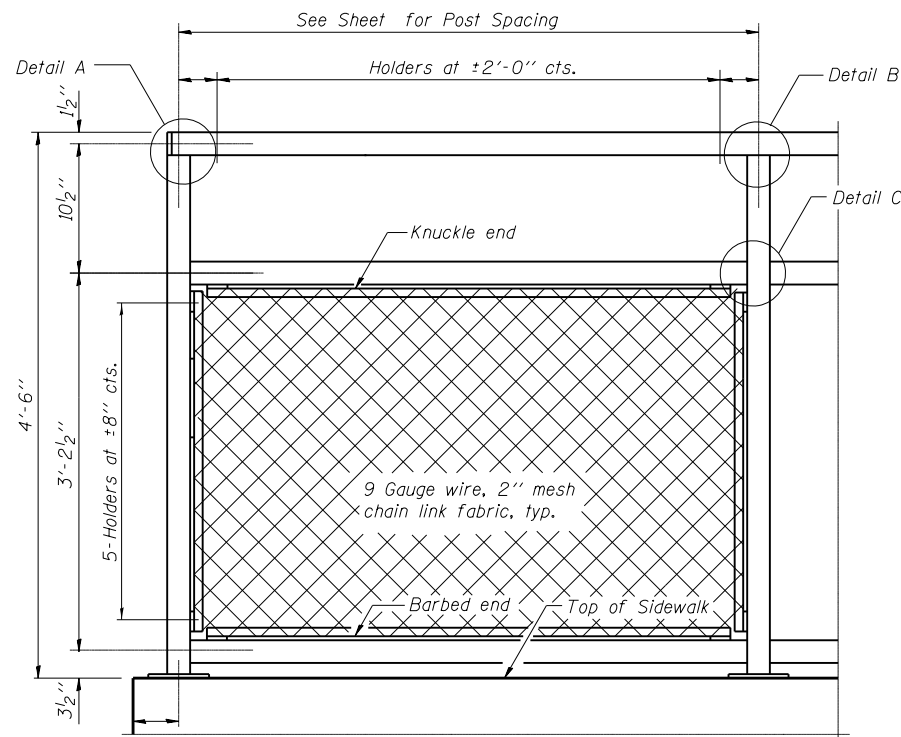
FILE NAME =	USER NAME = steffennk	DESIGNED -	REVISED -
c:\pwork\pwidot\stefennk\dms50671\0774316-sht-plnprof.dgn		DRAWN -	REVISED -
PLOT SCALE = 40.0000' / in.		CHECKED -	REVISED -
PLOT DATE = 10/2/2012		DATE -	REVISED -

**STATE OF ILLINOIS
DEPARTMENT OF TRANSPORTATION**

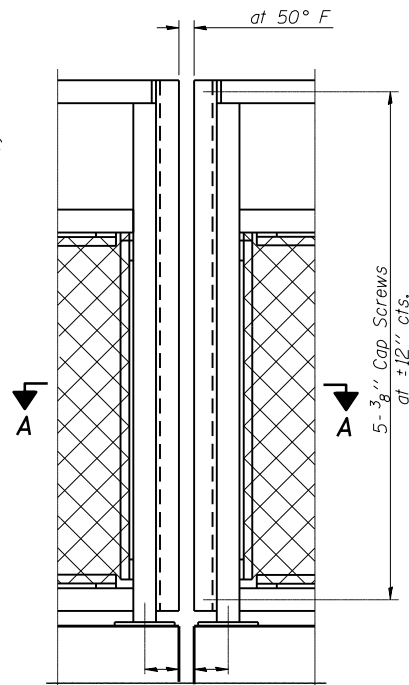
SIDEWALK PLAN

SCALE: 20 SHEET NO. 5 OF 5 SHEETS STA. 1415+50 TO STA. 1421+50

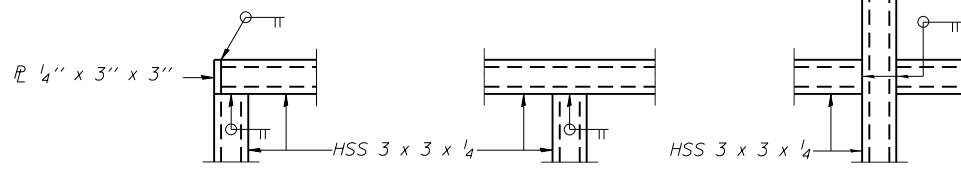
F.A.S. RTE.	SECTION	COUNTY	TOTAL SHEETS	SHEET NO.
2796	(L,K)I-2	EFFINGHAM	22	12
CONTRACT NO. 74316			ILLINOIS FED. AID PROJECT	



BICYCLE RAILING



BICYCLE RAILING

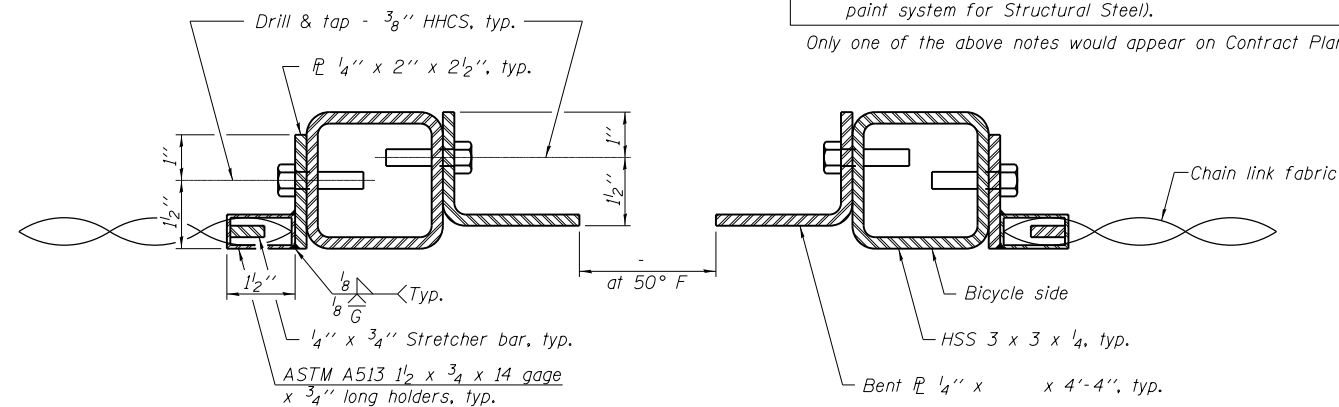


DETAIL A

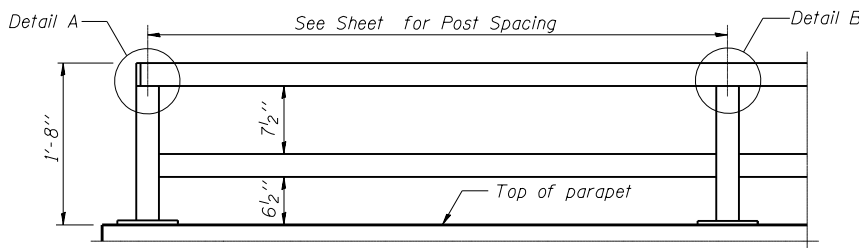
DETAIL B

DETAIL C

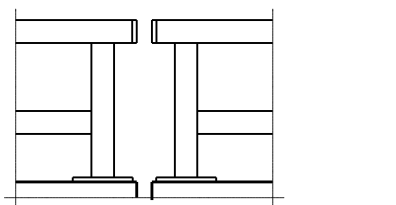
The designer should add the appropriate note as applicable.
 A. When railing is galvanized:
 All steel rail elements shall be galvanized according to Article 509.05 of the Standard Specifications.
 B. When railing is painted:
 All post, railing, splices, anchor devices, and bent plates shall be painted using the (List the appropriate paint system for Structural Steel).
 Only one of the above notes would appear on Contract Plans.



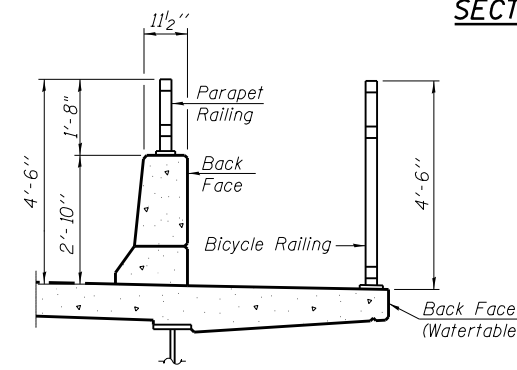
SECTION A-A



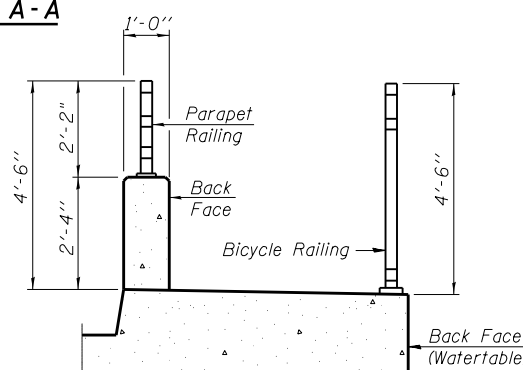
**PARAPET RAILING
ELEVATION**
(Inside Face of Two Element Rail)



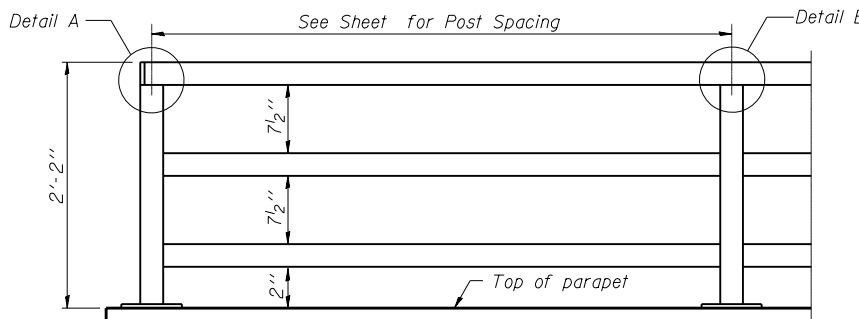
**PARAPET RAILING
ELEVATION AT EXPANSION JOINT**
(Two Element Rail Shown - Three Element Rail Similar)



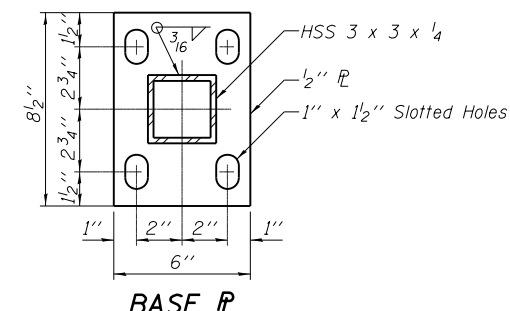
SECTION THRU DECK



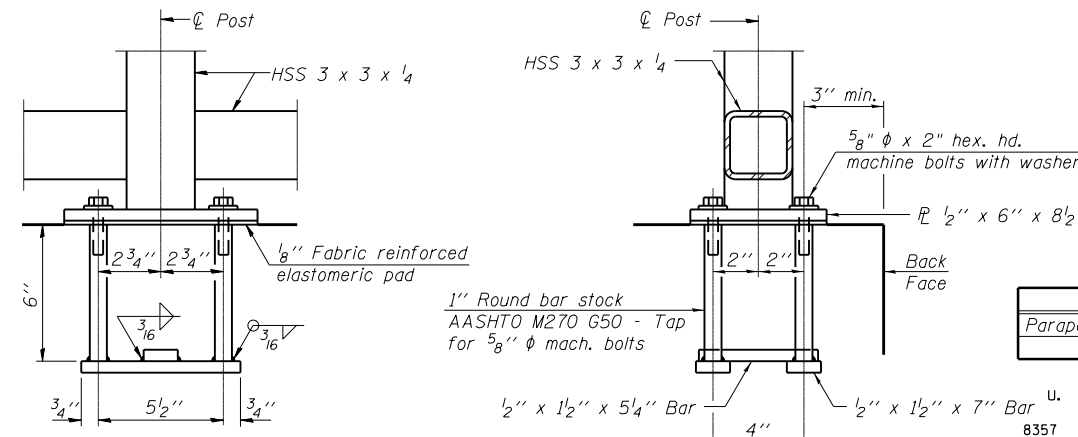
SECTION THRU SIDEWALK



**PARAPET RAILING
ELEVATION**
(Inside Face of Three Element Rail)



BASE PL

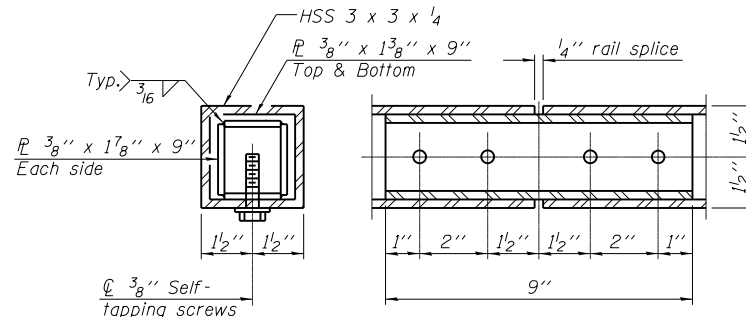


ANCHOR BOLT DETAILS

In lieu of the cast-in-place anchor device shown, the Contractor has the option of drilling and setting 5/8" phi anchor rods according to Article 509.06 of the Standard Specifications. Embedment shall be according to the manufacturer's specifications.

BILL OF MATERIAL

Item	Unif	Quantity
Parapet Railing	Foot	298



RAIL SPLICE

R-29 11-1-09 (10'-0" Maximum Post Spacing)

FILE NAME	USER NAME	DESIGNED	REVISED
ei:\pwork\pwork\dtdot\steffenmk\dms50671\74316-shr-details.dgn	steffenmk	-	-
		DRAWN	REVISED
		CHECKED	REVISED
		DATE	REVISED

DESIGNED	REVISED
-	-
-	-
-	-
-	-

STATE OF ILLINOIS
DEPARTMENT OF TRANSPORTATION

PARAPET RAILING DETAIL

SCALE: NA SHEET NO. 1 OF 1 SHEETS STA. TO STA.

F.A.S. RTE.	SECTION	COUNTY	TOTAL SHEETS	SHEET NO.
2796	(L,K)I-2	EFFINGHAM	22	13
			CONTRACT NO. 74316	

**BICYCLE RAILING
STRUCTURE NO.**

(L,K)I-2

ILLINOIS FED. AID PROJECT

DATE	
BY	
FINAL SURVEY NO.	
SURVEYED PLOTTED	
NOTE BOOK AREAS CHECKED	

DATE	
BY	
ORIGINAL SURVEY NO.	
SURVEYED PLOTTED	
NOTE BOOK AREAS CHECKED	

