

STATE OF ILLINOIS
DEPARTMENT OF TRANSPORTATION
DIVISION OF HIGHWAYS

**PROPOSED
HIGHWAY PLANS**

F.A.I. RTE. 70 & F.A.P. RTE. 328 (I-70/US45)
SECTION D7 BRIDGE PAINTING 2013-1

**BRIDGE PAINTING
FAYETTE & EFFINGHAM COUNTIES**

C-97-106-12

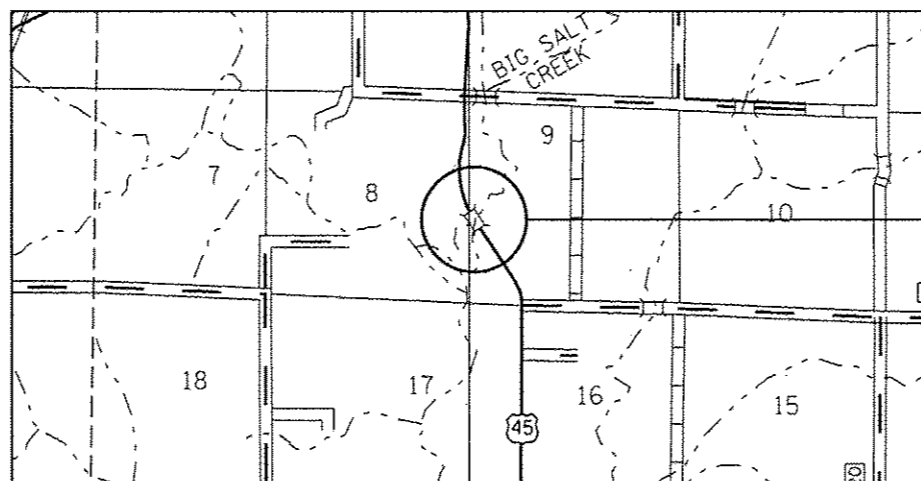
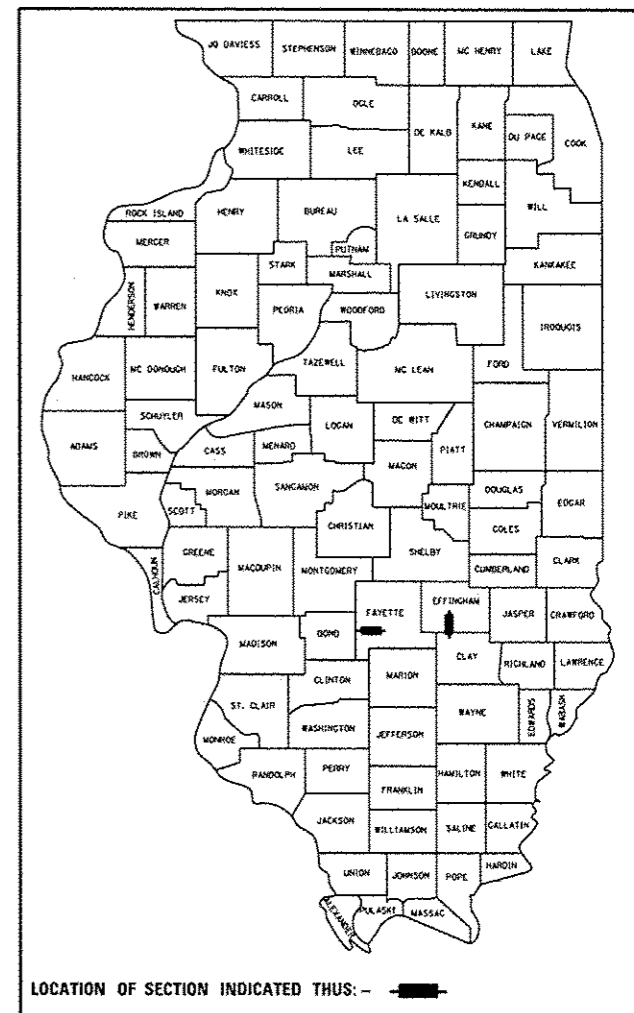
FOR INDEX OF SHEETS, SEE SHEET NO. 2

ADT LOCATION #1 = 2,600 (2011)
ADT LOCATION #2 = 20,300 (2010)

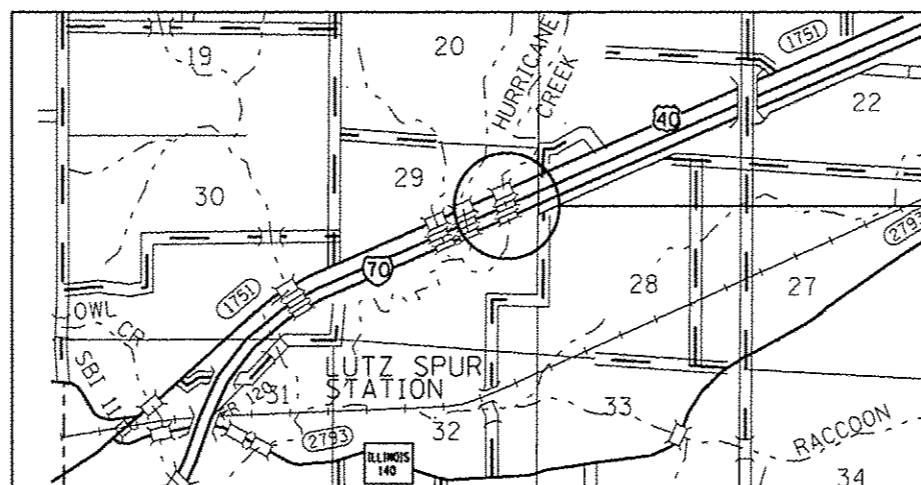
F.A. RTE.	SECTION	COUNTY	TOTAL SHEETS	SHEET NO.
D7	BRIDGE PAINTING 2013-1	ILLINOIS	11	1
			CONTRACT NO. 74579	

F.A.I. RTE. 70 & F.A.P. RTE. 328 (U.S. RTE. 45)
FAYETTE & EFFINGHAM COUNTIES

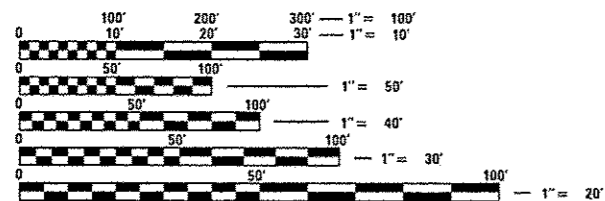
11+1=12



LOCATION #1
SN 025-0083
EFFINGHAM COUNTY



LOCATION #2
SN 026-0009
SN 026-0010
FAYETTE COUNTY



FULL SIZE PLANS HAVE BEEN PREPARED USING STANDARD ENGINEERING SCALES. REDUCED SIZED PLANS WILL NOT CONFORM TO STANDARD SCALES. IN MAKING MEASUREMENTS ON REDUCED PLANS, THE ABOVE SCALES MAY BE USED.

J.U.I.E.
JOINT UTILITY LOCATION INFORMATION FOR EXCAVATION
1-800-892-0123
OR 811

PROJECT ENGINEER: TOM RONAN
PROJECT MANAGER: TOM RONAN
PHONE: (217)-342-8320
CONTRACT NO. 74579

STATE OF ILLINOIS
DEPARTMENT OF TRANSPORTATION
DIVISION OF HIGHWAYS

SUBMITTED Oct 2 20 12
Roger L. Drishell/pcos
DEPUTY DIRECTOR OF HIGHWAYS, REGION ENGINEER

Dec 7 20 12
John D. Barancelli, P.E. /bl
ENGINEER OF DESIGN AND ENVIRONMENT

Dec 7 20 12
William R. Fray /bl
DIRECTOR OF HIGHWAYS, CHIEF ENGINEER

PRINTED BY THE AUTHORITY
OF THE STATE OF ILLINOIS