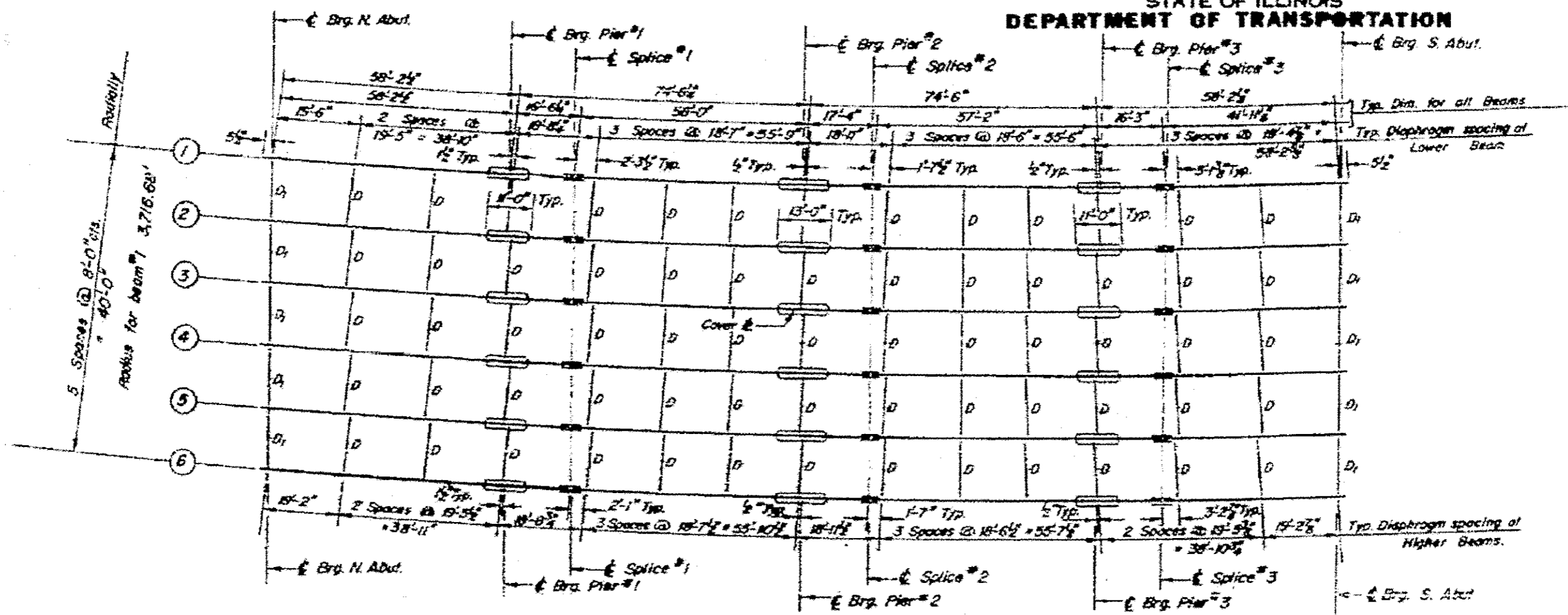
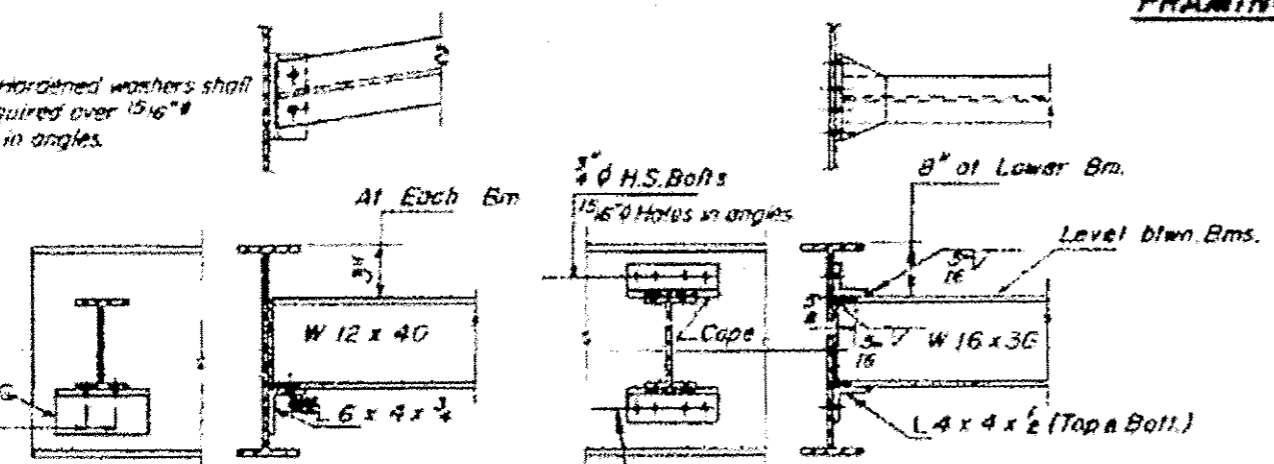


STATE OF ILLINOIS  
DEPARTMENT OF TRANSPORTATION



FRAMING PLAN

Note: Hardened washers shall be required over 15/16" holes in angles.



DIAPHRAGM D1  
10 Required

DIAPHRAGM D2  
65 Required

\*\* Band Angle to Fit Superstructure

FILE NAME -	USER NAME - steffenn	DESIGNED -	REVISED -	STATE OF ILLINOIS DEPARTMENT OF TRANSPORTATION	EXISTING STRUCTURE PLAN	F.A. RTE.	SECTION	COUNTY	TOTAL SHEETS	SHEET NO.
ohpwwork\pwwork\steffenn\100307205\1074579-shr-plandgn	PLOT SCALE = 1/8" = 1'-0"	DRAWN -	REVISED -			• DT BRIDGE PAINTING 2013-	••	••	11	7
Defaults	PLOT DATE = 10/23/2012	CHECKED -	REVISED -			SCALE: NA	SHEET 3 OF 7 SHEETS	STA.	TO STA.	CONTRACT NO. 74579
		DATE -	REVISED -							ILLINOIS FED. AID PROJECT

• F.A.I. RTE. 70 & F.A.P. RTE. 328 (U.S. RTE. 45)  
•• FAYETTE & EFFINGHAM COUNTIES