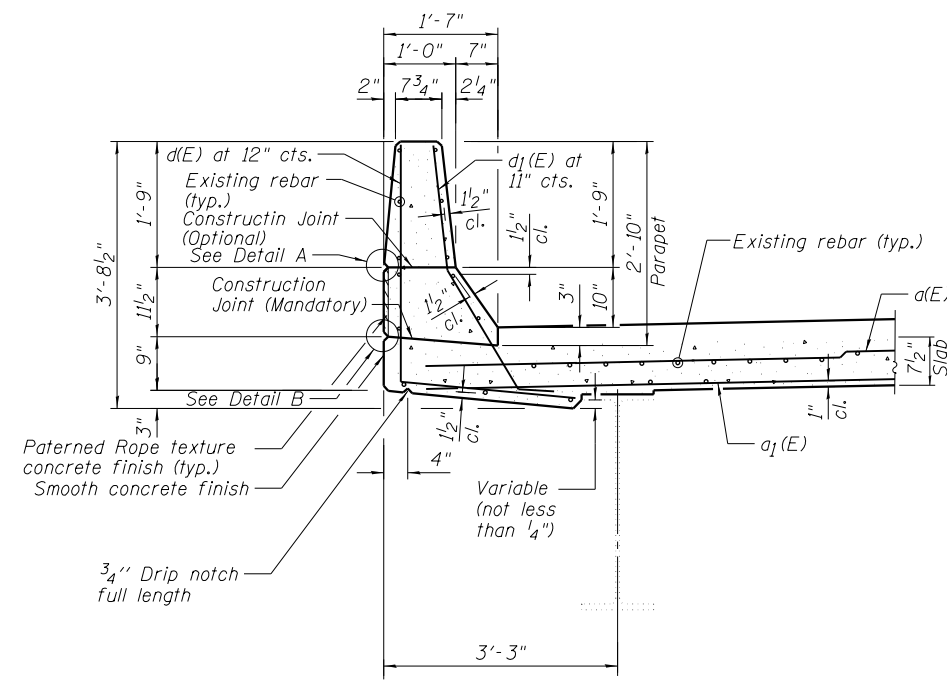
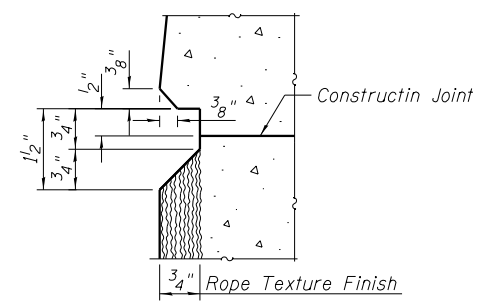


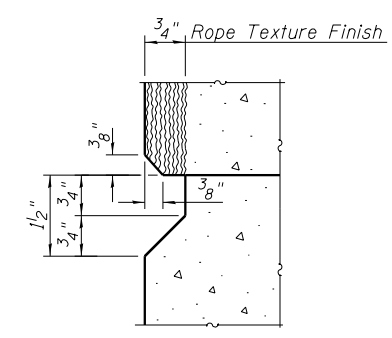
8/24/2012 10:06:58 PM - G:\CHIN\013\Bridges\CADD\060-0216&0217-76A89-09-Deck\_details.dgn



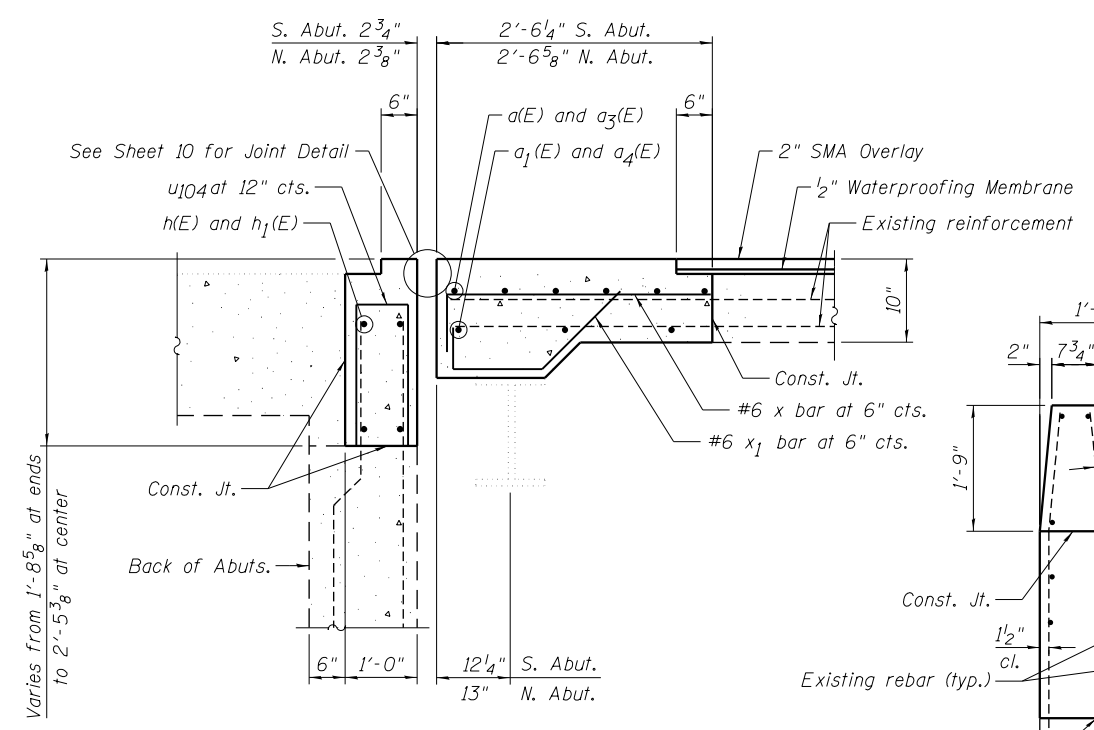
**SECTION D-D  
SECTION THRU PARPET**



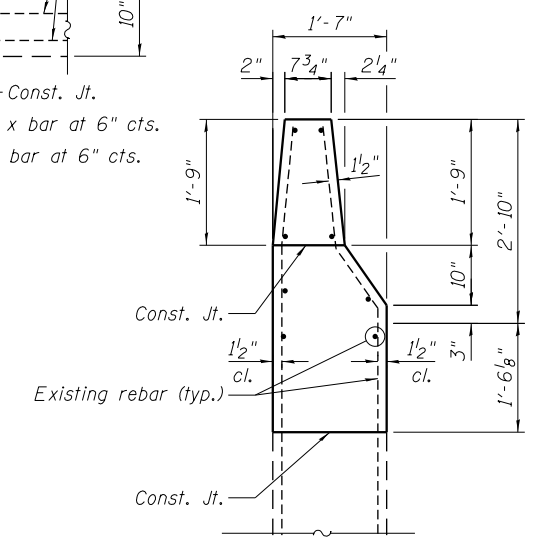
**DETAIL A**



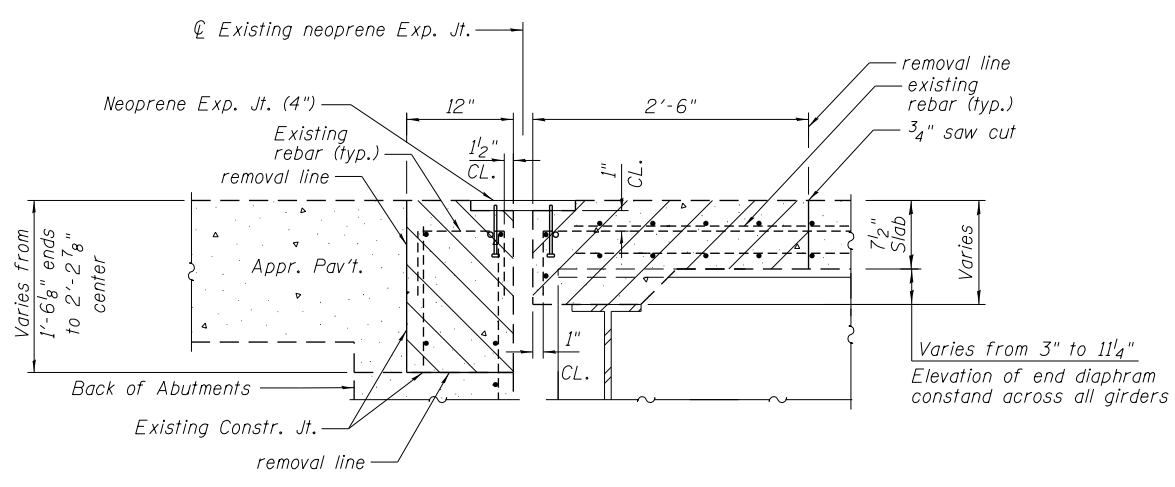
**DETAIL B**



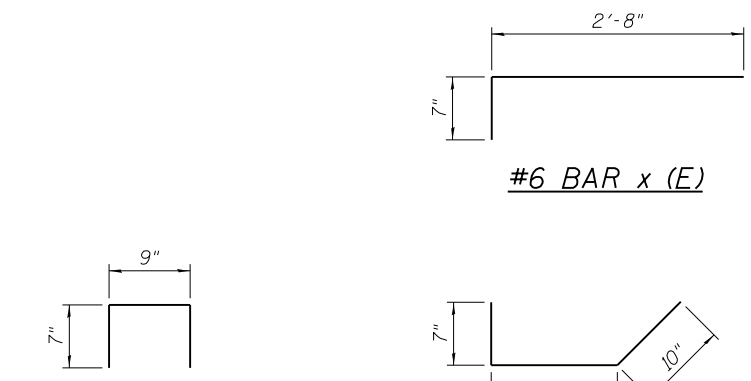
**SECTION B-B**



**SECTION C-C  
SECTION THRU WINGWALL**

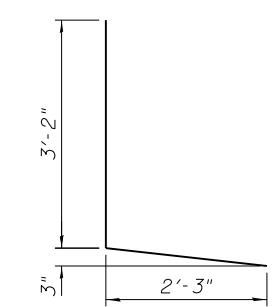


**SECTION A-A**

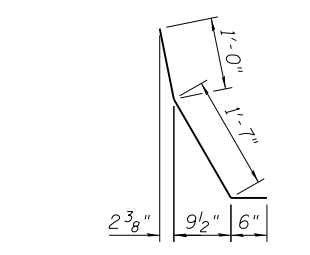


**#5 BAR u104(E)**

**#6 BAR x1(E)**



**#4 BAR d(E)**



**#5 BAR d1(E)**

**BILL OF MATERIAL**

Bar	No.	Size	Length	Shape	
d(E)	48	#5	24'-0"	—	
a1(E)	48	#5	23'-4"	—	
a3(E)	24	#5	30'-6"	—	
a4(E)	24	#5	29'-10"	—	
d1(E)	16	#5	3'-11"	└	
h(E)	32	#5	23'-3"	—	
h1(E)	16	#5	28'-11"	—	
u104(E)	300	#5	1'-11"	□	
x(E)	552	#6	3'-3"	└	
x1(E)	552	#6	2'-7"	└	
Item				Unit	Quantity
Reinforcement Bars, Epoxy Coated				Pound	8560
Bar Splicers				Each	52

FILE NAME = 0600216&0217-76A89-09-Deck\_details.dgn



USER NAME = DMGloias	DESIGNED - WAE	REVISED -
PLOT SCALE = 2/8" = 1' = 1/4"	CHECKED - FAS	REVISED -
PLOT DATE = 8/24/2012	DRAWN - DMG	REVISED -
	CHECKED - SLZ	REVISED -

**STATE OF ILLINOIS  
DEPARTMENT OF TRANSPORTATION**

**DECK JOINT DETAILS N.B. AND S.B.  
STRUCTURE NO. 060-0216 & 060-0217**

SHEET NO. 9 OF 14 SHEETS

F.A.I. R.T.E. = 255	SECTION = 60-(7,8) RS-2	COUNTY = MADISON	TOTAL SHEETS = 261	SHEET NO. = 252
CONTRACT NO. 76A89			ILLINOIS FED. AID PROJECT	