

F.A.P. RTE.	SECTION	COUNTY	TOTAL SHEETS	SHEET NO.
789	125-1HB-1	MADISON	29	1
		ILLINOIS	CONTRACT NO. 76F54	

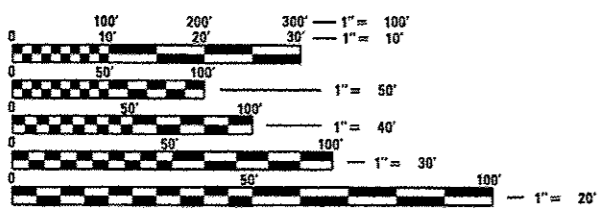
STATE OF ILLINOIS
DEPARTMENT OF TRANSPORTATION
DIVISION OF HIGHWAYS

**PROPOSED
HIGHWAY PLANS**

FAP ROUTE 789 (IL 143)
SECTION 125-1HB-1
BRIDGE REHABILITATION
MADISON COUNTY

C-98-047-12

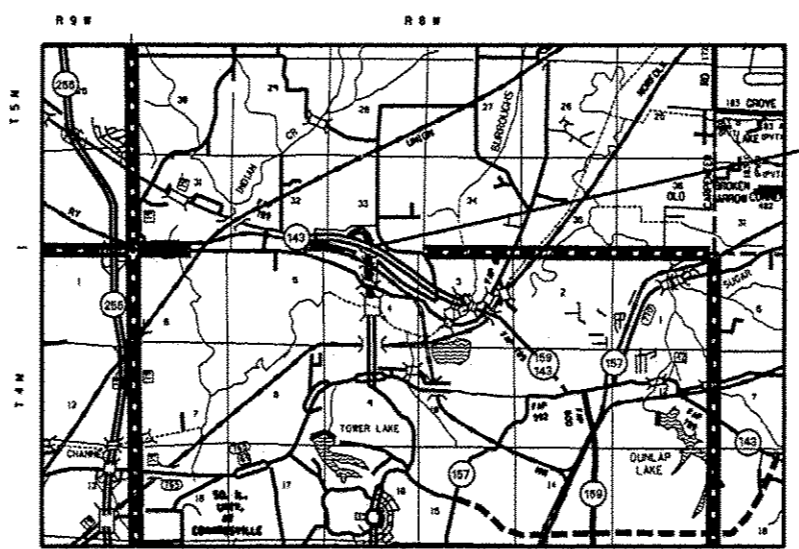
FOR INDEX OF SHEETS, SEE SHEET NO. 2



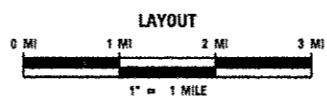
FULL SIZE PLANS HAVE BEEN PREPARED USING STANDARD ENGINEERING SCALES. REDUCED SIZED PLANS WILL NOT CONFORM TO STANDARD SCALES. IN MAKING MEASUREMENTS ON REDUCED PLANS, THE ABOVE SCALES MAY BE USED.

J.U.L.I.E.
JOINT UTILITY LOCATION INFORMATION FOR EXCAVATION
1-800-892-0123
OR 811

DESIGN DESIGNATION
N/A



PROJECT LOCATION
SN 060-0191 & 060-0192
STA. 54 + 60.95
LAT: 38.8333
LONG: -89.9932



PROJECT ENGINEER: PATTI LeBEAU (618)346-3179
PROJECT MANAGER: REBECCA THARP (618)346-3323

CONTRACT NO. 76F54

ADT
2011 = 9150 (ACTUAL)
2012 = 9300 (ESTIMATED)
2032 = 11,300 (ESTIMATED)
SU = 2.2% MU = 1.0%

GROSS LENGTH = 180 FT. = 0.0341 MILE
NET LENGTH = 180 FT. = 0.0341 MILE

STATE OF ILLINOIS
DEPARTMENT OF TRANSPORTATION
DIVISION OF HIGHWAYS

SUBMITTED Nov 2 20 12
Deer Osman
DEPUTY DIRECTOR OF HIGHWAYS, REGION 9 ENGINEER

Dec 7 20 12
John D. Baranelli, PE
acting ENGINEER OF DESIGN AND ENVIRONMENT

Dec 7 20 12
William B. Frey, Jr.
acting DIRECTOR OF HIGHWAYS, CHIEF ENGINEER

**PRINTED BY THE AUTHORITY
OF THE STATE OF ILLINOIS**