

GENERAL NOTES

Reinforcement bars designated (E) shall be epoxy coated.

Prior to pouring the new concrete deck, all heavy or loose rust, loose mill scale, and other loose or potentially detrimental foreign material shall be removed from the surfaces in contact with concrete. Tightly adhered paint may remain unless otherwise noted. Removal shall be accomplished by methods that will not damage the steel and the cost will be included in the pay item covering removal of the existing concrete.

The deck surface shall have its final finish lined according to Article 420.09(e)(1) of the Standard Specifications. Cost included with Concrete Superstructures.

Plan dimensions and details relative to existing plans are subject to nominal construction variations. The Contractor shall field verify existing dimensions and details affecting new construction and make necessary approved adjustments prior to construction or ordering of materials. Such variations shall not be cause for additional compensation for a change in scope of the work, however, the Contractor will be paid for the quantity actually furnished at the unit price bid for the work.

The existing structural steel coating contains lead. The Contractor shall take appropriate precautions to deal with the presence of lead on this project.

All structural steel shall conform to AASHTO Classification M 270 Grade 36, unless otherwise noted.

Joint opening shall be adjusted according to Article 520.04 of the Standard Specs. when the deck is poured at an ambient temperature other than 50° F.

Existing reinforcement bars extending into removal area shall be cleaned, straightened and incorporated into the new construction. Any reinforcement bars that are damaged during concrete removal shall be replaced with an approved bar splicer or anchorage system. Cost included with Concrete Removal.



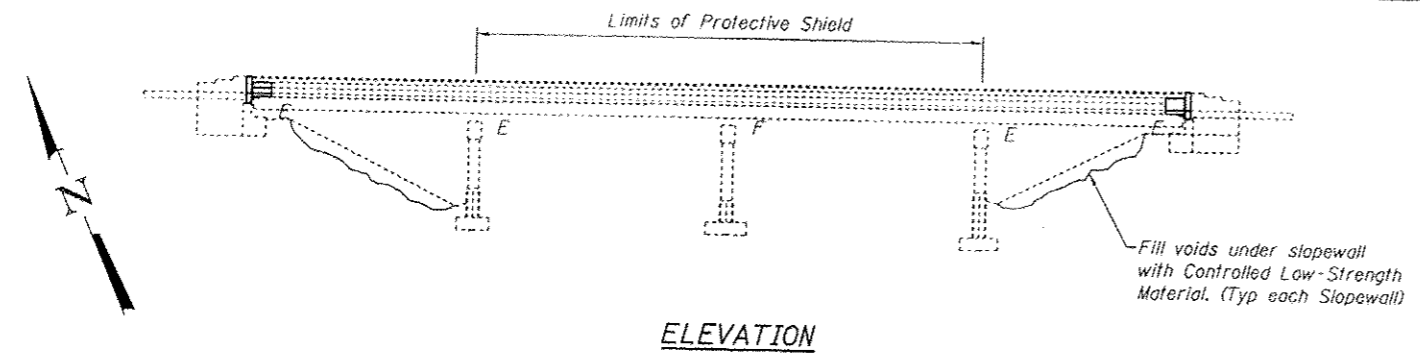
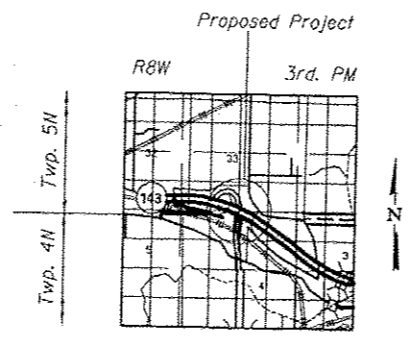
TOTAL BILL OF MATERIAL

ITEM	UNIT	TOTAL
Concrete Removal	Cu. Yd.	62.3
Concrete Superstructure	Cu. Yd.	67.9
Protective Shield	Sq. Yd.	785
Bar Splicers	Each	88
Floor Drain Extension	Each	8
Plug Existing Deck Drains	Each	15
Preformed Joint Strip Seal	Foot	180
Waterproofing Membrane System	Sq. Yd.	1525
HMA Surface Course, Mix "C" N70	Ton	165
Deck Slab Repair (Partial)	Sq. Yd.	435
Deck Slab Repair (Full Depth, Type II)	Sq. Yd.	52
Reinforcement Bars, Epoxy Coated	Pound	4500
Controlled Low-Strength Material	Cu. Yd.	149
Protective Coat	Sq. Yd.	394
Traffic Control and Protection, (Special)	L. Sum	1

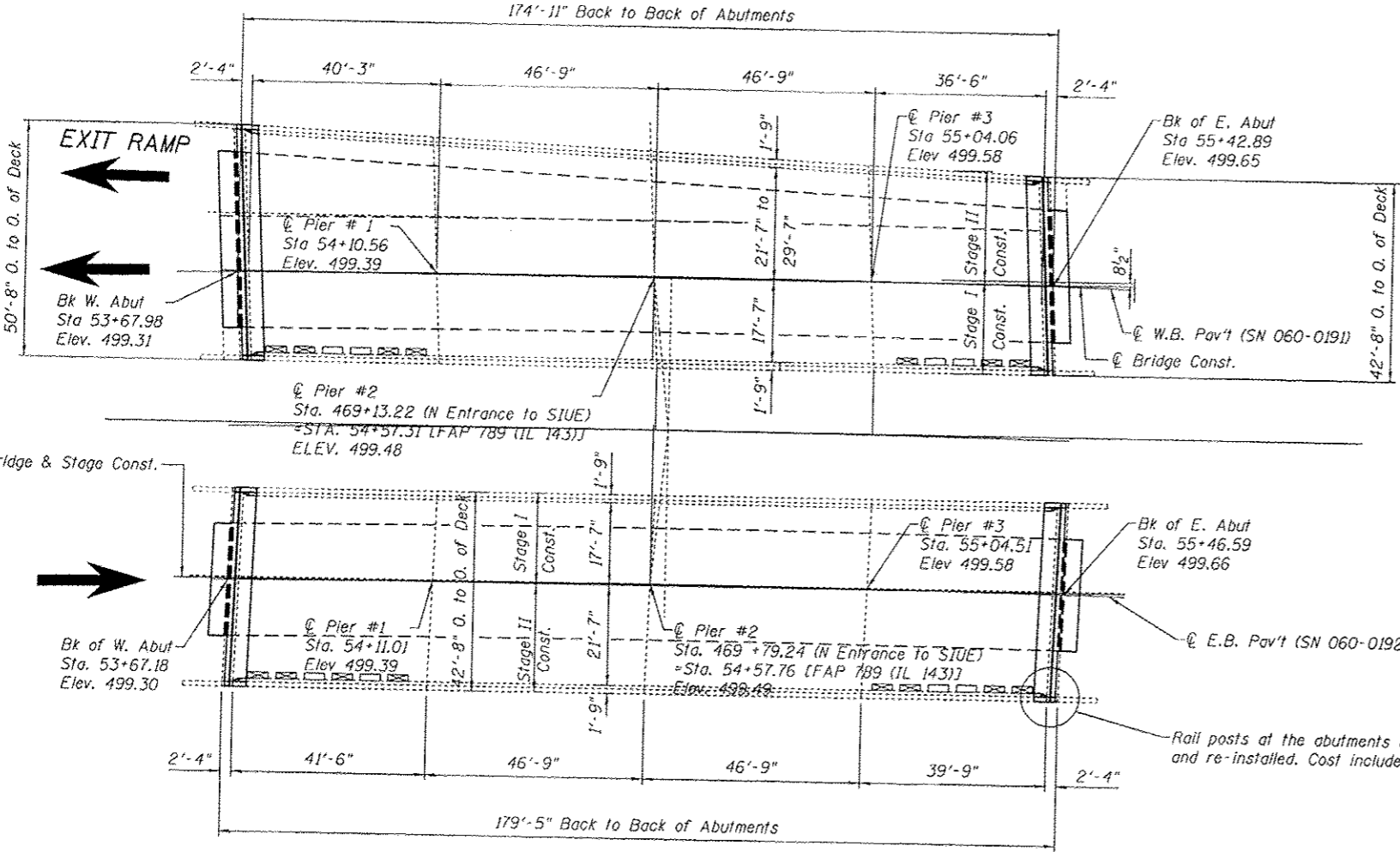
INDEX OF SHEETS

1. General Plan & Elevation
2. Deck Cross Section (W.B.)
3. Deck Cross Section (E.B.)
4. Joint Removal (W.B.)
5. Joint Removal (E.B.)
6. Joint Replacement (W.B.)
7. Joint Replacement (E.B.)
8. Joint Details
9. Deck Patching Survey (Sketch) (W.B.)
10. Deck Patching Survey (Data) (W.B.)
11. Deck Patching Survey (Sketch) (E.B.)
12. Deck Patching Survey (Data) (E.B.)
13. Drain Details & Waterproofing Staging
14. Strip Seat Details
15. Temporary Concrete Barrier
16. Bar Splicers

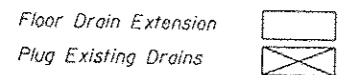
LOCATION SKETCH



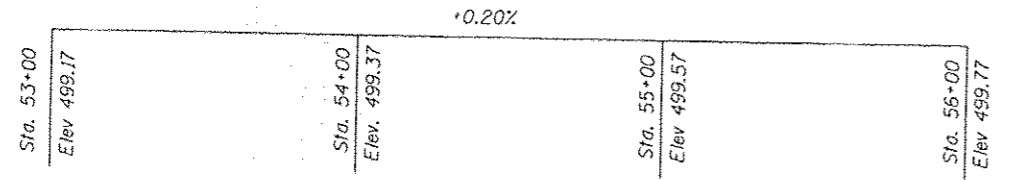
ELEVATION



PLAN



Replace deck ends, hatchblocks, and install strip seals at each end.
 Perform partial and full depth patching
 HMA overlay with WMS
 Floor Drain Extensions & Plug Existing Drains



PROPOSED PROFILE GRADE F.A. RTE 50

DESIGNED - AVV	EXAMINED - <i>Timothy A. Puzey</i>	DATE - 11/20/12
CHECKED - EOE	PASSED - <i>David Carl Puzey</i>	
DRAWN - AVV		
CHECKED - AVV		

**STATE OF ILLINOIS
 DEPARTMENT OF TRANSPORTATION**

**GENERAL PLAN & ELEVATION
 IL 143 over SIU N. Access Road, SN 060-0191 & 0192**

F.A.P. RTE.	SECTION	COUNTY	TOTAL SHEETS	SHEET NO.
789	125-1HB-1	Madison	29	14

SHEET NO. 1 OF 16 SHEETS
 CONTRACT NO. 76F54