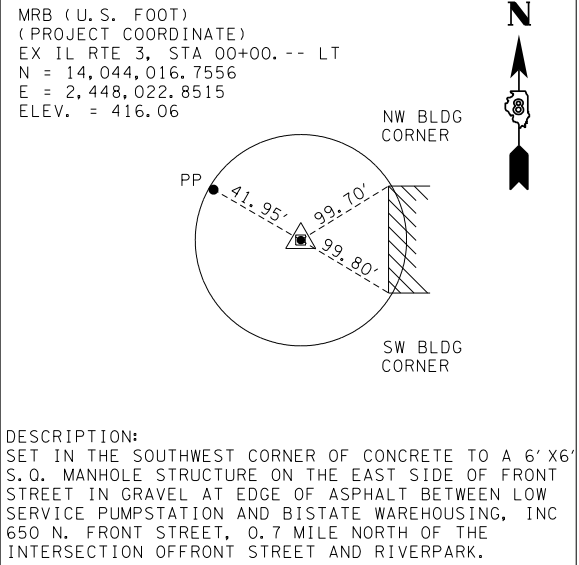
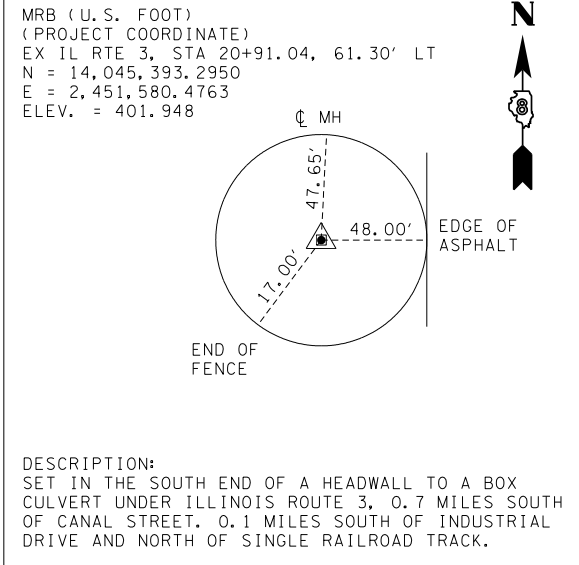


MONUMENT NO. 7



MONUMENT NO. 8



COORDINATE SYSTEM

THE MISSISSIPPI RIVER BRIDGE (MRB) COORDINATE SYSTEM IS BASED ON A MODIFIED UNIVERSAL TRANSVERSE MERCATOR (UTM) SYSTEM. THE MRB PROJECT COORDINATE SYSTEM HAS CONVERTED FROM UTM ZONE 15 NORTH BY AN AVERAGE PROJECTION FACTOR AND ALSO CONVERTED FROM METERS TO U.S. SURVEY FEET.

HORIZONTAL DATUM

THE DATUM USED IS NAD-83
THE MRB PROJECT COORDINATES HAVE BEEN TRANSFORMED FROM UTM BY USING AN AVERAGE PROJECTION FACTOR IN THE PROJECT AREA.

AVERAGE GRID FACTOR = 1.000339495
PROJECTION FACTOR = 1/GRID = 0.999660620

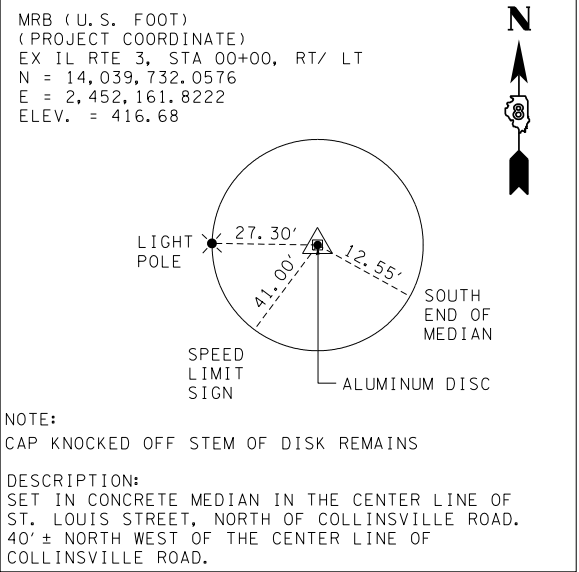
THE BASE POINT THAT ALL UTM COORDINATES WERE SCALED FROM WAS THE CENTRALLY LOCATED MONUMENT NO. 10. EACH VECTOR FROM MONUMENT NO. 10 TO ALL OTHER MONUMENTS WAS MULTIPLIED BY THE PROJECTION FACTOR TO CALCULATE A SURFACE VECTOR AND THEN THIS SURFACE VECTOR WAS USED TO CALCULATE THE SURFACE COORDINATE (MRB). (NOTE: 1 METER EQUALS 3.28083333 U.S. SURVEY FOOT).

UTM ZONE 15 NORTH (METERS) = PROJECTED GRID COORDINATES
MRB (FEET) = PROJECT SURFACE COORDINATES

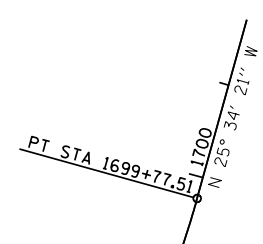
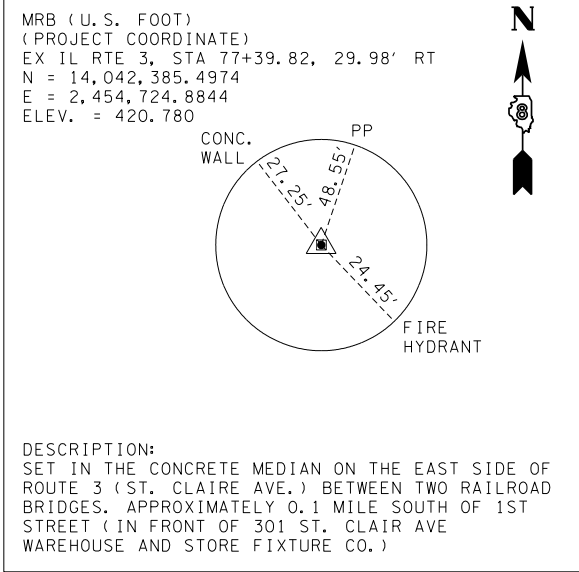
VERTICAL DATUM

THE DATUM USED IS NAVD 1988

MONUMENT NO. 9



MONUMENT NO. 10



PR CURVE RTE3-10
PI STA = 1694+63.93
Δ = 74° 28' 55" (LT)
D = 6° 01' 19"
R = 951.44'
T = 723.26'
L = 1,236.83'
E = 243.69'
e = BY OTHERS
T.R. = BY OTHERS
S.E. RUN = BY OTHERS
P.C. STA = 1687+40.68
P.T. STA = 1699+77.51

ALIGNMENT COORDINATES - RELOCATED IL RTE 3			
STATION	NORTHING	EASTING	
PC	613+00.92	14039337.3396	2449941.8130
PI	620+50.65	14039971.6573	2450341.4813
PT	627+40.27	14040715.1960	2450245.3362
PC	637+54.80	14041721.3548	2450115.2322
PI	642+04.05	14042166.8927	2450057.6208
PT	645+79.87	14042462.1608	2450396.2058
POT	1651+79.35	14042690.1546	2450657.6471
PC	1687+40.68	14045030.8377	2453341.7169
PI	1694+63.93	14045506.1999	2453886.8164
PT	1699+77.51	14046158.6071	2453574.6187

ALIGNMENT COORDINATES - RIVER PARK DRIVE CONNECTOR			
STATION	NORTHING	EASTING	
POT	7+41.77	14039703.2264	2449725.1400
PC	9+61.03	14039912.1259	2449791.7411
PI	11+76.99	14040117.8849	2449857.3409
PT	13+35.86	14040122.0301	2450073.2643
POT	15+00.00	14040125.1806	2450237.3755

ALIGNMENT COORDINATES - PR MISSOURI AVE			
STATION	NORTHING	EASTING	
POT	3+17.75	14040909.0744	2448002.0571
PC	6+94.56	14041282.9978	2448048.6307
PI	11+92.09	14041776.7073	2448110.1241
PT	14+77.48	14041717.6652	2448604.1328
PC	20+80.60	14041646.0911	2449202.9964
PI	23+29.42	14041616.5634	2449450.0563
PT	25+75.70	14041648.4718	2449696.8200
POT	30+00.00	14041702.8845	2450117.6205

ALIGNMENT COORDINATES - EX IL RTE 3			
STATION	NORTHING	EASTING	
PC	83+34.12	14042787.9481	2454286.5585
PI	83+86.24	14042825.0872	2454249.9910
PRC	84+37.98	14042853.8847	2454206.5526
PI	84+88.85	14042881.9915	2454164.1558
PT	85+39.37	14042918.0631	2454128.2863

MATCH LINE STA 1674+00

EX IL RTE 3
STA 1678+06.67=
EX IL RTE 3 STA 106+53.21

PR RELOCATED IL RTE 3
ALIGNMENT FOR INFORMATION

MATCH LINE STA 103+00



USER NAME = *USER*	DESIGNED - JJO	REVISED -
PLOT SCALE = *SCALE*	DRAWN - JJO	REVISED -
PLOT DATE = *DATE*	CHECKED - PJM	REVISED -
	DATE - 06/26/12	REVISED -

STATE OF ILLINOIS
DEPARTMENT OF TRANSPORTATION

ALIGNMENTS, TIES, AND BENCHMARKS

SCALE: SHEET NO. OF SHEETS STA. TO STA.

F.A.P. RTE.	SECTION	COUNTY	TOTAL SHEETS	SHEET NO.
788	520-1-2B	ST. CLAIR	94	11
CONTRACT NO. 76F69				
ILLINOIS FED. AID PROJECT				