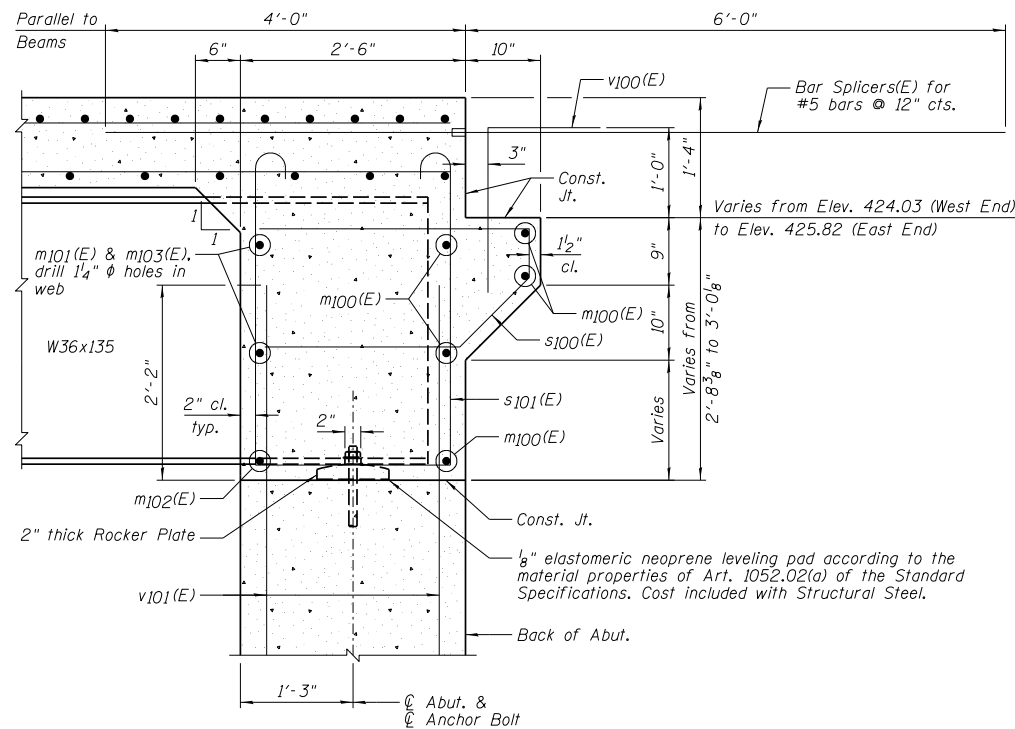


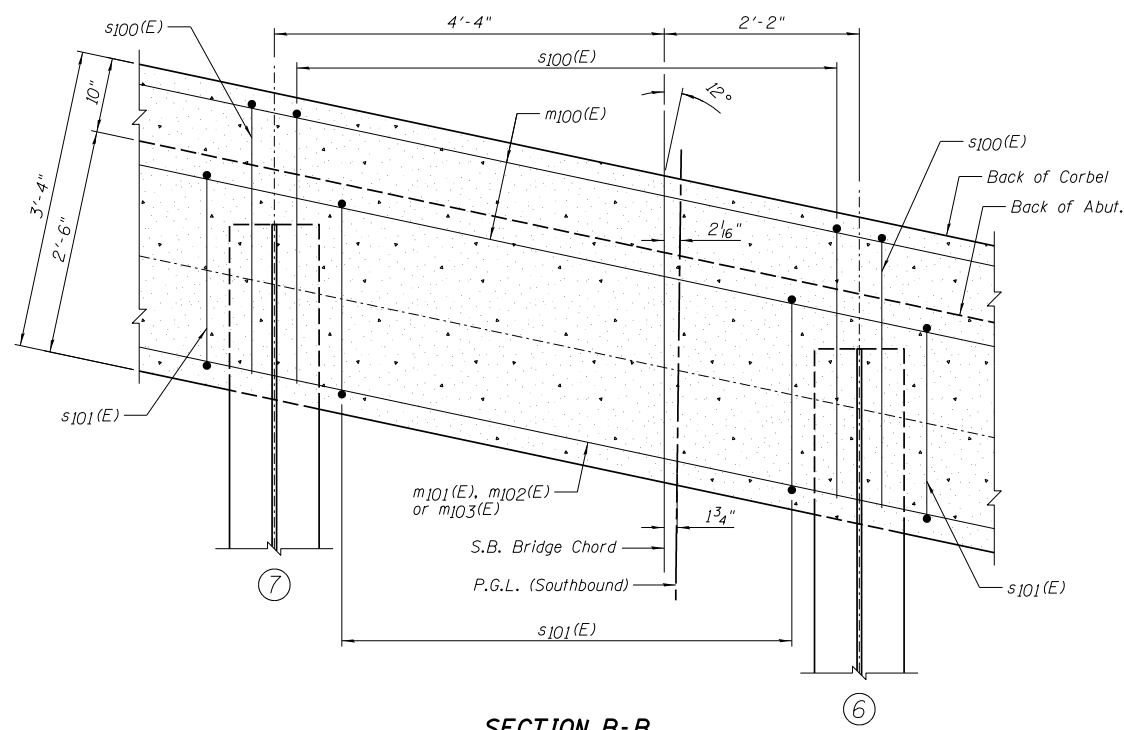
ELEVATION OF DIAPHRAGM AT SOUTH ABUTMENT
(Looking South)

| |
|------------|
| BAR LAP |
| #6 - 3'-4" |



SECTION A-A

Dimensions @ Rt. L's except as noted.



SECTION B-B

NOTES:

- 1.) See Sheet A9 for Superstructure Details and Bill of Material.
- 2.) See Sheet A27 for Fixed Bearing Details.
- 3.) F.F. denotes Front Face, B.F. denotes Back Face and E.E. denotes Each End.
- 4.) See Sheet A38 for Bar Splicer Details.
- 5.) Bars indicated thus 2x5-#6 indicates 2 lines of bars with 5 lengths per line.
- 6.) The s100(E) and s101(E) bars shall be placed parallel to the beams. Spacing for these bars shall be at right angles to the beams.

| | |
|--------------------|---------|
| DESIGNED - TCR/JCZ | REVISED |
| CHECKED - JML | REVISED |
| DRAWN - DJM/JWK | REVISED |
| CHECKED - MSW | REVISED |
| DATE - 06/26/12 | |

| | | | | |
|--------------------|----------|-----------|---------------------------|-----------|
| F.A.P. RTE. | SECTION | COUNTY | TOTAL SHEETS | SHEET NO. |
| 788 | 520-1-2B | ST. CLAIR | 94 | 47 |
| CONTRACT NO. 76F69 | | | ILLINOIS FED. AID PROJECT | |