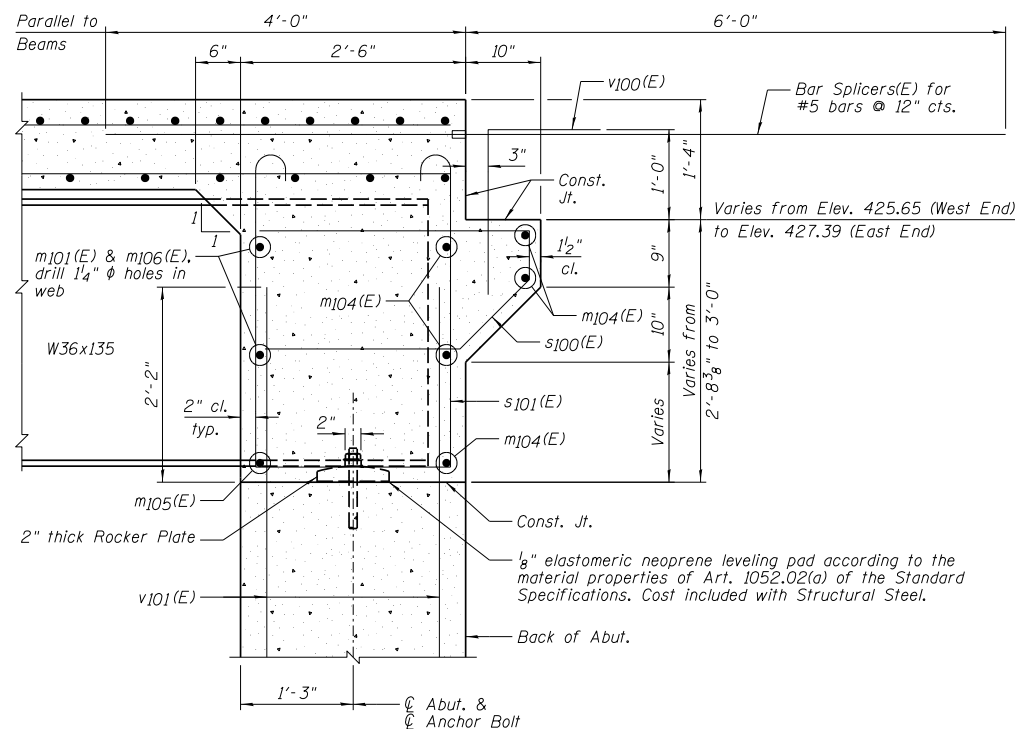


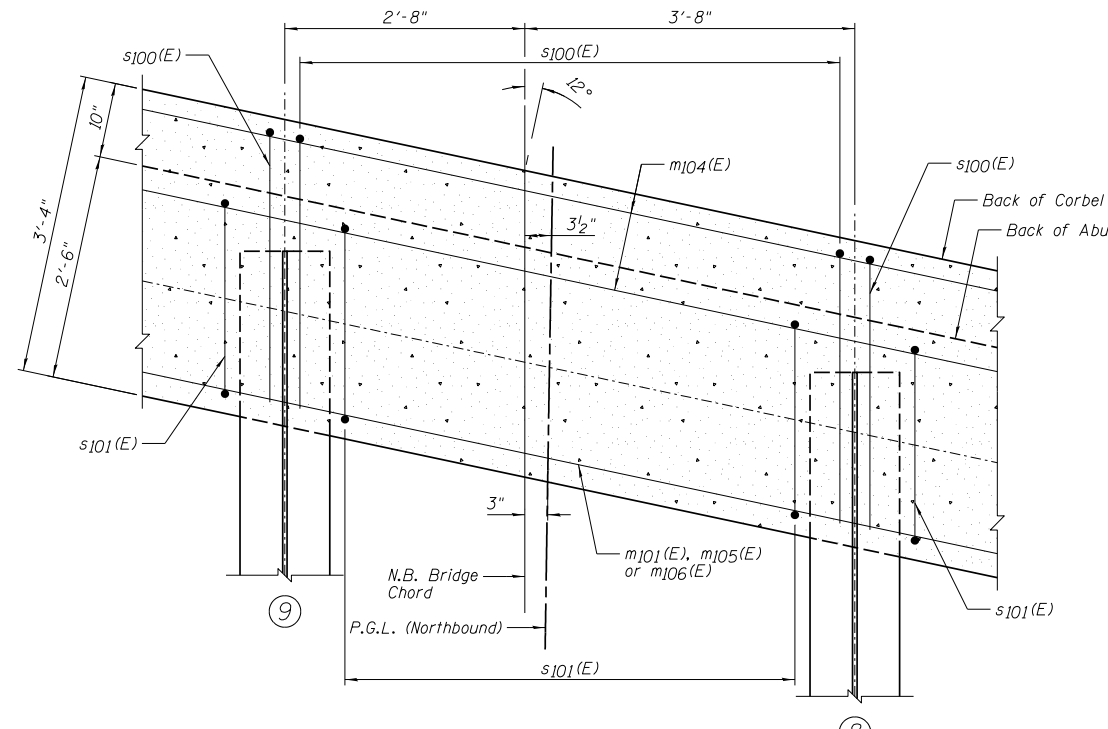
ELEVATION OF DIAPHRAGM AT SOUTH ABUTMENT
(Looking South)

BAR LAP
#6 - 3'-4"



SECTION A-A

Dimensions @ Rt. L's except as noted.



SECTION B-B

NOTES:

- 1.) See Sheet A10 for Superstructure Details and Bill of Material.
- 2.) See Sheet A27 for Fixed Bearing Details.
- 3.) F.F. denotes Front Face, B.F. denotes Back Face and E.E. denotes Each End.
- 4.) See Sheet A38 for Bar Splicer Details.
- 5.) Bars indicated thus 2x5-#6 indicates 2 lines of bars with 5 lengths per line.
- 6.) The s100(E) and s101(E) bars shall be placed parallel to the beams. Spacing for these bars shall be at right angles to the beams.



DESIGNED - TCR/JCZ	REVISED
CHECKED - JML	REVISED
DRAWN - DJM/JWK	REVISED
CHECKED - MSW	REVISED
DATE - 06/26/12	

STATE OF ILLINOIS
DEPARTMENT OF TRANSPORTATION

SOUTH DIAPHRAGM DETAILS, NORTHBOUND ROADWAY
STRUCTURE NO. 082-0385 NB & 082-0386 SB

SHEET NO. A18 OF 48 SHEETS

F.A.P. RTE.	SECTION	COUNTY	TOTAL SHEETS	SHEET NO.
788	520-1-2B	ST. CLAIR	94	49
CONTRACT NO. 76F69			ILLINOIS FED. AID PROJECT	