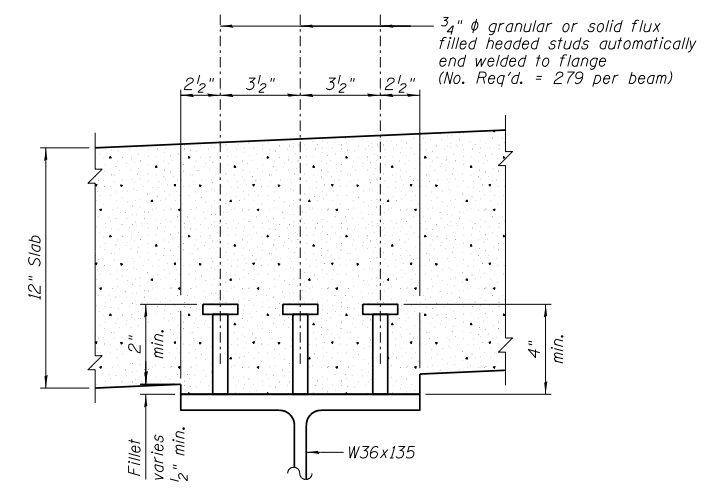


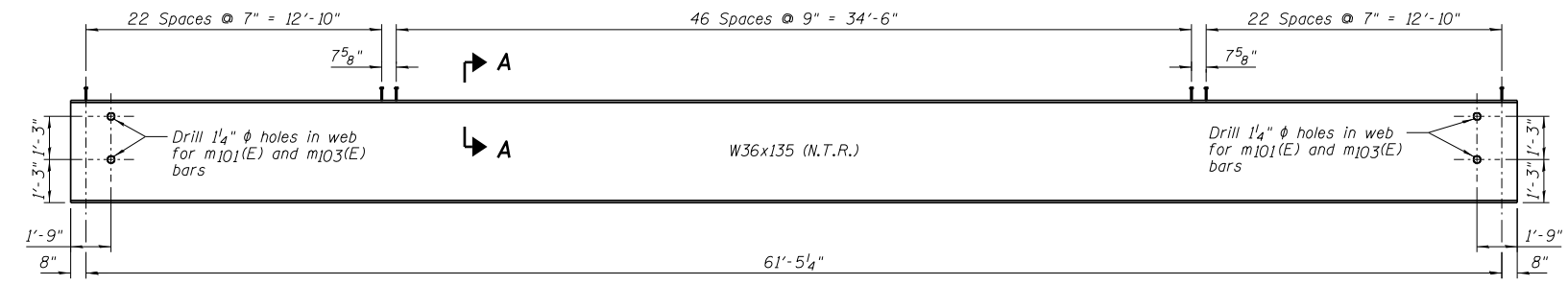
**PLAN**



**SECTION A-A**

FABRICATED TOP OF BEAM ELEVATION TABLE							
Location	Beam No. 8	Beam No. 9	Beam No. 10	Beam No. 11	Beam No. 12	Beam No. 13	Beam No. 14
☐ Brg. S. Abut.	425.88	426.17	426.47	426.77	427.07	427.37	427.66
☐ Brg. N. Abut.	424.63	424.93	425.23	425.53	425.83	426.13	426.43

For fabrication use only.



**ELEVATION**

**NOTES:**

- 1.) See Sheet A26 for Diaphragm Details.
- 2.) Load carrying components designated N.T.R. shall conform to the Impact Testing Requirements, Zone 2.
- 3.) All diaphragms shall be installed as steel is erected and secured with erection pins and bolts except as otherwise noted. Individual diaphragms at supports may be temporarily disconnected to install bearing anchor rods.



DESIGNED - TCR/JCZ	REVISED
CHECKED - JML	REVISED
DRAWN - DJM/JWK	REVISED
CHECKED - MSW	REVISED
DATE - 06/26/12	

**STATE OF ILLINOIS  
DEPARTMENT OF TRANSPORTATION**

**STRUCTURAL STEEL, NORTHBOUND ROADWAY  
STRUCTURE NO. 082-0385 NB & 082-0386 SB**

SHEET NO. A25 OF 48 SHEETS

F.A.P. RTE.	SECTION	COUNTY	TOTAL SHEETS	SHEET NO.
788	520-1-2B	ST. CLAIR	94	56
CONTRACT NO. 76F69			ILLINOIS FED. AID PROJECT	