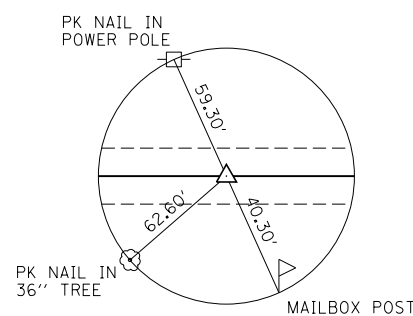
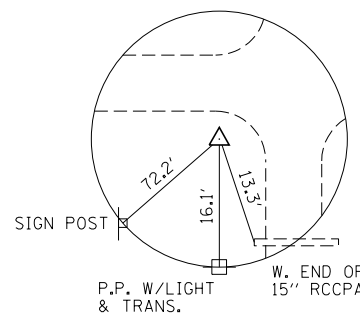


IL 37 CENTERLINE			
DESCRIPTION	STATION	NORTHING	EASTING
POT	370+00.00	559,628.2647	820,470.9728
PI	374+44.50	559,183.8287	820,463.4260
PI	384+35.70	558192.8499	820442.4884
POT	408+49.41	555779.5922	820395.7141

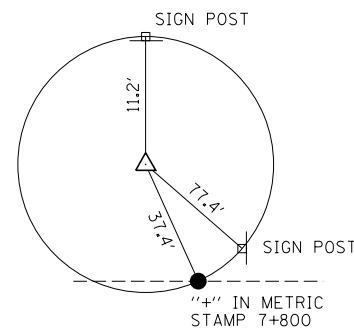
CONTROL POINTS					
POINT NUMBER	STATION	OFFSET	NORTHING	EASTING	ELEVATION
POT	379+99.984		558628.469	820451.670	418.402
CP#410922/CP#2	383+50.071	RT. 16.121	558278.801	820428.184	418.402
PERM. SUREY MARKER	384+19.647	RT. 40.361	558209.752	820402.476	416.549
CP#3	385+33.462	LT. 16.82	558094.780	820457.415	417.630
CP#4	387+87.001	LT. 17.54	557841.275	820453.220	417.425
CP#7	407+82.664	LT. 17.39	555845.990	820414.395	414.210
CP#8	379+74.445	RT. 22.85	558654.485	820429.385	418.070
CP#10	390+83.548	LT. 29.10	557544.560	820459.030	416.925
CP#11	391+54.732	RT. 256.31	557478.920	820172.291	415.496
CP#12	389+32.128	RT. 365.59	557703.600	820067.348	414.942
CP#13	391+07.705	RT. 505.62	557530.769	819923.946	415.374
POT	394+99.985		557128.766	820421.827	416.461



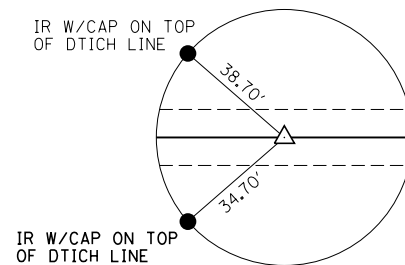
P.O.T. 0.02' RT. STA. 379+99.98
 PK NAIL (SET)
 N. 558628.469
 E. 820451.670



IDOT CP#410922
 IRON PIN W/CAP
 N. 558278.801
 E. 820428.184



IDOT CP#410921
 IRON PIN W/CAP
 N. 557544.564
 E. 820459.028



P.O.T. 0.04' RT. STA. 394+99.98
 PK NAIL (SET)
 N. 557128.766
 E. 820421.827

BENCHMARKS
 BM#H-216 - TOP OF WINGWALL
 21' LT., STA. 385+45
 ELEV. 418.34