

F.A.S. RTE.	SECTION	COUNTY	TOTAL SHEETS	SHEET NO.
825	**	JEFFERSON	6	1
		ILLINOIS	CONTRACT NO. 78307	

**09 CM BRIDGE REPAIR 2013-1

STATE OF ILLINOIS
DEPARTMENT OF TRANSPORTATION
DIVISION OF HIGHWAYS

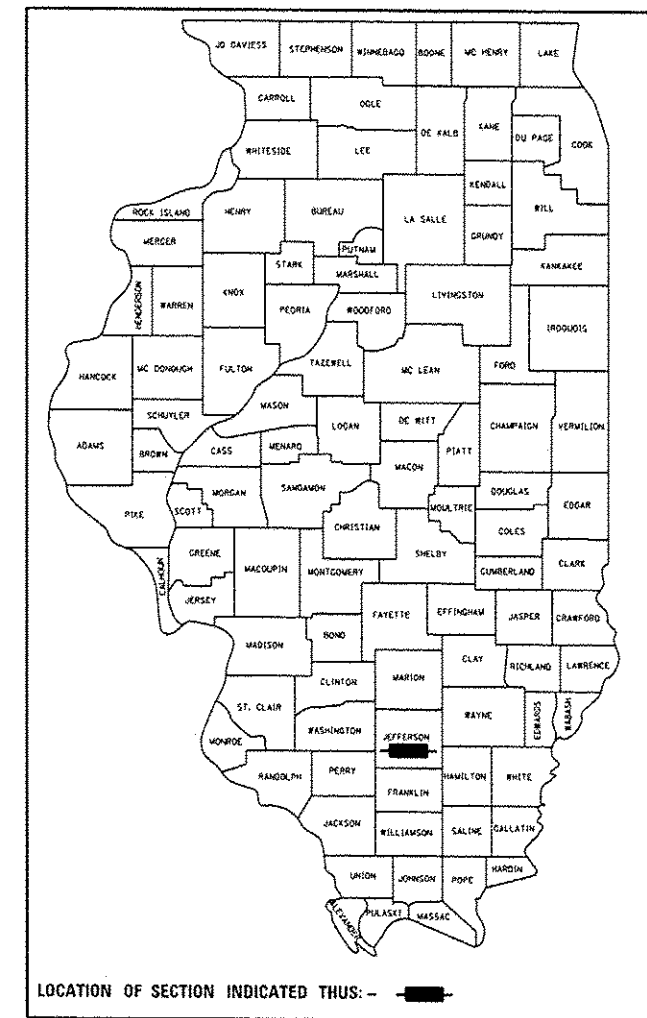
**PROPOSED
HIGHWAY PLANS**

F.A.S. 825 (CH 13)
OVER F.A.I. 57 (I-57)
D9 CM BRIDGE REPAIR 2013-1

JEFFERSON COUNTY

C-99-035-12

D-99-031-12



FOR INDEX OF SHEETS, SEE SHEET NO. 2

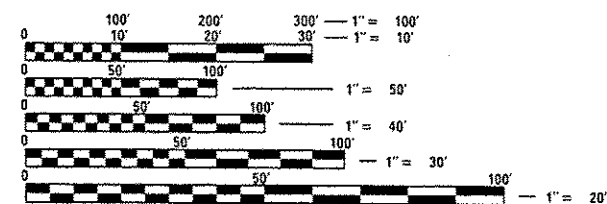
TRAFFIC DATA

FAS 825 TRAFFIC DATA

2011 ADT = 450
3 % TRUCKS

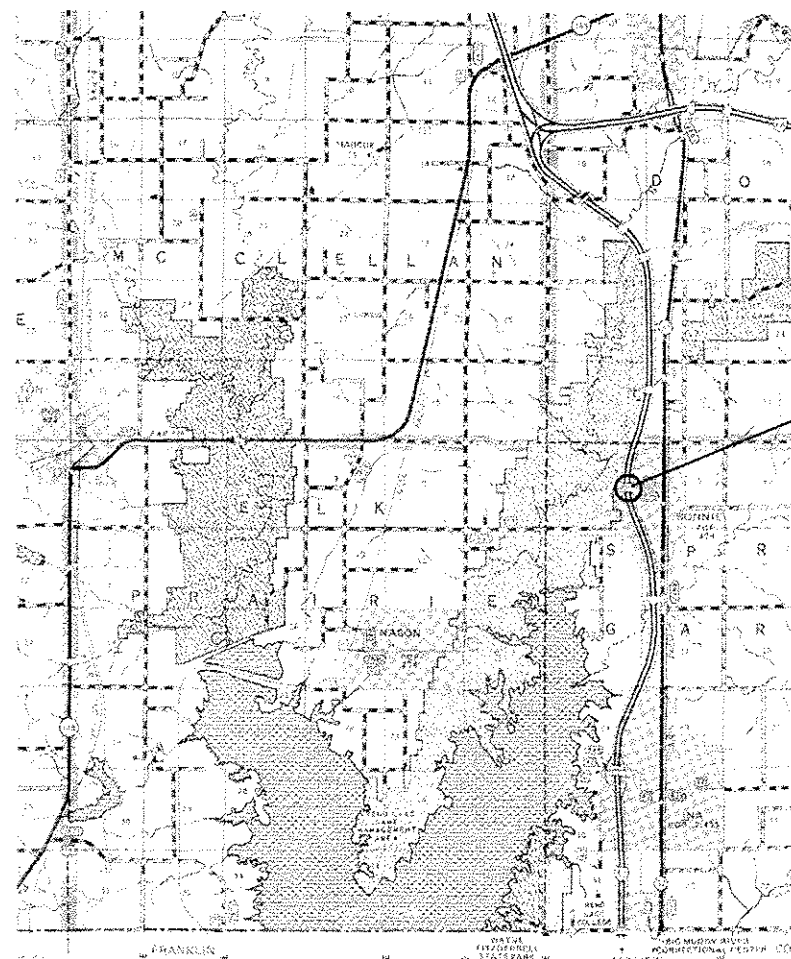
TOWNSHIP:

SPRING GARDEN



FULL SIZE PLANS HAVE BEEN PREPARED USING STANDARD ENGINEERING SCALES. REDUCED SIZED PLANS WILL NOT CONFORM TO STANDARD SCALES. IN MAKING MEASUREMENTS ON REDUCED PLANS, THE ABOVE SCALES MAY BE USED.

J.U.L.I.E.
JOINT UTILITY LOCATION INFORMATION FOR EXCAVATION
1-800-892-0123
OR 811



PROJECT LOCATION
SN 041-0054

GROSS LENGTH = 303 FT. = 0.057 MILE
NET LENGTH = 303 FT. = 0.057 MILE

PROJECT DESIGNER: RUSS WALKER
PROJECT MANAGER: DAVID PICHE (618) 351-5227

CONTRACT NO. 78307

STATE OF ILLINOIS
DEPARTMENT OF TRANSPORTATION
DIVISION OF HIGHWAYS

SUBMITTED Sept 26 20 12

Anna Cameron
DEPUTY DIRECTOR OF HIGHWAYS, REGION ENGINEER

Dec 7 20 12
John D. Baranzelli PE/a
acting ENGINEER OF DESIGN AND ENVIRONMENT

Dec 7 20 12
William R. Frey I&C
acting DIRECTOR OF HIGHWAYS, CHIEF ENGINEER

PRINTED BY THE AUTHORITY
OF THE STATE OF ILLINOIS