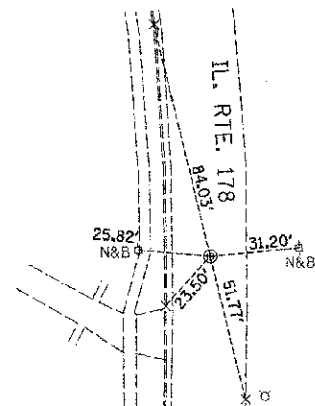
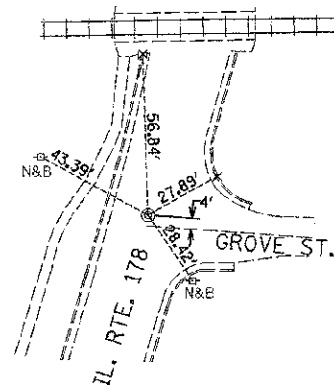


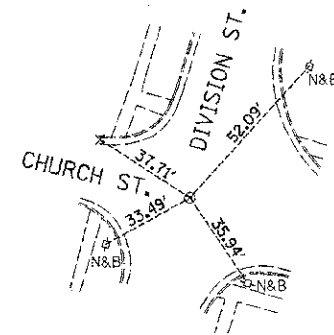
CONTROL POINT #1



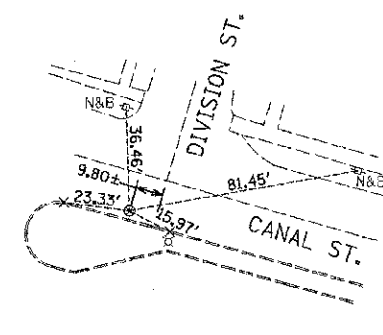
CONTROL POINT #2



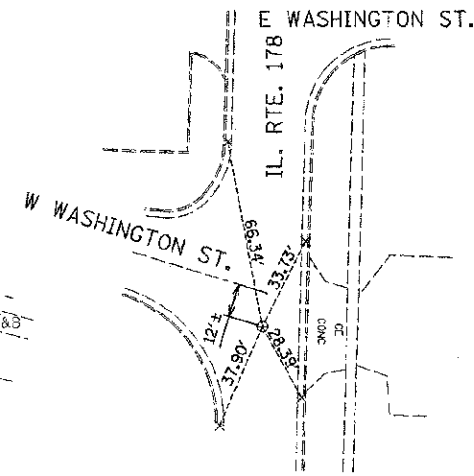
CONTROL POINT #3



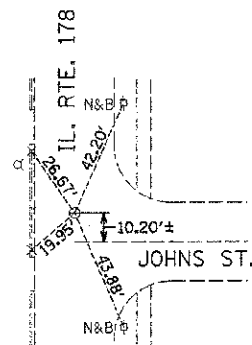
CONTROL POINT #4



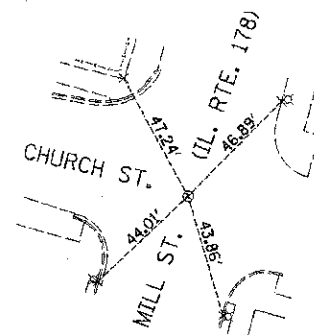
CONTROL POINT #5



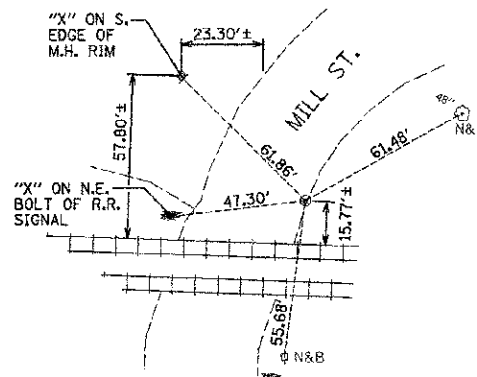
CONTROL POINT #8



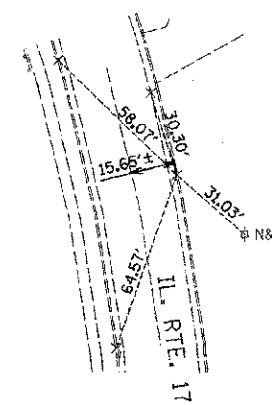
CONTROL POINT #9



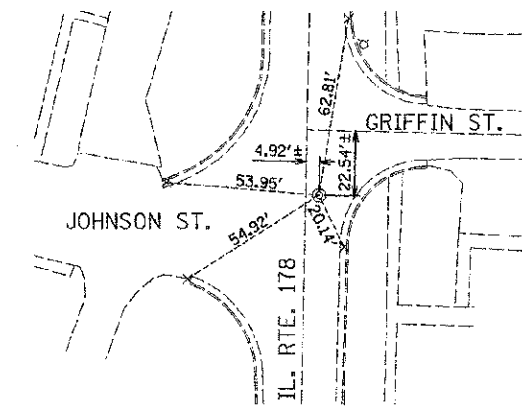
CONTROL POINT #14



CONTROL POINT #15



CONTROL POINT #17



CONTROL POINT #900

LEGEND

- ⊙ CONCRETE NAIL
- ⊗ MAC NAIL
- ⊕ BRASS PLUG
- × CHISELED "X"
- N&B NAIL & BOTTLE CAP

NOTE:
INFORMATION ON THIS SHEET FROM CONTRACT 66547

FILE NAME =
D36647-SHT-4TB.GCN

USER NAME = ---
PLOT SCALE = 1"=50'
PLOT DATE = 09/10

DESIGNED - JKC
DRAWN - NOE
CHECKED - JKC
DATE - 08/10

REVISED - ---
REVISED - ---
REVISED - ---
REVISED - ---

**STATE OF ILLINOIS
DEPARTMENT OF TRANSPORTATION**

**IL RTE 178 (RELOCATED)
ALIGNMENT & TIES**

SCALE: 1"=50' SHEET NO. ___ OF ___ SHEETS STA. 160+00 TO STA. 176+00

F.A.S. RTE.	SECTION	COUNTY	TOTAL SHEETS	SHEET NO.
1278	06-00017-00-LS	LASALLE	29	9
FED. ROAD DIST. NO. - [ILLINOIS] FED. AID PROJECT			CONTRACT NO. 87355	