

1-18-13 LETTING ITEM 095

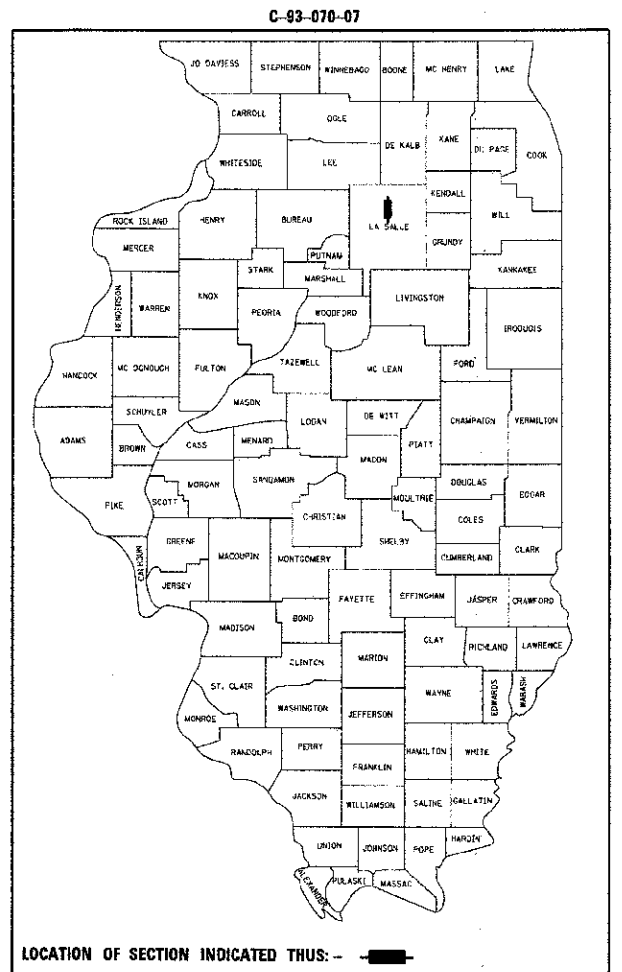
STATE OF ILLINOIS
 DEPARTMENT OF TRANSPORTATION
 DIVISION OF HIGHWAYS
**PROPOSED
 HIGHWAY PLANS**

F.A.S. RTE.	SECTION	COUNTY	TOTAL SHEETS	SHEET NO.
1279	06-00017-01-LS	LASALLE	29	1
FED. ROAD DIST. NO.	ILLINOIS	CONTRACT NO. 87355		

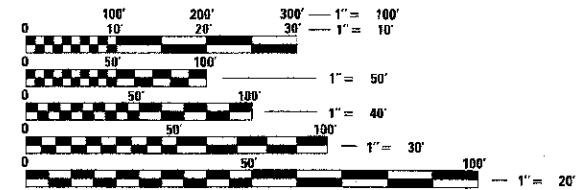
FOR INDEX OF SHEETS, SEE SHEET NO. 2

ILLINOIS TRANSPORTATION ENHANCEMENT PROGRAM
 FAS 1279 (IL ROUTE 178)
 SECTION 06-00017-01-LS
 PROJECT NO. TE-00D3(55)
 VILLAGE OF UTICA
 C-93-070-07

PROPOSED FAS 1279 (IL 178) LANDSCAPING
 FROM SOUTH OF LINCOLN STREET
 TO NORTH OF JOHNSON STREET

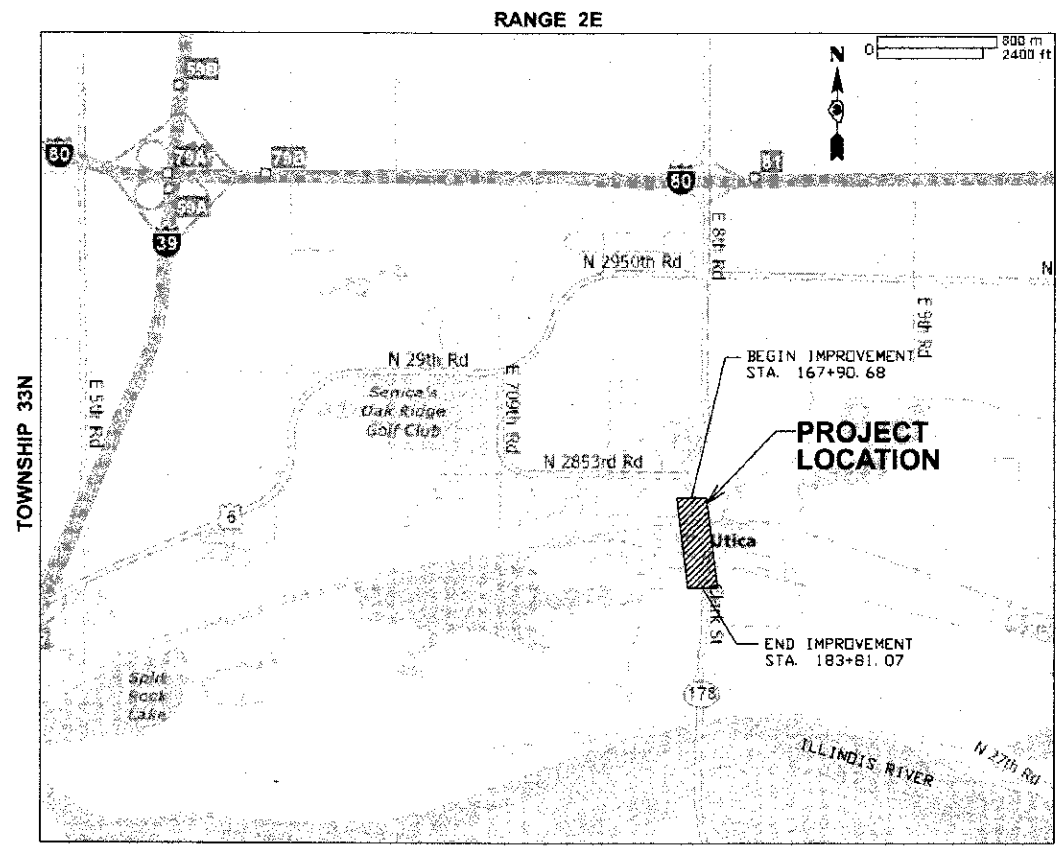


FAS 1279 (IL 178)
 FUNCTIONAL CLASSIFICATION: URBAN MAJOR COLLECTOR
 ADT = 4700(2009)
 PC = 89.3%
 MU = 4.8%
 SU = 5.9%



FULL SIZE PLANS HAVE BEEN PREPARED USING STANDARD ENGINEERING SCALES. REDUCED SIZED PLANS WILL NOT CONFORM TO STANDARD SCALES. IN MAKING MEASUREMENTS ON REDUCED PLANS, THE ABOVE SCALES MAY BE USED.

J.U.L.I.E.
 JOINT UTILITY LOCATION INFORMATION FOR EXCAVATION
 1-800-892-0123
 OR 811



LOCATION MAP

GROSS LENGTH OF IMPROVEMENT = 1,590.39' (0.301 MILES)
 NET LENGTH OF IMPROVEMENT = 1,590.39' (0.301 MILES)



ROBERT J. STERN
 EXPIRES: 11/20/12
 DATE: 10/18/12
 SHEETS: 1-6, 10, 22

exp U.S. Services Inc.
 200 N. Michigan Ave.
 Suite 300
 Chicago, IL 60601
 U.S.A.
 www.exp.com



• BUILDINGS • EARTH & ENVIRONMENT • ENERGY •
 • INDUSTRIAL • INFRASTRUCTURE • SUSTAINABILITY •

STATE OF ILLINOIS
 DEPARTMENT OF TRANSPORTATION
 DIVISION OF HIGHWAYS

APPROVED: 10-18-2012
[Signature]
 LOCAL AGENCY OFFICIAL

PASSED: 10-29-2012
James R. Thraedel III
 DISTRICT 3 IMPLEMENTATION ENGINEER

10-29-2012
Paul A. Lopez
 DEPUTY DIRECTOR OF HIGHWAYS
 REGION TWO ENGINEER

RELEASED FOR BID BASED ON LIMITED REVIEW

CONTRACT NO. 87355

**PRINTED BY THE AUTHORITY
 OF THE STATE OF ILLINOIS**

SUMMARY OF QUANTITIES

80% FEDERAL
20% VILLAGE
TE L22

CODE NO.	ITEM	UNIT	TOTAL QUANTITY	80% FEDERAL 20% VILLAGE TE L22	
				0031	ITEP
20101700	SUPPLEMENTAL WATERING	UNIT	5	5	
20200100	EARTH EXCAVATION	CU YD	201	201	
25000400	NITROGEN FERTILIZER NUTRIENT	POUND	5	5	
25000500	PHOSPHORUS FERTILIZER NUTRIENT	POUND	5	5	
25000600	POTASSIUM FERTILIZER NUTRIENT	POUND	5	5	
25200110	SCODDING, SALT TOLERANT	SQ YD	413	413	
28000400	PERIMETER EROSION BARRIER	FOOT	179	179	
28000510	INLET FILTERS	EACH	2	2	
67100100	MOBILIZATION	L SUM	1	1	
70102620	TRAFFIC CONTROL AND PROTECTION, STANDARD 701501	L SUM	1	1	
* 72000100	SIGN PANEL - TYPE 1	SQ FT	5	5	
* 72400500	RELOCATE SIGN PANEL ASSEMBLY - TYPE A	EACH	6	6	
* 72800100	TELESCOPING STEEL SIGN SUPPORT	FOOT	28	28	
* 78200300	PRISMATIC CURB REFLECTOR	EACH	6	6	

* DENOTES SPECIALTY ITEMS Δ SEE SPECIAL PROVISIONS

N:\3047256-80\CS\41.DGN, N:\3047256-1\EG\41.DGN, A:\983795\801.DGN, 19-17-2012, 10:56:00
 B:\D\41.D N:\E-9844\X\41.D TRANS. 07-2282-28477-981\CIVIL\41.D\97595\SHEET\A.D\87355-SHT-301.DGN

FILE NAME USER NAME = #UGTR# DESIGNED - JM DRAWN - MDN CHECKED - JR DATE - 10/19/12	REVISED - REVISED - REVISED - REVISED -	STATE OF ILLINOIS DEPARTMENT OF TRANSPORTATION	SUMMARY OF QUANTITIES 1 SCALE: SHEET NO. 1 OF 4 SHEETS STA. TO STA.	F.A.S. RTE. 1279 SECTION 06-00017-01-LS COUNTY LA SALLE TOTAL SHEETS 29 SHEET NO. 3 CONTRACT NO. 87355
--	--	---	--	---

SUMMARY OF QUANTITIES

80% FEDERAL
20% VILLAGE
TE L22

CODE NO.	ITEM	UNIT	TOTAL QUANTITY	80% FEDERAL 20% VILLAGE TE L22	
				0031	ITEP
A2004820	TREE, GLEDITSIA TRIACANTHOS INERMIS SKYLINE (SKYLINE THORNLESS COMMON HONEYLOCUST), 2-1/2" CALIPER, BALLED AND BURLAPPED	EACH	11	11	
A2005020	TREE, GYMNOCLADUS DIOICUS (KENTUCKY COFFEETREE), 2-1/2" CALIPER, BALLED AND BURLAPPED	EACH	4	4	
A2005420	TREE, LIRIODENDRON TULIPIFERA (TULIP TREE), 2-1/2" CALIPER, BALLED AND BURLAPPED	EACH	2	2	
A2005916	TREE, PLATANUS X ACERIFOLIA BLOODGOOD (BLOODGOOD LONDON PLANETREE), 2" CALIPER, BALLED AND BURLAPPED	EACH	4	4	
A2006820	TREE, QUERCUS MUEHLENBERGII (CHINKAPIN OAK), 2-1/2" CALIPER, BALLED AND BURLAPPED	EACH	3	3	
B2001168	TREE, CERCIS CANADENSIS (EASTERN REDBUD), 7' HEIGHT, CLUMP FORM, BALLED AND BURLAPPED	EACH	8	8	
B2004520	TREE, MALUS RED JEWEL (RED JEWEL CRAB APPLE), 2-1/2" CALIPER, TREE FORM, BALLED AND BURLAPPED	EACH	11	11	
B2005726	TREE, PYRUS CALLERYANA CHANTICLEER (CHANTICLEER CALLERY PEAR), 3" CALIPER, TREE FORM, BALLED AND BURLAPPED	EACH	12	12	
C2002365	SHRUB, DIERVILLA LONICERA (BUSH HONEY SUCKLE), 5-GALLON	EACH	103	103	
C2005865	SHRUB, RHUS AROMATICA GRO-LOW (GRO-LOW FRAGRANT SUMAC), 5-GALLON	EACH	307	307	
C2010824	SHRUB, SYMPHORICARPOS ORBICULATUS (INDIAN CURRANT CORALBERRY), 2' HEIGHT, BALLED AND BURLAPPED	EACH	90	90	
C2C01663	SHRUB, CORNUS RACEMOSA (GRAY DOGWOOD), CONTAINER GROWN, 3-GALLON	EACH	25	25	
C2C01865	SHRUB, ARONIA MELANOCARPA (BLACK CHOKEBERRY), CONTAINER GROWN, 5-GALLON	EACH	18	18	
C2C03432	SHRUB, HYDRANGEA QUERCIFOLIA (OAKLEAF HYDRANGEA), 2' HEIGHT, CONTAINER	EACH	8	8	

* DENOTES SPECIALTY ITEMS Δ SEE SPECIAL PROVISIONS

N:\07785\PROJECTS\104 - N0817266-LEWIS\001.DWG - 10/18/2012 10:56:03 AM
 BONDHOLD - N:\5-8884\AN\VALU.LIC - FRANK.ZY.2202\20477-88\UTIL\CAUV\87266\SHEETS\087355-51T-5002.DWG

FILE NAME =	USER NAME = #USER#	DESIGNED - JM	REVISED -	STATE OF ILLINOIS DEPARTMENT OF TRANSPORTATION	SUMMARY OF QUANTITIES 2			F.A.S. -	SECTION	COUNTY	TOTAL SHEETS	SHEET NO.
SCALE =	PLOT SCALE = #SCALE#	DRAWN - MDN	REVISED -					1279	06-00017-01-LS	LA SALLE	29	4
DATE = #DATE#	PLOT DATE = #DATE#	CHECKED - JB	REVISED -		SCALE: SHEET NO. 2 OF 4 SHEETS STA. TO STA.			FED. ROAD DIST. NO. ILLINOIS FED. AID PROJECT		CONTRACT NO. 87355		
		DATE - 10/19/12	REVISED -									


SUMMARY OF QUANTITIES

80% FEDERAL
20% VILLAGE
TE L22

CODE NO.	ITEM	UNIT	TOTAL QUANTITY	
				0031 ITEP
C2C03520	SHRUB, HYDRANGEA PANICULATA (LIME LIGHT PANICLE HYDRANGEA), 2' HEIGHT, CONTAINER GROWN	EACH	9	9
C2C04524	SHRUB, MYRICA PENSYLVANICA (BAYBERRY), 2' HEIGHT, CONTAINER	EACH	6	6
C2C06004	SHRUB, RHUS COPALLINA VAR. LATIFOLIA MORTON (PRAIRIE FLAME SHINING SUMAC), 3' HEIGHT, CONTAINER	EACH	2	2
C2C06218	SHRUB, RIBES AMERICANUM (WILD BLACK CURRANT), 18" HEIGHT, CONTAINER	EACH	11	11
C2C09636	SHRUB, SAMBUCUS CANADENSIS (AMERICAN ELDER), 3' HEIGHT, CONTAINER	EACH	8	8
C2C10065	SHRUB, VIBURNUM LENTAGO (NANNYBERRY), CONTAINER GROWN, 5-GALLON	EACH	3	3
C2C10218	SHRUB, SPIREA JAPONICA LITTLE PRINCESS (LITTLE PRINCESS JAPANESE SPIREA), 18" HEIGHT, CONTAINER	EACH	49	49
C2C10924	SHRUB, SYRINGA MEYERI PALIBIN (DWARF KOREAN LILAC), 2' HEIGHT, CONTAINER	EACH	89	89
C2C11736	SHRUB, VIBURNUM DENTATUM (ARROWWOOD VIBURNUM), 3' HEIGHT, CONTAINER	EACH	41	41
D2001784	EVERGREEN, PICEA ABIES (NORWAY SPRUCE), 7' HEIGHT, BALLED AND BURLAPPED	EACH	3	3
D2002184	EVERGREEN, PICEA PUNGENS (COLORADO SPRUCE), 7' HEIGHT, BALLED AND BURLAPPED	EACH	1	1
D2002284	EVERGREEN, PICEA PUNGENS GLAUCA (COLORADO BLUE SPRUCE), 7' HEIGHT, BALLED AND BURLAPPED	EACH	7	7
K0012970	PERENNIAL PLANTS, BULB TYPE	UNIT	52	52
K0012990	PERENNIAL PLANTS, ORNAMENTAL TYPE, GALLON POT	UNIT	53	53

* DENOTES SPECIALTY ITEMS Δ SEE SPECIAL PROVISIONS

10/17/2012 10:59:56 AM C:\WORK\12755\12755\SHEETS\060003\SUMMARY OF QUANTITIES 3.DWG
 10/17/2012 10:59:56 AM C:\WORK\12755\12755\SHEETS\060003\SUMMARY OF QUANTITIES 3.DWG
 10/17/2012 10:59:56 AM C:\WORK\12755\12755\SHEETS\060003\SUMMARY OF QUANTITIES 3.DWG

FILE NAME :	USER NAME : #USER#	DESIGNED - JM	REVISED -	STATE OF ILLINOIS DEPARTMENT OF TRANSPORTATION	SUMMARY OF QUANTITIES 3			F.A.S. RTE.	SECTION	COUNTY	TOTAL SHEETS	SHEET NO.	
#FILE#		DRAWN - MDN	REVISED -		SCALE:	SHEET NO. 3 OF 4 SHEETS	STA.	TD. STA.	1279	06-00017-01-L5	LA SALLE	29	5
 exp U.S. Services Inc. CHICAGO, IL BUILDINGS-CATCH & ENVIRONMENT-ENERGY INFRASTRUCTURE-SUSTAINABILITY		CHECKED - JB	REVISED -		CONTRACT NO. 87355		FED. ROAD DIST. NO. ILLINOIS FED. AID PROJECT						
		DATE - 10/19/12	REVISED -										

SUMMARY OF QUANTITIES

80% FEDERAL
20% VILLAGE
ACTE L22

CCDE NO.	ITEM	UNIT	TOTAL QUANTITY	0031 ITEP		
Δ K1003460	LANDSCAPE MAINTENANCE	CAL MO	6	6		
Δ X0301115	LANDSCAPE EDGING	FOOT	177	177		
Δ * X0323553	ORNAMENTAL FENCE, WROUGHT IRON	FOOT	846	846		
Δ * X0327068	PAVEMENT COLOR AND TEXTURE (SPECIAL)	SQ YD	359	359		
Δ * X0795800	COARSE AGGREGATE	TON	5	5		
Δ X2110100	TOPSOIL FURNISH AND PLACE, SPECIAL	CU YD	103	103		
Δ * X4240430	PORTLAND CEMENT CONCRETE SIDEWALK 5 INCH, SPECIAL	SQ FT	3,230	3,230		
Δ * XX005642	GATEWAY MONUMENT SIGN COMPLETE	EACH	2	2		
Δ * XX007415	MONUMENT TYPE A	EACH	4	4		
Δ * Z0004002	BOLLARDS	EACH	5	5		

• DENOTES SPECIALTY ITEMS Δ SEE SPECIAL PROVISIONS

ANDERSON, BONDUR, JON... 10-17-2012, 10:56:00...

FILE NAME : #FILE#	USER NAME = #USER#	DESIGNED - JM DRAWN - MDN CHECKED - JB DATE - 10/19/12	REVISED - REVISED - REVISED -	STATE OF ILLINOIS DEPARTMENT OF TRANSPORTATION	SUMMARY OF QUANTITIES 4	F.A.S. RTE. 1279	SECTION 06-00017-01-LS	COUNTY LA SALLE	TOTAL SHEETS 29	SHEET NO. 6
	PLOT SCALE = #SCALE# PLOT DATE = #DATE#	SCALE:	SHEET NO. 4 OF 4 SHEETS STA. 70 STA.			FED. ROAD DIST. NO.	ILLINOIS FED. AID PROJECT			

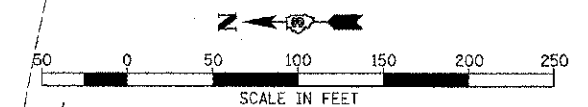
PROP. CURVE
 PI STA. = 13+73.06
 Δ = 20° 54' 51" (LT)
 D = 20° 35' 05"
 R = 278.34'
 T = 51.37'
 L = 101.60'
 E = 4.70'
 θ =
 P.C. STA. = 13+21.69
 P.T. STA. = 14+23.29

PROP. CURVE
 PI STA. = 12+59.78
 Δ = 48° 18' 27" (RT)
 D = 46° 34' 55"
 R = 123.00'
 T = 55.16'
 L = 103.70'
 E = 11.80'
 θ =
 P.C. STA. = 12+04.62
 P.T. STA. = 13+08.33

PROP. CURVE
 PI STA. = 11+83.86
 Δ = 9° 32' 26" (LT)
 D = 22° 55' 06"
 R = 250.00'
 T = 20.86'
 L = 41.63'
 E = 0.87'
 θ =
 P.C. STA. = 11+62.98
 P.T. STA. = 12+04.62

STA. 19+66.88 LINCOLN STREET
 STA. 13+15.29 MILL STREET
 N = 1703940.793
 E = 798722.895

CONTROL POINT #15
 N = 1703879.462
 E = 798694.630



CONTROL POINT #14
 N = 1703334.287
 E = 798527.514

STA. 11+62.99, PC
 N = 1703808.789
 E = 798659.035

STA. 7+00.00
 N = 1703362.606
 E = 798535.405

STA. 46+29.17
 N = 1703334.265
 E = 798527.361

PROP. CURVE
 PI STA. = 16+08.18
 Δ = 31° 37' 04" (RT)
 D = 19° 05' 55"
 R = 300.00'
 T = 84.94'
 L = 165.55'
 E = 11.79'
 θ = NORMAL CROWN
 P.C. STA. = 15+23.24
 P.T. STA. = 16+88.79

STA. 16+88.79, PT
 N = 1704073.408
 E = 798478.464

STA. 16+08.18, PI
 N = 1704113.915
 E = 798403.803

STA. 34+80.56
 N = 1703773.834
 E = 798317.074

PROP. CURVE
 PI STA. = 170+82.22
 Δ = 12° 22' 51" (LT)
 D = 1° 20' 19"
 R = 4,280.00'
 T = 464.23'
 L = 924.84'
 E = 25.10'
 θ = NORMAL CROWN
 P.C. STA. = 166+17.99
 P.T. STA. = 175+42.83

STA. 15+23.24, PC
 N = 1704109.269
 E = 798318.988

STA. 170+62.33 IL ROUTE 178 (RELOCATED)
 STA. 32+79.43 GROVE STREET
 N = 1703780.874
 E = 798116.070

CONTROL POINT #3
 N = 1703788.162
 E = 798067.652

CONTROL POINT #17
 N = 1704516.829
 E = 798100.716

CONTROL POINT #2
 N = 1704374.598
 E = 798099.257

STA. 163+30.01, PI
 N = 1704516.957
 E = 798100.752

STA. 164+68.02, PT
 N = 1704374.599
 E = 798099.257

STA. 167+45.46 IL ROUTE 178 (RELOCATED)
 STA. 13+02.17 LINCOLN STREET
 N = 1704097.175
 E = 798098.243

STA. 161+87.64, PC
 N = 1704647.103
 E = 798043.043

STA. 160+00
 N = 1704818.640
 E = 797966.981

CONTROL POINT #1
 N = 1704107.486
 E = 798095.950

STA. 166+17.99, PC
 N = 1704224.634
 E = 798097.683

STA. 170+82.22, PI
 N = 1703760.432
 E = 798092.809

STA. 50+00
 N = 1703746.921
 E = 798055.822

BENCHMARK "100"
 CHISELED "X" ON EAST BOLT ON FIRE HYDRANT
 AT SOUTHWEST CORNER OF GROVE STREET AND MILL STREET
 ELEV. 482.49

BENCHMARK "102"
 CHISELED "X" ON TOP OF 5/8 BOLT ON FIRE HYDRANT
 AT S.E. CORNER OF GROVE STREET AND ILL ROUTE 178
 ELEV. 482.94

BENCHMARK "103"
 CHISELED "X" ON NORTH BOLT OF FIRE
 HYDRANT AT N.E. CORNER OF CHURCH
 STREET AND DIVISION STREET
 ELEV. 479.20

STA. 175+42.83, PT
 N = 1703305.978
 E = 798187.577

STA. 174+09.53 IL ROUTE 178 (RELOCATED)
 STA. 42+50.06 CHURCH STREET
 N = 1703436.875
 E = 798162.401

CONTROL POINT #4
 N = 1703488.797
 E = 797978.620

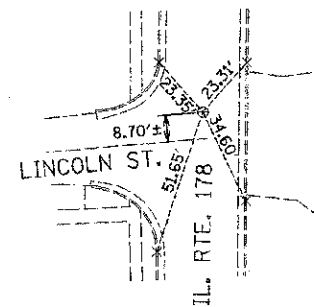
STA. 52+69.66 DIVISION STREET
 STA. 40+59.11 CHURCH STREET
 N = 1703488.557
 E = 797978.578

STA. 40+00
 N = 1703504.555
 E = 797921.676

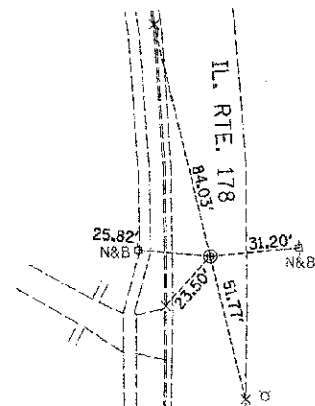
NOTE:
 INFORMATION ON THIS SHEET FROM CONTRACT 66547

SEE SHEET 9 FOR SWING TIES
 TO CONTROL POINTS.

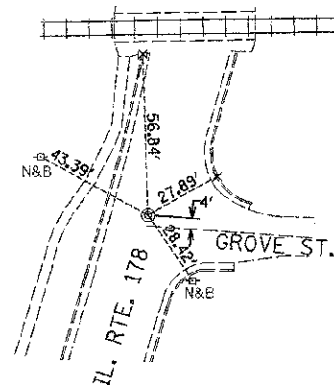
FILE NAME 0366847-SH1-ATB.DGN	USER NAME	DESIGNED - JKC	REVISED	STATE OF ILLINOIS DEPARTMENT OF TRANSPORTATION	IL RTE 178 (RELOCATED) ALIGNMENT & TIES	F.A.S. R.T.E.	SECTION	COUNTY	TOTAL SHEETS	SHEET NO.
	PLOT SCALE = 1"=50'	CHECKED - JKC/LAG	REVISED			1279	06-00017-00-LS	LASALLE	29	7
	PLOT DATE = 08/10	DATE - 08/10	REVISED			SCALE: 1"=50'	SHEET NO. OF SHEETS	STA. 160+00 TO STA. 176+00	FED. ROAD DIST. NO.	ILLINOIS FED. AID PROJECT
								CONTRACT NO. 87355		



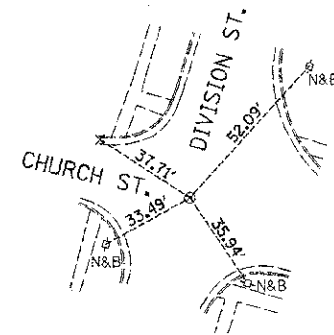
CONTROL POINT #1



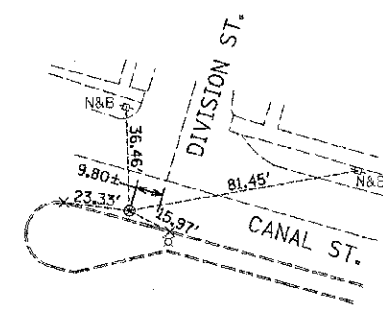
CONTROL POINT #2



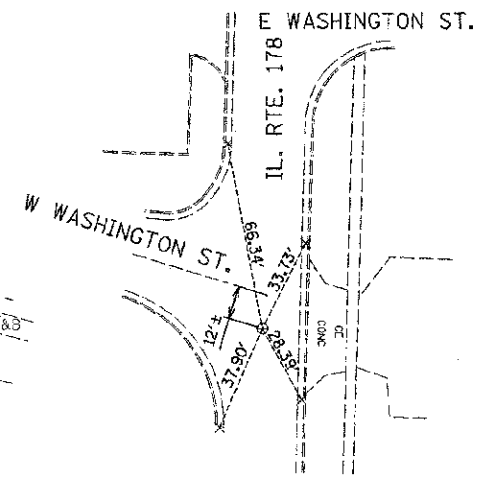
CONTROL POINT #3



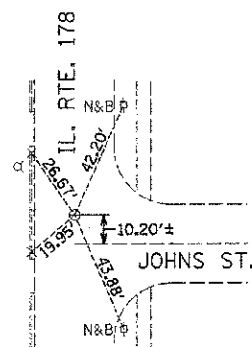
CONTROL POINT #4



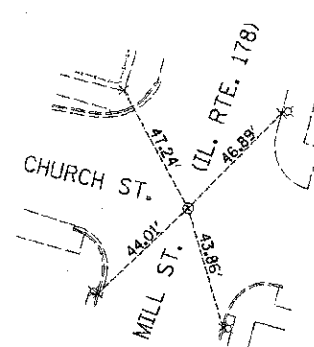
CONTROL POINT #5



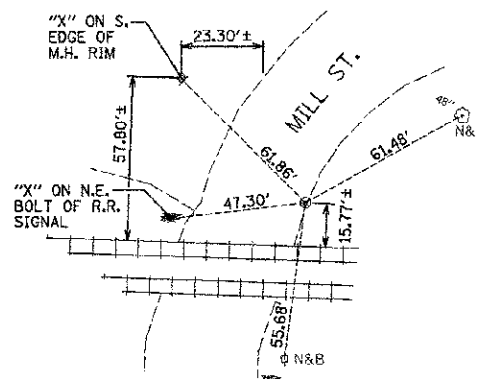
CONTROL POINT #8



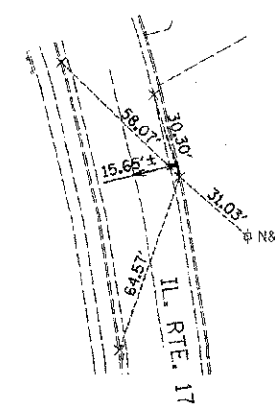
CONTROL POINT #9



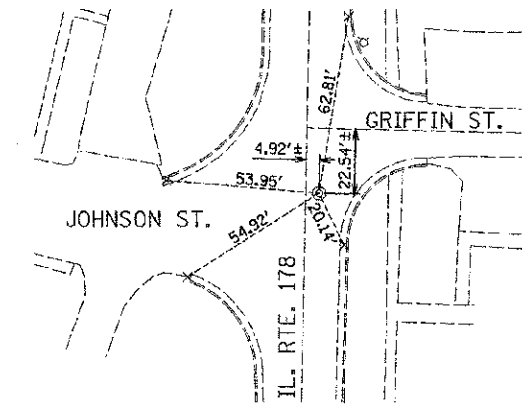
CONTROL POINT #14



CONTROL POINT #15



CONTROL POINT #17



CONTROL POINT #900

LEGEND

- ⊙ CONCRETE NAIL
- ⊗ MAC NAIL
- ⊕ BRASS PLUG
- × CHISELED "X"
- N&B NAIL & BOTTLE CAP

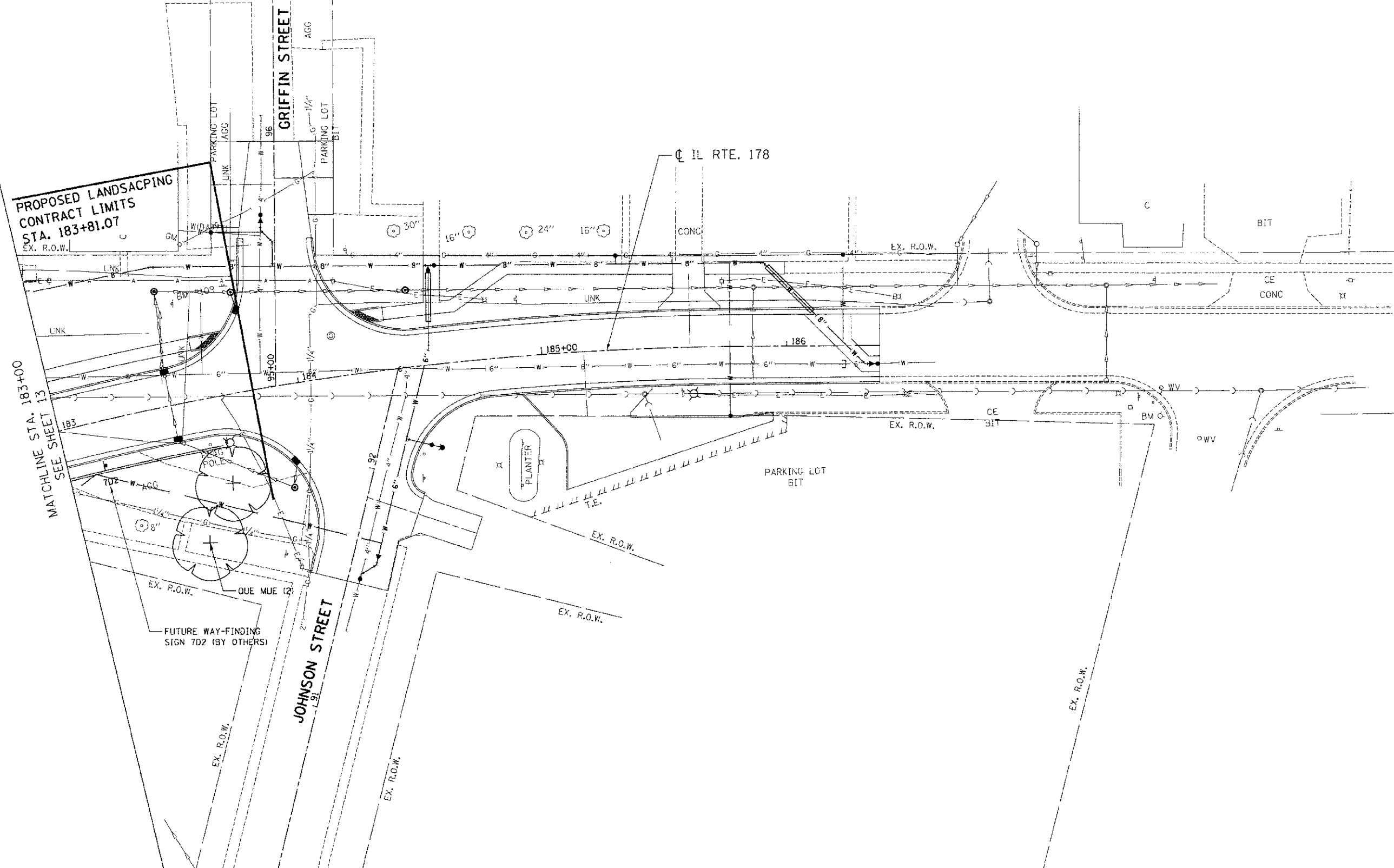
NOTE:
INFORMATION ON THIS SHEET FROM CONTRACT 66547

FILE NAME = D36647-SHT-4TB.GCN	USER NAME = ---	DESIGNED - JKC	REVISED -	STATE OF ILLINOIS DEPARTMENT OF TRANSPORTATION	IL RTE 178 (RELOCATED) ALIGNMENT & TIES	F.A.S. RTE. 1278	SECTION 06-00017-00-LS	COUNTY LASALLE	TOTAL SHEETS 29	SHEET NO. 9
	PLOT SCALE = 1"=50'	CHECKED - JKC	REVISED -			SCALE: 1"=50'	SHEET NO. ___ OF ___ SHEETS	STA. 160+00 TO STA. 176+00	FED. ROAD DIST. NO. - [ILLINOIS] FED. AID PROJECT CONTRACT NO. 87355	
PLOT DATE = 09/10	DATE = 08/10	REVISED -	REVISED -							



**PROPOSED LANDSCAPING
CONTRACT LIMITS
STA. 183+81.07**

**MATCHLINE STA. 183+00
SEE SHEET 13**



**STATE OF ILLINOIS
DEPARTMENT OF TRANSPORTATION**

PROPOSED LANDSCAPING PLANS 5

SCALE: 1"=20'
SHEET NO. 5 OF 5 SHEETS STA. TO STA.



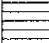


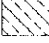
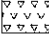




F.A.S. RTE.	SECTION	COUNTY	TOTAL SHEETS	SHEET NO.
1279	06-00017-01-LS	LA SALLE	29	14
FED. ROAD DIST. NO. [ILLINOIS] FED. AID PROJECT			CONTRACT NO. 87355	



exp U.S. Service Inc. Chicago, IL
BUILDINGS-ENVIRONMENT-ENERGY
INDUSTRIAL-INFRASTRUCTURE-SUSTAINABILITY

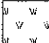
FILE NAME =	USER NAME = #USER#	DESIGNED - JM	REVISED -
#FILE#		DRAWN - MDN	REVISED -
	PLOT SCALE = #SCALE#	CHECKED - JB	REVISED -
	PLOT DATE = #DATE#	DATE - 10/19/12	REVISED -

LEGEND CODE TYPICALLY EQUALS FIRST THREE LETTERS OF THE BOTANICAL AND/OR COMMON NAME.

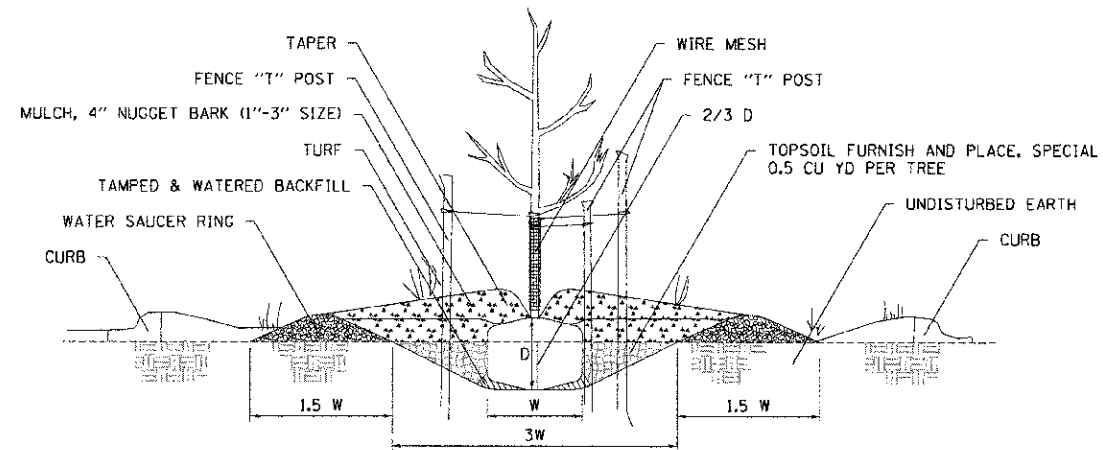
GRASSES	CODE	BOTANICAL NAME / COMMON NAME (PAID FOR AS PERENNIAL PLANTS, ORNAMENTAL TYPE, GALLON POT)	CONTAINER	QUANTITY	PLANTING SEASON: SPRING, FALL OR EITHER
*	PAN SHA	PANICUM VIRCATUM 'SHENENDOAH' / BURGUNDY/RED SWITCH GRASS	1 GAL	148	EITHER
*	SPD TA2	SPOROBOLUS HETEROLEPIS 'TARA' / PRAIRIE DRCPSEED	1 GAL	225	EITHER

GROUND COVERS	CODE	BOTANICAL NAME / COMMON NAME (PAID FOR AS PERENNIAL PLANTS, ORNAMENTAL TYPE, GALLON POT)	CONTAINER	QUANTITY	PLANTING SEASON: SPRING, FALL OR EITHER
	AMS HUB	AMSONIA HUBRICHII / ARKANSAS BLUE-STAR	1 GAL @ 24" OC	136	EITHER
	EUO PUR	EUONYMUS COLORATUS / PURPLE WINTERCREEPER	4" POT @ 12" OC	893	EITHER
	HEM ORO	HEMFROCALIIS X 'STELLA DE ORO' / STELLA DE ORO DAYLILY	1 GAL @ 12" OC	980	EITHER
	LIR CRE	LIRIOPE SPICATA / CREEPING LILY TURF	1 GAL @ 12" OC	562	EITHER
	MIX NEO	MIX PERENNIALS ERAGROSTIS SPECTABILIS/ PURPLE LOVEGRASS AND SEDUM SPECTABILE 'NEON' / 'NEON' STONECROP	1 GAL @ 12" OC	951	EITHER
	MIX CAL	MIX PERENNIALS ALLIUM TANGUTICUM 'SUMMER BEAUTY' / 'SUMMER BEAUTY' ORNAMENTAL CHIVE AND CALAMINTHA NEPETA 'MONTROSE WHITE' / 'MONTROSE WHITE' CALAMIN	1 GAL @ 16" OC	304	EITHER
	MIX TAR	MIX PERENNIALS ALLIUM CFRNUJUM / NODDING ONION AND CAREX PENNSYLVANICA / PENNSYLVANIA SEDGE AND JUNCUS TENUIS / POVERTY RUSH AND SPOROBOLUS HETEROLEPIS 'TARA' / 'TARA' PRAIRIE DROPSEED	1 GAL @ 18" OC	343	EITHER
	MIX PER	MIX PERENNIALS ASTER / ASTER WOODS LT BLUE AND COREOPSIS / COREOPSIS ZAGREB	1 GAL @ 15" OC	168	EITHER
	MIX LAE	MIX PERENNIALS LIMONIUM LATIFOLIUM / SEA LAVENDER AND ORIGANUM LAEVIGATUM 'HERRENHAUSEN' / HERRENHAUSEN ORFGANO	1 GAL @ 15" OC	283	EITHER
	NEP WAL	NEPETA X FAASSENII 'WALKERS LOW' / WALKERS LOW CATMINT	1 GAL @ 24" OC	126	EITHER
	PER LIT	PEROVSKIA ATRIPI ICIFOLIA 'LITTLE SPIRE' TM / LITTLE SPIRE RUSSIAN SAGE	1 GAL @ 18" OC	194	EITHER

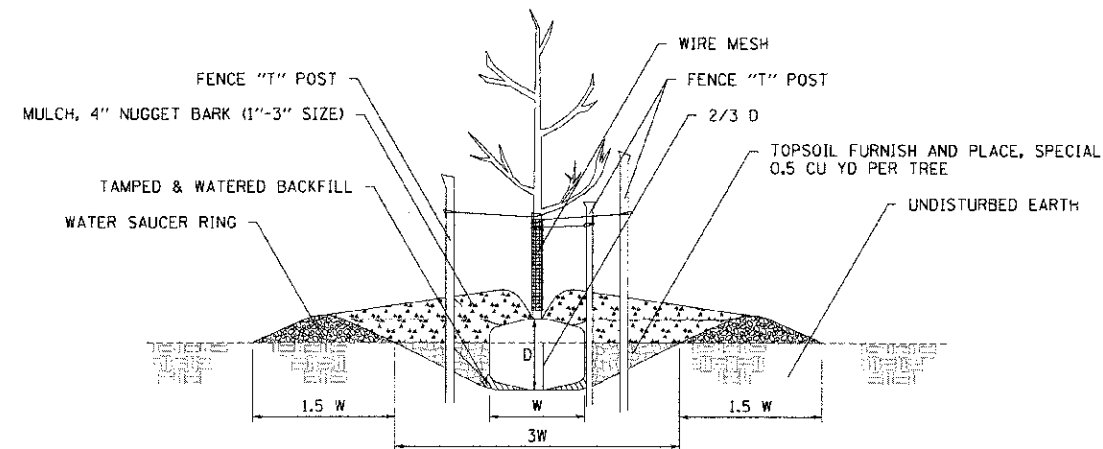
GROUND COVERS	CODE	BOTANICAL NAME / COMMON NAME (PAID FOR AS PERENNIAL PLANTS, BULB TYPE)	CONTAINER	QUANTITY	PLANTING SEASON: SPRING, FALL OR EITHER
	MIX DAF	MIX BULBS HYACINTH ORIENTALIS / SKY JACKET HYACINTH AND NARCISSUS X 'ICE FOLLIES' / ICE FOLLIES DAFFODIL	BULB	682	FALL
	MIX TUL	MIX BULBS TULIPA X 'SHIRLEY' / SHIRLEY TULIP AND TULIPA X 'CUM LAUDE' / CUM LAUDE TULIP	BULB	4,477	FALL

SEEDING	SEEDING TYPE	QUANTITY	PLANTING SEASON: SPRING, FALL OR EITHER
	SODDING, SALT TOLERANT NITROGEN FERTILIZER NUTRIENT PHOSPHORUS FERTILIZER NUTRIENT POTASSIUM FERTILIZER NUTRIENT	413 SQ YD 5 LBS EACH	EITHER

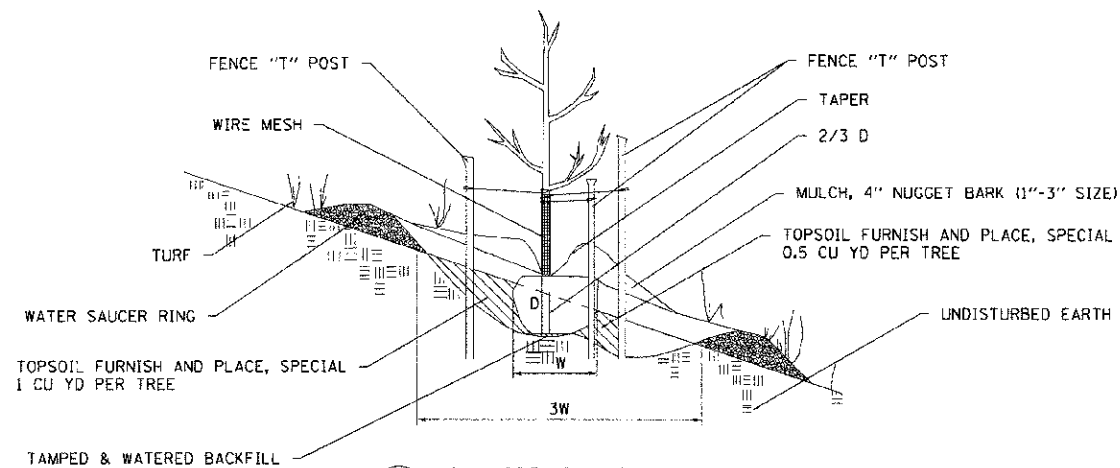
C:\3137806-ARBORCULCUN...N0182785-407 TEL.DOC
 10/17/2012 10:56:45
 BONDHUJD \\\FS-0084\AMAVAUJLQ-TRANS 07\2282\20477-001\CIVIL\CAD\87385\SCHEM\C287355-SHT SCHEDULE2.DWG



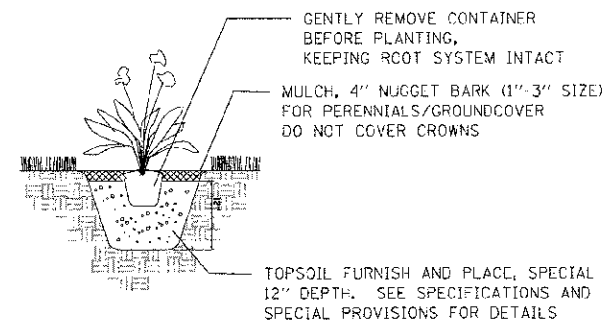
1 PARKWAY PLANTING DETAIL
NOT TO SCALE



2 FLAT GROUND PLANTING DETAIL
NOT TO SCALE

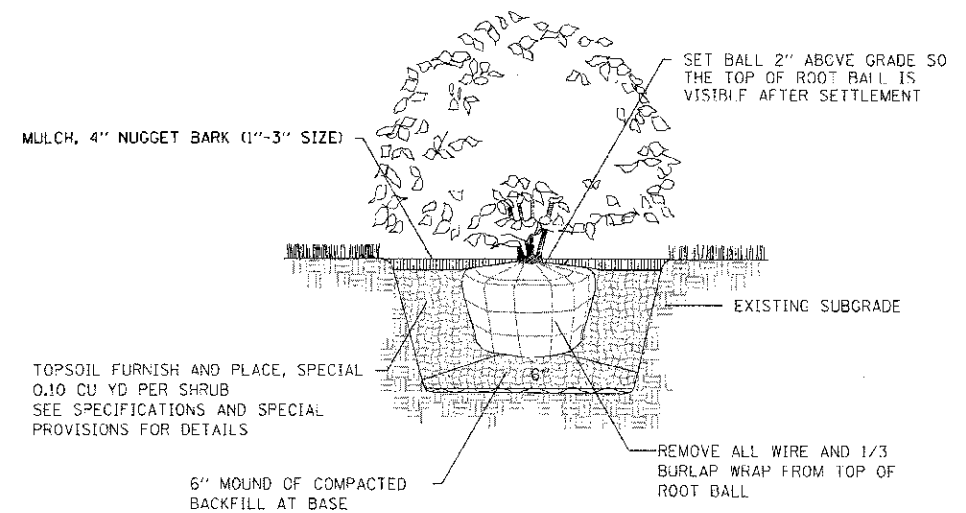


3 HILLSIDE PLANTING DETAIL
NOT TO SCALE



4 PERENNIAL/GROUNDCOVER PLANTING DETAIL
NOT TO SCALE

NOTE: PLANTING RELATIONSHIPS VARY
SEE LANDSCAPE PLAN FOR DETAILS



5 SHRUB PLANTING DETAIL
NOT TO SCALE

NOTE: PRUNING SHALL NOT CHANGE THE HABIT OF THE TREE. ALL CUTS SHALL BE MADE JUST OUTSIDE THE BRANCH BARK RIDGE AND COLLAR, ANGLING AWAY FROM THE STEM. PRUNING SHALL BE LIMITED TO THE REMOVAL OF COMPETING LEADERS, OR DEAD, RUBBING, BROKEN OR DAMAGED BRANCHES AND ONLY AT THE DIRECTION OF THE R.E.

TREE PLANTING TABLE

TREE SIZE CALIPER	SHRUB TREE HEIGHT	EVERGREEN HEIGHT	MIN DIAMETER BALL W	MIN DEPTH BALL D	HOLE DEPTH 2/3 D	HOLE WIDTH 3 W
1/4 IN	2 FT	1.5 FT	10 IN	10 IN	7 IN	30 IN
1/2	3	2	12	12	8	36
3/4	4	3	14	14	9	42
1	5	4	16	16	11	48
1 1/4	6	4 1/2	18	18	12	54
1 1/2	7	5	20	20	13	60
1 3/4	8	6	22	22	15	66
2	9	7	24	24	16	72
2 1/2	10	8	28	28	19	84
3	11	9	32	32	21	96

\S:\4244\AKA\VALU\LD-TRANS-07-2282\20477-00\ACIVIL\CAD\87355\SHEETS\087385-SHT-ROADDET2.DGN
 BONDHULLO
 10-17-2012 10:58:52
 \S:\4244\AKA\VALU\LD-TRANS-07-2282\20477-00\ACIVIL\CAD\87355\SHEETS\087385-SHT-ROADDET2.DGN
 BONDHULLO

FILE NAME =	USER NAME = #LSE7*	DESIGNED - JM	REVISED -
DATE = 10/19/12	CHECKED - ACL	DRAWN - JCB	REVISED -
PLOT DATE = 08/17/12	DATE = 10/19/12	FILED =	REVISED -

STATE OF ILLINOIS
DEPARTMENT OF TRANSPORTATION

PROPOSED LANDSCAPING PLANS
PLANTING DETAILS

SCALE: SHEET NO. OF SHEETS STA. TO STA.

F.A.S. RTE. 1273	SECTION 06-00017-01-LS	COUNTY LA SALLE	TOTAL SHEETS 29	SHEET NO. 20
FED. ROAD DIST. NO. ILLINOIS FED. AID PROJECT			CONTRACT NO. 87355	

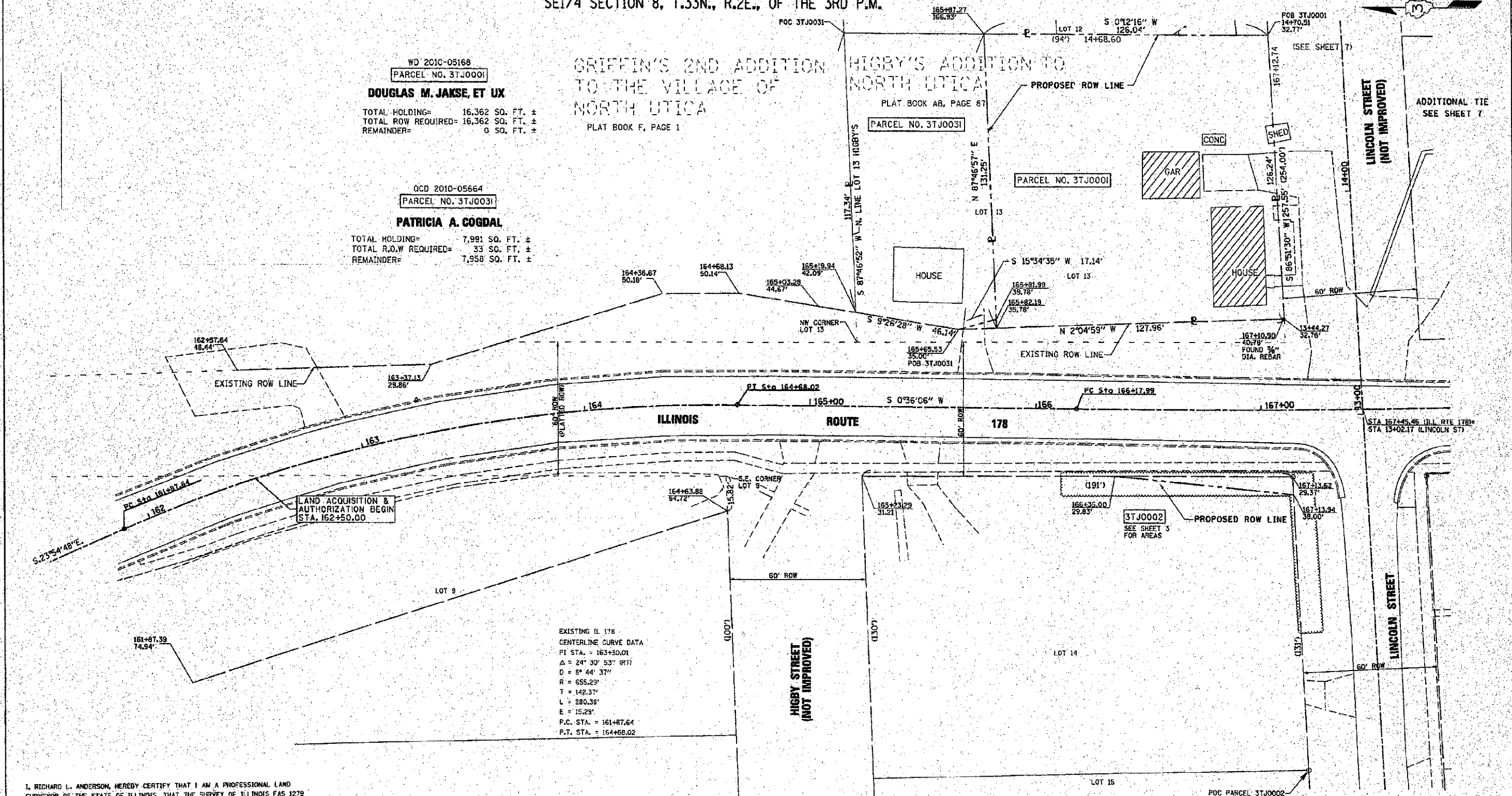
SE1/4 SECTION 8, T.33N., R.2E., OF THE 3RD P.M.

WD 2010-05168
 PARCEL NO. 3TJ0001
DOUGLAS M. JAKSE, ET UX
 TOTAL HOLDING= 16,362 SQ. FT. ±
 TOTAL ROW REQUIRED= 16,362 SQ. FT. ±
 REMAINDER= 0 SQ. FT. ±

QCD 2010-05664
 PARCEL NO. 3TJ0031
PATRICIA A. COGDAL
 TOTAL HOLDING= 7,991 SQ. FT. ±
 TOTAL ROW REQUIRED= 33 SQ. FT. ±
 REMAINDER= 7,958 SQ. FT. ±

GRIFFIN'S 2ND ADDITION
 TO THE VILLAGE OF
 NORTH UTICA
 PLAT BOOK F, PAGE 1

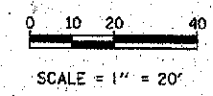
HIGBY'S ADDITION TO
 NORTH UTICA
 PLAT BOOK AB, PAGE 87



LAND ACQUISITION &
 AUTHORIZATION BEGIN
 STA. 162+50.00

EXISTING IL 178
 CENTERLINE CURVE DATA
 P.I. STA. = 163+30.01
 $\Delta = 24^\circ 30' 53''$ (RT)
 $D = 8^\circ 44' 37''$
 $R = 655.23'$
 $T = 142.37'$
 $L = 280.38'$
 $E = 15.29'$
 P.C. STA. = 161+87.64
 P.T. STA. = 164+68.02

NOTE: BEARINGS ARE REFERENCED TO THE ILLINOIS
 STATE PLANE COORDINATE SYSTEM EAST ZONE,
 NAD 83.



RIGHT OF WAY PLANS
 ROUTE FAS 1279 (IL 178)
 SECTION 6R, B6R, B
 PROJECT HD-1279(103)
 COUNTY LASALLE
 JOB NO. R-93-001-05
 STA 160+00 TO STA 166+00
 SCALE 1" = 20'

I, RICHARD L. ANDERSON, HEREBY CERTIFY THAT I AM A PROFESSIONAL LAND SURVEYOR OF THE STATE OF ILLINOIS, THAT THE SURVEY OF ILLINOIS FAS 1279 (ROUTE 178) WAS MADE UNDER MY DIRECTION AND THAT THE SURVEY IS TRUE AND COMPLETE AS SHOWN TO THE BEST OF MY KNOWLEDGE AND BELIEF, THAT ALL MONUMENTS AND MARKS ARE OF THE CHARACTER AND OCCUPY THE POSITION SHOWN THEREON, AND ARE SUFFICIENT TO ENABLE THE SURVEY TO BE RETRACED. THIS PROFESSIONAL SERVICE CONFORMS TO THE CURRENT ILLINOIS MINIMUM STANDARDS FOR A BOUNDARY SURVEY.

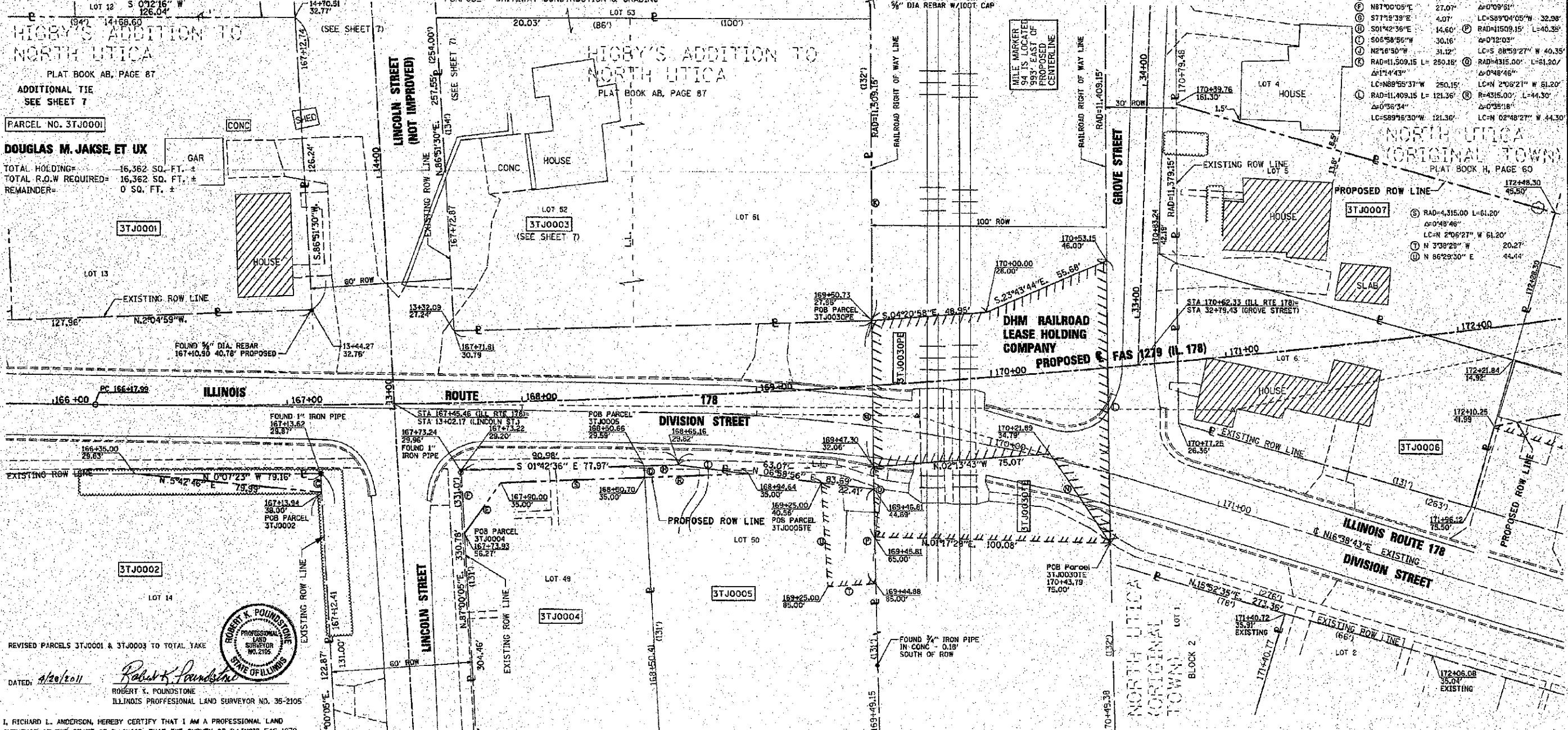
DATED July 07, 2009
 BY *Richard L. Anderson*
 RICHARD L. ANDERSON
 ILLINOIS PROFESSIONAL LAND SURVEYOR NO. 35-3049
 LICENSE EXPIRES NOVEMBER 30, 2010



PLOT DATE = 8/22/2010
 FILE NAME = c:\p\work\11\110801\110801.dwg
 PLOT SCALE = 200000 / 1
 DWP NAME = 110801.dwg

WD 2010-06430 PARCEL NO. 3TJ0002 JAMES E. DIDRICKSEN, ET UX
WD 2010-22013 PARCEL NO. 3TJ0004 JOHN R. MEADOR, ET AL
WD 2010-22014 PARCEL NO. 3TJ0005 JOHN R. MEADOR, ET AL
WD 2010-13400 PARCEL NO. 3TJ0006 CHARLES E. HAYSON, ET UX
WD 2010-20891 PARCEL NO. 3TJ0007 JOHN YODUAL

TOTAL HOLDING= 25,152 SQ. FT. ±
TOTAL R.O.W REQUIRED= 322 SQ. FT. ±
REMAINDER= 24,830 SQ. FT. ±
TOTAL HOLDINGS= 10,218 SQ. FT. ±
TOTAL R.O.W REQUIRED= 615 SQ. FT. ±
REMAINDER= 9,603 SQ. FT. ±
TOTAL HOLDING= 12,599 SQ. FT. ±
TOTAL R.O.W REQUIRED= 165 SQ. FT. ±
REMAINDER= 12,434 SQ. FT. ±
TEMPORARY EASEMENT AREA= 898 SQ. FT. ±
PURPOSE= DRIVEWAY CONSTRUCTION & GRADING
TOTAL HOLDING= 9,217 SQ. FT. ±
TOTAL R.O.W REQUIRED= 9,217 SQ. FT. ±
REMAINDER= 0 SQ. FT. ±
TOTAL HOLDING= 10,493 SQ. FT. ±
TOTAL R.O.W REQUIRED= 10,493 SQ. FT. ±
REMAINDER= 0 SQ. FT. ±



REVISOR PARCELS 3TJ0001 & 3TJ0003 TO TOTAL TAKE
DATED: 4/20/2011
ROBERT K. POUNDSTONE
ILLINOIS PROFESSIONAL LAND SURVEYOR NO. 35-2105
I, RICHARD L. ANDERSON, HEREBY CERTIFY THAT I AM A PROFESSIONAL LAND SURVEYOR OF THE STATE OF ILLINOIS, THAT THE SURVEY OF ILLINOIS FAS 1279 (ROUTE 178) WAS MADE UNDER MY DIRECTION, AND THAT THE SURVEY IS TRUE AND COMPLETE AS SHOWN TO THE BEST OF MY KNOWLEDGE AND BELIEF, THAT ALL MONUMENTS AND MARKS ARE OF THE CHARACTER AND OCCUPY THE POSITION SHOWN THEREON, AND ARE SUFFICIENT TO ENABLE THE SURVEY TO BE RETRACED. THIS PROFESSIONAL SERVICE CONFORMS TO THE CURRENT ILLINOIS MINIMUM STANDARDS FOR A BOUNDARY SURVEY.
DATED: 4/20/2011
RICHARD L. ANDERSON
ILLINOIS PROFESSIONAL LAND SURVEYOR NO. 35-3049
LICENSES EXPIRES NOVEMBER 30, 2010

POC PARCEL 3TJ0002 SW COR LOT 14 SET 3/4" DIA. REBAR W/ "100T" CAP
POC PARCEL 3TJ0004, 3TJ0005, & 3TJ0005TE FOUND 1" PIPE NW CORNER LOT 45

PE 2010-25723
PARCEL NO. 3TJ0030PE
DHM RAILROAD LEASE HOLDING COMPANY
PERMANENT EASEMENT AREA= 7,145 SQ. FT. ±
PURPOSE= ROUTE 178 CONSTRUCTION
TEMPORARY EASEMENT AREA= 3,116 SQ. FT. ±
PURPOSE= PAVEMENT REMOVAL & GRADING

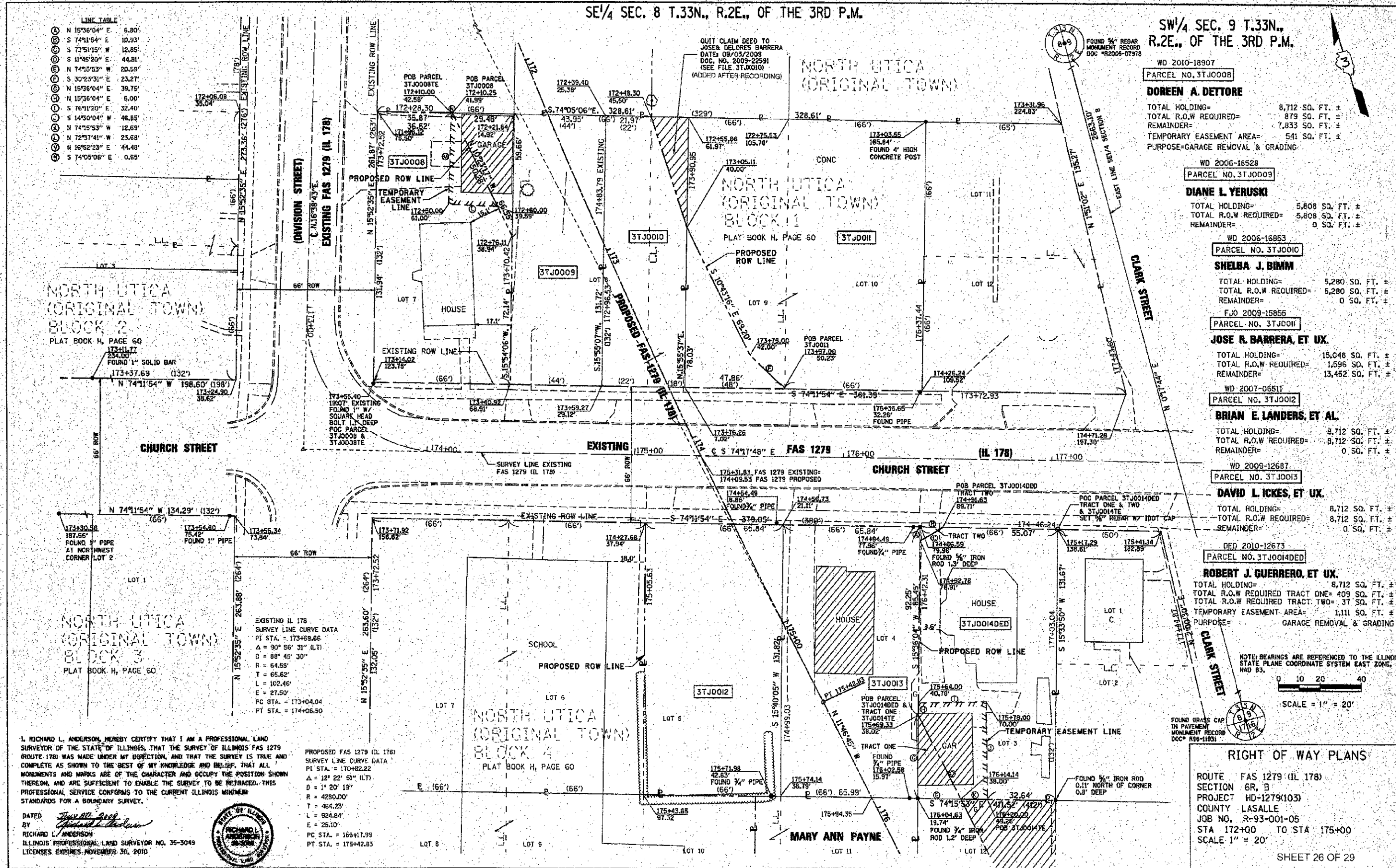
NOTE: BEARINGS ARE REFERENCED TO THE ILLINOIS STATE PLANE COORDINATE SYSTEM EAST ZONE, NAD 83.
RIGHT OF WAY PLANS
ROUTE FAS 1279 (IL 178)
SECTION 6R, B
PROJECT HD-1279(103)
COUNTY LASALLE
JOB NO. R-93-001-05
STA 166+00 TO STA 172+00
SCALE 1" = 20'
SHEET 25 OF 29
CONTRACT # 87355

SE 1/4 SEC. 8 T.33N., R.2E., OF THE 3RD P.M.

SW 1/4 SEC. 9 T.33N., R.2E., OF THE 3RD P.M.

LINE TABLE

Ⓐ	N 15°36'04" E	6.80'
Ⓑ	S 74°11'54" E	10.93'
Ⓒ	S 72°51'15" W	12.85'
Ⓓ	S 11°45'20" E	44.81'
Ⓔ	N 74°15'53" W	20.59'
Ⓕ	S 30°23'31" E	23.27'
Ⓖ	N 15°36'04" E	39.75'
Ⓗ	N 15°36'04" E	6.00'
Ⓘ	S 76°11'20" E	32.40'
Ⓚ	S 14°30'04" W	46.85'
Ⓛ	N 74°15'53" W	12.63'
Ⓜ	N 72°51'41" W	23.68'
Ⓝ	N 16°52'23" E	44.48'
Ⓖ	S 74°05'06" E	0.65'



WD 2010-18907
PARCEL NO. 3TJ0008
DOREEN A. DETTORE
 TOTAL HOLDING= 8,712 SQ. FT. ±
 TOTAL R.O.W. REQUIRED= 879 SQ. FT. ±
 REMAINDER= 7,833 SQ. FT. ±
 TEMPORARY EASEMENT AREA= 541 SQ. FT. ±
 PURPOSE= GARAGE REMOVAL & GRADING

WD 2006-16528
PARCEL NO. 3TJ0009
DIANE L. YERUSKI
 TOTAL HOLDING= 5,808 SQ. FT. ±
 TOTAL R.O.W. REQUIRED= 5,808 SQ. FT. ±
 REMAINDER= 0 SQ. FT. ±

WD 2006-16853
PARCEL NO. 3TJ0010
SHELBA J. BIMM
 TOTAL HOLDING= 5,280 SQ. FT. ±
 TOTAL R.O.W. REQUIRED= 5,280 SQ. FT. ±
 REMAINDER= 0 SQ. FT. ±

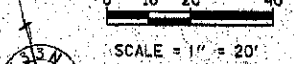
FJO 2009-15855
PARCEL NO. 3TJ0011
JOSE R. BARRERA, ET UX.
 TOTAL HOLDING= 15,046 SQ. FT. ±
 TOTAL R.O.W. REQUIRED= 1,596 SQ. FT. ±
 REMAINDER= 13,452 SQ. FT. ±

WD 2007-06511
PARCEL NO. 3TJ0012
BRIAN E. LANDERS, ET AL.
 TOTAL HOLDING= 8,712 SQ. FT. ±
 TOTAL R.O.W. REQUIRED= 8,712 SQ. FT. ±
 REMAINDER= 0 SQ. FT. ±

WD 2009-12667
PARCEL NO. 3TJ0013
DAVID L. ICKES, ET UX.
 TOTAL HOLDING= 8,712 SQ. FT. ±
 TOTAL R.O.W. REQUIRED= 8,712 SQ. FT. ±
 REMAINDER= 0 SQ. FT. ±

DED 2010-12673
PARCEL NO. 3TJ0014DED
ROBERT J. GUERRERO, ET UX.
 TOTAL HOLDING= 8,712 SQ. FT. ±
 TOTAL R.O.W. REQUIRED TRACT ONE= 409 SQ. FT. ±
 TOTAL R.O.W. REQUIRED TRACT TWO= 37 SQ. FT. ±
 TEMPORARY EASEMENT AREA= 1,111 SQ. FT. ±
 PURPOSE= GARAGE REMOVAL & GRADING

NOTE: BEARINGS ARE REFERENCED TO THE ILLINOIS STATE PLANE COORDINATE SYSTEM EAST ZONE, NAD 83.



RIGHT OF WAY PLANS

ROUTE FAS 1279 (IL 178)
 SECTION 6R, B
 PROJECT HD-1279(103)
 COUNTY LASALLE
 JOB NO. R-93-001-05
 STA 172+00 TO STA 175+00
 SCALE 1" = 20'

I, RICHARD L. ANDERSON, HEREBY CERTIFY THAT I AM A PROFESSIONAL LAND SURVEYOR OF THE STATE OF ILLINOIS, THAT THE SURVEY OF ILLINOIS FAS 1279 (ROUTE 178) WAS MADE UNDER MY DIRECTION, AND THAT THE SURVEY IS TRUE AND COMPLETE AS SHOWN TO THE BEST OF MY KNOWLEDGE AND BELIEF, THAT ALL MONUMENTS AND MARKS ARE OF THE CHARACTER AND OCCUPY THE POSITION SHOWN THEREON, AND ARE SUFFICIENT TO ENABLE THE SURVEY TO BE RETRACED. THIS PROFESSIONAL SERVICE CONFORMS TO THE CURRENT ILLINOIS MINIMUM STANDARDS FOR A BOUNDARY SURVEY.

DATED: *July 21, 2011*
 BY: *Richard L. Anderson*
 RICHARD L. ANDERSON
 ILLINOIS PROFESSIONAL LAND SURVEYOR NO. 35-5049
 LICENSES EXPIRES NOVEMBER 30, 2010



PROPOSED FAS 1279 (IL 178)
 SURVEY LINE CURVE DATA
 PI STA. = 170+82.22
 Δ = 12° 22' 51" (L.T.)
 D = 1° 20' 19"
 R = 4280.00'
 T = 464.23'
 L = 924.84'
 E = 25.10'
 PC STA. = 166+17.99
 PT STA. = 175+42.83

PLOT DATE: 10/10/2011
 FILE NAME: C:\Users\anderson\Documents\10356557\10356557.dwg
 PLOT SCALE: 1" = 20'
 USER NAME: R. Anderson

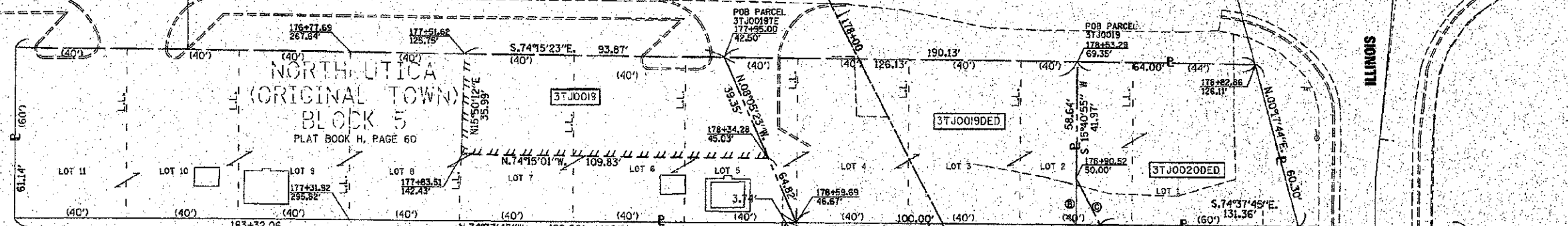
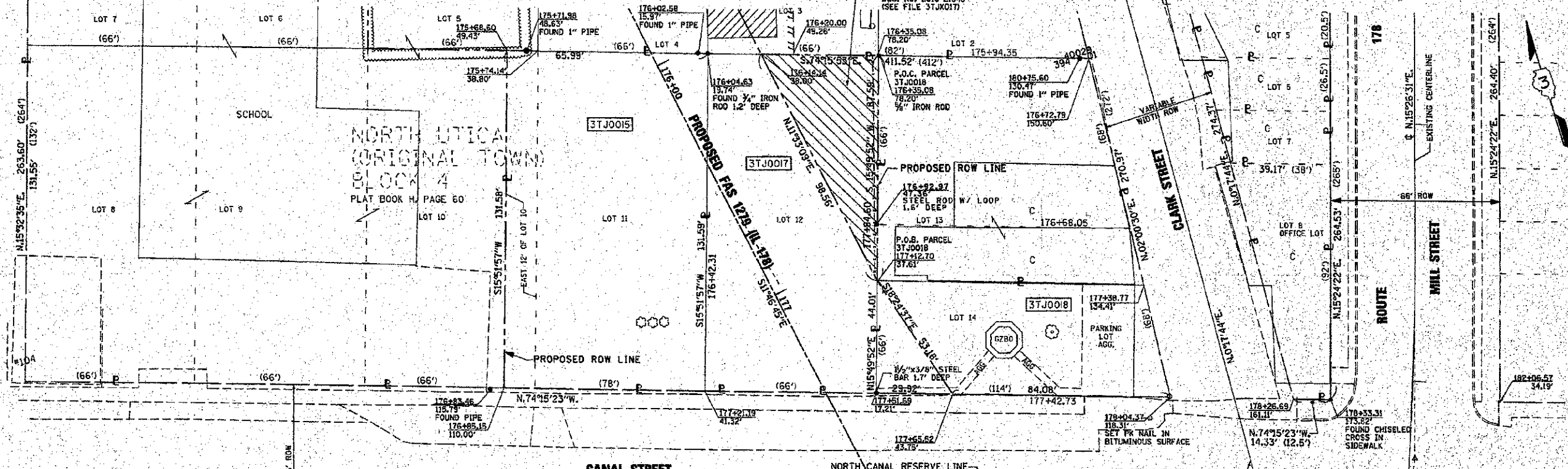
SE 1/4 SEC. 8, T.33N., R.2E., OF THE 3RD P.M.

SW 1/4 SEC. 9 T.33N., R.2E., OF THE 3RD P.M.

EXISTING IL 178
CENTERLINE CURVE DATA
PI STA. = 182+30.42
Δ = 8° 20' 02" (RT)
D = 4° 23' 30"
R = 1,304.62'
T = 72.18'
L = 144.22'
E = 2.00'
PC STA. = 181+58.24
PT STA. = 183+02.46

EXISTING IL 178
CENTERLINE CURVE DATA
PI STA. = 183+14.27
Δ = 6° 07' 50" (LT)
D = 37° 24' 15"
R = 153.18'
T = 6.20'
L = 16.39'
E = 0.22'
PC STA. = 183+06.07
PT STA. = 183+22.46

LINE TABLE
① N74°37'45"W 8.64'
② N15°40'55"E 16.61'
③ S11°46'45"E 18.74'



WD 2006-16420
PARCEL NO. 3TJ0015
MARY ANN PAYNE
TOTAL HOLDING= 10,296 SQ. FT. ±
TOTAL R.O.W. REQUIRED= 10,296 SQ. FT. ±
REMAINDER= 0 SQ. FT. ±

WD 2007-00673
PARCEL NO. 3TJ0017
MARY C. MORRISSEY
TOTAL HOLDING= 8,712 SQ. FT. ±
TOTAL R.O.W. REQUIRED= 8,712 SQ. FT. ±
REMAINDER= 0 SQ. FT. ±

CWD 2006-20873
PARCEL NO. 3TJ0018
THE VILLAGE OF NORTH UTICA
TOTAL HOLDING= 4,757 SQ. FT. ±
TOTAL R.O.W. REQUIRED= 658 SQ. FT. ±
TEMPORARY EASEMENT AREA= 3,666 SQ. FT. ±
PURPOSE= ENTRANCE CONSTRUCTION

DED 2006-20873
PARCEL NO. 3TJ0019DED
THE VILLAGE OF NORTH UTICA
TOTAL HOLDING= 22,800 SQ. FT. ±
TOTAL R.O.W. REQUIRED= 6,671 SQ. FT. ±
TEMPORARY EASEMENT AREA= 3,666 SQ. FT. ±
PURPOSE= ENTRANCE CONSTRUCTION

OVT 2010-20892
PARCEL NO. 3TJ0020DED
DUANE P. DUFFY, ET UX.
TOTAL HOLDING= 4,320 SQ. FT. ±
TOTAL R.O.W. REQUIRED= 72 SQ. FT. ±

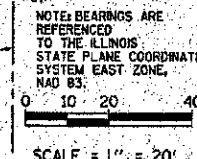
JUR. TRAN. 2010-14064
PARCEL NO. 3TJ0021
DEPARTMENT OF NATURAL RESOURCES
AREA OF JURISDICTIONAL TRANSFER= 0.771 AC. ± (33,585 SQ. FT. ±)

I, RICHARD L. ANDERSON, HEREBY CERTIFY THAT I AM A PROFESSIONAL LAND SURVEYOR OF THE STATE OF ILLINOIS, THAT THE SURVEY OF ILLINOIS FAS 1279 ROUTE 178 WAS MADE UNDER MY DIRECTION, AND THAT THE SURVEY IS TRUE AND COMPLETE AS SHOWN TO THE BEST OF MY KNOWLEDGE AND BELIEF, THAT ALL MONUMENTS AND MARKS ARE OF THE CHARACTER AND OCCUPY THE POSITION SHOWN THEREON, AND ARE SUFFICIENT TO ENABLE THE SURVEY TO BE RE-TRACED. THIS PROFESSIONAL SERVICE CONFORMS TO THE CURRENT ILLINOIS MINIMUM STANDARDS FOR A BOUNDARY SURVEY.

DATED: July 27, 2011
BY: Richard L. Anderson
RICHARD L. ANDERSON
ILLINOIS PROFESSIONAL LAND SURVEYOR NO. 35-3049
LICENSES EXPIRES NOVEMBER 30, 2010



ADDED EXCESS LAND PARCEL 3TJ0017 AND CANAL JURISDICTIONAL TRANSFER AREA
DATED: 4/20/2011
Robert K. Foundstone
ROBERT K. FOUNDSTONE
ILLINOIS PROFESSIONAL LAND SURVEYOR NO. 35-0611



RIGHT OF WAY PLANS
ROUTE FAS 1279 (IL 178)
SECTION 6R, B
PROJECT HD-1279(103)
COUNTY LASALLE
JOB NO. R-93-001-05
STA 172+00 TO STA 175+00
SCALE 1" = 20'

PLAT DATE = 4/20/2011
FILE NO. = 2011-10225
DRAWN BY = R. Anderson
CHECKED BY = R. Foundstone

CENTERLINE CURVE DATA
PROPOSED IL RTE 178
PI STA. = 184+48.25
Δ = 13° 24' 30" (RT)
D = 4° 46' 29"
R = 1200.00'
T = 141.05'
L = 280.82'
E = 8.26'
PC STA. = 183+07.20
PT STA. = 185+88.02

LINE TABLE
① S 15° 44' 46" W 18.20'
② N 11° 46' 45" W 18.25'
③ S 74° 23' 38" E 8.48'
④ N 76° 28' 07" E 17.74'

WD 2010-14698
PARCEL NO. 3TJ0022

NORTHERN PARTNERS COOPERATIVE

TOTAL HOLDING= 53,927 SQ. FT. ±
TOTAL R.O.W REQUIRED = 13,974 SQ. FT. ±
REMAINDER= 39,953 SQ. FT. ±

WD 2010-20890
PARCEL NO. 3TJ0023

GEORGE H. KLIBER, JR., ET UX.

TOTAL HOLDING= 15,812 SQ. FT. ±
TOTAL R.O.W REQUIRED= 15,812 SQ. FT. ±
REMAINDER= 0 SQ. FT. ±

WD 2010-08595
PARCEL NO. 3TJ0024

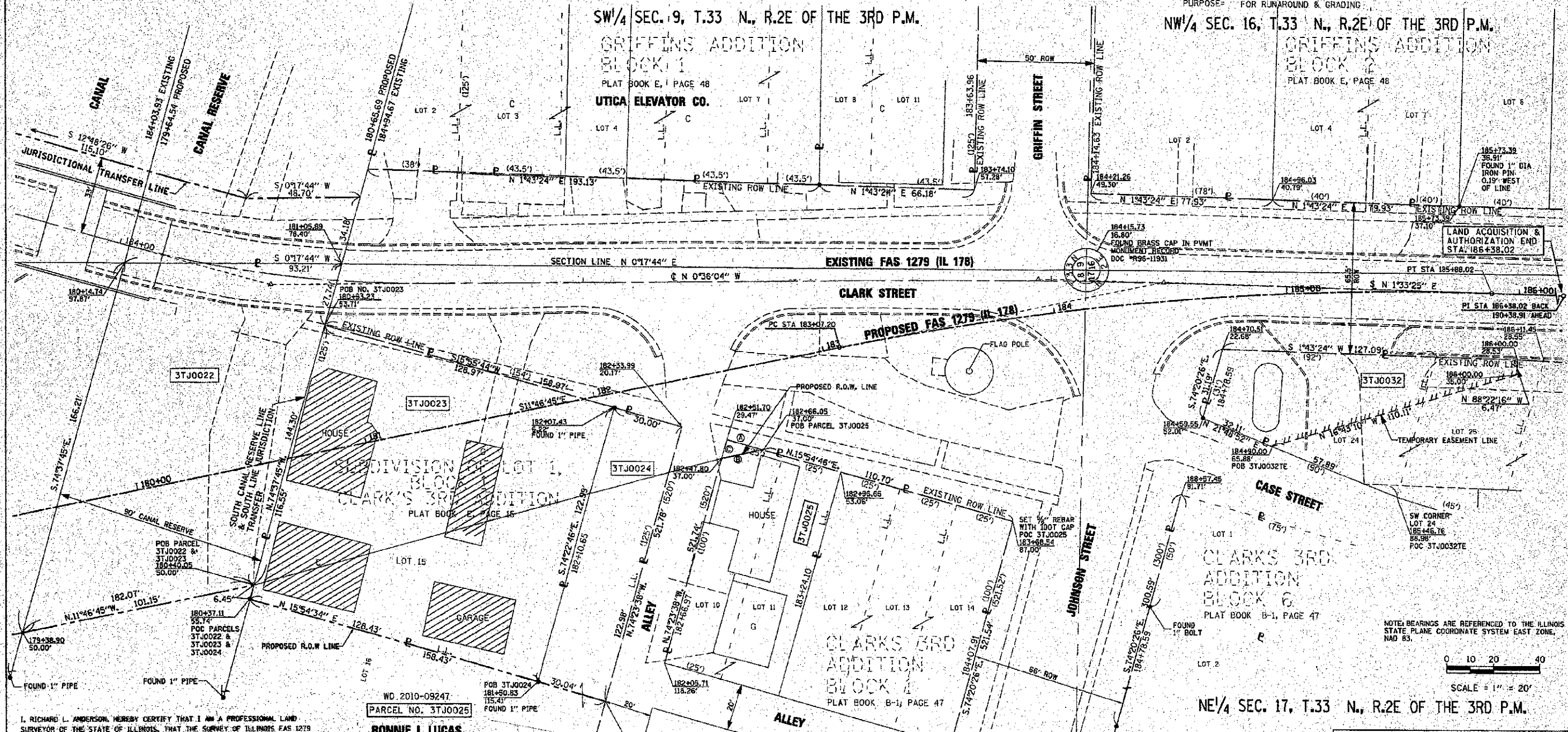
NORTHERN PARTNERS COOPERATIVE

TOTAL HOLDING= 64,904 SQ. FT. ±
TOTAL R.O.W REQUIRED= 3,692 SQ. FT. ±
REMAINDER= 61,212 SQ. FT. ±

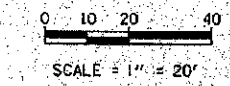
PARCEL NO. 3TJ0032

**FIRST NATIONAL BANK
OF OTTAWA, TRUSTEE
TRUST NO. 2061**

TOTAL HOLDING= 26,635 SQ. FT. ±
TEMPORARY EASEMENT= 3,460 SQ. FT. ±
PURPOSE= FOR RUMAROUND & GRADING



NOTE: BEARINGS ARE REFERENCED TO THE ILLINOIS STATE PLANE COORDINATE SYSTEM EAST ZONE, NAD 83.



I, RICHARD L. ANDERSON HEREBY CERTIFY THAT I AM A PROFESSIONAL LAND SURVEYOR OF THE STATE OF ILLINOIS, THAT THE SURVEY OF ILLINOIS FAS 1279 ROUTE 178 WAS MADE UNDER MY DIRECTION, AND THAT THE SURVEY IS TRUE AND COMPLETE AS SHOWN TO THE BEST OF MY KNOWLEDGE AND BELIEF, THAT ALL MONUMENTS AND MARKS ARE OF THE CHARACTER AND OCCUPY THE POSITION SHOWN THEREON, AND ARE SUFFICIENT TO ENABLE THE SURVEY TO BE RETRACED. THIS PROFESSIONAL SERVICE CONFORMS TO THE CURRENT ILLINOIS MINIMUM STANDARDS FOR A BOUNDARY SURVEY.

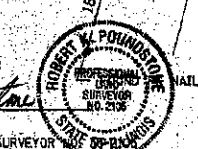
DATED: 4/20/2011
BY: *Richard L. Anderson*
RICHARD L. ANDERSON
ILLINOIS PROFESSIONAL LAND SURVEYOR NO. 35-3049
LICENSES EXPIRES NOVEMBER 30, 2010

WD 2010-09247
PARCEL NO. 3TJ0025

BONNIE L. LUCAS

TOTAL HOLDING= 5000 SQ. FT. ±
TOTAL R.O.W REQUIRED= 69 SQ. FT. ±
REMAINDER= 4931 SQ. FT. ±

ADDED THE BOUNDARY FOR CANAL JURISDICTIONAL TRANSFER
DATED: 4/20/2011
Robert K. Poundstone
ROBERT K. POUNDSTONE
ILLINOIS PROFESSIONAL LAND SURVEYOR NO. 2136



SE 1/4 SEC. 8, T.33 N., R.2E OF THE 3RD P.M.

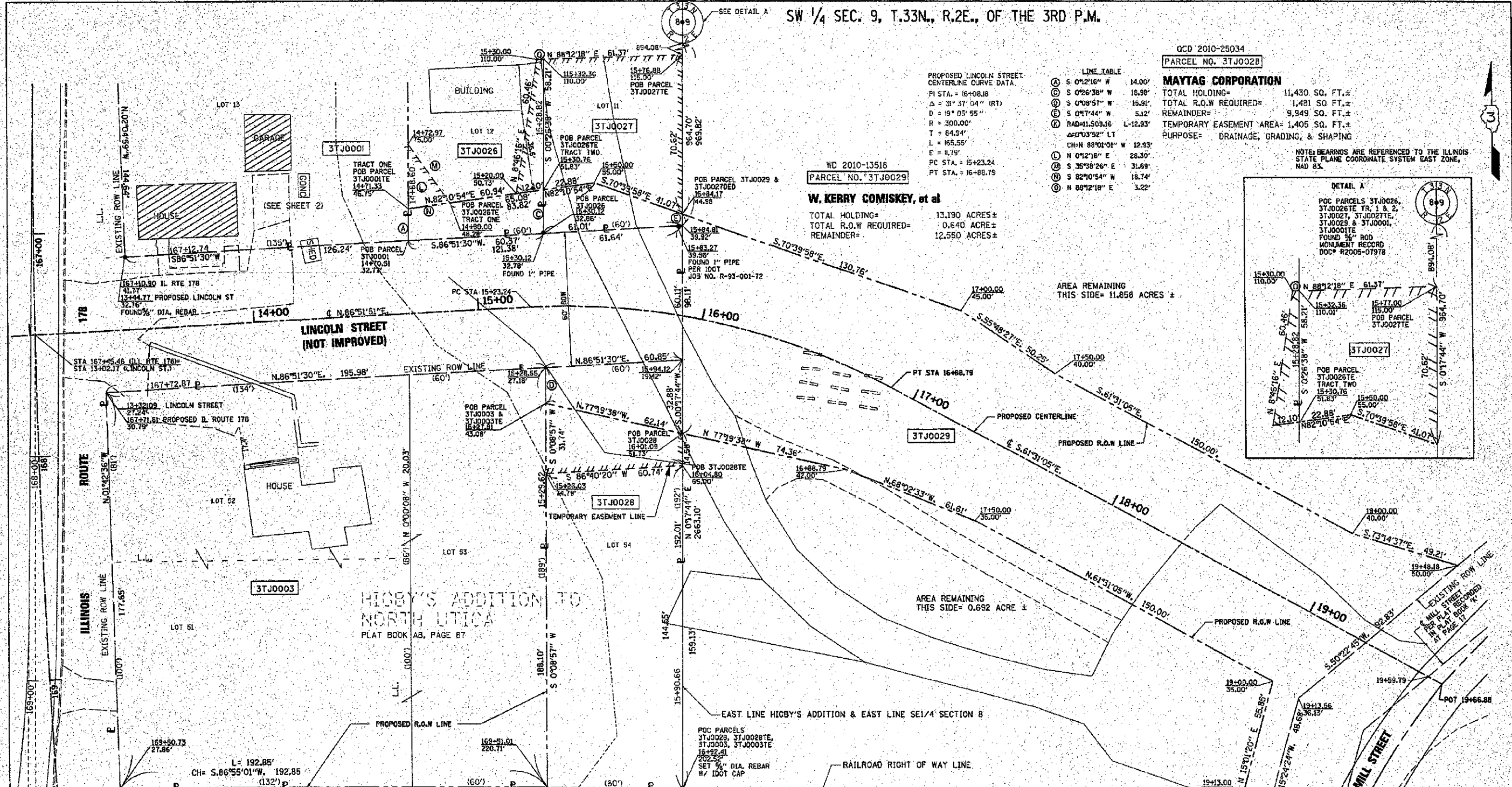
EXISTING IL RTE 178
CENTERLINE CURVE DATA
PI STA. = 184+66.81
Δ = 16° 14' 52" (LT)
D = 12° 21' 49"
R = 459.70'
T = 65.82'
L = 130.36'
E = 4.66'
PC STA. = 184+01.19
PT STA. = 185+31.55

EXISTING IL RTE 178
CENTERLINE CURVE DATA
PI STA. = 187+94.48
Δ = 2° 09' 29" (RT)
D = 1° 22' 14"
R = 4,180.64'
T = 78.74'
L = 197.46'
E = 0.74'
PC STA. = 187+15.74
PT STA. = 188+73.20

RIGHT OF WAY PLANS
ROUTE FAS 1279 (IL 178)
SECTION 6R, B
PROJECT HD-1279(103)
COUNTY LASALLE
JOB NO. R-93-001-05
STA 179+50. TO STA 186+00
SCALE 1" = 20'
SHEET 28 OF 29
CONTRACT # 87355

DATE: 5/3/2011
FILE NAME: C:\Users\land\Documents\87355\87355.dwg
PLOT SCALE: 1" = 20'
USER: rluc

SW 1/4 SEC. 9, T.33N., R.2E., OF THE 3RD P.M.

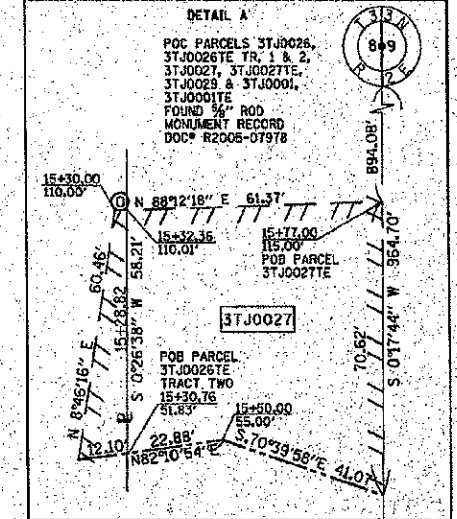


PROPOSED LINCOLN STREET CENTERLINE CURVE DATA:
 PI STA. = 16+08.18
 $\Delta = 31^{\circ} 37' 04''$ (RT)
 $D = 19^{\circ} 05' 55''$
 $R = 300.00'$
 $T = 64.54'$
 $L = 165.55'$
 $E = 11.74'$
 PC STA. = 15+23.24
 PT STA. = 16+86.79

WD 2010-13518
W. KERRY COMISKEY, et al
 TOTAL HOLDING = 13.190 ACRES ±
 TOTAL R.O.W. REQUIRED = 0.640 ACRE ±
 REMAINDER = 12.550 ACRES ±

QCD 2010-25034
MAYTAG CORPORATION
 TOTAL HOLDING = 11,430 SQ. FT. ±
 TOTAL R.O.W. REQUIRED = 1,481 SQ. FT. ±
 REMAINDER = 9,949 SQ. FT. ±
 TEMPORARY EASEMENT AREA = 1,405 SQ. FT. ±
 PURPOSE = DRAINAGE, GRADING, & SHAPING

NOTE: BEARINGS ARE REFERENCED TO THE ILLINOIS STATE PLANE COORDINATE SYSTEM EAST ZONE, NAD 83.



AREA REMAINING THIS SIDE = 11.858 ACRES ±

AREA REMAINING THIS SIDE = 0.692 ACRE ±

I, RICHARD L. ANDERSON, HEREBY CERTIFY THAT I AM A PROFESSIONAL LAND SURVEYOR OF THE STATE OF ILLINOIS, THAT THE SURVEY OF ILLINOIS FAS 1279 ROUTE 178 WAS MADE UNDER MY DIRECTION, AND THAT THE SURVEY IS TRUE AND COMPLETE AS SHOWN TO THE BEST OF MY KNOWLEDGE AND BELIEF, THAT ALL MONUMENTS AND MARKS ARE OF THE CHARACTER AND OCCUPY THE POSITION SHOWN THEREON, AND ARE SUFFICIENT TO ENABLE THE SURVEY TO BE RETRACED. THIS PROFESSIONAL SERVICE CONFORMS TO THE CURRENT ILLINOIS MINIMUM STANDARDS FOR A BOUNDARY SURVEY.

DATED: *July 27, 2009*
 BY: *Richard L. Anderson*
 RICHARD L. ANDERSON
 ILLINOIS PROFESSIONAL LAND SURVEYOR NO. 35-3049
 LICENSE EXPIRES NOVEMBER 30, 2010



CHICAGO PACIFIC CORPORATION
 WD 2010-04061
GREGORY A. CRABBE, ET UX.
 TOTAL HOLDING = 35,490 SQ. FT. ±
 TOTAL R.O.W. REQUIRED = 35,490 SQ. FT. ±
 REMAINDER = 0 SQ. FT. ±

REVISED PARCELS 3TJ0001 & 3TJ0003 TO TOTAL TAKE
 DATED: *4/28/2011*
Robert K. Poundstone
 ROBERT K. POUNDSTONE
 ILLINOIS PROFESSIONAL LAND SURVEYOR NO. 35-3049



DED 2010-11471
THE TOWNSHIP OF UTICA
 TOTAL HOLDING = 5,625 SQ. FT. ±
 TOTAL R.O.W. REQUIRED = 994 SQ. FT. ±
 TEMPORARY EASEMENT AREA =
 TRACT 1 = 263 SQ. FT. ±
 TRACT 2 = 444 SQ. FT. ±
 PURPOSE = DRAINAGE, GRADING, & SHAPING

QCD 2010-24585
ILLINOIS POWER CO.
 TOTAL HOLDING = 11,190 SQ. FT. ±
 TOTAL R.O.W. REQUIRED = 956 SQ. FT. ±
 TEMPORARY EASEMENT AREA = 3,741 SQ. FT. ±
 PURPOSE = ENTRANCE RECONSTRUCTION, GRADING, & SHAPING

RIGHT OF WAY PLANS
 ROUTE FAS 1279 (IL 178)
 SECTION 6R, B
 PROJECT HD-1279(103)
 COUNTY LASALLE
 JOB NO. R-93-001-05
 STA 13+50 TO STA 20+00
 SCALE 1" = 20'