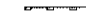
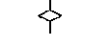
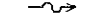


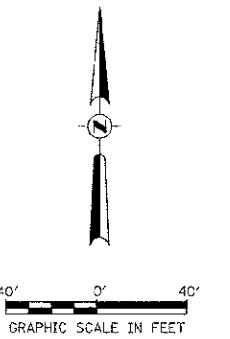
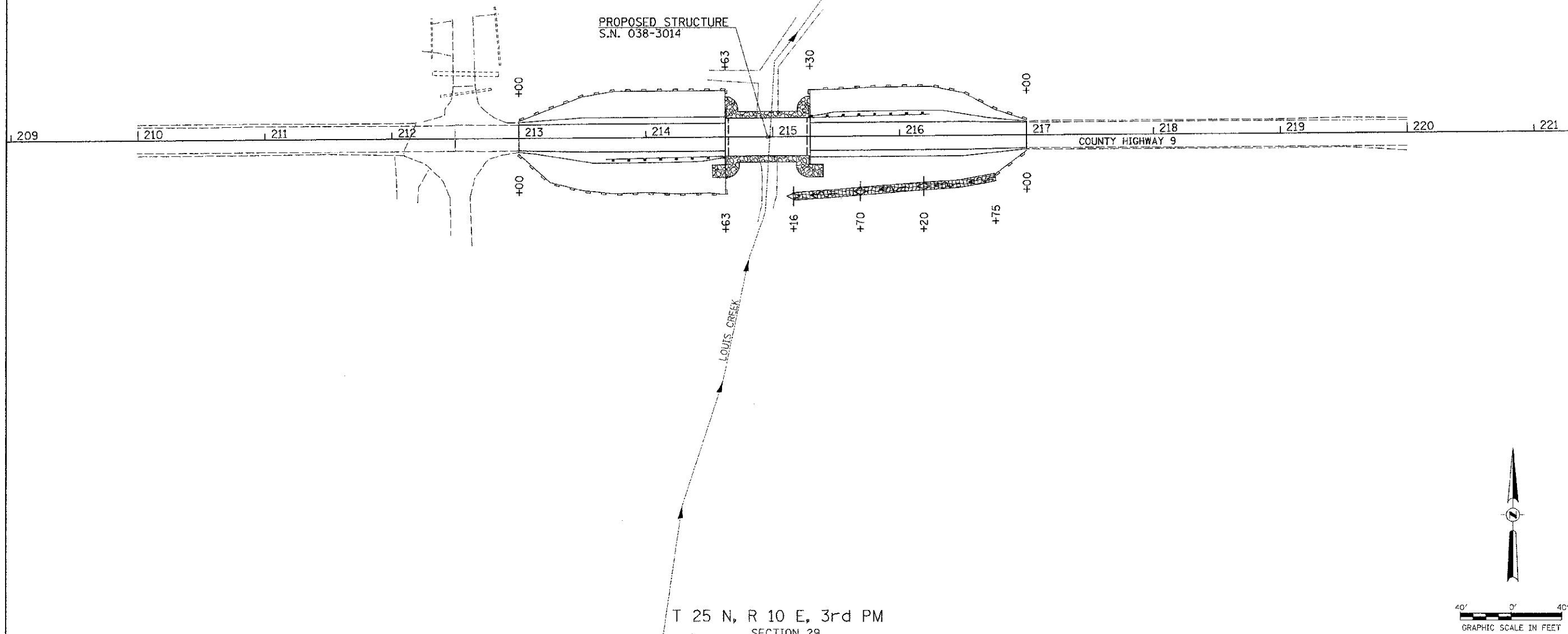


T 25 N, R 10 E, 3rd PM
SECTION 20

LEGEND

-  PERIMETER EROSION BARRIER
-  TEMPORARY DITCH CHECK
-  SPECIAL DITCH - FLOW LINE AND DIRECTION
-  PROPOSED RIPRAP PLACEMENT
-  EROSION CONTROL BLANKET



| | | | | | | | | | | |
|--|---------------------|------------|-----------|--|-----------------------------|----------------------------------|---------------------------|----------------------------------|--------------------|--------------------|
| FILE NAME = V:\Bridge\2969-Iroquois\2969001.dgn | USER NAME = cshomes | DESIGNED - | REVISED - | IROQUOIS COUNTY COUNTY HIGHWAY 9 OVER LOUIS CREEK TRIBUTARY | EROSION CONTROL PLAN | F.A.S. RTE. 334 | SECTION 08-00130-02-BR | COUNTY IROQUOIS | TOTAL SHEETS 27 | SHEET NO. 5 |
| PLOT SCALE = 40,0000 1" = 40' | | CHECKED - | REVISED - | SCALE: 1"=40' | | SHEET NO. 1 OF 1 SHEETS | | STA. 213+00.00 TO STA. 217+00.00 | | CONTRACT NO. 87524 |
| PLOT DATE = 6/1/2012 | | DATE - | REVISFD - | | | FED. ROAD DIST. NO. 7 [ILLINOIS] | | FED. AID PROJECT BR5-0334(113) | | |